

# Health & Care Information Model:

nl.zorg.SNAQrcScore-v1.2

Status: Final

Release: 2023

Release status: Prepublished

Managed by:



# Content

<b>1. nlzorg.SNAQrcScore-v1.2</b>	<b>3</b>
1.1 Revision History	3
1.2 Concept	3
1.3 Mindmap	3
1.4 Purpose	3
1.5 Patient Population	4
1.6 Evidence Base	4
1.7 Information Model	4
1.8 Example Instances	8
1.9 Instructions	8
1.10 Interpretation	8
1.11 Care Process	8
1.12 Example of the Instrument	8
1.13 Constraints	8
1.14 Issues	8
1.15 References	8
1.16 Functional Model	8
1.17 Traceability to other Standards	8
1.18 Disclaimer	8
1.19 Terms of Use	9
1.20 Copyrights	9

## 1. nl.zorg.SNAQrcScore-v1.2

DCM::CoderList	Werkgroep RadB Verpleegkundige Gegevens
DCM::ContactInformation.Address	*
DCM::ContactInformation.Name	*
DCM::ContactInformation.Telecom	*
DCM::ContentAuthorList	Werkgroep RadB Verpleegkundige Gegevens
DCM::CreationDate	28-7-2016
DCM::DeprecatedDate	
DCM::DescriptionLanguage	nl
DCM::EndorsingAuthority.Address	
DCM::EndorsingAuthority.Name	zorg
DCM::EndorsingAuthority.Telecom	
DCM::Id	2.16.840.1.113883.2.4.3.11.60.40.3.4.29
DCM::KeywordList	Ondervoeding, ondervoedingsscore, SNAQ, SNAQrc, malnutrition
DCM::LifecycleStatus	Final
DCM::ModelerList	Werkgroep RadB Verpleegkundige Gegevens
DCM::Name	nl.zorg.SNAQrcScore
DCM::PublicationDate	15-10-2023
DCM::PublicationStatus	Prepublished
DCM::ReviewerList	Projectgroep RadB Verpleegkundige Gegevens & Kerngroep Registratie aan de Bron
DCM::RevisionDate	27-05-2022
DCM::Supersedes	nl.zorg.SNAQrcScore-v1.1
DCM::Version	1.2
HCIM::PublicationLanguage	EN

### 1.1 Revision History

Publicatieversie 1.0 (04-09-2017)

Publicatieversie 1.1 (31-01-2020)

Bevat: ZIB-930.

Publicatieversie 1.2 (10-06-2022)

Bevat: ZIB-1633, ZIB-1635.

### 1.2 Concept

The Short Nutritional Assessment Questionnaire for Residential Care (SNAQrc is a (validated) measuring tool for determining the extent of a patient's malnutrition. The tool comprises four questions, each of which is assigned a score. The total score determines the extent of malnutrition.

The SNAQrc helps to recognize and treat malnutrition at an early stage.

Four varieties of the measuring tool were developed for different care settings: hospitals (adults & children), nursing and retirement homes and independently living seniors. This concept describes the tool intended for the nursing and retirement homes setting.

### 1.3 Mindmap

### 1.4 Purpose

The SNAQrcscore is used to determine the extent of malnutrition or the risk of malnutrition. To treat malnutrition quickly and effectively, it is important to identify the malnutrition at an early stage.

## 1.5 Patient Population

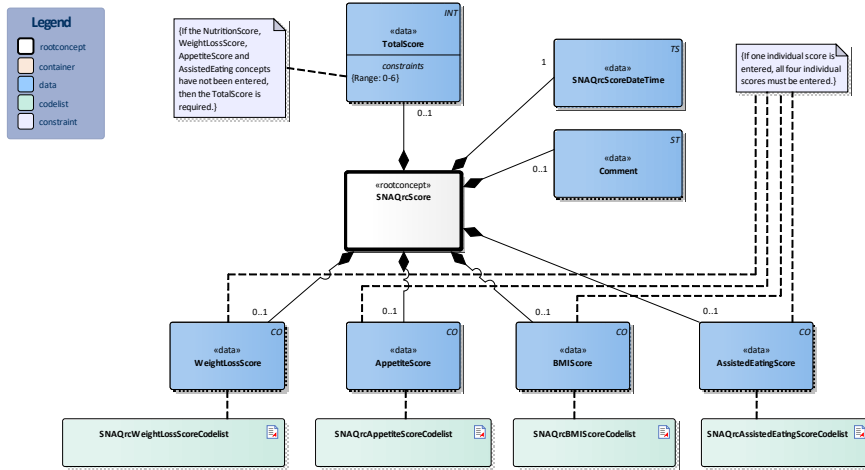
The SNAQrc is meant for patients over 18 years of age who are staying in nursing and retirement homes.

## 1.6 Evidence Base

To determine the extent of malnutrition, SNAQ has a number of tools, validated for different settings:

- The SNAQ was developed for adults admitted to hospital.
- The SNAQ65+ was developed for the group of seniors (age over 65) who live at home and who may make use of care at home.
- The SNAQrc (Short Nutritional Assessment Questionnaire for Residential Care) is available for screening for malnutrition in nursing and retirement homes.
- The STRONGkids tool is available for screening for malnutrition among children.

## 1.7 Information Model



«rootconcept»	SNAQrcScore	
<b>Definitie</b>	Root concept of the SNAQrcScore information model. This root concept contains all data elements of the SNAQrcScore information model.	
<b>Datatype</b>		
<b>DCM::ConceptId</b>	NL-CM:4.29.1	
<b>DCM::DefinitionCode</b>	SNOMED CT: 108311000146106 Short Nutritional Questionnaire for residential care	
<b>Opties</b>		

«data»	WeightLossScore	
<b>Definitie</b>	The score based on undesired weight loss over the past month(s).	
<b>Datatype</b>	CO	
<b>DCM::ConceptId</b>	NL-CM:4.29.3	

<b>DCM::DefinitionCode</b>	ScoreObservaties: 4029003 SNAQrcScore WeightLossScore	OID: 2.16.840.1.113883.2.4.3.11.60.40.4.0.1
<b>DCM::ValueSet</b>	SNAQrcWeightLossScoreCod elist	OID: 2.16.840.1.113883.2.4.3.11.60.40.2.4.29.1
<b>Opties</b>		

<b>«data»</b>	<b>AppetiteScore</b>	
<b>Definitie</b>	The score based on a reduced appetite over the past month.	
<b>Datatype</b>	CO	
<b>DCM::ConceptId</b>	NL-CM:4.29.4	
<b>DCM::DefinitionCode</b>	ScoreObservaties: 4029004 SNAQrcScore AppetiteScore	OID: 2.16.840.1.113883.2.4.3.11.60.40.4.0.1
<b>DCM::ValueSet</b>	SNAQrcAppetiteScoreCodelis t	OID: 2.16.840.1.113883.2.4.3.11.60.40.2.4.29.2
<b>Opties</b>		

<b>«data»</b>	<b>BMIScore</b>	
<b>Definitie</b>	The score based on the BMI of the patient. For a BMI >28 (overweight) the score is not applicable.	
<b>Datatype</b>	CO	
<b>DCM::ConceptId</b>	NL-CM:4.29.5	
<b>DCM::DefinitionCode</b>	ScoreObservaties: 4029005 SNAQrcScore BMIScore	OID: 2.16.840.1.113883.2.4.3.11.60.40.4.0.1
<b>DCM::ValueSet</b>	SNAQrcBMIScoreCodelist	OID: 2.16.840.1.113883.2.4.3.11.60.40.2.4.29.3
<b>Opties</b>		

<b>«data»</b>	<b>AssistedEatingScore</b>	
<b>Definitie</b>	The score based on the ability of the patient to eat and drink without assistance.	
<b>Datatype</b>	CO	
<b>DCM::ConceptId</b>	NL-CM:4.29.8	
<b>DCM::DefinitionCode</b>	ScoreObservaties: 4029008 SNAQrcScore AssistedEatingScore	OID: 2.16.840.1.113883.2.4.3.11.60.40.4.0.1
<b>DCM::ValueSet</b>	SNAQrcAssistedEatingScoreC odelist	OID: 2.16.840.1.113883.2.4.3.11.60.40.2.4.29.4
<b>Opties</b>		

<b>«data»</b>	<b>TotalScore</b>	
<b>Definitie</b>	The total score is the sum of all the individual scores. The total score has a range from 0 - 6. The relation between the value of the total score and the color outcome of the score tool is: 0 = green 1 = orange 2 and higher = red.	
<b>Datatype</b>	INT	
<b>DCM::ConceptId</b>	NL-CM:4.29.2	
<b>DCM::DefinitionCode</b>	SNOMED CT: 108901000146105 Short Nutritional Questionnaire for residential care total score	
<b>Opties</b>		
<b>Constraint</b>	Range: 0-6	

«data»		SNAQrcScoreDateTime	
Definitie	The date and time at which the SNAQrc score was determined.		
Datatype	TS		
DCM::ConceptId	NL-CM:4.29.6		
Opties			

«data»		Comment	
Definitie	A comment on the circumstances during the measurement.		
Datatype	ST		
DCM::ConceptId	NL-CM:4.29.7		
DCM::DefinitionCode	LOINC: 48767-8 Annotation comment		
Opties			

«document»		SNAQrcWeightLossScoreCodelist	
Definitie			
Datatype			
DCM::ValueSetBinding	Required		
DCM::ValueSetId	2.16.840.1.113883.2.4.3.11.60.40.2.4.29.1		
HCIM::ValueSetLanguage	EN		
Opties			

SNAQrcGewichtsverliesScoreCodelist		OID: 2.16.840.1.113883.2.4.3.11.60.40.2.4.29.1			
Concept Name	Concept Value	Concept Code	CodeSys. Name	CodeSystem OID	Description
LossLow	0	G0	SNAQrc_Gewichtsverlies	2.16.840.1.113883.2.4.3.11.60.40.4.19.1	Geen gewichtsverlies
LossAverage	2	G1	SNAQrc_Gewichtsverlies	2.16.840.1.113883.2.4.3.11.60.40.4.19.1	Meer dan 6 kg in de laatste 6 maanden
LossHigh	2	G2	SNAQrc_Gewichtsverlies	2.16.840.1.113883.2.4.3.11.60.40.4.19.1	Meer dan 3 kg in de laatste maand

«document»		SNAQrcAppetiteScoreCodelist	
Definitie			
Datatype			
DCM::ValueSetBinding	Required		
DCM::ValueSetId	2.16.840.1.113883.2.4.3.11.60.40.2.4.29.2		
HCIM::ValueSetLanguage	NL		
Opties			

SNAQrcEetlustScoreCodelist		OID: 2.16.840.1.113883.2.4.3.11.60.40.2.4.29.2			
Concept Name	Concept Value	Concept Code	CodeSys. Name	CodeSystem OID	Description
Eetlust	0	B0	SNAQrc_Eetlust	2.16.840.1.113883.2.4.3.11.60.40.4.19.2	Normale eetlust
GeenEetlust	1	B1	SNAQrc_Eetlust	2.16.840.1.113883.2.4.3.11.60.40.4.19.2	Verminderde eetlust de afgelopen maand

«document»		SNAQrcBMIScoreCodelist	
------------	--	------------------------	--

<b>Definitie</b>	
<b>Datatype</b>	
<b>DCM::ValueSetBinding</b>	Required
<b>DCM::ValueSetId</b>	2.16.840.1.113883.2.4.3.11.60.40.2.4.29.3
<b>HCIM::ValueSetLanguage</b>	NL
<b>Opties</b>	

SNAQrcBMIScoreCodelijst			OID: 2.16.840.1.113883.2.4.3.11.60.40.2.4.29.3		
Concept Name	Concept Value	Concept Code	CodeSys. Name	CodeSystem OID	Description
Ondergewicht	2	B2	SNAQrc_BMI	2.16.840.1.113883.2.4.3.11.60.40.4.19.3	Ondergewicht (BMI<20)
Telicht	1	B1	SNAQrc_BMI	2.16.840.1.113883.2.4.3.11.60.40.4.19.3	Te Licht (20 <=BMI <22)
Gezond	0	B0	SNAQrc_BMI	2.16.840.1.113883.2.4.3.11.60.40.4.19.3	Gezond (22 <=BMI <28)

<b>«document»</b>	SNAQrcAssistedEatingScoreCodelist				
<b>Definitie</b>					
<b>Datatype</b>					
<b>DCM::ValueSetBinding</b>	Required				
<b>DCM::ValueSetId</b>	2.16.840.1.113883.2.4.3.11.60.40.2.4.29.4				
<b>HCIM::ValueSetLanguage</b>	NL				
<b>Opties</b>					

SNAQrcHulpBijEtenScoreCodelijst			OID: 2.16.840.1.113883.2.4.3.11.60.40.2.4.29.4		
Concept Name	Concept Value	Concept Code	CodeSys. Name	CodeSystem OID	Description
Independent feeding	0	165224005	SNOMED CT	2.16.840.1.113883.6.96	Onafhankelijk
Feeding assisted	1	129033007	SNOMED CT	2.16.840.1.113883.6.96	Hulp nodig

<b>Legend</b>	
<b>Definitie</b>	
<b>Datatype</b>	
<b>Opties</b>	

<b>Constraint</b>	
<b>Definitie</b>	If one individual score is entered, all four individual scores must be entered.
<b>Datatype</b>	
<b>Opties</b>	

<b>Constraint</b>	
<b>Definitie</b>	If the NutritionScore, WeightLossScore, AppetiteScore and AssistedEating concepts have not been entered, then the TotalScore is required.

Datatype	
Opties	

## 1.8 Example Instances

SNAQ <sup>RC</sup> score (verpleeghuis)		
Datum	27-01-2013	
Opmerking		
Item	Score	Beschrijving
Gewichtsverlies	2	Meer dan 6 kg in de laatste 6 maanden
BMI	1	BMI tussen 20-22 kg/m <sup>2</sup>
Eetlust	1	Verminderde eetlust
Hulp bij eten	0	Geen hulp bij eten
Totaalscore	Score	Scorekleur
SNAQ <sup>RC</sup> Score	4	Rood

## 1.9 Instructions

### 1.10 Interpretation

### 1.11 Care Process

### 1.12 Example of the Instrument

### 1.13 Constraints

### 1.14 Issues

### 1.15 References

1. Stuurgroep Ondervoeding [Online] Beschikbaar op: <http://www.stuurgroepondervoeding.nl/>  
[Geraadpleegd: 16 december 2016]

### 1.16 Functional Model

### 1.17 Traceability to other Standards

### 1.18 Disclaimer



This Health and Care Information Model (a.k.a Clinical Building Block) has been made in collaboration with several different parties in healthcare. These parties asked Nictiz to manage good maintenance and development of the information models. Hereafter, these parties and Nictiz are referred to as the collaborating parties. The collaborating parties paid utmost attention to the reliability and topicality of the data in these Health and Care Information Models. Omissions and inaccuracies may however occur. The collaborating parties are not liable for any damages resulting from omissions or inaccuracies in the information provided, nor are they liable for damages resulting from problems caused by or inherent to distributing information on the internet, such as malfunctions, interruptions, errors or delays in information or services provide by the parties to you or by you to the parties via a website or via e-mail, or any other digital means. The collaborating parties will also not accept liability for any damages resulting from the use of data, advice or ideas provided by or on behalf of the parties by means of this Health and Care Information Model. The parties will not accept any liability for the content of information in this Health and Care Information Model to which or from which a hyperlink is referred. In the event of contradictions in mentioned Health and Care Information Model documents and files, the most recent and highest version of the listed order in the revisions will indicate the priority of the documents in question. If information included in the digital version of this Health and Care Information Model is also distributed in writing, the written version will be leading in case of textual differences. This will apply if both have the same version number and date. A definitive version has priority over a draft version. A revised version has priority over previous versions.

### **1.19 Terms of Use**

The user may use the information in this Health and Care Information Model without limitations. The copyright provisions in the paragraph concerned apply to copying, distributing and passing on information from this Health and Care Information Model.

### **1.20 Copyrights**

The user may copy, distribute and pass on the information in this Health and Care Information Model under the conditions that apply for Creative Commons license Attribution-NonCommercial-ShareAlike 3.0 Netherlands (CC BY-NC-SA-3.0). The content is available under Creative Commons Attribution-NonCommercial-ShareAlike 3.0 (see also <http://creativecommons.org/licenses/by-nc-sa/3.0/nl/>)

Nictiz is the independent national competence centre for electronic exchange of health and care information. The activities of Nictiz include the targeted development and management of information standards at the request of and in partnership with the stakeholders in healthcare. Nictiz advises these parties on all aspects of information exchange and identifies (future) national and international developments.

**Nictiz**  
P.O. Box 19121  
2500 CC Den Haag  
Oude Middenweg 55  
2491 AC Den Haag

070-3173450  
[info@nictiz.nl](mailto:info@nictiz.nl)  
[www.nictiz.nl](http://www.nictiz.nl)



