

Health & Care Information Model: nl.nfu.Malnutrition-v1.0

Status:Final

Release:2015

Release status: Published

Managed by:

Better health
through better IT

Nictiz 

Content

1. nl.nfu.Malnutrition-v1.0	3
1.1 Revision History	3
1.2 Concept	3
1.3 Mindmap	3
1.4 Purpose	3
1.5 Patient Population	4
1.6 Evidence Base	4
1.7 Information Model	4
1.8 Example Instances	6
1.9 Instructions	6
1.10 Interpretation	6
1.11 Care Process	6
1.12 Example of the Instrument	6
1.13 Constraints	6
1.14 Issues	6
1.15 References	6
1.16 Functional Model	6
1.17 Traceability to other Standards	6
1.18 Disclaimer	7
1.19 Terms of Use	7
1.20 Copyrights	7

1. nl.nfu.Malnutrition-v1.0

DCM::CoderList	Werkgroep RadB Verpleegkundige Gegevens
DCM::ContactInformation.Address	*
DCM::ContactInformation.Name	*
DCM::ContactInformation.Telecom	*
DCM::ContentAuthorList	Werkgroep RadB Verpleegkundige Gegevens
DCM::CreationDate	12-2-2014
DCM::DeprecatedDate	
DCM::DescriptionLanguage	nl
DCM::EndorsingAuthority.Address	
DCM::EndorsingAuthority.Name	NFU & V&VN
DCM::EndorsingAuthority.Telecom	
DCM::Id	2.16.840.1.113883.2.4.3.11.60.40.3.4.4
DCM::KeywordList	Ondervoeding, MUST score, SNAQ score
DCM::LifecycleStatus	Final
DCM::ModelerList	Werkgroep RadB Verpleegkundige Gegevens
DCM::Name	nl.nfu.Ondervoeding
DCM::PublicationDate	8-9-2015
DCM::PublicationStatus	Published
DCM::ReviewerList	Projectgroep RadB Verpleegkundige Gegevens & Kerngroep Registratie aan de Bron
DCM::RevisionDate	8-9-2015
DCM::Superseeds	
DCM::Version	1.0
HCIM::PublicationLanguage	EN

1.1 Revision History

Publicatieversie 1.0 (01-07-2015)

1.2 Concept

Malnutrition is a nutritional condition in which the patient has an imbalance of energy, protein and other nutrients leading to measurable negative effects on the body's composition and functioning. This is largely caused by a clinically relevant reduction in muscle mass.

Ill and vulnerable elderly people are particularly prone to malnutrition.

Aids in determining (the risk of) malnutrition are validated screening tools such as the MUST and SNAQ questionnaire.

(Source: NHG, National Primary Care Collaboration Agreement on Malnutrition)

1.3 Mindmap

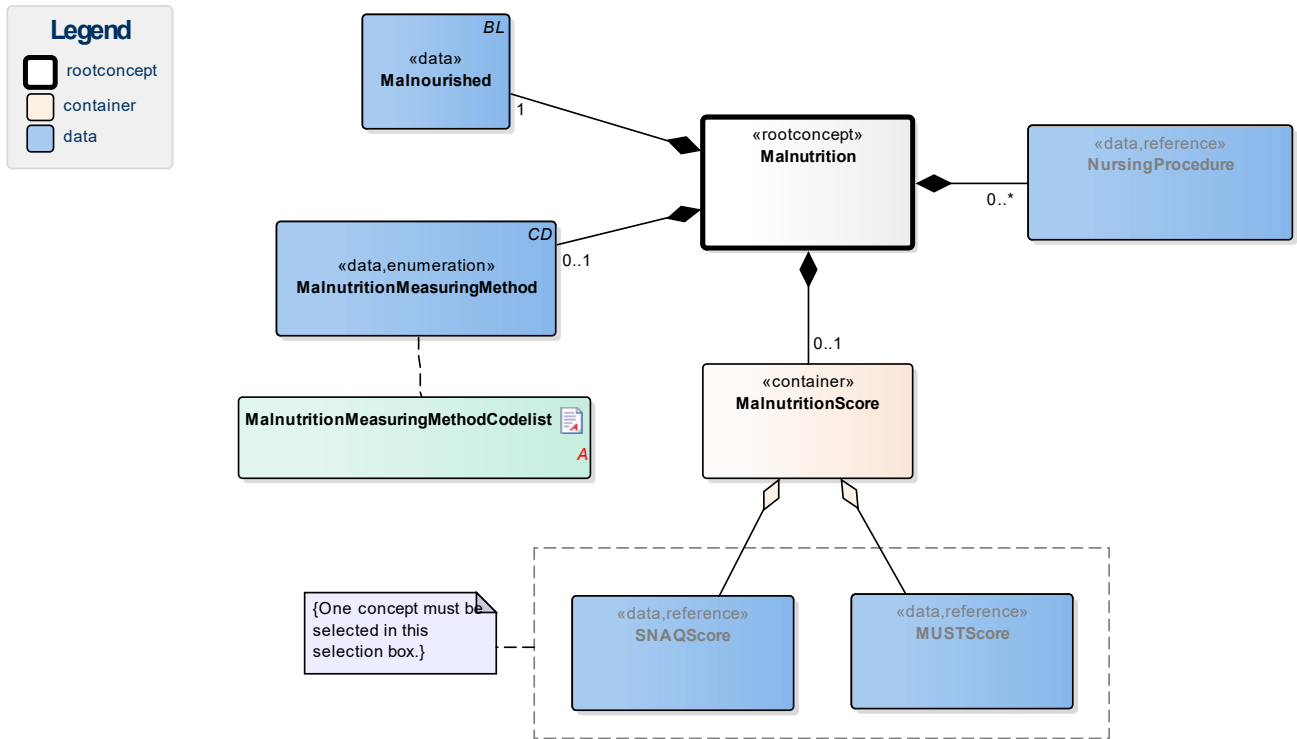
1.4 Purpose

Malnutrition can lead to a significantly slower recovery, complications in the event of illness and operations and above all, higher mortality. Insight into the extent of (or risk of) malnutrition can help prevent malnutrition or prevent the nutritional condition from getting worse.

1.5 Patient Population

1.6 Evidence Base

1.7 Information Model



«rootconcept»	Malnutrition	
Definitie	Root concept of the Malnutrition building block. This root concept contains all data elements of the Malnutrition building block.	
Datatype		
DCM::ConceptId	NL-CM:4.4.1	
DCM::DefinitionCode	SNOMED CT: 2492009	Malnutrition
Opties		

«data»	Malnourished	
Definitie	An indication stating whether the patient is malnourished.	
Datatype	BL	
DCM::ConceptId	NL-CM:4.4.2	
Opties		

«data»	MalnutritionMeasuringMethod	
Definitie	Description of which measuring method is used to determine the malnutrition score.	
Datatype	CD	
DCM::ConceptId	NL-CM:4.4.3	

DCM::ExampleValue	SNAQ	
DCM::ValueSet	MalnutritionMeasuringMethodCodelist	OID: 2.16.840.1.113883.2.4.3.11.60.40.2.4.4.1
Opties		

«data»	NursingProcedure	
Definitie	The nursing procedures that are/are to be carried out to improve the nutritional condition.	
Datatype		
DCM::ConceptId	NL-CM:4.4.4	
DCM::ExampleValue	Stimuleren van eten	
DCM::ReferencedConceptId	NL-CM:14.2.9	This is a reference to concept VerpleegkundigeActie in information model VerpleegkundigeInterventie.
Opties		

«container»	MalnutritionScore	
Definitie	Container of the MalnutritionScore concept. This container contains all data elements of the MalnutritionScore concept.	
Datatype		
DCM::ConceptId	NL-CM:4.4.5	
Opties		

«data»	SNAQScore	
Definitie	The screening tool to determine the extent of malnutrition following the SNAQ method.	
Datatype		
DCM::ConceptId	NL-CM:4.4.6	
DCM::ReferencedConceptId	NL-CM:4.6.1	This is a reference to concept SNAQScore in information model SNAQScore.
Opties		

«data»	MUSTScore	
Definitie	The screening tool to determine the extent of malnutrition following the MUST method.	
Datatype		
DCM::ConceptId	NL-CM:4.4.7	
DCM::ReferencedConceptId	NL-CM:4.5.1	This is a reference to concept MUSTScore in information model MUSTScore.
Opties		

«document»	MalnutritionMeasuringMethodCodelist			
Definitie				
Datatype				
DCM::ValueSetId	2.16.840.1.113883.2.4.3.11.60.40.2.4.4.1			
Opties				
OndervoedingMeetmethodeCodelijst		OID: 2.16.840.1.113883.2.4.3.11.60.40.2.4.4.1		
Concept Name	Concept Code	CodeSys. Name	CodeSystem OID	Description
SNAQ	8881000146104	SNOMED CT	2.16.840.1.113883.6.96	SNAQ

MUST	414648004	SNOMED CT	2.16.840.1.113883.6.96	MUST
------	-----------	-----------	------------------------	------

1.8 Example Instances

Ondervoeding	
Ondervoed	Ja
OndervoedingMeetmethode	SNAQ
OndervoedingsScore	
SNAQScore	
SnaqScoreDatumTijd	17-02-2014
TotaalScore	2
Toelichting	-
VerpleegkundigeActie	
Activiteit	Tussen de maaltijden extra drinkvoeding geven.

1.9 Instructions

1.10 Interpretation

1.11 Care Process

1.12 Example of the Instrument

1.13 Constraints

1.14 Issues

1.15 References

1. NHG *Landelijke Eerstelijns Samenwerkings Afspraak Ondervoeding* [Online] Beschikbaar op: https://www.nhg.org/sites/default/files/content/nhg_org/uploads/ondervoeding.pdf [Geraadpleegd: 13 februari 2015]

1.16 Functional Model

1.17 Traceability to other Standards

1.18 Disclaimer

The program 'Registratie aan de Bron' [Registration at the Source] is a collaboration between the NFU (Nederlandse Federatie van Universitair Medische Centra, [Netherlands Federation of University Medical Centers]) and Nictiz, hereinafter referred to as the partners. Other parties outside the university medical centers and Nictiz also made important contributions to and worked within 'Registration at the Source'. The parties pay the utmost attention to the reliability and topicality of the data in these Healthcare Information Building Blocks (Clinical Building Block). Omissions and inaccuracies may however occur. The parties are not liable for any damages resulting from omissions or inaccuracies in the information provided, nor are they liable for damages resulting from problems caused by or inherent to distributing information on the internet, such as malfunctions, interruptions, errors or delays in information or services provided by the parties to you or by you to the parties via a website or via e-mail, or any other digital means.

The parties will also not accept liability for any damages resulting from the use of data, advice or ideas provided by or on behalf of the parties by means of this Healthcare Information Building Block. The parties will not accept any liability for the content of information in this Healthcare Information Building Block to which or from which a hyperlink is referred. In the event of contradictions in said Healthcare Information Building Block documents and files, the most recent and highest version of the listed order in the revisions will indicate the priority of the documents in question. If information included in the digital version of this Healthcare Information Building Block is also distributed in writing, the written version will be leading in cases of textual differences. This will apply if both have the same version number and date. A definitive version has priority over a draft version. A revised version has priority over previous versions.

1.19 Terms of Use

The user may use the information in this Healthcare Information Building Block without limitations. The copyright provisions in the paragraph in question apply to copying, distributing and passing on information from this Healthcare Information Building Block.

1.20 Copyrights

The user may copy, distribute and pass on the information in this Healthcare Information Building Block under the conditions that apply for Creative Commons license Attribution-NonCommercial-ShareAlike 3.0 Netherlands (CC BY-NC-SA-3.0),

The content is available under Creative Commons Attribution-NonCommercial-ShareAlike 3.0 (also see <http://creativecommons.org/licenses/by-nc-sa/3.0/nl/>)