

# Health & Care Information Model:

nl.zorg.Pregnancy-v4.1

Status: Final

Release: 2024

Release status: Prepublished

Managed by:



# Content

<b>1. nl.zorg.Pregnancy-v4.1</b> .....	<b>3</b>
1.1 Revision History .....	3
1.2 Concept .....	3
1.3 Mindmap .....	3
1.4 Purpose .....	4
1.5 Patient Population .....	4
1.6 Evidence Base .....	4
1.7 Information Model .....	4
1.8 Example Instances .....	6
1.9 Instructions .....	6
1.10 Interpretation .....	6
1.11 Care Process .....	7
1.12 Example of the Instrument .....	7
1.13 Constraints .....	7
1.14 Issues .....	7
1.15 References .....	7
1.16 Functional Model .....	7
1.17 Traceability to other Standards .....	7
1.18 Disclaimer .....	7
1.19 Terms of Use .....	7
1.20 Copyrights .....	8

# 1. nl.zorg.Pregnancy-v4.1

DCM::CoderList	Werkgroep RadB Verpleegkundige Gegevens
DCM::ContactInformation.Address	*
DCM::ContactInformation.Name	*
DCM::ContactInformation.Telecom	*
DCM::ContentAuthorList	Werkgroep RadB Verpleegkundige Gegevens
DCM::CreationDate	7-7-2014
DCM::DeprecatedDate	
DCM::DescriptionLanguage	nl
DCM::EndorsingAuthority.Address	
DCM::EndorsingAuthority.Name	PM
DCM::EndorsingAuthority.Telecom	
DCM::Id	2.16.840.1.113883.2.4.3.11.60.40.3.7.14
DCM::KeywordList	Zwangerschap, zwanger, graviditeit, pariteit
DCM::LifecycleStatus	Final
DCM::ModelerList	Werkgroep RadB Verpleegkundige Gegevens
DCM::Name	nl.zorg.Zwangerschap
DCM::PublicationDate	15-04-2024
DCM::PublicationStatus	Prepublished
DCM::ReviewerList	Projectgroep RadB Verpleegkundige Gegevens & Kerngroep Registratie aan de Bron
DCM::RevisionDate	30-09-2021
DCM::Supersedes	nl.zorg.Zwangerschap-v4.0
DCM::Version	4.1
HCIM::PublicationLanguage	EN

## 1.1 Revision History

Publicatieversie 1.0 (01-07-2015)

Publicatieversie 3.0 (01-05-2016)

Bevat: ZIB-453.

Publicatieversie 3.1 (04-09-2017)

Bevat: ZIB-436, ZIB-543.

Publicatieversie 3.1.1 (31-01-2020)

Bevat: ZIB-907.

Publicatieversie 4.0 (01-09-2020)

Bevat: ZIB-890.

Publicatieversie 4.1 (01-12-2021)

Bevat: ZIB-1201.

## 1.2 Concept

Pregnancy or gravidity is the condition in which a woman carries a fertilized egg, which grows into an embryo and then a fetus. A pregnancy of between 37 and 42 weeks is considered normal. "Term pregnancy" is 37 to 42 weeks. The term gravidity is also used for the number of times a woman has been pregnant. This and parity - the number of times a woman has given birth - provides insight into the patient's obstetric history.

## 1.3 Mindmap

## 1.4 Purpose

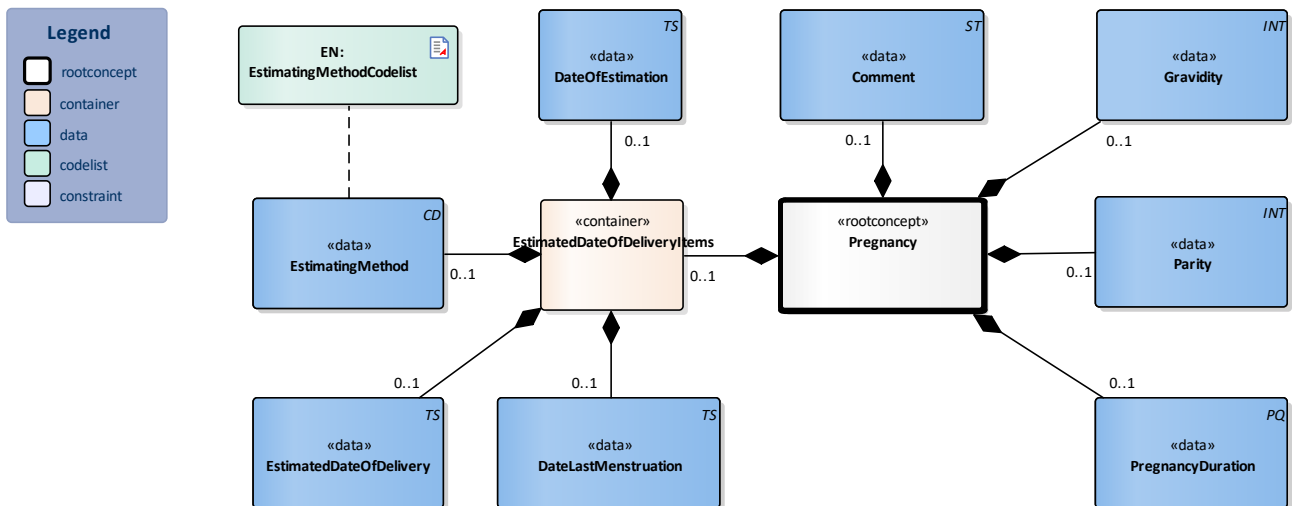
If the patient is pregnant, it is important to mention this, as it requires specific attention in their care. Pregnancy can influence treatment decisions, the treatment itself and the patient's care.

## 1.5 Patient Population

## 1.6 Evidence Base

The standard Perinatology information set was consulted in drawing up this information model.

## 1.7 Information Model



«rootconcept»	Pregnancy	
<b>Definitie</b>	Root concept of the Pregnancy information model. This root concept contains all data elements of the Pregnancy information model.	
<b>Datatype</b>		
<b>DCM::ConceptId</b>	NL-CM:7.14.1	
<b>DCM::DefinitionCode</b>	SNOMED CT: 118185001	
	Finding related to pregnancy	
<b>Opties</b>		

«data»	PregnancyDuration	
<b>Definitie</b>	Duration of the pregnancy on the day on which the patient was asked. The duration can be given in days (d) or weeks (wk).	
<b>Datatype</b>	PQ	
<b>DCM::ConceptId</b>	NL-CM:7.14.4	
<b>DCM::DefinitionCode</b>	SNOMED CT: 57036006 Fetal gestational age	
<b>DCM::ExampleValue</b>	24 wk	
<b>Opties</b>		

«data»	Parity	
<b>Definitie</b>	Number of previous pregnancies ending in partum ( $\geq$ 16w 0d / 112 days).	
<b>Datatype</b>	INT	
<b>DCM::ConceptId</b>	NL-CM:7.14.6	

<b>DCM::DefinitionCode</b>	SNOMED CT: 364325004 Parity	
<b>Opties</b>		

<b>«data»</b>	<b>Gravidity</b>	
<b>Definitie</b>	The number of times the woman has gotten pregnant (including this one).	
<b>Datatype</b>	INT	
<b>DCM::ConceptId</b>	NL-CM:7.14.5	
<b>DCM::DefinitionCode</b>	SNOMED CT: 161732006 Gravida	
<b>Opties</b>		

<b>«data»</b>	<b>Comment</b>	
<b>Definitie</b>	Comment on the pregnancy.	
<b>Datatype</b>	ST	
<b>DCM::ConceptId</b>	NL-CM:7.14.7	
<b>DCM::DefinitionCode</b>	LOINC: 48767-8 Annotation comment	
<b>Opties</b>		

<b>«container»</b>	<b>EstimatedDateOfDeliveryItems</b>	
<b>Definitie</b>	Container of the EstimatedDateOfDeliveryItems concept.This container contains all data elements of the EstimatedDateOfDeliveryItems concept.	
<b>Datatype</b>		
<b>DCM::ConceptId</b>	NL-CM:7.14.9	
<b>Opties</b>		

<b>«data»</b>	<b>EstimatedDateOfDelivery</b>	
<b>Definitie</b>	The date on which the pregnancy is expected to be 40w 0d (280 days). Different due dates are used at various points in the pregnancy.	
<b>Datatype</b>	TS	
<b>DCM::ConceptId</b>	NL-CM:7.14.3	
<b>DCM::DefinitionCode</b>	SNOMED CT: 161714006 Estimated date of delivery	
<b>Opties</b>		

<b>«data»</b>	<b>EstimatingMethod</b>	
<b>Definitie</b>	Method by which the delivery date is estimated.	
<b>Datatype</b>	CD	
<b>DCM::ConceptId</b>	NL-CM:7.14.10	
<b>DCM::ValueSet</b>	EN: EstimatingMethodCodelist	OID: 2.16.840.1.113883.2.4.3.11.60.40.2.7.14.1
<b>Opties</b>		

<b>«data»</b>	<b>DateOfEstimation</b>	
<b>Definitie</b>	Date on which the delivery date is estimated.	
<b>Datatype</b>	TS	
<b>DCM::ConceptId</b>	NL-CM:7.14.11	
<b>Opties</b>		

<b>«data»</b>	<b>DateLastMenstruation</b>	
<b>Definitie</b>	The date on which the last menstruation started.	
<b>Datatype</b>	TS	
<b>DCM::ConceptId</b>	NL-CM:7.14.8	

<b>DCM::DefinitionCode</b>	SNOMED CT: 21840007 Date of last menstrual period	
<b>Opties</b>		

<b>«document»</b>	<b>EN: EstimatingMethodCodelist</b>	
<b>Definitie</b>		
<b>Datatype</b>		
<b>DCM::ValueSetBinding</b>	Extensible	
<b>DCM::ValueSetId</b>	2.16.840.1.113883.2.4.3.11.6 0.40.2.7.14.1	
<b>HCIM::ValueSetLanguage</b>	--	
<b>Opties</b>		

<b>BepalingsMethodeCodelijst</b>			<b>OID: 2.16.840.1.113883.2.4.3.11.60.40.2.7.14.1</b>	
<b>Concept Name</b>	<b>Concept Code</b>	<b>Coding System Name</b>	<b>Coding System OID</b>	<b>Description</b>
Date of delivery estimation based on diagnostic ultrasonography	31541000146106	SNOMED CT	2.16.840.1.113883.6.96	Echoscopie
Date of delivery estimation based on last period	31521000146100	SNOMED CT	2.16.840.1.113883.6.96	Laatste menstruatie
Date of delivery estimation based on ovulation	31531000146103	SNOMED CT	2.16.840.1.113883.6.96	Ovulatie
Other	OTH	NullFlavor	2.16.840.1.113883.5.1008	Anders

	<b>Legend</b>
<b>Definitie</b>	
<b>Datatype</b>	
<b>Opties</b>	

## 1.8 Example Instances

<b>Zwangerschap</b>	
Zwangerschapsduur	24 weken
Graviditeit	2
Pariteit	1
Toelichting	Mevrouw is vaak misselijk in de ochtend.
<b>ATermeDatumItems</b>	
ATermeDatum	08-01-2015
BepalingsMethode	Echoscopie
BepalingsDatum	15-07-2014
DatumLaatsteMenstruatie	--

## 1.9 Instructions

### 1.10 Interpretation

## **1.11 Care Process**

## **1.12 Example of the Instrument**

## **1.13 Constraints**

## **1.14 Issues**

## **1.15 References**

1. Dataset Perinatologie. [Online] Beschikbaar op: <http://www.nictiz.nl/page/Standaarden/Informatiestandaarden/Zwangerschap-en-geboorte> [Geraadpleegd: 13 februari 2015].

## **1.16 Functional Model**

## **1.17 Traceability to other Standards**

## **1.18 Disclaimer**

The Health and Care Information Models (a.k.a Clinical Building Block) has been made in collaboration with several different parties in healthcare. These parties asked Nictiz to manage good maintenance and development of the information models. Hereafter, these parties and Nictiz are referred to as the collaborating parties. The collaborating parties paid utmost attention to the reliability and topicality of the data in these Health and Care Information Models. Omissions and inaccuracies may however occur. The collaborating parties are not liable for any damages resulting from omissions or inaccuracies in the information provided, nor are they liable for damages resulting from problems caused by or inherent to distributing information on the internet, such as malfunctions, interruptions, errors or delays in information or services provide by the parties to you or by you to the parties via a website or via e-mail, or any other digital means. The collaborating parties will also not accept liability for any damages resulting from the use of data, advice or ideas provided by or on behalf of the parties by means of the Health and Care Information Models. The parties will not accept any liability for the content of information in this Health and Care Information Model to which or from which a hyperlink is referred. In the event of contradictions in mentioned Health and Care Information Model documents and files, the most recent and highest version of the listed order in the revisions will indicate the priority of the documents in question. If information included in the digital version of a Health and Care Information Model is also distributed in writing, the written version will be leading in case of textual differences. This will apply if both have the same version number and date. A definitive version has priority over a draft version. A revised version has priority over previous versions.

## **1.19 Terms of Use**

The user may use the Health and Care Information Models without limitations. The copyright provisions in the paragraph concerned apply to copying, distributing and passing on the Health and Care Information Models.

## **1.20 Copyrights**

A Health and Care Information Model qualifies as a work within the meaning of Section 10 of the Copyright Act (Auteurswet). Copyrights protect the Health and Care Information Model and these rights are owned by the cooperating parties.

The user may copy, distribute and pass on the information in this Health and Care Information Model under the conditions that apply for Creative Commons license Attribution-NonCommercial-ShareAlike 3.0 Netherlands (CC BY-NC-SA-3.0).

The content is available under Creative Commons Attribution-NonCommercial-ShareAlike 3.0 (see also <http://creativecommons.org/licenses/by-nc-sa/3.0/nl/>)

This does not apply to information from third parties that sometimes is used and / or referred to in a Health and Care Information Model, for example to an international medical terminology system. Any (copyright) rights that protect this information are not owned by the cooperating parties but by those third parties.



Nictiz is the independent national competence centre for electronic exchange of health and care information. The activities of Nictiz include the targeted development and management of information standards at the request of and in partnership with the stakeholders in healthcare. Nictiz advises these parties on all aspects of information exchange and identifies (future) national and international developments.

**Nictiz**

P.O. Box 19121  
2500 CC Den Haag  
Oude Middenweg 55  
2491 AC Den Haag

070-3173450  
[info@nictiz.nl](mailto:info@nictiz.nl)  
[www.nictiz.nl](http://www.nictiz.nl)

