

# Health & Care Information Model:

nl.zorg.Stoma-v3.4

Status: Final

Release: 2023

Release status: Prepublished

Managed by:



# Content

<b>1. nlzorg.Stoma-v3.4</b>	<b>3</b>
1.1 Revision History	3
1.2 Concept	3
1.3 Purpose	3
1.4 Patient Population	4
1.5 Evidence Base	4
1.6 Information Model	4
1.7 Example Instances	6
1.8 Instructions	6
1.9 Interpretation	6
1.10 Care Process	6
1.11 Example of the Instrument	6
1.12 Constraints	7
1.13 Issues	7
1.14 References	7
1.15 Functional Model	7
1.16 Traceability to other Standards	7
1.17 Disclaimer	7
1.18 Terms of Use	7
1.19 Copyrights	7

## 1. nl.zorg.Stoma-v3.4

DCM::CoderList	Werkgroep RadB Verpleegkundige Gegevens
DCM::ContactInformation.Address	*
DCM::ContactInformation.Name	*
DCM::ContactInformation.Telecom	*
DCM::ContentAuthorList	Werkgroep RadB Verpleegkundige Gegevens
DCM::CreationDate	16-10-2014
DCM::DeprecatedDate	
DCM::DescriptionLanguage	nl
DCM::EndorsingAuthority.Address	
DCM::EndorsingAuthority.Name	PM
DCM::EndorsingAuthority.Telecom	
DCM::Id	2.16.840.1.113883.2.4.3.11.60.40.3.5.2
DCM::KeywordList	Stoma, urostoma
DCM::LifecycleStatus	Final
DCM::ModelerList	Werkgroep RadB Verpleegkundige Gegevens
DCM::Name	nl.zorg.Stoma
DCM::PublicationDate	15-10-2023
DCM::PublicationStatus	Prepublished
DCM::ReviewerList	Projectgroep RadB Verpleegkundige Gegevens & Kerngroep Registratie aan de Bron
DCM::RevisionDate	11-05-2022
DCM::Supersedes	nl.zorg.Stoma-v3.3
DCM::Version	3.4
HCIM::PublicationLanguage	EN

### 1.1 Revision History

Publicatieversie 1.0 (01-07-2015)

Publicatieversie 3.0 (01-05-2016)

Bevat: ZIB-453.

Publicatieversie 3.1 (04-09-2017)

Bevat: ZIB-530, ZIB-537, ZIB-585.

Publicatieversie 3.2 (31-12-2017)

Bevat: ZIB-646.

Publicatieversie 3.3 (01-09-2020)

Bevat: ZIB-1116.

Publicatieversie 3.4 (10-06-2022)

Bevat: ZIB-1596.

### 1.2 Concept

A stoma is an unnatural, surgically created opening connecting a body cavity with the outside world. A stoma is created e.g. as an exit opening for feces or urine in the event that they cannot leave the body naturally. In the case of a tracheostomy, the stoma is intended to facilitate breathing if that is no longer possible via the oral, nasal and throat cavity.

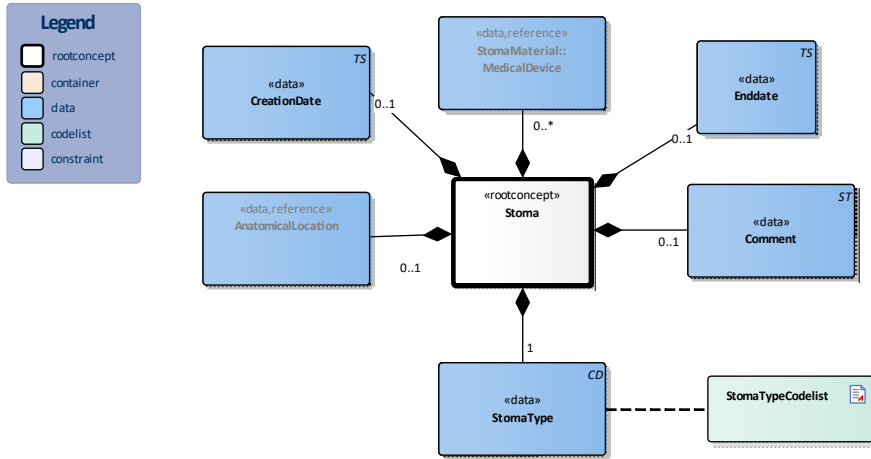
### 1.3 Purpose

Information on present stomas is recorded to inform other health professionals. This information is of importance in determining the care required for the patient. In a transfer situation, the information offers the option to realize continuity of care by organizing specific expertise and materials in advance, for example.

### 1.4 Patient Population

### 1.5 Evidence Base

### 1.6 Information Model



«rootconcept»	Stoma
Definitie	Root concept of the Stoma information model. This root concept contains all data elements of the Stoma information model.
Datatype	
DCM::ConceptId	NL-CM:5.2.1
Opties	

«data»	StomaType
Definitie	Stoma type indicates which body cavity the stoma is in and the kind of stoma used.
Datatype	CD
DCM::ConceptId	NL-CM:5.2.2
DCM::DefinitionCode	SNOMED CT: 245857005 Stoma
DCM::ValueSet	StomaTypeCodelist OID: 2.16.840.1.113883.2.4.3.11.60.40.2.5.2.1
Opties	

«data»	StomaMaterial::MedicalDevice
--------	------------------------------

<b>Definitie</b>	Stoma material describes the medical aids used, such as a skin plate (the adhesive part around the stoma), the stoma pouch (to catch the stoma output) and other stoma aids for caring for the stoma. For tracheostomies, it also describes aids such as voice prostheses and stoma filters. Catheters inserted through the stoma such as tracheal cannulas are not described in this concept. These aids must be modeled in a higher information model describing the catheter and referring to the stoma.	
<b>Datatype</b>		
<b>DCM::ConceptId</b>	NL-CM:5.2.3	
<b>DCM::DefinitionCode</b>	SNOMED CT: 407744008 Stoma appliance	
<b>DCM::ReferencedConceptId</b>	NL-CM:10.1.1	This is a reference to the rootconcept of information model MedicalDevice.
<b>Opties</b>		

<b>«data»</b>	<b>AnatomicalLocation</b>	
<b>Definitie</b>	Anatomical location of the stoma on the patient.	
<b>Datatype</b>		
<b>DCM::ConceptId</b>	NL-CM:5.2.9	
<b>DCM::DefinitionCode</b>	SNOMED CT: 363698007 Finding site	
<b>DCM::ReferencedConceptId</b>	NL-CM:20.7.1	This is a reference to the rootconcept of information model AnatomicalLocation.
<b>Opties</b>		

<b>«data»</b>	<b>CreationDate</b>	
<b>Definitie</b>	The date on which the stoma was created in the patient. A vague date, such as only the year, is permitted.	
<b>Datatype</b>	TS	
<b>DCM::ConceptId</b>	NL-CM:5.2.5	
<b>DCM::ExampleValue</b>	2003	
<b>Opties</b>		

<b>«data»</b>	<b>Enddate</b>	
<b>Definitie</b>	The date the patient's stoma has been removed. A 'vague' date, such as only the year, is permitted.	
<b>Datatype</b>	TS	
<b>DCM::ConceptId</b>	NL-CM:5.2.10	
<b>Opties</b>		

<b>«data»</b>	<b>Comment</b>	
<b>Definitie</b>	A comment on the stoma.	
<b>Datatype</b>	ST	
<b>DCM::ConceptId</b>	NL-CM:5.2.7	
<b>DCM::DefinitionCode</b>	LOINC: 48767-8 Annotation comment	
<b>Opties</b>		

<b>«document»</b>	<b>StomaTypeCodelist</b>	
<b>Definitie</b>		
<b>Datatype</b>		
<b>DCM::ValueSetBinding</b>	Extensible	
<b>DCM::ValueSetId</b>	2.16.840.1.113883.2.4.3.11. 60.40.2.5.2.1	

HCIM::ValueSetLanguage	--	
Opties		

StomaTypeCodelijst			OID: 2.16.840.1.113883.2.4.3.11.60.40.2.5.2.1	
Concept Name	Concept Code	Coding Syst. Name	Coding System OID	Description
urological stoma	281601009	SNOMED CT	2.16.840.1.113883.6.96	urostoma
double-barrelled colostomy	261072008	SNOMED CT	2.16.840.1.113883.6.96	dubbelloops colostoma
end colostomy stoma	261030007	SNOMED CT	2.16.840.1.113883.6.96	eindstandige colostoma
loop ileostomy stoma	311413000	SNOMED CT	2.16.840.1.113883.6.96	dubbelloops ileostoma
end ileostomy stoma	311412005	SNOMED CT	2.16.840.1.113883.6.96	eindstandige ileostoma
tracheostomy stoma	280361007	SNOMED CT	2.16.840.1.113883.6.96	tracheostoma
malone stoma	29241000146106	SNOMED CT	2.16.840.1.113883.6.96	stoma t.b.v. Malone procedure
other	OTH	NullFlavor	2.16.840.1.113883.5.1008	anders

	Legend
Definitie	
Datatype	
Opties	

## 1.7 Example Instances

Stoma	
StomaType	Eindstandige colostoma
AanlegDatum	2014
AnatomischeLocatie	Buik, onder
Lateraliteit	Rechts
StomaMateriaal	
ProductType	Stomazakje
Toelichting	-

## 1.8 Instructions

## 1.9 Interpretation

## 1.10 Care Process

## 1.11 Example of the Instrument

## 1.12 Constraints

## 1.13 Issues

## 1.14 References

1. V&VN afdeling Stomaverpleegkundigen. *Evidence-based Richtlijn Stomazorg Nederland*. (2012) [Online] Beschikbaar op: [http://www.mdl.nl/uploads/240/1143/Evidence-based\\_Richtlijn\\_Stomazorg\\_Nederland.pdf](http://www.mdl.nl/uploads/240/1143/Evidence-based_Richtlijn_Stomazorg_Nederland.pdf) [Geraadpleegd: 13 februari 2015]

## 1.15 Functional Model

## 1.16 Traceability to other Standards

## 1.17 Disclaimer

The Health and Care Information Models (a.k.a Clinical Building Block) has been made in collaboration with several different parties in healthcare. These parties asked Nictiz to manage good maintenance and development of the information models. Hereafter, these parties and Nictiz are referred to as the collaborating parties. The collaborating parties paid utmost attention to the reliability and topicality of the data in these Health and Care Information Models. Omissions and inaccuracies may however occur. The collaborating parties are not liable for any damages resulting from omissions or inaccuracies in the information provided, nor are they liable for damages resulting from problems caused by or inherent to distributing information on the internet, such as malfunctions, interruptions, errors or delays in information or services provided by the parties to you or by you to the parties via a website or via e-mail, or any other digital means. The collaborating parties will also not accept liability for any damages resulting from the use of data, advice or ideas provided by or on behalf of the parties by means of the Health and Care Information Models. The parties will not accept any liability for the content of information in this Health and Care Information Model to which or from which a hyperlink is referred. In the event of contradictions in mentioned Health and Care Information Model documents and files, the most recent and highest version of the listed order in the revisions will indicate the priority of the documents in question. If information included in the digital version of a Health and Care Information Model is also distributed in writing, the written version will be leading in case of textual differences. This will apply if both have the same version number and date. A definitive version has priority over a draft version. A revised version has priority over previous versions.

## 1.18 Terms of Use

The user may use the Health and Care Information Models without limitations. The copyright provisions in the paragraph concerned apply to copying, distributing and passing on the Health and Care Information Models.

## 1.19 Copyrights

A Health and Care Information Model qualifies as a work within the meaning of Section 10 of the Copyright Act (Auteurswet). Copyrights protect the Health and Care Information Model and these rights are owned by the cooperating parties.

The user may copy, distribute and pass on the information in this Health and Care Information Model under the conditions that apply for Creative Commons license Attribution-NonCommercial-ShareAlike 3.0 Netherlands (CC BY-NC-SA-3.0).

The content is available under Creative Commons Attribution-NonCommercial-ShareAlike 3.0 (see also <http://creativecommons.org/licenses/by-nc-sa/3.0/nl/>)

This does not apply to information from third parties that sometimes is used and / or referred to in a Health and Care Information Model, for example to an international medical terminology system. Any (copyright) rights that protect this information are not owned by the cooperating parties but by those third parties.



Nictiz is the independent national competence centre for electronic exchange of health and care information. The activities of Nictiz include the targeted development and management of information standards at the request of and in partnership with the stakeholders in healthcare. Nictiz advises these parties on all aspects of information exchange and identifies (future) national and international developments.

**Nictiz**  
P.O. Box 19121  
2500 CC Den Haag  
Oude Middenweg 55  
2491 AC Den Haag

070-3173450  
[info@nictiz.nl](mailto:info@nictiz.nl)  
[www.nictiz.nl](http://www.nictiz.nl)

**Nictiz**  Better health through  
better information

