

Health & Care Information Model: nl.nfu.SpecificMentalFunctions-v1.0

Status:Final

Release:2015

Release status: Published

Managed by:

Better health
through better IT

Nictiz 

Content

1. nl.nfu.SpecificMentalFunctions-v1.0	3
1.1 Revision History	3
1.2 Concept	3
1.3 Mindmap	3
1.4 Purpose	3
1.5 Patient Population	3
1.6 Evidence Base	4
1.7 Information Model	4
1.8 Example Instances	10
1.9 Instructions	11
1.10 Interpretation	11
1.11 Care Process	11
1.12 Example of the Instrument	11
1.13 Constraints	11
1.14 Issues	11
1.15 References	11
1.16 Functional Model	11
1.17 Traceability to other Standards	12
1.18 Disclaimer	12
1.19 Terms of Use	12
1.20 Copyrights	12

1. nl.nfu.SpecificMentalFunctions-v1.0

DCM::CoderList	Werkgroep RadB Verpleegkundige Gegevens
DCM::ContactInformation.Address	*
DCM::ContactInformation.Name	*
DCM::ContactInformation.Telecom	*
DCM::ContentAuthorList	Werkgroep RadB Verpleegkundige Gegevens
DCM::CreationDate	1-4-2014
DCM::DeprecatedDate	
DCM::DescriptionLanguage	nl
DCM::EndorsingAuthority.Address	
DCM::EndorsingAuthority.Name	NFU & V&VN
DCM::EndorsingAuthority.Telecom	
DCM::Id	2.16.840.1.113883.2.4.3.11.60.40.3.18.4
DCM::KeywordList	Specifieke mentale functies, denken, geheugen, stemming, aandacht
DCM::LifecycleStatus	Final
DCM::ModelerList	Werkgroep RadB Verpleegkundige Gegevens
DCM::Name	nl.nfu.SpecifiekeMentaleFuncties
DCM::PublicationDate	8-9-2015
DCM::PublicationStatus	Published
DCM::ReviewerList	Projectgroep RadB Verpleegkundige Gegevens & Kerngroep Registratie aan de Bron
DCM::RevisionDate	8-9-2015
DCM::Superseeds	
DCM::Version	1.0
HCIM::PublicationLanguage	EN

1.1 Revision History

Publicatieversie 1.0 (01-07-2015)

1.2 Concept

Important parts of the brain's specific mental functions are attention, mood, thought and memory. Disorders in attention, memory and observation combined with orientation and consciousness from the GeneralMentalFunctions building block are seen as important symptoms for a delirium.

The concept specific mental functions does not contain behavior resulting from a mental disorder.

1.3 Mindmap

1.4 Purpose

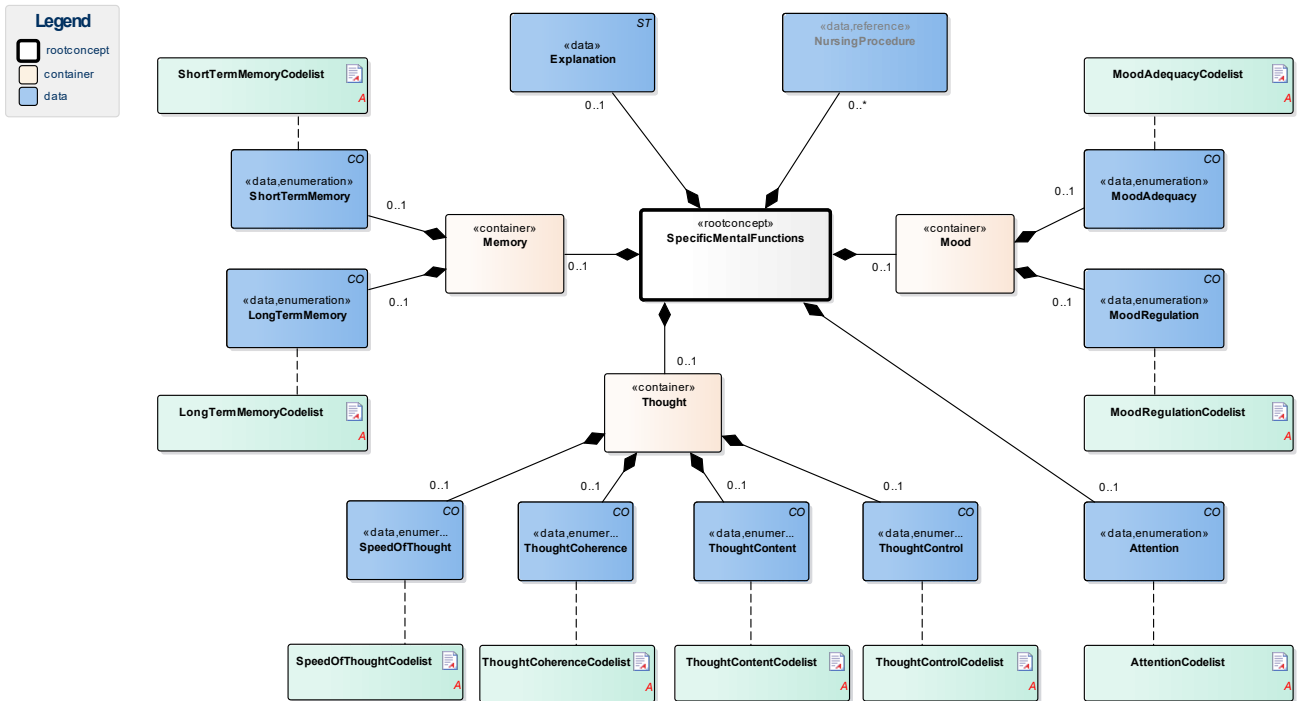
There is a link between the described specific mental functions. In context, insight into any disorders in the function(s) can provide a good picture of the patient's mental state. This information is essential in drawing up the healthcare plan, taking into account the approach and support for the patient within their wishes and possibilities.

1.5 Patient Population

1.6 Evidence Base

The definitions of the concepts were (partially) taken from the ICF definitions.

1.7 Information Model



«rootconcept»	SpecificMentalFunctions
Definitie	Root concept of the SpecificMentalFunctions building block. This concept contains all data elements of the SpecificMentalFunctions building block.
Datatype	
DCM::ConceptId	NL-CM:18.4.1
Opties	

«data»	Attention
Definitie	Attention is the specific mental function linked to focusing on an external stimulus or an internal experience during the required period. This concept includes holding your attention, changing areas of attention, dividing attention, and sharing attention; concentration; distractibility.
Datatype	CO
DCM::ConceptId	NL-CM:18.4.2
DCM::DefinitionCode	ICF: b140 Aandacht
DCM::ExampleValue	Lichte stoornis
DCM::ValueSet	AttentionCodelist OID: 2.16.840.1.113883.2.4.3.11.60.40.2.18.4.1
Opties	

«container»	Memory
Definitie	Container of the Memory concept. This container contains all data

	elements of the Memory concept.	
Datatype		
DCM::ConceptId	NL-CM:18.4.5	
DCM::DefinitionCode	SNOMED CT: 303116000 Memory,function	
Opties		

«data»	ShortTermMemory	
Definitie	The short-term memory includes the temporary memory storage of around 30 seconds, from which information is lost if it is not stored in the long-term memory.	
Datatype	CO	
DCM::ConceptId	NL-CM:18.4.6	
DCM::DefinitionCode	ICF: b1440 Korte termijn geheugen	
DCM::ExampleValue	Matige stoornis	
DCM::ValueSet	ShortTermMemoryCodelist	OID: 2.16.840.1.113883.2.4.3.11.60.40.2.18.4.2
Opties		

«data»	LongTermMemory	
Definitie	The long-term memory contains the memory system which enables a patient to store information from the short-term memory for longer periods of time. This includes both autobiographical memory, in which memories of certain events are stored, and semantic memory for language and facts.	
Datatype	CO	
DCM::ConceptId	NL-CM:18.4.7	
DCM::DefinitionCode	ICF: b1441 Lange termijn geheugen	
DCM::ExampleValue	Lichte stoornis	
DCM::ValueSet	LongTermMemoryCodelist	OID: 2.16.840.1.113883.2.4.3.11.60.40.2.18.4.3
Opties		

«container»	Thought	
Definitie	Container of the Thought concept. This container contains all data elements of the Thought concept.	
Datatype		
DCM::ConceptId	NL-CM:18.4.8	
DCM::DefinitionCode	SNOMED CT: 88952004 Thinking,function	
Opties		

«data»	SpeedOfThought	
Definitie	Speed of thought describes the speed of the thinking process.	
Datatype	CO	
DCM::ConceptId	NL-CM:18.4.9	
DCM::DefinitionCode	ICF: b1600 Denktempo	
DCM::ExampleValue	Lichte stoornis	

DCM::ValueSet	SpeedOfThoughtCodelist	OID: 2.16.840.1.113883.2.4.3.11.60.40.2.18.4.4
Opties		

«data»	ThoughtCoherence	
Definitie	Thought coherence describes the connections within and logic of the thought process. This concept includes superficiality, exhaustive detail and unnecessarily repeating executed procedures, spoken words or sentences and continuing to see past observations.	
Datatype	CO	
DCM::ConceptId	NL-CM:18.4.10	
DCM::DefinitionCode	ICF: b1601 Wijze van denken	
DCM::ExampleValue	Lichte stoornis	
DCM::ValueSet	ThoughtCoherenceCodelist	OID: 2.16.840.1.113883.2.4.3.11.60.40.2.18.4.5
Opties		

«data»	ThoughtContent	
Definitie	Thought content describes the ideas present in the thought process: that which is conceptualized. This concept includes disorders such as fantasies, overvalued concepts and somatization.	
Datatype	CO	
DCM::ConceptId	NL-CM:18.4.11	
DCM::DefinitionCode	ICF: b1602 Inhoud denkproces	
DCM::ExampleValue	Lichte stoornis	
DCM::ValueSet	ThoughtContentCodelist	OID: 2.16.840.1.113883.2.4.3.11.60.40.2.18.4.6
Opties		

«data»	ThoughtControl	
Definitie	The specific mental functions that describe the voluntary control of thought and which are recognized as such by the patient. This concept contains disorders such as getting stuck in certain thoughts, obsession and receiving and experiencing forced thoughts.	
Datatype	CO	
DCM::ConceptId	NL-CM:18.4.12	
DCM::DefinitionCode	ICF: b1603 Controle denkproces	
DCM::ExampleValue	Matige stoornis	
DCM::ValueSet	ThoughtControlCodelist	OID: 2.16.840.1.113883.2.4.3.11.60.40.2.18.4.7
Opties		

«container»	Mood	
Definitie	Container of the Mood concept. This container contains all data elements of the Mood concept.	
Datatype		
DCM::ConceptId	NL-CM:18.4.13	

DCM::DefinitionCode	SNOMED CT: 85256008 Mood,function	
Opties		

«data»	MoodAdequacy	
Definitie	Mood adequacy describes congruence of feeling or affect with the situation, such as happiness when receiving good news.	
Datatype	CO	
DCM::ConceptId	NL-CM:18.4.14	
DCM::DefinitionCode	ICF: b1520 Adequatheid van stemming	
DCM::ExampleValue	Lichte stoornis	
DCM::ValueSet	MoodAdequacyCodelist	OID: 2.16.840.1.113883.2.4.3.11.60.40.2.18.4.8
Opties		

«data»	MoodRegulation	
Definitie	Mood regulation describes experiencing affect and the ability to show affect.	
Datatype	CO	
DCM::ConceptId	NL-CM:18.4.15	
DCM::DefinitionCode	ICF: b1521 Regulering van stemming	
DCM::ExampleValue	Matige stoornis	
DCM::ValueSet	MoodRegulationCodelist	OID: 2.16.840.1.113883.2.4.3.11.60.40.2.18.4.9
Opties		

«data»	NursingProcedure	
Definitie	The nursing procedures needed to help the patient with disorders in specific mental functions.	
Datatype		
DCM::ConceptId	NL-CM:18.4.4	
DCM::ExampleValue	Ondersteunen dagstructuur, begeleiding inname medicatie en controleer op (bij)werking.	
DCM::ReferencedConceptId	NL-CM:14.2.9	This is a reference to concept VerpleegkundigeActie in information model VerpleegkundigeInterventie.
Opties		

«data»	Explanation	
Definitie	An explanation of the specific mental functions.	
Datatype	ST	
DCM::ConceptId	NL-CM:18.4.3	
DCM::DefinitionCode	LOINC: 48767-8 Annotation comment	

DCM::ExampleValue	Patiënt is verhuisd naar een eenpersoonskamer, omdat hij het idee had dat zijn buurman hem bespiedde. Begrijpt niet goed waarom hij in het ziekenhuis ligt.	
Opties		

«document»	AttentionCodelist	
Definitie		
Datatype		
DCM::ValueSetId	2.16.840.1.113883.2.4.3.11.60.40.2.18.4.1	
Opties		

AandachtCodelijst		OID: 2.16.840.1.113883.2.4.3.11.60.40.2.18.4.1		
Concept Name	Concept Code	CodeSys. Name	CodeSystem OID	Description
Geen stoornis	b1520.0	ICF	2.16.840.1.113883.6.254	Stoornis 0-4%
Lichte stoornis	b1520.1	ICF	2.16.840.1.113883.6.254	Stoornis 5-24%
Matige stoornis	b1520.2	ICF	2.16.840.1.113883.6.254	Stoornis 25-49%
Ernstige stoornis	b1520.3	ICF	2.16.840.1.113883.6.254	Stoornis 50-95%
Volledige stoornis	b1520.4	ICF	2.16.840.1.113883.6.254	Stoornis 96-100%

«document»	ShortTermMemoryCodelist	
Definitie		
Datatype		
DCM::ValueSetId	2.16.840.1.113883.2.4.3.11.60.40.2.18.4.2	
Opties		

GeheugenKorteTermijnCodelijst		OID: 2.16.840.1.113883.2.4.3.11.60.40.2.18.4.2		
Concept Name	Concept Code	CodeSys. Name	CodeSystem OID	Description
Geen stoornis	b1440.0	ICF	2.16.840.1.113883.6.254	Stoornis 0-4%
Lichte stoornis	b1440.1	ICF	2.16.840.1.113883.6.254	Stoornis 5-24%
Matige stoornis	b1440.2	ICF	2.16.840.1.113883.6.254	Stoornis 25-49%
Ernstige stoornis	b1440.3	ICF	2.16.840.1.113883.6.254	Stoornis 50-95%
Volledige stoornis	b1440.4	ICF	2.16.840.1.113883.6.254	Stoornis 96-100%

«document»	LongTermMemoryCodelist	
Definitie		
Datatype		
DCM::ValueSetId	2.16.840.1.113883.2.4.3.11.60.40.2.18.4.3	
Opties		

GeheugenLangeTermijnCodelijst		OID: 2.16.840.1.113883.2.4.3.11.60.40.2.18.4.3		
Concept Name	Concept Code	CodeSys. Name	CodeSystem OID	Description
Geen stoornis	b1441.0	ICF	2.16.840.1.113883.6.254	Stoornis 0-4%
Lichte stoornis	b1441.1	ICF	2.16.840.1.113883.6.254	Stoornis 5-24%
Matige stoornis	b1441.2	ICF	2.16.840.1.113883.6.254	Stoornis 25-49%
Ernstige stoornis	b1441.3	ICF	2.16.840.1.113883.6.254	Stoornis 50-95%
Volledige stoornis	b1441.4	ICF	2.16.840.1.113883.6.254	Stoornis 96-100%

«document»		SpeedOfThoughtCodelist		
Definitie				
Datatype				
DCM::ValueSetId		2.16.840.1.113883.2.4.3.11.60.40.2.18.4.4		
Opties				
DenktempoCodelijst		OID: 2.16.840.1.113883.2.4.3.11.60.40.2.18.4.4		
Concept Name	Concept Code	CodeSys. Name	CodeSystem OID	Description
Geen stoornis	b1600.0	ICF	2.16.840.1.113883.6.254	Stoornis 0-4%
Lichte stoornis	b1600.1	ICF	2.16.840.1.113883.6.254	Stoornis 5-24%
Matige stoornis	b1600.2	ICF	2.16.840.1.113883.6.254	Stoornis 25-49%
Ernstige stoornis	b1600.3	ICF	2.16.840.1.113883.6.254	Stoornis 50-95%
Volledige stoornis	b1600.4	ICF	2.16.840.1.113883.6.254	Stoornis 96-100%

«document»		ThoughtCoherenceCodelist		
Definitie				
Datatype				
DCM::ValueSetId		2.16.840.1.113883.2.4.3.11.60.40.2.18.4.5		
Opties				
DenkenCoherentieCodelijst		OID: 2.16.840.1.113883.2.4.3.11.60.40.2.18.4.5		
Concept Name	Concept Code	CodeSys. Name	CodeSystem OID	Description
Geen stoornis	b1601.0	ICF	2.16.840.1.113883.6.254	Stoornis 0-4%
Lichte stoornis	b1601.1	ICF	2.16.840.1.113883.6.254	Stoornis 5-24%
Matige stoornis	b1601.2	ICF	2.16.840.1.113883.6.254	Stoornis 25-49%
Ernstige stoornis	b1601.3	ICF	2.16.840.1.113883.6.254	Stoornis 50-95%
Volledige stoornis	b1601.4	ICF	2.16.840.1.113883.6.254	Stoornis 96-100%

«document»		ThoughtContentCodelist		
Definitie				
Datatype				
DCM::ValueSetId		2.16.840.1.113883.2.4.3.11.60.40.2.18.4.6		
Opties				
DenkenInhoudCodelijst		OID: 2.16.840.1.113883.2.4.3.11.60.40.2.18.4.6		
Concept Name	Concept Code	CodeSys. Name	CodeSystem OID	Description
Geen stoornis	b1602.0	ICF	2.16.840.1.113883.6.254	Stoornis 0-4%
Lichte stoornis	b1602.1	ICF	2.16.840.1.113883.6.254	Stoornis 5-24%
Matige stoornis	b1602.2	ICF	2.16.840.1.113883.6.254	Stoornis 25-49%
Ernstige stoornis	b1602.3	ICF	2.16.840.1.113883.6.254	Stoornis 50-95%
Volledige stoornis	b1602.4	ICF	2.16.840.1.113883.6.254	Stoornis 96-100%

«document»		ThoughtControlCodelist		
Definitie				
Datatype				
DCM::ValueSetId		2.16.840.1.113883.2.4.3.11.60.40.2.18.4.7		
Opties				
DenkenControleCodelijst		OID: 2.16.840.1.113883.2.4.3.11.60.40.2.18.4.7		
Concept Name	Concept Code	CodeSys. Name	CodeSystem OID	Description

Geen stoornis	b1603.0	ICF	2.16.840.1.113883.6.254	Stoornis 0-4%
Lichte stoornis	b1603.1	ICF	2.16.840.1.113883.6.254	Stoornis 5-24%
Matige stoornis	b1603.2	ICF	2.16.840.1.113883.6.254	Stoornis 25-49%
Ernstige stoornis	b1603.3	ICF	2.16.840.1.113883.6.254	Stoornis 50-95%
Volledige stoornis	b1603.4	ICF	2.16.840.1.113883.6.254	Stoornis 96-100%

«document»		MoodAdequacyCodelist		
Definitie				
Datatype				
DCM::ValueSetId		2.16.840.1.113883.2.4.3.11.60.40.2.18.4.8		
Opties				
StemmingAdequatheidCodelijst		OID: 2.16.840.1.113883.2.4.3.11.60.40.2.18.4.8		
Concept Name	Concept Code	CodeSys. Name	CodeSystem OID	Description
Geen stoornis	b1520.0	ICF	2.16.840.1.113883.6.254	Stoornis 0-4%
Lichte stoornis	b1520.1	ICF	2.16.840.1.113883.6.254	Stoornis 5-24%
Matige stoornis	b1520.2	ICF	2.16.840.1.113883.6.254	Stoornis 25-49%
Ernstige stoornis	b1520.3	ICF	2.16.840.1.113883.6.254	Stoornis 50-95%
Volledige stoornis	b1520.4	ICF	2.16.840.1.113883.6.254	Stoornis 96-100%

«document»		MoodRegulationCodelist		
Definitie				
Datatype				
DCM::ValueSetId		2.16.840.1.113883.2.4.3.11.60.40.2.18.4.9		
Opties				
StemmingReguleringCodelijst		OID: 2.16.840.1.113883.2.4.3.11.60.40.2.18.4.9		
Concept Name	Concept Code	CodeSys. Name	CodeSystem OID	Description
Geen stoornis	b1521.0	ICF	2.16.840.1.113883.6.254	Stoornis 0-4%
Lichte stoornis	b1521.1	ICF	2.16.840.1.113883.6.254	Stoornis 5-24%
Matige stoornis	b1521.2	ICF	2.16.840.1.113883.6.254	Stoornis 25-49%
Ernstige stoornis	b1521.3	ICF	2.16.840.1.113883.6.254	Stoornis 50-95%
Volledige stoornis	b1521.4	ICF	2.16.840.1.113883.6.254	Stoornis 96-100%

1.8 Example Instances

Specifieke Mentale Functies	
Aandacht	Lichte stoornis (5-24%)
Geheugen	
Geheugen Korte Termijn	Lichte stoornis (5-24%)
Geheugen Lange Termijn	Matige stoornis (25-49%)
Stemming	
Stemming Adequaatheid	Lichte stoornis (5-24%)
Stemming Regulering	Matige stoornis (25-49%)
Denken	
Denktempo	Lichte stoornis (5-24%)
Denken Coherentie	Lichte stoornis (5-24%)
Denken Inhoud	Lichte stoornis (5-24%)
Denken Controle	Matige stoornis (25-49%)
Verpleegkundige Actie	
Activiteit	Ondersteuning dagstructuur aan de hand van programma, lag op een eenpersoonskamer.
Toelichting	Patiënt is na operatie acuut verward geweest, gaat al wel beter, maar is soms nog weg kwijt. Heeft wel door dat hij soms in de war is en vindt dit erg vervelend.

1.9 Instructions

1.10 Interpretation

1.11 Care Process

1.12 Example of the Instrument

1.13 Constraints

1.14 Issues

1.15 References

1. International Classification of Functioning Disability and Health (ICF) [Online] Beschikbaar op: <http://www.rivm.nl/who-fic/icf.htm> [Geraadpleegd: 13 februari 2015]

1.16 Functional Model

1.17 Traceability to other Standards

1.18 Disclaimer

The program 'Registratie aan de Bron' [Registration at the Source] is a collaboration between the NFU (Nederlandse Federatie van Universitair Medische Centra, [Netherlands Federation of University Medical Centers]) and Nictiz, hereinafter referred to as the partners. Other parties outside the university medical centers and Nictiz also made important contributions to and worked within 'Registration at the Source'. The parties pay the utmost attention to the reliability and topicality of the data in these Healthcare Information Building Blocks (Clinical Building Block). Omissions and inaccuracies may however occur. The parties are not liable for any damages resulting from omissions or inaccuracies in the information provided, nor are they liable for damages resulting from problems caused by or inherent to distributing information on the internet, such as malfunctions, interruptions, errors or delays in information or services provided by the parties to you or by you to the parties via a website or via e-mail, or any other digital means.

The parties will also not accept liability for any damages resulting from the use of data, advice or ideas provided by or on behalf of the parties by means of this Healthcare Information Building Block. The parties will not accept any liability for the content of information in this Healthcare Information Building Block to which or from which a hyperlink is referred.

In the event of contradictions in said Healthcare Information Building Block documents and files, the most recent and highest version of the listed order in the revisions will indicate the priority of the documents in question. If information included in the digital version of this Healthcare Information Building Block is also distributed in writing, the written version will be leading in cases of textual differences. This will apply if both have the same version number and date. A definitive version has priority over a draft version. A revised version has priority over previous versions.

1.19 Terms of Use

The user may use the information in this Healthcare Information Building Block without limitations. The copyright provisions in the paragraph in question apply to copying, distributing and passing on information from this Healthcare Information Building Block.

1.20 Copyrights

The user may copy, distribute and pass on the information in this Healthcare Information Building Block under the conditions that apply for Creative Commons license Attribution-NonCommercial-ShareAlike 3.0 Netherlands (CC BY-NC-SA-3.0),

The content is available under Creative Commons Attribution-NonCommercial-ShareAlike 3.0 (also see <http://creativecommons.org/licenses/by-nc-sa/3.0/nl/>)