

Health & Care Information Model: nl.zorg.TreatmentDirective-v3.1

Status:Final

Release:2017

Release status: Prepublished

Managed by:

Better health
through better IT

Nictiz 

Content

1. nl.zorg.TreatmentDirective-v3.1	3
1.1 Revision History	3
1.2 Concept	3
1.3 Mindmap	3
1.4 Purpose	4
1.5 Patient Population	4
1.6 Evidence Base	4
1.7 Information Model	4
1.8 Example Instances	8
1.9 Instructions	9
1.10 Interpretation	9
1.11 Care Process	9
1.12 Example of the Instrument	9
1.13 Constraints	9
1.14 Issues	9
1.15 References	9
1.16 Functional Model	9
1.17 Traceability to other Standards	9
1.18 Disclaimer	9
1.19 Terms of Use	10
1.20 Copyrights	10

1. nl.zorg.TreatmentDirective-v3.1

DCM::CoderList	Kerngroep Registratie aan de Bron
DCM::ContactInformation.Address	*
DCM::ContactInformation.Name	*
DCM::ContactInformation.Telecom	*
DCM::ContentAuthorList	Projectgroep Generieke Overdrachtsgegevens & Kerngroep Registratie aan de Bron
DCM::CreationDate	25-10-2012
DCM::DeprecatedDate	
DCM::DescriptionLanguage	nl
DCM::EndorsingAuthority.Address	
DCM::EndorsingAuthority.Name	PM
DCM::EndorsingAuthority.Telecom	
DCM::Id	2.16.840.1.113883.2.4.3.11.60.40.3.2.1
DCM::KeywordList	advance directives, behandel aanwijzing, wilsverklaring, behandelbeperking
DCM::LifecycleStatus	Final
DCM::ModelerList	Kerngroep Registratie aan de Bron
DCM::Name	nl.zorg.BehandelAanwijzing
DCM::PublicationDate	04-09-2017
DCM::PublicationStatus	Prepublished
DCM::ReviewerList	Projectgroep Generieke Overdrachtsgegevens & Kerngroep Registratie aan de Bron
DCM::RevisionDate	04-09-2017
DCM::Superseeds	nl.nfu.BehandelAanwijzing-v1.0.1
DCM::Version	3.1
HCIM::PublicationLanguage	EN

1.1 Revision History

Publicatieversie 1.0 (01-04-2015)

Bevat: ZIB-82, ZIB-91, ZIB-133, ZIB-134, ZIB-213, ZIB-215, ZIB-308.

Incl. algemene wijzigingsverzoeken:

ZIB-94, ZIB-154, ZIB-200, ZIB-201, ZIB-309, ZIB-324, ZIB-326.

Publicatieversie 1.0.1 (22-05-2015)

Bevat: ZIB-386.

Publicatieversie 3.0 (01-05-2016)

Bevat: ZIB-453

Publicatieversie 3.1 (04-09-2017)

Bevat: ZIB-549, ZIB-564

1.2 Concept

A treatment instruction includes an agreed constraint in the treatment based on the oral or written living will of the patient.

1.3 Mindmap

1.4 Purpose

A good overview of treatment instructions based on the wishes of the patient or their authorized representative on (un)desired treatments is important in a patient's care. A concise, orderly list is of particular importance in acute care situations. Due to the large variety of symptoms, the situation concerns not only a CPR setting, but also cases in which the patient's condition rapidly worsens as a result of existing symptoms.

A healthcare provider consulting this information can discuss these existing treatment instructions with the patient, the patient's family or the patient's authorized representative and possibly include the instructions in their policy.

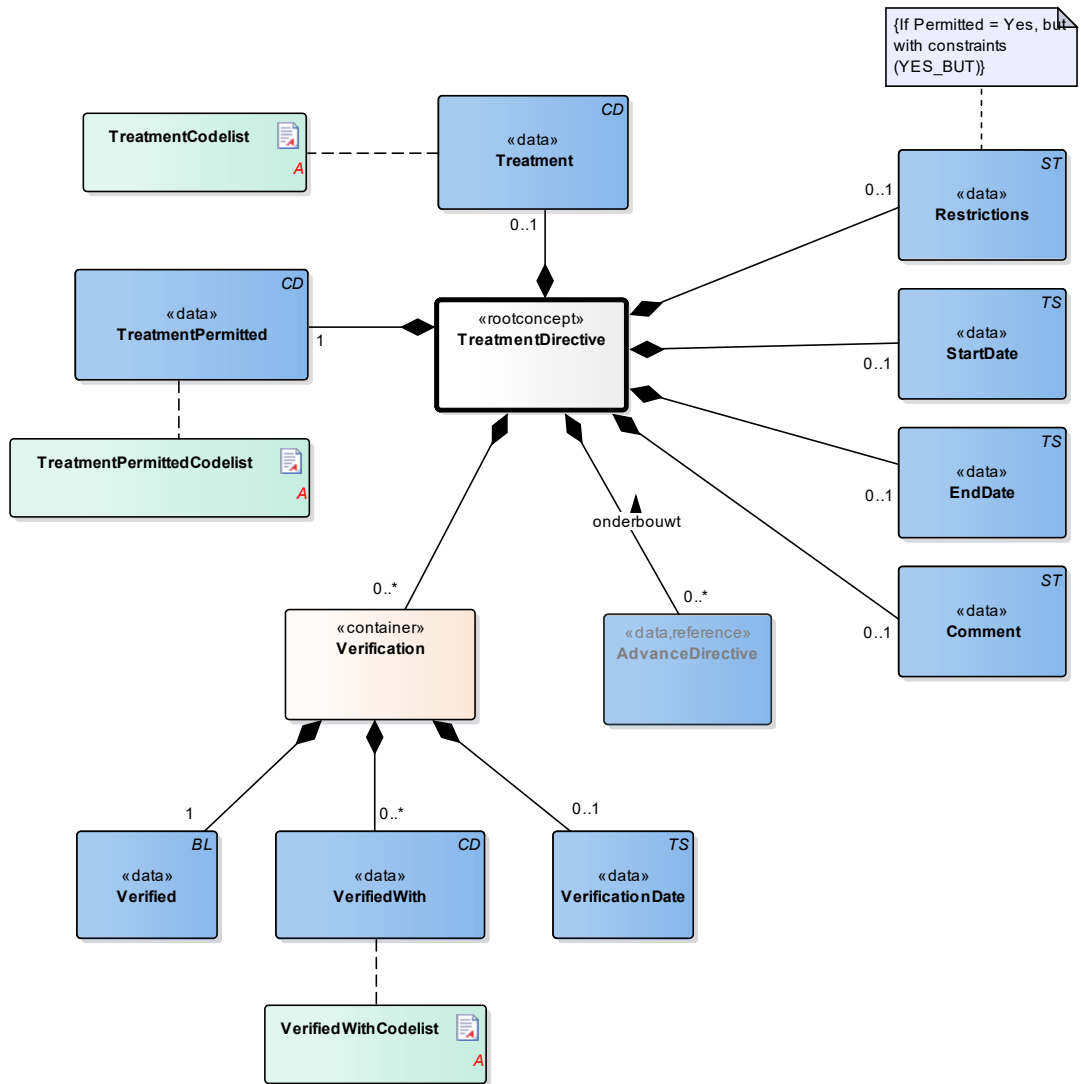
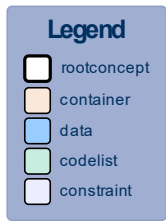
1.5 Patient Population

1.6 Evidence Base

Explanation for TreatmentCodeList:

In discussions on constraints in the therapeutic treatment of patients with a chronic neurological or respiratory condition, respiration is sometimes included as a separate restriction. The 'Respiration' item is to be seen separately from the decisions on CPR.

1.7 Information Model



«rootconcept»	TreatmentDirective
Definitie	Root concept of the TreatmentInstruction information model. This concept contains all data elements of the TreatmentInstruction information model.
Datatype	
DCM::ConceptId	NL-CM:2.1.1
Opties	

«container»	Verification
Definitie	Container of the Verification concept. This container contains all data elements of the Verification concept.
Datatype	
DCM::ConceptId	NL-CM:2.1.8
Opties	

«data»	Verified
Definitie	Indication of the fact that the treatment instruction has been verified with the patient, the patient's family and/or the patient's authorized representative.
Datatype	BL
DCM::ConceptId	NL-CM:2.1.9
DCM::ExampleValue	Ja

Opties	
---------------	--

«data»	VerifiedWith	
Definitie	The person with whom the treatment instruction was discussed and verified.	
Datatype	CD	
DCM::ConceptId	NL-CM:2.1.11	
DCM::ExampleValue	Patient	
DCM::ValueSet	VerifiedWithCodelist	OID: 2.16.840.1.113883.2.4.3.11.60.40.2.2.1.4
Opties		

«data»	VerificationDate	
Definitie	Date on which the verification with the patient, the patient's family and/or the patient's authorized representative took place.	
Datatype	TS	
DCM::ConceptId	NL-CM:2.1.10	
DCM::ExampleValue	11-09-2012	
Opties		

«data»	Treatment	
Definitie	The medical treatment to which the treatment instruction applies.	
Datatype	CD	
DCM::ConceptId	NL-CM:2.1.3	
DCM::DefinitionCode	SNOMED CT: 50731006 Medical procedure (procedure)	
DCM::ExampleValue	Opname op intensive care	
DCM::ValueSet	TreatmentCodelist	OID: 2.16.840.1.113883.2.4.3.11.60.40.2.2.1.1
Opties		

«data»	TreatmentPermitted	
Definitie	Indication of permission for the treatment, no permission for the treatment, or permission for the treatment with constraints.	
Datatype	CD	
DCM::ConceptId	NL-CM:2.1.4	
DCM::ExampleValue	Ja, maar met beperkingen	
DCM::ValueSet	TreatmentPermittedCodelist	OID: 2.16.840.1.113883.2.4.3.11.60.40.2.2.1.2
Opties		

«data»	Restrictions	
Definitie	The restrictions or specific circumstances that apply to a certain treatment.	
Datatype	ST	
DCM::ConceptId	NL-CM:2.1.5	
DCM::ExampleValue	Voor intubatie eerst overleg met echtgenote	
Opties		

«data»	StartDate
Definitie	Date on which the treatment instruction went into effect. A 'vague' date, such as only the year, is permitted.
Datatype	TS
DCM::ConceptId	NL-CM:2.1.6
DCM::ExampleValue	30-08-2012
Opties	

«data»	EndDate
Definitie	Date on which the treatment instruction ends. A 'vague' date, such as only the year, is permitted. If the validity duration of the treatment instruction cannot be expressed as a date, such as "until discharge from hospital", it can be included in the Comment concept.
Datatype	TS
DCM::ConceptId	NL-CM:2.1.7
DCM::ExampleValue	31-06-2013
Opties	

«data»	Comment
Definitie	Comments on the treatment instruction such as a written description of an end date which can be indicated as a date ("until discharge from hospital").
Datatype	ST
DCM::ConceptId	NL-CM:2.1.15
DCM::DefinitionCode	LOINC: 48767-8 Annotation comment
Opties	

«data»	AdvanceDirective
Definitie	A (written) statement in which a person indicates wishes concerning future medical action, in the event that this person is at that point no longer (deemed) capable of taking decisions on the matter.
Datatype	
DCM::ConceptId	NL-CM:2.1.14
DCM::ReferencedConceptId	NL-CM:7.15.1 This is a reference to the rootconcept of information model AdvanceDirective.
Opties	

«document»	TreatmentCodelist
Definitie	
Datatype	
DCM::ValueSetId	2.16.840.1.113883.2.4.3.11.60.40.2.2.1.1
Opties	

BehandelingCodelijst			OID: 2.16.840.1.113883.2.4.3.11.60.40.2.2.1.1	
Concept Name	Concept Code	Coding Syst. Name	Coding System OID	Description
Admission to intensive care unit (procedure)	305351004	SNOMED CT	2.16.840.1.113883.6.96	Opname op intensive care

Cardiopulmonary resuscitation (procedure)	89666000	SNOMED CT	2.16.840.1.113883.6.96	Cardiopulmonaire resuscitatie
Artificial respiration (procedure)	40617009	SNOMED CT	2.16.840.1.113883.6.96	Kunstmatige beademing
Administration of blood product (procedure)	116762002	SNOMED CT	2.16.840.1.113883.6.96	Toediening van een bloedproduct
Other	OTH	NullFlavor	2.16.840.1.113883.5.1008	Overige behandelingen, namelijk (in vrije tekst meegeven)

«document»		TreatmentPermittedCodelist		
Definitie				
Datatype				
DCM::ValueSetId		2.16.840.1.113883.2.4.3.11.60.40.2.2.1.2		
Opties				
BehandelingToegestaanCodelijst			OID: 2.16.840.1.113883.2.4.3.11.60.40.2.2.1.2	
Concept Name	Concept Code	Coding Syst. Name	Coding System OID	Description
Ja	JA	NL-CM-CS	2.16.840.1.113883.2.4.3.11.60.40.4	Behandeling is toegestaan en/of wenselijk.
Ja, maar met beperkingen	JA_MAAAR	NL-CM-CS	2.16.840.1.113883.2.4.3.11.60.40.4	Behandeling toegestaan en/of wenselijk maar met beperkingen die dan ook vermeld moeten worden
Nee	NEE	NL-CM-CS	2.16.840.1.113883.2.4.3.11.60.40.4	Behandeling niet toegestaan en/of wenselijk

«document»		VerifiedWithCodelist		
Definitie				
Datatype				
DCM::ValueSetId		2.16.840.1.113883.2.4.3.11.60.40.2.2.1.4		
Opties				
GeverifieerdBijCodelijst			OID: 2.16.840.1.113883.2.4.3.11.60.40.2.2.1.4	
Concept Name	Concept Code	Coding Syst. Name	Coding System OID	Description
Patient	116154003	SNOMED CT	2.16.840.1.113883.6.96	Patiënt
Parent	40683002	SNOMED CT	2.16.840.1.113883.6.96	Ouder
Guardian	394619001	SNOMED CT	2.16.840.1.113883.6.96	Voogd
Holder of enduring power of attorney	8601000146109	SNOMED CT	2.16.840.1.113883.6.96	Gevolmachtigde
Other	OTH	NullFlavor	2.16.840.1.113883.5.1008	Anders, namelijk (in vrije tekst meegeven)

1.8 Example Instances

Behandeling	Behandeling Toegestaan	Beperkingen	GeverifieerdBij	Verificatie Datum
Opname op Intensive Care	Ja		gevolmachtigde	11-9-2012

Behandeling	Behandeling Toegestaan	Beperkingen	GeverifieerdBij	Verificatie Datum
Cardiopulmonaire resuscitatie	Ja, maar met beperkingen	eerst overleg met echtgenote	patiënt	11-9-2012

1.9 Instructions

1.10 Interpretation

1.11 Care Process

1.12 Example of the Instrument

1.13 Constraints

1.14 Issues

1.15 References

1.16 Functional Model

1.17 Traceability to other Standards

1.18 Disclaimer

This Health and Care Information Model (a.k.a Clinical Building Block) has been made in collaboration with several different parties in healthcare. These parties asked Nictiz to manage good maintenance and development of the information models. Hereafter, these parties and Nictiz are referred to as the collaborating parties. The collaborating parties paid utmost attention to the reliability and topicality of the data in these Health and Care Information Models. Omissions and inaccuracies may however occur. The collaborating parties are not liable for any damages resulting from omissions or inaccuracies in the

information provided, nor are they liable for damages resulting from problems caused by or inherent to distributing information on the internet, such as malfunctions, interruptions, errors or delays in information or services provide by the parties to you or by you to the parties via a website or via e-mail, or any other digital means. The collaborating parties will also not accept liability for any damages resulting from the use of data, advice or ideas provided by or on behalf of the parties by means of this Health and Care Information Model. The parties will not accept any liability for the content of information in this Health and Care Information Model to which or from which a hyperlink is referred. In the event of contradictions in mentioned Health and Care Information Model documents and files, the most recent and highest version of the listed order in the revisions will indicate the priority of the documents in question. If information included in the digital version of this Health and Care Information Model is also distributed in writing, the written version will be leading in case of textual differences. This will apply if both have the same version number and date. A definitive version has priority over a draft version. A revised version has priority over previous versions.

1.19 Terms of Use

The user may use the information in this Health and Care Information Model without limitations. The copyright provisions in the paragraph concerned apply to copying, distributing and passing on information from this Health and Care Information Model.

1.20 Copyrights

The user may copy, distribute and pass on the information in this Health and Care Information Model under the conditions that apply for Creative Commons license Attribution-NonCommercial-ShareAlike 3.0 Netherlands (CC BY-NC-SA-3.0). The content is available under Creative Commons Attribution-NonCommercial-ShareAlike 3.0 (see also <http://creativecommons.org/licenses/by-nc-sa/3.0/nl/>)