

# Health & Care Information Model: nl.zorg.part.BasicElements-v1.0.1

Status:Final

Release:2019

Release status: Prepublished

Managed by:



# Content

<b>1. nl.zorg.part.BasicElements-v1.0.1</b>	<b>3</b>
1.1 Revision History	3
1.2 Concept	3
1.3 Mindmap	3
1.4 Purpose	3
1.5 Patient Population	3
1.6 Evidence Base	4
1.7 Information Model	4
1.8 Example Instances	7
1.9 Instructions	8
1.10 Interpretation	8
1.11 Care Process	9
1.12 Example of the Instrument	9
1.13 Constraints	9
1.14 Issues	9
1.15 References	9
1.16 Functional Model	9
1.17 Traceability to other Standards	9
1.18 Disclaimer	9
1.19 Terms of Use	9
1.20 Copyrights	9

# 1. nl.zorg.part.BasicElements-v1.0.1

DCM::CoderList	
DCM::ContactInformation.Address	
DCM::ContactInformation.Name	
DCM::ContactInformation.Telecom	
DCM::ContentAuthorList	
DCM::CreationDate	20-6-2017
DCM::DeprecatedDate	
DCM::DescriptionLanguage	nl
DCM::EndorsingAuthority.Address	
DCM::EndorsingAuthority.Name	
DCM::EndorsingAuthority.Telecom	
DCM::Id	2.16.840.1.113883.2.4.3.11.60.40.3.0.0
DCM::KeywordList	
DCM::LifecycleStatus	Final
DCM::ModelerList	
DCM::Name	nl.zorg.part.BasisElementen
DCM::PublicationDate	06-07-2019
DCM::PublicationStatus	Prepublished
DCM::ReviewerList	
DCM::RevisionDate	11-10-2018
DCM::Superseeds	nl.zorg.part.BasisElementen-v1.0
DCM::Version	1.0.1
HCIM::PublicationLanguage	EN

## 1.1 Revision History

Publicatieversie 1.0 (04-09-2017)

Publicatieversie 1.01 (26-02-2019)

Bevat: ZIB-736.

## 1.2 Concept

All HCIM's implicitly contain a number of basic elements. These are usually not included in the information models of the individual building blocks, but are supposed to be present.

These are concepts that are of a more technical nature, often have little or no clinical relevance, but are necessary for the sake of clarity and readability of the information. In those cases where these elements are of clinical significance, they will usually be explicit in the information models. An example of this is an AGB number as an identification number for a health professional.

## 1.3 Mindmap

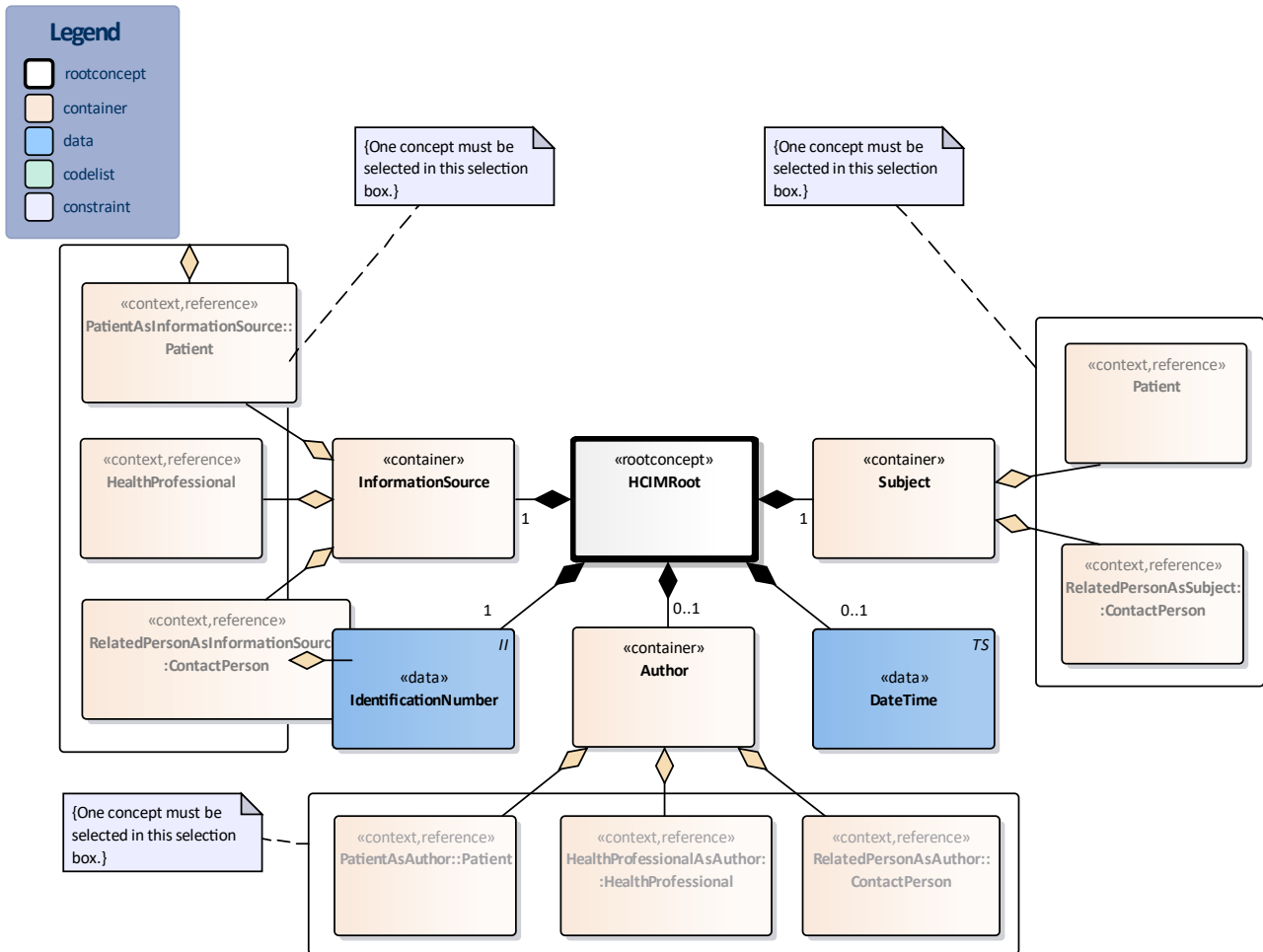
## 1.4 Purpose

The basic elements of a HCIM make the information that is contained by an instance of an HCIM identifiable and traceable. These are elements that are important for e.g. auditing purposes.

## 1.5 Patient Population

## 1.6 Evidence Base

## 1.7 Information Model



<b>«rootconcept»</b>	HCIMRoot	
<b>Definitie</b>	Rootconcept of the information model in question	
<b>Datatype</b>		
<b>DCM::ConceptId</b>	NL-CM:0.0.1	
<b>Opties</b>		

<b>«data»</b>	IdentificationNumber	
<b>Definitie</b>	Globally unique number that identifies the instantiation of the information model. The number is composed of an identification of the issuer organization and a unique number assigned by this organization	
<b>Datatype</b>	II	
<b>DCM::AssigningAuthority</b>	AssigningAuthority	OID: AssigningAuthorityOID
<b>DCM::ConceptId</b>	NL-CM:0.0.6	
<b>DCM::DefinitionCode</b>	SNOMED CT:396278008	Identification number
<b>Opties</b>		

<b>«container»</b>	InformationSource	
<b>Definitie</b>	The person who provided the information and ensures the correctness of	

	<p>it.</p> <p>This is not always a healthprofessional, but it may also be the patient or another person, such as a parent, caretaker or guardian.</p> <p>The source of information does not have to be the author of the information, who in that case is only instrumental in capturing the information.</p>	
<b>Datatype</b>		
<b>DCM::ConceptId</b>	NL-CM:0.0.2	
<b>DCM::DefinitionCode</b>	SNOMED CT:385438008	
	Source of information (attribute)	
<b>Opties</b>		

<b>«context»</b>	<b>PatientAsInformationSource::Patient</b>	
<b>Definitie</b>	The patient as source of the information	
<b>Datatype</b>		
<b>DCM::ConceptId</b>	NL-CM:0.0.3	
<b>DCM::ReferencedConceptId</b>	NL-CM:0.1.1	This is a reference to the rootconcept of information model Patient.
<b>Opties</b>		

<b>«context»</b>	<b>HealthProfessional</b>	
<b>Definitie</b>	The health professional as source of the information	
<b>Datatype</b>		
<b>DCM::ConceptId</b>	NL-CM:0.0.4	
<b>DCM::ReferencedConceptId</b>	NL-CM:17.1.1	This is a reference to the rootconcept of information model HealthProfessional.
<b>Opties</b>		

<b>«context»</b>	<b>RelatedPersonAsInformationSource::ContactPerson</b>	
<b>Definitie</b>	The related person (parent, caregiver, ...) as source of the information	
<b>Datatype</b>		
<b>DCM::ConceptId</b>	NL-CM:0.0.5	
<b>DCM::ReferencedConceptId</b>	NL-CM:3.1.1	This is a reference to the rootconcept of information model Contactperson.
<b>Opties</b>		

<b>«container»</b>	<b>Author</b>	
<b>Definitie</b>	The person who has recorded the information. Depending on the information system in which the data is recorded, this may be the patient, healthcare provider or other person.	
<b>Datatype</b>		
<b>DCM::ConceptId</b>	NL-CM:0.0.7	
<b>Opties</b>		

<b>«context»</b>	<b>PatientAsAuthor::Patient</b>	
<b>Definitie</b>	The patient as author of the information	
<b>Datatype</b>		
<b>DCM::ConceptId</b>	NL-CM:0.0.8	
<b>DCM::ReferencedConceptId</b>	NL-CM:0.1.1	This is a reference to the rootconcept of information model Patient.
<b>Opties</b>		

<b>«context»</b>	<b>HealthProfessionalAsAuthor::HealthProfessional</b>	
------------------	---	--

<b>Definitie</b>	The health professional as author of the information	
<b>Datatype</b>		
<b>DCM::ConceptId</b>	NL-CM:0.0.9	
<b>DCM::ReferencedConceptId</b>	NL-CM:17.1.1	This is a reference to the rootconcept of information model HealthProfessional.
<b>Opties</b>		

<b>«context»</b>	<b>RelatedPersonAsAuthor::ContactPerson</b>	
<b>Definitie</b>	The related person (parent, caregiver, ...) as author of the information	
<b>Datatype</b>		
<b>DCM::ConceptId</b>	NL-CM:0.0.10	
<b>DCM::ReferencedConceptId</b>	NL-CM:3.1.1	This is a reference to the rootconcept of information model Contactperson.
<b>Opties</b>		

<b>«container»</b>	<b>Subject</b>	
<b>Definitie</b>	The person to whom the information relates. Often this will be the patient, but especially in the case of small children as patients it may be information about the parent or caregiver. Especially in the nurse transfers, for example, Competence and involvement of caregivers carries a role.	
<b>Datatype</b>		
<b>DCM::ConceptId</b>	NL-CM:0.0.11	
<b>DCM::DefinitionCode</b>	SNOMED CT:131195008	Subject of information
<b>Opties</b>		

<b>«context»</b>	<b>Patient</b>	
<b>Definitie</b>	The patient as subject of the information	
<b>Datatype</b>		
<b>DCM::ConceptId</b>	NL-CM:0.0.12	
<b>DCM::ReferencedConceptId</b>	NL-CM:0.1.1	This is a reference to the rootconcept of information model Patient.
<b>Opties</b>		

<b>«context»</b>	<b>RelatedPersonAsSubject::ContactPerson</b>	
<b>Definitie</b>	The related person (parent, caregiver, ...) as subject of the information	
<b>Datatype</b>		
<b>DCM::ConceptId</b>	NL-CM:0.0.13	
<b>DCM::ReferencedConceptId</b>	NL-CM:3.1.1	This is a reference to the rootconcept of information model Contactperson.
<b>Opties</b>		

<b>«data»</b>	<b>DateTime</b>	
<b>Definitie</b>	Date and if relevant the time the event to which the information relates took place . This is the medically relevant date and time.	
<b>Datatype</b>	TS	
<b>DCM::ConceptId</b>	NL-CM:0.0.14	
<b>DCM::DefinitionCode</b>	SNOMED CT:439771001	Date of event
<b>Opties</b>		

	<b>Legend</b>	
<b>Definitie</b>		

<b>Datatype</b>	
<b>Opties</b>	

## 1.8 Example Instances

Basis Elementen	
Identificatienummer	01229993999444
Datum	16-05-2016
Onderwerp: Patiënt	
Naamgegevens	
PatiëntIdentificatienummer	111222333
Achternaam	Putten
Voorvoegsels	van
AchternaamPartner	Giessen
VoorvoegselsPartner	van der
Voornamen	Johanna Petronella Maria
Geslacht	Vrouw
Geboortedatum	28-04-1934
Adresgegevens*	
Straat	1e Jacob van Campenstr
Huisnummer	15
Woonplaats	Hoogmade
Gemeente	Kaag en Braassem
Postcode	1012 NX
AdresSoort	Woon-/verblijfadres
Land	Nederland
Informatiebron: Contactpersoon	
Rol	Eerste contactpersoon
Relatie	Dochter
Naam	
Geslachtsnaam	van Putten
Voornamen	F.P.
Auteur: Zorgverlener	
ZorgverlenerIdentificatieNummer	21870932
ZorgverlenerRol	Hoofdbehandelaar
Specialisme	Neuroloog
ZorgverlenerNaam	
Initialen	J.H.R.
Geslachtsnaam	Peters
Adres	
Straat	Simon Smitweg
Huisnummer	1
Woonplaats	Leiderdorp
Postcode	2353 GA
AdresSoort	Werkadres
Land	Nederland

## 1.9 Instructions

### 1.10 Interpretation



## **1.11 Care Process**

## **1.12 Example of the Instrument**

## **1.13 Constraints**

## **1.14 Issues**

## **1.15 References**

## **1.16 Functional Model**

## **1.17 Traceability to other Standards**

## **1.18 Disclaimer**

The Health and Care Information Models (a.k.a Clinical Building Block) has been made in collaboration with several different parties in healthcare. These parties asked Nictiz to manage good maintenance and development of the information models. Hereafter, these parties and Nictiz are referred to as the collaborating parties. The collaborating parties paid utmost attention to the reliability and topicality of the data in these Health and Care Information Models. Omissions and inaccuracies may however occur. The collaborating parties are not liable for any damages resulting from omissions or inaccuracies in the information provided, nor are they liable for damages resulting from problems caused by or inherent to distributing information on the internet, such as malfunctions, interruptions, errors or delays in information or services provide by the parties to you or by you to the parties via a website or via e-mail, or any other digital means. The collaborating parties will also not accept liability for any damages resulting from the use of data, advice or ideas provided by or on behalf of the parties by means of the Health and Care Information Models. The parties will not accept any liability for the content of information in this Health and Care Information Model to which or from which a hyperlink is referred. In the event of contradictions in mentioned Health and Care Information Model documents and files, the most recent and highest version of the listed order in the revisions will indicate the priority of the documents in question. If information included in the digital version of a Health and Care Information Model is also distributed in writing, the written version will be leading in case of textual differences. This will apply if both have the same version number and date. A definitive version has priority over a draft version. A revised version has priority over previous versions.

## **1.19 Terms of Use**

The user may use the Health and Care Information Models without limitations. The copyright provisions in the paragraph concerned apply to copying, distributing and passing on the Health and Care Information Models.

## **1.20 Copyrights**

A Health and Care Information Model qualifies as a work within the meaning of Section 10 of the Copyright Act (Auteurswet). Copyrights protect the Health and Care Information Model and these rights are owned by the cooperating parties.

The user may copy, distribute and pass on the information in this Health and Care Information Model under the conditions that apply for Creative Commons license Attribution-NonCommercial-ShareAlike 3.0 Netherlands (CC BY-NC-SA-3.0).

The content is available under Creative Commons Attribution-NonCommercial-ShareAlike 3.0 (see also <http://creativecommons.org/licenses/by-nc-sa/3.0/nl/>)

This does not apply to information from third parties that sometimes is used and / or referred to in a Health and Care Information Model, for example to an international medical terminology system. Any (copyright) rights that protect this information are not owned by the cooperating parties but by those third parties.