

Health & Care Information Model:

nl.zorg.Exclusion-v1.1

Status: Final

Release: 2024

Release status: Published

Managed by:



Content

1. nl.zorg.Exclusion-v1.1.....	3
1.1 Revision History.....	3
1.2 Concept	3
1.3 Mindmap	3
1.4 Purpose.....	3
1.5 Patient Population	3
1.6 Evidence Base	3
1.7 Information Model	4
1.8 Example Instances.....	5
1.9 Instructions.....	6
1.10 Interpretation.....	6
1.11 Care Process	6
1.12 Example of the Instrument	6
1.13 Constraints.....	6
1.14 Issues.....	6
1.15 References	6
1.16 Functional Model	6
1.17 Traceability to other Standards.....	6
1.18 Disclaimer	7
1.19 Terms of Use	7
1.20 Copyrights.....	7

1. nl.zorg.Exclusion-v1.1

DCM::CoderList	Zib-centrum
DCM::ContactInformation.Address	*
DCM::ContactInformation.Name	*
DCM::ContactInformation.Telecom	*
DCM::ContentAuthorList	Zib-centrum
DCM::CreationDate	31-01-2024
DCM::DeprecatedDate	
DCM::DescriptionLanguage	nl
DCM::EndorsingAuthority.Address	
DCM::EndorsingAuthority.Name	*
DCM::EndorsingAuthority.Telecom	
DCM::Id	2.16.840.1.113883.2.4.3.11.60.40.3.5.7
DCM::KeywordList	
DCM::LifecycleStatus	Final
DCM::ModelerList	*
DCM::Name	nl.zorg.Uitsluiting
DCM::PublicationDate	23-04-2025
DCM::PublicationStatus	Published
DCM::ReviewerList	Zib-centrum
DCM::RevisionDate	17-04-2025
DCM::Supersedes	nl.zorg.Uitsluiting-v1.0
DCM::Version	1.1
HCIM::PublicationLanguage	EN

1.1 Revision History

Publicatieversie 1.0 (15-04-2024)

Bevat:

Publicatieversie 1.1 (23-04-2025)

Bevat: ZIB-2747.

1.2 Concept

An explicit statement about exclusion of a specific condition or state.

1.3 Mindmap

1.4 Purpose

Explicitly assessing the absence of a condition or state.

1.5 Patient Population

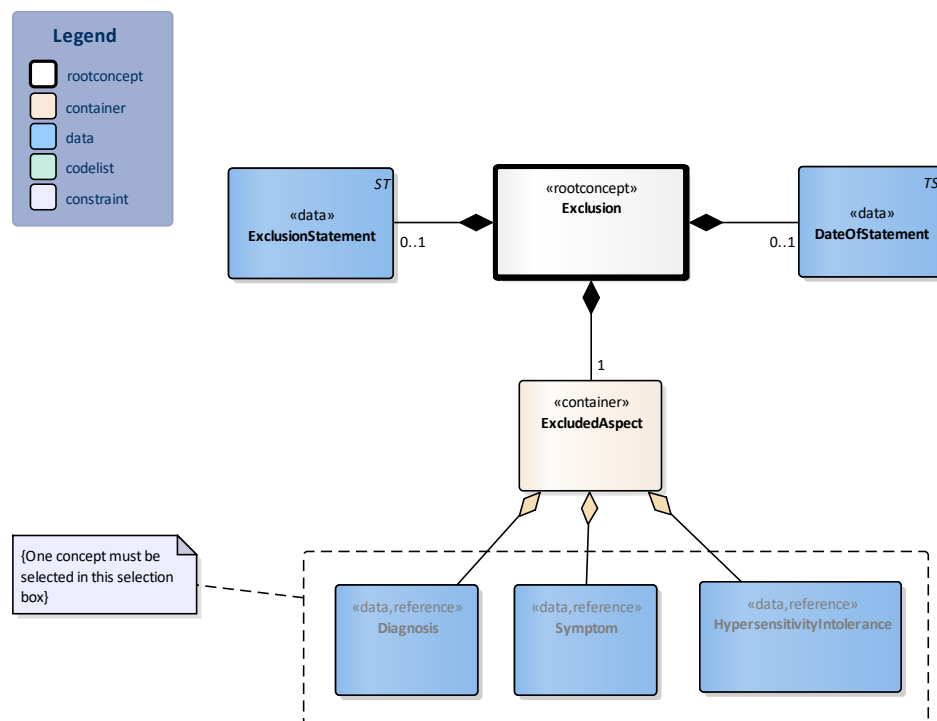
1.6 Evidence Base

The absence of a clinical concept is not a property of that concept, but a statement about the concept. That is why HCIM's such as DiagnosticInsight do not contain presence status. To explicitly indicate that a health aspect is not present, the HCIM Exclusion is used, which refers to a HCIM that models the excluded aspect. Of these HCIM's, only those elements that name the aspect are used, such as the name. By referring to the relevant HCIM's, semantic unification is achieved with regard to naming.

This HCIM shall not be used in the next situations:

- In the context of the tract anamneses or a questionnaire, often a large number of health aspects are reviewed, whereby it is determined whether or not the patient is familiar with them, resulting in a 'yes/no' choice. This HCIM is not intended for these situations. This can be supported with a HCIM based on the HCIM template Patient Questionnaire.
- Findings such as 'No known allergies' et cetera cannot be captured with the Exclusion HCIM, as this would require that the concept of 'Known allergies' be modeled with (in this case) the Hypersensitivity HCIM. Such a statement, which refers to a list or section, must be implemented in an information standard at the according level.
- If a condition or symptom is no longer present (but was present before) this is indicated by the course element.

1.7 Information Model



«rootconcept»	Exclusion	
Definitie	This is a reference to the rootconcept of information model Exclusion.	
Datatype		
DCM::ConceptId	NL-CM:5.7.1	
DCM::DefinitionCode	SNOMED CT: 413350009	
	Finding with explicit context	
Opties		

«data»	DateOfStatement	
Definitie	Date on which it was assessed that the concept was not present.	
Datatype	TS	
DCM::ConceptId	NL-CM:5.7.2	
Opties		

«data»	ExclusionStatement	
Definitie	Statement of exclusion. Default the text is 'No known..' or 'No known history of ..'	
Datatype	ST	
DCM::ConceptId	NL-CM:5.7.3	
Opties		

«container»	ExcludedAspect	
Definitie	Container of the ExcludedAspect concept. This container contains all data elements of the ExcludedAspect concept.	
Datatype		
DCM::ConceptId	NL-CM:5.7.4	
Opties		

«data»	Diagnosis	
Definitie	Diagnosis that is excluded.	
Datatype		
DCM::ConceptId	NL-CM:5.7.5	
DCM::ReferencedConceptId	NL-CM:5.6.1	This is a reference to the rootconcept of information model Diagnosis.
Opties		

«data»	Symptom	
Definitie	Symptom that is excluded.	
Datatype		
DCM::ConceptId	NL-CM:5.7.6	
DCM::ReferencedConceptId	NL-CM:5.5.1	This is a reference to the rootconcept of information model Symptom.
Opties		

«data»	HypersensitivityIntolerance	
Definitie	Hypersensitivity or intolerance that is excluded.	
Datatype		
DCM::ConceptId	NL-CM:5.7.7	
DCM::ReferencedConceptId	NL-CM:8.6.1	This is a reference to the rootconcept of information model HypersensitivityIntolerance.
Opties		

	Legend	
Definitie		
Datatype		
Opties		

	Constraint	
Definitie	One concept must be selected in this selection box	
Datatype		
Opties		

1.8 Example Instances

Uitsluiting			
Uitsluitingsverklaring	DatumVaststelling	UitgeslotenAspect::DiagnostischInzicht	
		DiagnoseNaam	NadereSpecificatieDiagnoseNaam
Geen bekendheid met	04-12-2019	Diabetes mellitus type 2	--

1.9 Instructions

When referring to the underlying HCIMs, only a limited number of fields of these HCIM's are filled. These are respectively

- DiagnosticInsight (constraint: not a differential diagnosis):
 - ◆ DiagnosisName
 - ◆ if relevant, FurtherSpecificationDiagnosisName
- Symptom
 - ◆ SymptomName
 - ◆ if relevant, FurtherSpecificationSymptomName
- HypersensitivityIntolerance
 - ◆ DiagnosisName
 - ◆ if relevant, FurtherSpecificationDiagnosisName
 - ◆ Substance or Radiation

In none of the above three cases is a reference made to the HCIM Condition, as the current HCIM models the absence of the condition.

1.10 Interpretation

1.11 Care Process

1.12 Example of the Instrument

1.13 Constraints

1.14 Issues

1.15 References

1.16 Functional Model

1.17 Traceability to other Standards

1.18 Disclaimer

The Health and Care Information Models (a.k.a Clinical Building Block) has been made in collaboration with several different parties in healthcare. These parties asked Nictiz to manage good maintenance and development of the information models. Hereafter, these parties and Nictiz are referred to as the collaborating parties. The collaborating parties paid utmost attention to the reliability and topicality of the data in these Health and Care Information Models. Omissions and inaccuracies may however occur. The

collaborating parties are not liable for any damages resulting from omissions or inaccuracies in the information provided, nor are they liable for damages resulting from problems caused by or inherent to distributing information on the internet, such as malfunctions, interruptions, errors or delays in information or services provided by the parties to you or by you to the parties via a website or via e-mail, or any other digital means. The collaborating parties will also not accept liability for any damages resulting from the use of data, advice or ideas provided by or on behalf of the parties by means of the Health and Care Information Models. The parties will not accept any liability for the content of information in this Health and Care Information Model to which or from which a hyperlink is referred. In the event of contradictions in mentioned Health and Care Information Model documents and files, the most recent and highest version of the listed order in the revisions will indicate the priority of the documents in question. If information included in the digital version of a Health and Care Information Model is also distributed in writing, the written version will be leading in case of textual differences. This will apply if both have the same version number and date. A definitive version has priority over a draft version. A revised version has priority over previous versions.

1.19 Terms of Use

The user may use the Health and Care Information Models without limitations. The copyright provisions in the paragraph concerned apply to copying, distributing and passing on the Health and Care Information Models.

1.20 Copyrights

A Health and Care Information Model qualifies as a work within the meaning of Section 10 of the Copyright Act (Auteurswet). Copyrights protect the Health and Care Information Models and these rights are owned by the cooperating parties.

The user may copy, distribute and pass on the information in this Health and Care Information Model under the conditions that apply for Creative Commons license Attribution-NonCommercial-ShareAlike 3.0 Netherlands (CC BY-NC-SA-3.0).

The content is available under Creative Commons Attribution-NonCommercial-ShareAlike 3.0 (see also <http://creativecommons.org/licenses/by-nc-sa/3.0/nl/>)

This does not apply to information from third parties that sometimes is used and / or referred to in a Health and Care Information Model, for example to an international medical terminology system. Any (copyright) rights that protect this information are not owned by the cooperating parties but by those third parties.

Nictiz is the independent national competence centre for electronic exchange of health and care information. The activities of Nictiz include the targeted development and management of information standards at the request of and in partnership with the stakeholders in healthcare. Nictiz advises these parties on all aspects of information exchange and identifies (future) national and international developments.

Nictiz

P.O. Box 19121
2500 CC Den Haag
Oude Middenweg 55
2491 AC Den Haag

070-3173450
info@nictiz.nl
www.nictiz.nl

