

Health & Care Information Model:

nl.zorg.AlcoholUse-v3.1

Status:Final

Release:2019

Release status: Prepublished

Managed by:



Content

1. nl.zorg.AlcoholUse-v3.1	3
1.1 Revision History	3
1.2 Concept	3
1.3 Mindmap	4
1.4 Purpose	4
1.5 Patient Population	4
1.6 Evidence Base	4
1.7 Information Model	4
1.8 Example Instances	6
1.9 Instructions	6
1.10 Interpretation	6
1.11 Care Process	6
1.12 Example of the Instrument	6
1.13 Constraints	7
1.14 Issues	7
1.15 References	7
1.16 Functional Model	7
1.17 Traceability to other Standards	7
1.18 Disclaimer	7
1.19 Terms of Use	7
1.20 Copyrights	7

1. nl.zorg.AlcoholUse-v3.1

DCM::CoderList	Kerngroep Registratie aan de Bron
DCM::ContactInformation.Address	*
DCM::ContactInformation.Name	*
DCM::ContactInformation.Telecom	*
DCM::ContentAuthorList	Projectgroep Generieke Overdrachtsgegevens & Kerngroep Registratie aan de Bron
DCM::CreationDate	30-12-2015
DCM::DeprecatedDate	
DCM::DescriptionLanguage	nl
DCM::EndorsingAuthority.Address	
DCM::EndorsingAuthority.Name	PM
DCM::EndorsingAuthority.Telecom	
DCM::Id	2.16.840.1.113883.2.4.3.11.60.40.3.7.3
DCM::KeywordList	social history, sociale anamnese, alcohol
DCM::LifecycleStatus	Final
DCM::ModelerList	Kerngroep Registratie aan de Bron
DCM::Name	nl.zorg.AlcoholGebruik
DCM::PublicationDate	06-07-2019
DCM::PublicationStatus	Prepublished
DCM::ReviewerList	Projectgroep Generieke Overdrachtsgegevens & Kerngroep Registratie aan de Bron
DCM::RevisionDate	31-12-2017
DCM::Superseeds	nl.zorg.AlcoholGebruik-v3.0
DCM::Version	3.1
HCIM::PublicationLanguage	EN

1.1 Revision History

Publicatieversie 1.0 (15-02-2013)

-

Publicatieversie 1.1 (01-07-2013)

-

Publicatieversie 1.2 (01-04-2015)

Bevat: ZIB-116, ZIB-117, ZIB-167, ZIB-235, ZIB-308, ZIB-345.

Incl. algemene wijzigingsverzoeken:

ZIB-94, ZIB-154, ZIB-200, ZIB-201, ZIB-309, ZIB-324, ZIB-326.

Publicatieversie 1.2.1 (22-05-2015)

Bevat: ZIB-378.

Publicatieversie 3.0 (01-05-2016)

Bevat: ZIB-453

Publicatieversie 3.1 (04-09-2017)

Bevat: ZIB-488, ZIB-564

1.2 Concept

In the context of this information model, alcohol is the collective term for alcoholic beverages consumed as a leisure product. This information model describes the information asked of the patient about their alcohol

use.

1.3 Mindmap

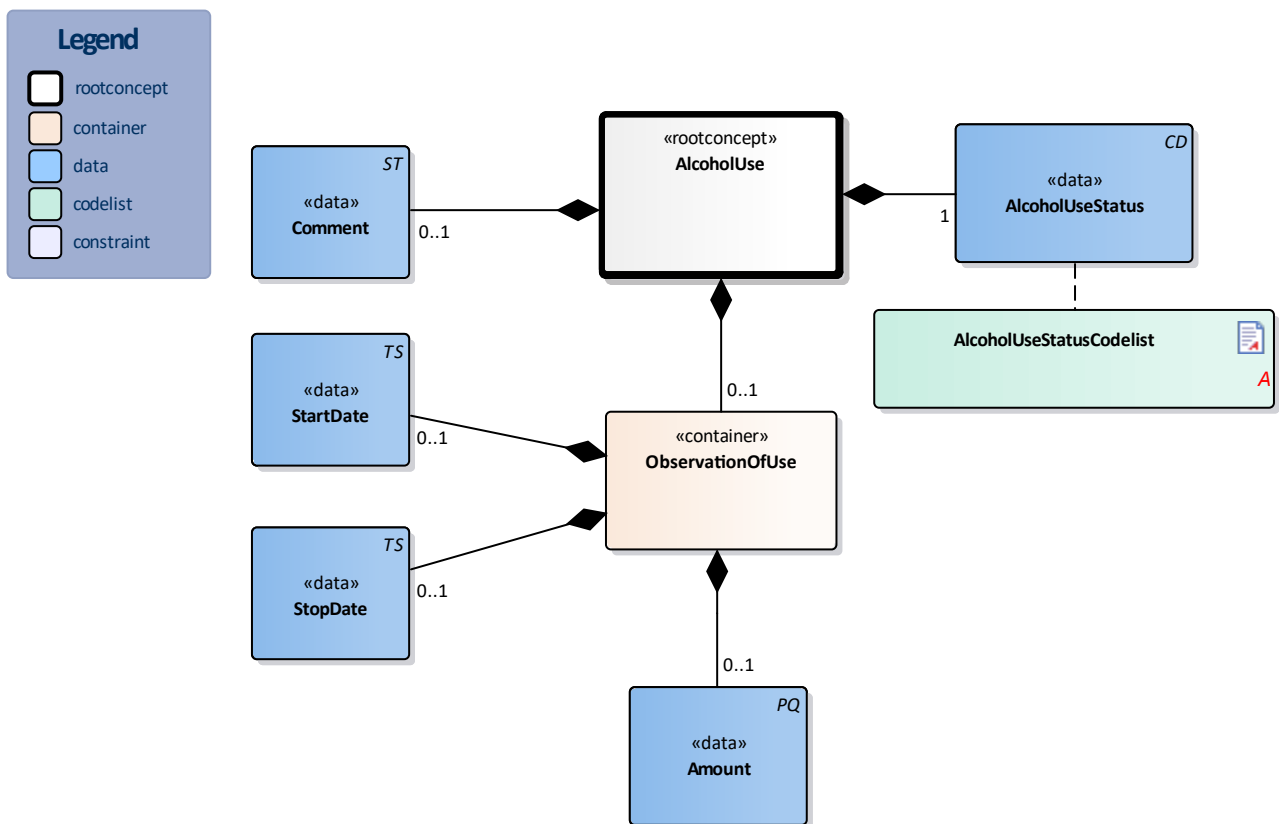
1.4 Purpose

During the social anamnesis, the patient is frequently asked about their alcohol consumption. Excessive (episodic) alcohol consumption may influence the current treatment and diagnostics. Alcohol-related problems are diagnosed as secondary diagnoses more and more often. Source: Guidelines - Multidisciplinary guidelines for Disorders in alcohol use (CBO, 2009)

1.5 Patient Population

1.6 Evidence Base

1.7 Information Model



«rootconcept»	AlcoholUse
Definitie	Root concept of the AlcoholUse information model. This concept contains all data elements of the AlcoholUse information model.
Datatype	
DCM::ConceptId	NL-CM:7.3.1
Opties	

«data»	Comment	
Definitie	Relevant comments on the alcohol consumption.	
Datatype	ST	
DCM::ConceptId	NL-CM:7.3.7	
DCM::DefinitionCode	LOINC: 48767-8 Annotation comment	
DCM::ExampleValue	consumptie alcohol alleen in het weekend	
Opties		

«data»	AlcoholUseStatus	
Definitie	The status of the patient's alcohol use.	
Datatype	CD	
DCM::ConceptId	NL-CM:7.3.2	
DCM::DefinitionCode	SNOMED CT: 228273003 Finding related to alcohol drinking behavior (finding)	
DCM::ExampleValue	Drinkt alcohol	
DCM::ValueSet	AlcoholUseStatusCodelist	OID: 2.16.840.1.113883.2.4.3.11.60.40.2.7.3.2
Opties		

«container»	ObservationOfUse	
Definitie	Container of the ObservationOfUse concept. This container contains all data elements of the observation of alcohol use.	
Datatype		
DCM::ConceptId	NL-CM:7.3.3	
Opties		

«data»	StartDate	
Definitie	The date on which the patient started using alcohol.	
Datatype	TS	
DCM::ConceptId	NL-CM:7.3.4	
DCM::ExampleValue	1975	
Opties		

«data»	StopDate	
Definitie	The date on which the patient stopped consuming alcohol.	
Datatype	TS	
DCM::ConceptId	NL-CM:7.3.5	
DCM::ExampleValue	28-02-2012	
Opties		

«data»	Amount	
Definitie	The extent of the patient's alcohol use in units of alcohol per time period.	
Datatype	PQ	
DCM::ConceptId	NL-CM:7.3.6	
DCM::DefinitionCode	SNOMED CT: 160573003 Alcohol intake (observable entity)	
DCM::ExampleValue	20/w	
Opties		

«document»	AlcoholUseStatusCodelist	
Definitie		
Datatype		
DCM::ValueSetBinding	Extensible	
DCM::ValueSetId	2.16.840.1.113883.2.4.3.11.60.40.2.7.3.2	
Opties		

AlcoholGebruikStatusCodelijst			OID: 2.16.840.1.113883.2.4.3.11.60.40.2.7.3.2	
Concept Name	Concept Code	Coding Syst. Name	Coding System OID	Description
Current drinker of alcohol (finding)	219006	SNOMED CT	2.16.840.1.113883.6.96	Drinkt alcohol
Current non-drinker of alcohol (finding)	105542008	SNOMED CT	2.16.840.1.113883.6.96	Niet-drinker
Ex-drinker (finding)	82581004	SNOMED CT	2.16.840.1.113883.6.96	Dronk vroeger alcohol
Lifetime non-drinker (finding)	228274009	SNOMED CT	2.16.840.1.113883.6.96	Levenslang niet drinker
Other	OTH	NullFlavor	2.16.840.1.113883.5.1008	Anders

	Legend
Definitie	
Datatype	
Opties	

1.8 Example Instances

AlcoholGebruikStatusCode	StartDatum	StopDatum	Hoeveelheid
Drinkt alcohol	1995		3 eenheden per dag

1.9 Instructions

If the exchange of information on past alcohol consumption is desired in the event that the patient has by now stopped or significantly reduced their alcohol intake, then this can be done by applying the information model a second time with an entered stop date, so that it is clear that the amount of units per day is the past amount.

If desired, the sender can include the type of alcohol used in the 'Comment' field.

1.10 Interpretation

1.11 Care Process

1.12 Example of the Instrument

1.13 Constraints

1.14 Issues

1.15 References

1.16 Functional Model

1.17 Traceability to other Standards

1.18 Disclaimer

The Health and Care Information Models (a.k.a Clinical Building Block) has been made in collaboration with several different parties in healthcare. These parties asked Nictiz to manage good maintenance and development of the information models. Hereafter, these parties and Nictiz are referred to as the collaborating parties. The collaborating parties paid utmost attention to the reliability and topicality of the data in these Health and Care Information Models. Omissions and inaccuracies may however occur. The collaborating parties are not liable for any damages resulting from omissions or inaccuracies in the information provided, nor are they liable for damages resulting from problems caused by or inherent to distributing information on the internet, such as malfunctions, interruptions, errors or delays in information or services provide by the parties to you or by you to the parties via a website or via e-mail, or any other digital means. The collaborating parties will also not accept liability for any damages resulting from the use of data, advice or ideas provided by or on behalf of the parties by means of the Health and Care Information Models. The parties will not accept any liability for the content of information in this Health and Care Information Model to which or from which a hyperlink is referred. In the event of contradictions in mentioned Health and Care Information Model documents and files, the most recent and highest version of the listed order in the revisions will indicate the priority of the documents in question. If information included in the digital version of a Health and Care Information Model is also distributed in writing, the written version will be leading in case of textual differences. This will apply if both have the same version number and date. A definitive version has priority over a draft version. A revised version has priority over previous versions.

1.19 Terms of Use

The user may use the Health and Care Information Models without limitations. The copyright provisions in the paragraph concerned apply to copying, distributing and passing on the Health and Care Information Models.

1.20 Copyrights

A Health and Care Information Model qualifies as a work within the meaning of Section 10 of the Copyright Act (Auteurswet). Copyrights protect the Health and Care Information Models and these rights are owned by the cooperating parties.

The user may copy, distribute and pass on the information in this Health and Care Information Model under the conditions that apply for Creative Commons license Attribution-NonCommercial-ShareAlike 3.0 Netherlands (CC BY-NC-SA-3.0).

The content is available under Creative Commons Attribution-NonCommercial-ShareAlike 3.0 (see also <http://creativecommons.org/licenses/by-nc-sa/3.0/nl/>)

This does not apply to information from third parties that sometimes is used and / or referred to in a Health and Care Information Model, for example to an international medical terminology system. Any (copyright) rights that protect this information are not owned by the cooperating parties but by those third parties.