

Health&Care Information Model: nl.zorg.Patient

Final

Managed by:

Better healthcare
through better IT



Content

1. nl.zorg.Patient-v3.0	3
1.1 Revision History.....	3
1.2 Concept	3
1.3 MindMap.....	3
1.4 Purpose.....	4
1.5 Patient Population	4
1.6 Evidence Base	4
1.7 Information Model	4
1.7.1 Naamgegevens.....	7
1.7.2 Adresgegevens.....	10
1.7.3 Contactgegevens	14
1.8 Example Instances.....	16
1.9 Instructions	17
1.10 Interpretation	17
1.11 Care Process	18
1.12 Example of the Instrument	18
1.13 Constraints.....	18
1.14 Issues	18
1.15 References	18
1.16 Functional Model	18
1.17 Traceability to other Standards.....	18
1.18 Disclaimer	18
1.19 Terms of Use	19
1.20 Copyrights	19

1. nl.zorg.Patient-v3.0

DCM::CoderList	Kerngroep Registratie aan de Bron
DCM::ContactInformation.Address	*
DCM::ContactInformation.Name	*
DCM::ContactInformation.Telecom	*
DCM::ContentAuthorList	Projectgroep Generieke Overdrachtsgegevens & Kerngroep Registratie aan de Bron
DCM::CreationDate	14-6-2012
DCM::DeprecatedDate	
DCM::DescriptionLanguage	nl
DCM::EndorsingAuthority.Address	
DCM::EndorsingAuthority.Name	PM
DCM::EndorsingAuthority.Telecom	
DCM::Id	2.16.840.1.113883.2.4.3.11.60.40.3.0.1
DCM::KeywordList	Patient, zorgverlener, contact
DCM::LifecycleStatus	Final
DCM::ModelerList	Kerngroep Registratie aan de Bron
DCM::Name	nl.zorg.Patient
DCM::PublicationDate	1-5-2016
DCM::PublicationStatus	Published
DCM::ReviewerList	Projectgroep Generieke Overdrachtsgegevens & Kerngroep Registratie aan de Bron
DCM::RevisionDate	22-5-2015
DCM::Superseeds	nl.nfu.Patient-v2.0.1
DCM::Version	3.0

1.1 Revision History

Publicatieversie 1.0 (15-02-2013)

-

Publicatieversie 1.1 (01-07-2013)

Bevat: ZIB-33.

Publicatieversie 2.0 (01-04-2015)

Bevat: ZIB-62, ZIB-67, ZIB-96, ZIB-97, ZIB-98, ZIB-99, ZIB-100, ZIB-102, ZIB-121, ZIB-257, ZIB-258, ZIB-259, ZIB-260, ZIB-261, ZIB-262, ZIB-303, ZIB-308, ZIB-349, ZIB-350, ZIB-351, ZIB-353.

Incl. algemene wijzigingsverzoeken:

ZIB-94, ZIB-154, ZIB-200, ZIB-201, ZIB-309, ZIB-324, ZIB-326.

Publicatieversie 2.0.1 (22-05-2015)

Bevat: ZIB-385, ZIB-374.

Publicatieversie 3.0 (01-05-2016)

Bevat: ZIB-453.

1.2 Concept

A person who receives medical care.

1.3 MindMap

1.4 Purpose

Recording relevant information to identify the patient for administrative purposes and process support.

1.5 Patient Population

1.6 Evidence Base

The name and address information is based on the information set of the Municipal Personal Records Database (GBA) and on the Dutch Implementation Guide: HL7v3 Basic Components.

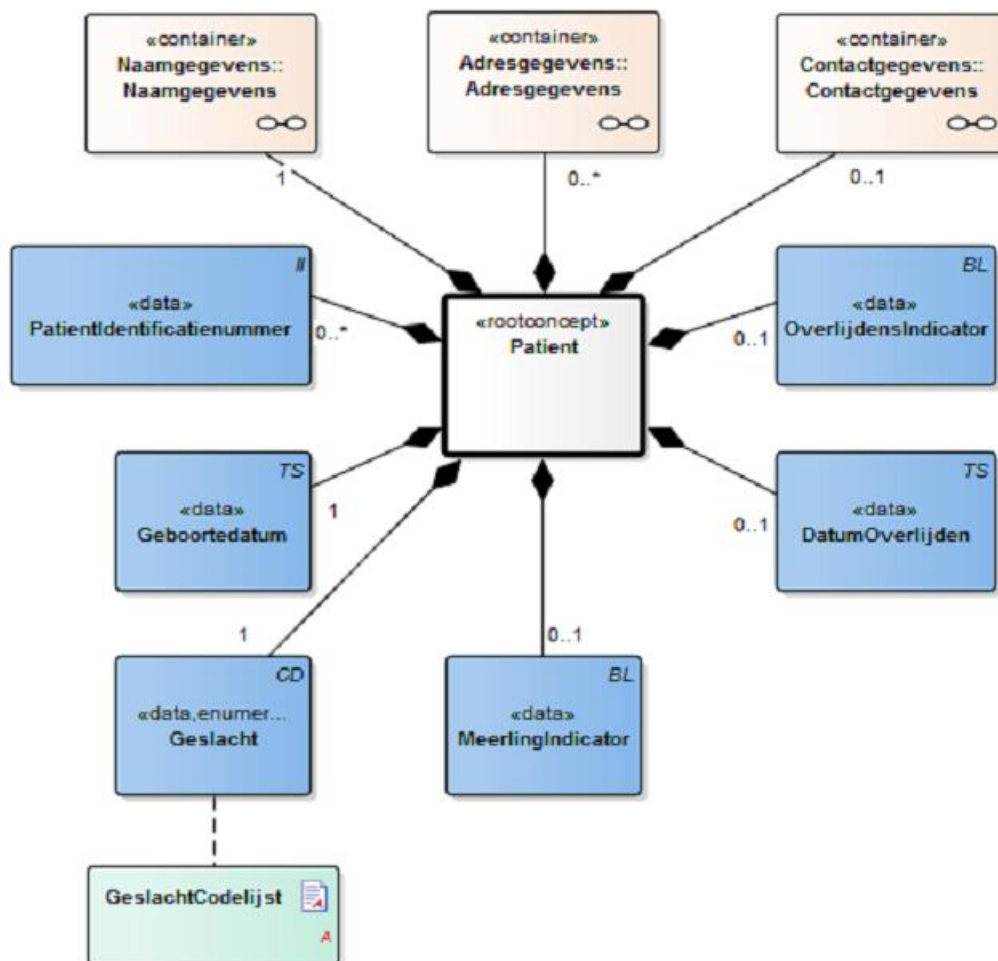
The information for the legally required verification of a social security number provided by the SBV-Z also follows GBA specifications.

Furthermore, the AZR (AWBZ-wide healthcare registration) data set used in AWBZ healthcare served as a base in determining the set.

Use of patient and personal details must follow the Personal Data Protection Act. This law prohibits processing non-essential personal data and mandates decent and reasonable processing of obtained personal data (Kohnstamm, 2006). Patient data recorded in (electronic) patient records or in digital messages must be handled in the context of the Personal Data Protection Act. Furthermore, healthcare centers must meet the Information Security NEN 7510 standard. Observance of the PDPA is monitored by the Dutch Data Protection Authority (CBP). The CBP and the Healthcare Inspectorate (IGZ) are jointly responsible for monitoring information security in healthcare (CBP, IGZ, 2008).

For those reasons, some personal data, seen in some countries as administrative data, are not included in this information model but in the information models for the Social Anamnesis.

1.7 Information Model



«rootconcept»	Patient
Alias	EN: Patient
Definition	Root concept of the Patient information model. This root concept contains all data elements of the Patient information model.
Datatype	
DCM::DefinitionCode	NL-CM:0.1.1
Options	

«data»	PatientIdentificatienummer
Alias	EN: PatientIdentificationNumber
Definition	The patient's identification number. In transfer situations, use of the social security number (BSN) must comply with the Use of Social Security Numbers in Healthcare Act (Wbsn-z). In other situations, other number systems can be used, such as internal hospital patient numbers for example.
Datatype	II
DCM::AssigningAuthority	Burgerservicenummer OID: 2.16.840.1.113883.2.4.6.3
DCM::DefinitionCode	NL-CM:0.1.7
DCM::ExampleValue	111222333
Options	

«data»	Geboortedatum	
Alias	EN: DateOfBirth	
Definition	Patient's date of birth. The date of birth is mandatory for a patient. A vague date (such as only the year) is permitted.	
Datatype	TS	
DCM::DefinitionCode	SNOMED CT: 184099003 Date of birth	
DCM::DefinitionCode	NL-CM:0.1.10	
DCM::ExampleValue	22-03-1999	
Options		

«data»	Geslacht	
Alias	EN: Gender	
Definition	Patient's administrative gender.	
Datatype	CD	
DCM::DefinitionCode	NL-CM:0.1.9	
DCM::DefinitionCode	SNOMED CT: 263495000 Gender	
DCM::ExampleValue	Female	
DCM::ValueSet	GeslachtCodelijst	OID: 2.16.840.1.113883.2.4.3.11.60.40.2.0.1.1
Options		

«data»	MeerlingIndicator	
Alias	EN: MultipleBirthIndicator	
Definition	An indication stating whether the patient is of a multiple birth.	
Datatype	BL	
DCM::DefinitionCode	NL-CM:0.1.31	
DCM::ExampleValue	Nee	
Options		

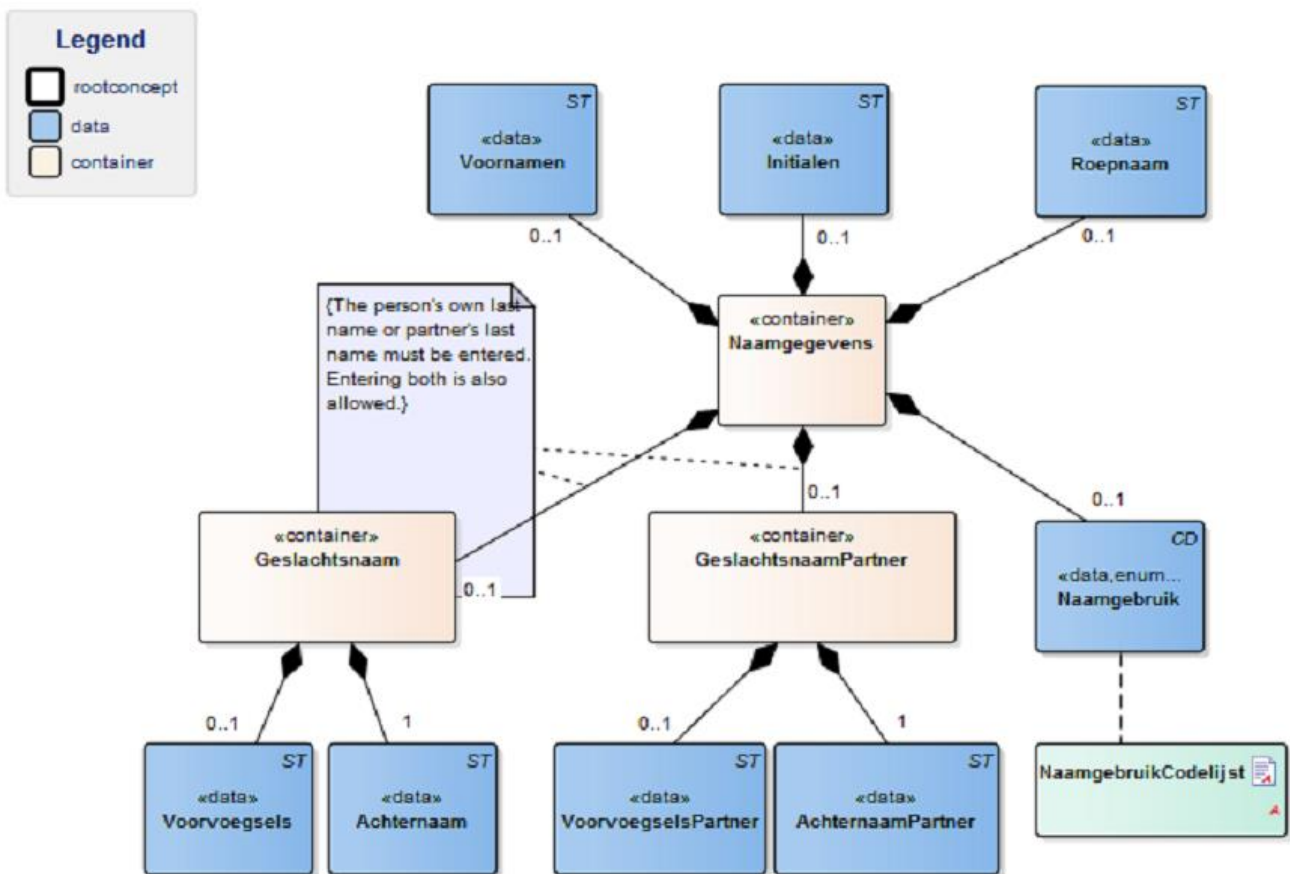
«data»	OverlijdensIndicator	
Alias	EN: DeathIndicator	
Definition	An indication stating whether the patient has died.	
Datatype	BL	
DCM::DefinitionCode	NL-CM:0.1.32	
DCM::ExampleValue	Nee	
Options		

«data»	DatumOverlijden	
Alias	EN: DateOfDeath	
Definition	The date on which the patient died. A 'vague' date, such as only the year, is permitted.	
Datatype	TS	
DCM::DefinitionCode	NL-CM:0.1.33	
Options		

«document»	GeslachtCodelijst	
Alias		

Definition				
Datatype				
Options				
GeslachtCodelijst		OID: 2.16.840.1.113883.2.4.3.11.60.40.2.0.1.1		
Concept Name	Concept Code	CodeSystem	CodeSystem OID	Description
Undifferentiated	UN	AdministrativeGender	2.16.840.1.113883.5.1	Ongedifferentieerd
Male	M	AdministrativeGender	2.16.840.1.113883.5.1	Man
Female	F	AdministrativeGender	2.16.840.1.113883.5.1	Vrouw
Unknown	UNK	NullFlavors	2.16.840.1.113883.5.1008	Onbekend

1.7.1 Naamgegevens



«container»	Naamgegevens	
Alias	EN: NameInformation	
Definition	Container of the NameInformation concept. This container contains all data elements of the NameInformation concept.	
Datatype		
DCM::DefinitionCode	NL-CM:0.1.6	
Options		

«data»	Voornamen	
Alias	EN: FirstNames	
Definition	The person's official first names.	
Datatype	ST	
DCM::DefinitionCode	NL-CM:0.1.26	
DCM::ExampleValue	Johanna Petronella Maria	
Options		

«data»	Initialen	
Alias	EN: Initials	
Definition	The person's initials.	
Datatype	ST	
DCM::DefinitionCode	NL-CM:0.1.35	
DCM::ExampleValue	J.P.M.	
Options		

«data»	Roepnaam	
Alias	EN: GivenName	
Definition	The name normally used to address the person.	
Datatype	ST	
DCM::DefinitionCode	NL-CM:0.1.27	
DCM::ExampleValue	Jo	
Options		

«data»	Naamgebruik	
Alias	EN: NameUsage	
Definition	This concept indicates the last name or order of last names with which the person is to be addressed.	
Datatype	CD	
DCM::DefinitionCode	NL-CM:0.1.34	
DCM::ExampleValue	Geslachtsnaam partner gevolgd door eigen geslachtsnaam	
DCM::ValueSet	NaamgebruikCodelijst	OID: 2.16.840.1.113883.2.4.3.11.60.40.2.0.1.6
Options		

«container»	Geslachtsnaam	
Alias	EN: LastName	
Definition	Container of the LastName concept. This container contains all data elements of the LastName concept.	
Datatype		
DCM::DefinitionCode	NL-CM:0.1.36	
Options		

«data»	Voorvoegsels	
Alias	EN: Prefix	
Definition	Prefix to the person's own last name.	

Datatype	ST	
DCM::DefinitionCode	NL-CM:0.1.38	
DCM::ExampleValue	van	
Options		

«data»	Achternaam	
Alias	EN: LastName	
Definition	Last name, given at birth.	
Datatype	ST	
DCM::DefinitionCode	NL-CM:0.1.24	
DCM::ExampleValue	Putten	
Options		

«container»	GeslachtsnaamPartner	
Alias	EN: LastNamePartner	
Definition	Container of the LastNamePartner concept. This container contains all data elements of the LastNamePartner concept.	
Datatype		
DCM::DefinitionCode	NL-CM:0.1.37	
Options		

«data»	VoorvoegselsPartner	
Alias	EN: PartnerPrefix	
Definition	Prefix to the partner's last name.	
Datatype	ST	
DCM::DefinitionCode	NL-CM:0.1.39	
DCM::ExampleValue	van der	
Options		

«data»	AchternaamPartner	
Alias	EN: PartnerLastName	
Definition	Partner's last name, given at birth.	
Datatype	ST	
DCM::DefinitionCode	NL-CM:0.1.25	
DCM::ExampleValue	Giessen	
Options		

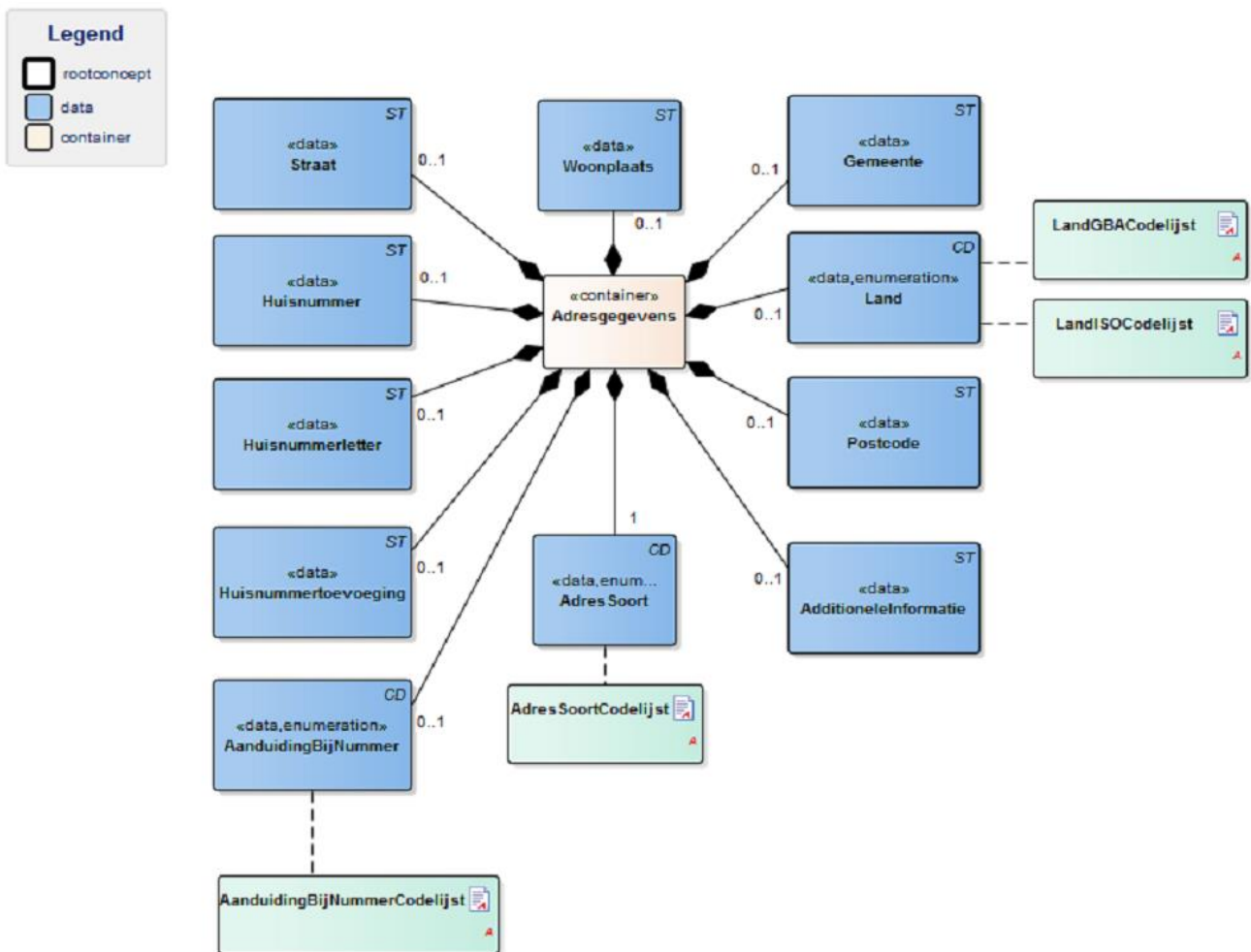
«document»	NaamgebruikCodelijst	
Alias		
Definition		
Datatype		
Options		

NaamgebruikCodelijst **OID: 2.16.840.1.113883.2.4.3.11.60.40.2.0.1.6**

Concept Name	Concept Code	CodeSystem	CodeSystem OID	Description
Eigen geslachtsnaam	NL1	NaamGebruik	2.16.840.1.113883.2.4.3.11.60.101.5.4	Eigen geslachtsnaam
Geslachtsnaam partner	NL2	NaamGebruik	2.16.840.1.113883.2.4.3.11.60.101.5.4	Geslachtsnaam partner

Geslachtsnaam partner gevolgd door eigen geslachtsnaam	NL3	NaamGebruik	2.16.840.1.113883.2.4.3.11.60.101.5.4	Geslachtsnaam partner gevolgd door eigen geslachtsnaam
Eigen geslachtsnaam gevolgd door geslachtsnaam partner	NL4	NaamGebruik	2.16.840.1.113883.2.4.3.11.60.101.5.4	Eigen geslachtsnaam gevolgd door geslachtsnaam partner
Unknown	UNK	NullFlavors	2.16.840.1.113883.5.1008	Onbekend

1.7.2 Adresgegevens



«container»	Adresgegevens	
Alias	EN: AddressInformation	
Definition	Container of the AddressInformation concept. This container contains all data elements of the AddressInformation concept.	
Datatype		
DCM::DefinitionCode	NL-CM:0.1.4	
Options		

«data»	Straat
---------------	---------------

Alias	EN: Street	
Definition	Street name of the address.	
Datatype	ST	
DCM::DefinitionCode	NL-CM:0.1.12	
DCM::ExampleValue	1e Jacob van Campenstr	
Options		

«data»	Huisnummer	
Alias	EN: HouseNumber	
Definition	House number of the address.	
Datatype	ST	
DCM::DefinitionCode	NL-CM:0.1.13	
DCM::ExampleValue	15	
Options		

«data»	Huisnummerletter	
Alias	EN: HouseNumberLetter	
Definition	A letter following the house number as assigned by the municipal authorities.	
Datatype	ST	
DCM::DefinitionCode	NL-CM:0.1.40	
DCM::ExampleValue	E	
Options		

«data»	Huisnummertoevoeging	
Alias	EN: HouseNumberAddition	
Definition	The letters or signs needed to locate the mailbox, in addition to the house number and letter.	
Datatype	ST	
DCM::DefinitionCode	NL-CM:0.1.41	
DCM::ExampleValue	Twee hoog achter	
DCM::ExampleValue	Rood	
Options		

«data»	AanduidingBijNummer	
Alias	EN: HouseNumberIndication	
Definition	The indication used for addresses which do not consist of the usual street name and house number.	
Datatype	CD	
DCM::DefinitionCode	NL-CM:0.1.42	
DCM::ValueSet	AanduidingBijNummerCodeli jst	OID: 2.16.840.1.113883.2.4.3.11.60.40.2.0.1.7
Options		

«data»	Postcode	
Alias	EN: Postcode	
Definition	Postcode of the address. In Dutch addresses, preferably use the postcode from the Postcode table (OID: 2.16.840.1.113883.2.4.4.15).	

Datatype	ST	
DCM::DefinitionCode	NL-CM:0.1.15	
DCM::ExampleValue	1012 NX	
Options		

«data»	Woonplaats	
Alias	EN: Place of residence	
Definition	A geographically determined area which forms part of the municipal area. For Dutch places of residence, preferably use the name from the GBA, table 33 (OID: 2.16.840.1.113883.2.4.6.14).	
Datatype	ST	
DCM::DefinitionCode	NL-CM:0.1.14	
DCM::ExampleValue	Hoogmade	
Options		

«data»	Gemeente	
Alias	EN: Municipality	
Definition	Municipality of residence. For Dutch municipalities, preferably use the name from the GBA, table 33 (OID: 2.16.840.1.113883.2.4.6.14).	
Datatype	ST	
DCM::DefinitionCode	NL-CM:0.1.16	
DCM::ExampleValue	Kaag en Braassem	
Options		

«data»	Land	
Alias	EN: Country	
Definition	Country in which the address is located.	
Datatype	CD	
DCM::DefinitionCode	NL-CM:0.1.17	
DCM::ExampleValue	Nederland	
DCM::ValueSet	LandGBACodelijst	OID: 2.16.840.1.113883.2.4.3.11.60.40.2.0.1.9
DCM::ValueSet	LandISOCodelijst	OID: 2.16.840.1.113883.2.4.3.11.60.40.2.0.1.8
Options		

«data»	AdditioneleInformatie	
Alias	EN: AdditionalInformation	
Definition	Extra information such as the building name, building number, entrance, route number.	
Datatype	ST	
DCM::DefinitionCode	NL-CM:0.1.28	
DCM::ExampleValue	Huis Zon en Licht	
Options		

«data»	AdresSoort	
Alias	EN: AddressType	
Definition	The type of address in question, such as a home address or mailing address.	

Datatype	CD	
DCM::DefinitionCode	NL-CM:0.1.11	
DCM::ExampleValue	Officieel adres	
DCM::ValueSet	AdresSoortCodelijst	OID: 2.16.840.1.113883.2.4.3.11.60.40.2.0.1.2
Options		

«document»	LandGBACodelijst	
Alias		
Definition		
Datatype		
Options		
LandGBACodelijst	OID: 2.16.840.1.113883.2.4.3.11.60.40.2.0.1.9	
Codes	Coding Syst. Name	Coding System OID
Alle waarden	GBA Tabel 34 (Landentabel)	2.16.840.1.113883.2.4.4.16.34

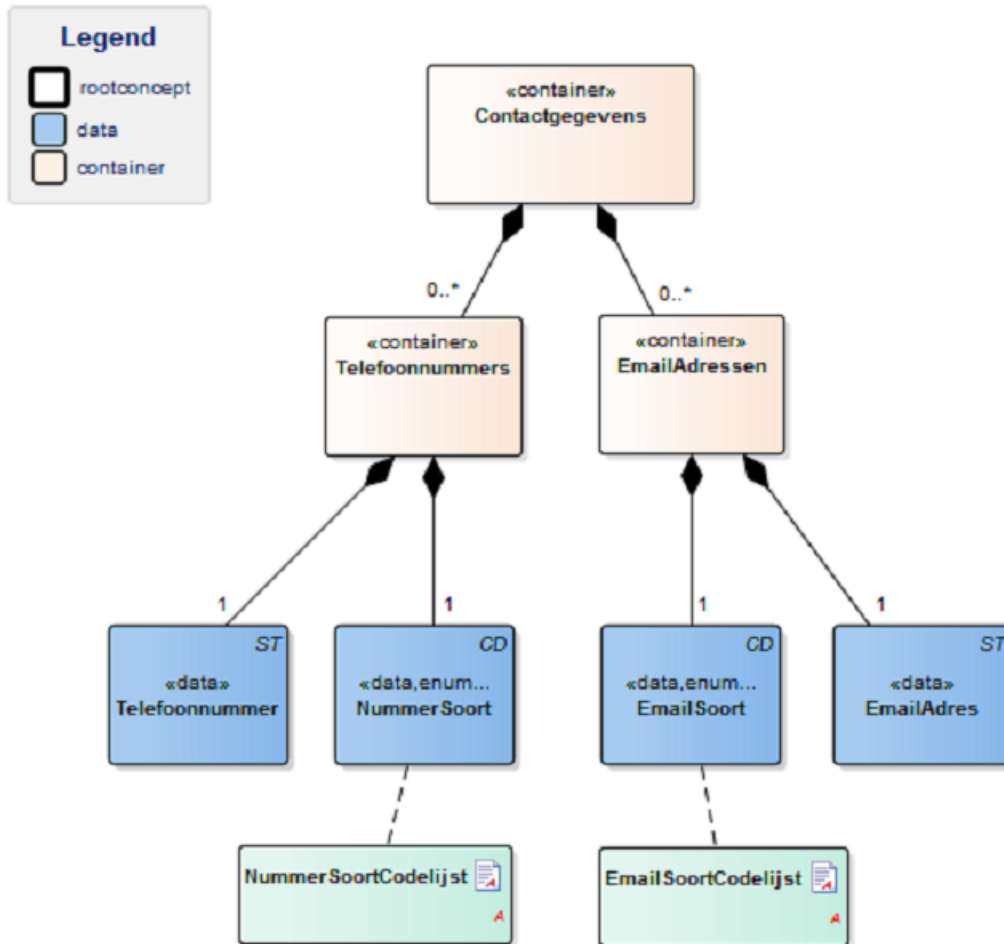
«document»	LandISOCodelijst	
Alias		
Definition		
Datatype		
Options		
LandISOCodelijst	OID: 2.16.840.1.113883.2.4.3.11.60.40.2.0.1.8	
Codes	Coding Syst. Name	Coding System OID
Alle waarden	ISO 3166-1 (alpha-2)	1.0.3166.1.2.2

«document»	AanduidingBijNummerCodelijst			
Alias				
Definition				
Datatype				
Options				
AanduidingBijNummerCodelijst	OID: 2.16.840.1.113883.2.4.3.11.60.40.2.0.1.7			
ConceptName	Code	Code System	Code System OID	Description
Tegenover	to	AanduidingBijHuisnummer	2.16.840.1.113883.2.4.3.11.60.101.5.3	Tegenover
Bij	by	AanduidingBijHuisnummer	2.16.840.1.113883.2.4.3.11.60.101.5.3	Bij

«document»	AdresSoortCodelijst			
Alias				
Definition				
Datatype				
Options				
AdresSoortCodelijst	OID: 2.16.840.1.113883.2.4.3.11.60.40.2.0.1.2			
ConceptName	Code	Code System	Code System OID	Description
Postal Adres	PST	AddressUse	2.16.840.1.113883.5.1119	Postadres

Primary Home	HP	AddressUse	2.16.840.1.113883.5.1119	Officieel adres
Visit Address	PHYS	AddressUse	2.16.840.1.113883.5.1119	Woon-/verblijfadres
Tempory Address	TMP	AddressUse	2.16.840.1.113883.5.1119	Tijdelijk adres
Work Place	WP	AddressUse	2.16.840.1.113883.5.1119	Werkadres
Vacation Home	HV	AddressUse	2.16.840.1.113883.5.1119	Vakantie adres

1.7.3 Contactgegevens



«container»	Contactgegevens
Alias	EN: ContactInformation
Definition	Container of the ContactInformation concept. This container contains all data elements of the ContactInformation concept.
Datatype	
DCM::DefinitionCode	NL-CM:0.1.5
Options	

«container»	Telefoonnummers
Alias	EN: TelephoneNumbers
Definition	Container of the TelephoneNumbers concept. This container contains all data elements of the TelephoneNumbers concept.
Datatype	
DCM::DefinitionCode	NL-CM:0.1.21
Options	

«data»	Telefoonnummer	
Alias	EN: TelephoneNumber	
Definition	The patient's telephone number.	
Datatype	ST	
DCM::DefinitionCode	NL-CM:0.1.23	
DCM::ExampleValue	+31612341234	
Options		

«data»	NummerSoort	
Alias	EN: NumberType	
Definition	NumberType indicates whether the number is a landline, temporary, work or mobile telephone number.	
Datatype	CD	
DCM::DefinitionCode	NL-CM:0.1.22	
DCM::ExampleValue	Mobiel telefoonnummer	
DCM::ValueSet	NummerSoortCodelijst	OID: 2.16.840.1.113883.2.4.3.11.60.40.2.0.1.3
Options		

«container»	EmailAdressen	
Alias	EN: E-mailAddresses	
Definition	Container of the E-mailAddresses concept. This container contains all data elements of the E-mailAddresses concept.	
Datatype		
DCM::DefinitionCode	NL-CM:0.1.18	
Options		

«data»	EmailAdres	
Alias	EN: E-mailAddress	
Definition	The patient's e-mail address	
Datatype	ST	
DCM::DefinitionCode	NL-CM:0.1.20	
Options		

«data»	EmailSoort	
Alias	EN: E-mailAddressType	
Definition	E-mailAddressType indicates whether it is a private or business e-mail address.	
Datatype	CD	
DCM::DefinitionCode	NL-CM:0.1.19	
DCM::ExampleValue	Zakelijk e-mailadres	
DCM::ValueSet	EmailSoortCodelijst	OID: 2.16.840.1.113883.2.4.3.11.60.40.2.0.1.4
Options		

«document»	NummerSoortCodelijst	
Alias		
Definition		

Datatype				
Options				
NummerSoortCodelijst			OID: 2.16.840.1.113883.2.4.3.11.60.40.2.0.1.3	
ConceptName	Code	Code System	Code System OID	Description
Primary Home	HP	AddressUse	2.16.840.1.113883.5.1119	Telefoonnummer thuis
Temporary Address	TMP	AddressUse	2.16.840.1.113883.5.1119	Tijdelijk telefoonnummer
Work Place	WP	AddressUse	2.16.840.1.113883.5.1119	Zakelijk telefoonnummer
Mobile Contact	MC	AddressUse	2.16.840.1.113883.5.1119	Mobiel telefoonnummer
Pager	PG	AddressUse	2.16.840.1.113883.5.1119	Pieper

«document»				
EmailSoortCodelijst				
Alias				
Definition				
Datatype				
Options				
EmailSoortCodelijst			OID: 2.16.840.1.113883.2.4.3.11.60.40.2.0.1.4	
ConceptName	Code	Code System	Code System OID	Description
Primary Home	HP	AddressUse	2.16.840.1.113883.5.1119	Privé e-mailadres
Work Place	WP	AddressUse	2.16.840.1.113883.5.1119	Zakelijk e-mailadres

1.8 Example Instances

Patiënt	
Naamgegevens	
PatiëntIdentificatienummer	111222333
Achternaam	Putten
Voorvoegsels	van
AchternaamPartner	Giessen
VoorvoegselsPartner	van der
Voornamen	Johanna Petronella Maria
Initialen	J.P.M.
Roepnaam	Jo
Geslacht	Vrouw
Geboortedatum	28-04-1934
MeerlingIndicator	Ja
OverlijdensIndicator	Nee
DatumOverlijden	
Adresgegevens*	
Straat	1e Jacob van Campenstr
Huisnummer	15
Woonplaats	Hoogmade
Gemeente	Kaag en Braassem
Postcode	1012 NX
AdresSoort	Woon-/verblijfadres
Land	Nederland
Adresgegevens*	
Straat	Stationsstraat
Huisnummer	11
Woonplaats	Alphen aan den Rijn
Gemeente	
Postcode	2406 AB
AdresSoort	Officieel adres
Land	
Telefoonnummers*	
Telefoonnummer	+31611234567
NummerSoort	Mobieltelefoonnummer
EmailAdressen*	
EmailAdres	giesput@myweb.nl
EmailSoort	Privé e-mailadres

* Meer dan één adres, telefoonnummer en email adres is mogelijk

1.9 Instructions

If both a name and an identification number are given, the name must match the name registered under that identification number, for verification purposes.

1.10 Interpretation

1.11 Care Process

1.12 Example of the Instrument

1.13 Constraints

1.14 Issues

1.15 References

1. DCM Patientgegevens V0.91. [Online] Beschikbaar op: http://www.nictiz.nl/uploaded/FILES/htmlcontent/dcm/Nictiz/DCMPatientgegevens_V_0.91loNL.pdf [Geraadpleegd: 23 februari 2015].
2. Implementatiehandleiding HL7v3 Basiscomponenten, Stichting HL7 Nederland [Online] Beschikbaar op: http://www.hl7.nl/images/downloads/Implementatiehandleiding%20HL7v3%20Basiscomponenten%20%202.3NL_secure.pdf [Geraadpleegd: 23 februari 2015].

1.16 Functional Model

1.17 Traceability to other Standards

1.18 Disclaimer

This Health and Care Information Model (a.k.a Clinical Building Block) has been made in collaboration with several different parties in healthcare. These parties asked Nictiz to manage good maintenance and development of the information models. Hereafter, these parties and Nictiz are referred to as the collaborating parties. The collaborating parties paid utmost attention to the reliability and topicality of the data in these Health and Care Information Models. Omissions and inaccuracies may however occur. The collaborating parties are not liable for any damages resulting from omissions or inaccuracies in the information provided, nor are they liable for damages resulting from problems caused by or inherent to distributing information on the internet, such as malfunctions, interruptions, errors or delays in information or services provide by the parties to you or by you to the parties via a website or via e-mail, or any other digital means. The collaborating parties will also not accept liability for any damages resulting from the use of data, advice or ideas provided by or on behalf of the parties by means of this Health and Care Information Model. The parties will not accept any liability for the content of information in this Health and Care Information Model to which or from which a hyperlink is referred. In the event of contradictions in mentioned Health and Care Information Model documents and files, the most recent and highest version of the listed order in the revisions will indicate the priority of the documents in question. If information included in the digital version of this Health and Care Information Model is also distributed in writing, the written version will be leading in case of textual differences. This will apply if both have the same version number and date. A definitive version has priority over a draft version. A revised version has priority over previous versions.

1.19 Terms of Use

The user may use the information in this Health and Care Information Model without limitations. The copyright provisions in the paragraph concerned apply to copying, distributing and passing on information from this Health and Care Information Model.

1.20 Copyrights

The user may copy, distribute and pass on the information in this Health and Care Information Model under the conditions that apply for Creative Commons license Attribution-NonCommercial-ShareAlike 3.0 Netherlands (CC BY-NC-SA-3.0). The content is available under Creative Commons Attribution-NonCommercial-ShareAlike 3.0 (see also <http://creativecommons.org/licenses/by-nc-sa/3.0/nl/>)