

Health & Care Information Mod nl.zorg.TNMTumorClassification-v1

Status: Final

Release: 2020

Release status: Published

Managed by:



Content

| | |
|---|----------|
| 1. nl.zorg.TNMTumorClassification-v1.0 | 3 |
| 1.1 Revision History | 3 |
| 1.2 Concept | 3 |
| 1.3 Mindmap | 3 |
| 1.4 Purpose | 3 |
| 1.5 Patient Population | 4 |
| 1.6 Evidence Base | 4 |
| 1.7 Information Model | 4 |
| 1.7.1 PrimaryTumor | 11 |
| 1.7.2 RegionalLymphnodes | 24 |
| 1.7.3 DistantMetastasis | 41 |
| 1.8 Example Instances | 46 |
| 1.9 Instructions | 47 |
| 1.10 Interpretation | 49 |
| 1.11 Care Process | 49 |
| 1.12 Example of the Instrument | 49 |
| 1.13 Constraints | 49 |
| 1.14 Issues | 49 |
| 1.15 References | 49 |
| 1.16 Functional Model | 49 |
| 1.17 Traceability to other Standards | 49 |
| 1.18 Disclaimer | 49 |
| 1.19 Terms of Use | 50 |
| 1.20 Copyrights | 50 |

1. nl.zorg.TNMTumorClassification-v1.0

| | |
|---------------------------------|---|
| DCM::CoderList | * |
| DCM::ContactInformation.Address | * |
| DCM::ContactInformation.Name | * |
| DCM::ContactInformation.Telecom | * |
| DCM::ContentAuthorList | * |
| DCM::CreationDate | 15/05/2020 |
| DCM::DeprecatedDate | |
| DCM::DescriptionLanguage | nl |
| DCM::EndorsingAuthority.Address | |
| DCM::EndorsingAuthority.Name | * |
| DCM::EndorsingAuthority.Telecom | |
| DCM::Id | 2.16.840.1.113883.2.4.3.11.60.40.3.4.27 |
| DCM::KeywordList | |
| DCM::LifecycleStatus | Final |
| DCM::ModelerList | * |
| DCM::Name | nl.zorg.TNMTumorClassificatie |
| DCM::PublicationDate | 01-09-2020 |
| DCM::PublicationStatus | Published |
| DCM::ReviewerList | |
| DCM::RevisionDate | |
| DCM::Supersedes | * |
| DCM::Version | 1.0 |
| HCIM::PublicationLanguage | EN |

1.1 Revision History

Publicatieversie 1.0 (01-09-2020)

1.2 Concept

TNM Classification of Malignant Tumors (TNM) is the cancer staging system developed and is used by the Union for International Cancer Control (UICC). It is also used by the American Joint Committee on Cancer (AJCC) and the International Federation of Gynecology and Obstetrics (FIGO). In 1987, the UICC and AJCC staging systems were unified into the single TNM staging system. Nevertheless, there are still some differences between the two systems.

The TNM-classification is developed for solid tumors. TNM is a notation system that describes the extent of cancer, which originates from a solid tumor, using alphanumeric codes; T describes the size of the (primary) tumor and whether it has invaded nearby tissue, N describes nearby (regional) lymph nodes that are involved, and M describes distant metastasis (spread of cancer from one part of the body to another). In addition to T, N and M, the classification also contains other parameters that may be relevant.

1.3 Mindmap

The objectives of the TNM classification are the following:

- Aid treatment planning,
- Provide an indication of prognosis based on historical outcome data,
- Assist in the evaluation of treatment results,
- Facilitate the exchange of information between treatment centers,
- Contribute to continuing investigations of human malignancies,
- Support cancer control activities, including through cancer registries.

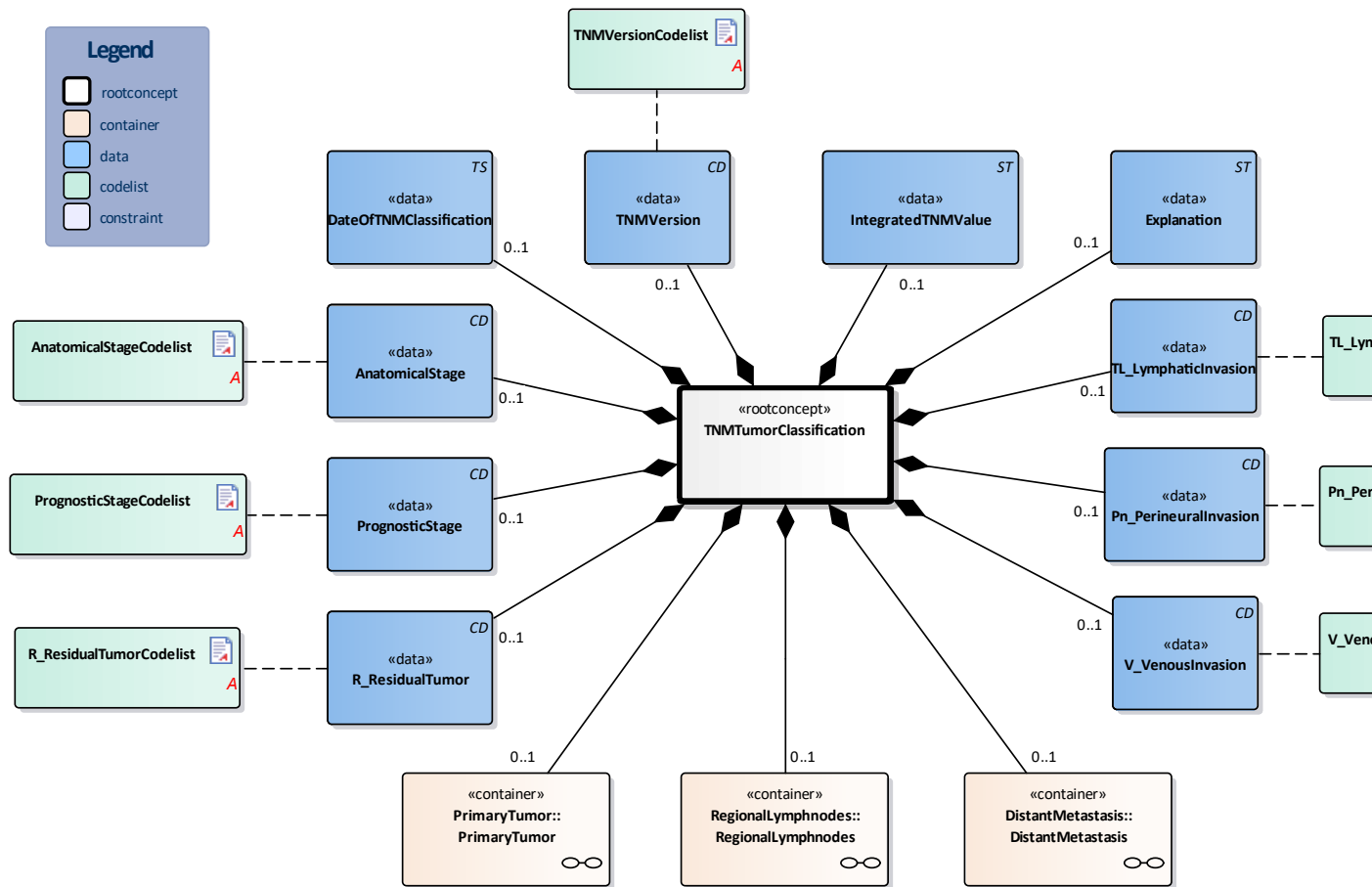
The TNM classification is a unified standard. It goes beyond clinician practice and constitutes vital information for policy-makers developing or implementing cancer control and prevention plans.

1.5 Patient Population

Adult patients with a solid tumor on which the TNM-classifications can be applied.

1.6 Evidence Base

1.7 Information Model



| «rootconcept» | TNMTumorClassification |
|------------------|---|
| Definitie | Root concept of the TNMTumorClassification information model. This root concept contains all data elements of the TNMTumorClassification information model. |

| | | |
|----------------------------|----------------------|--|
| Datatype | TS | |
| DCM::ConceptId | NL-CM:4.27.2 | |
| DCM::DefinitionCode | SNOMED CT: 399651003 | |
| | Date of report | |
| DCM::ExampleValue | 07-06-2020 | |
| Opties | | |

| | | |
|----------------------------|---|---|
| «data» | TNMVersion | |
| Definitie | TNM classification version (AJCC or UICC) and edition used (7th, 8th et | |
| Datatype | CD | |
| DCM::ConceptId | NL-CM:4.27.3 | |
| DCM::DefinitionCode | SNOMED CT: 273249006 | |
| | Assessment scales | |
| DCM::ExampleValue | AJCC 8th | |
| DCM::ValueSet | TNMVersionCodelist | OID: 2.16.840.1.113883.2.4.3.11.60.40.2.4.27 |
| Opties | | |

| | | |
|----------------------------|---|--|
| «data» | IntegratedTNMValue | |
| Definitie | The assigned TNM classification (the value), based on each T, N and M category (optional incl. multiple primary tumors (m) and/or the localization of M). | |
| Datatype | ST | |
| DCM::ConceptId | NL-CM:4.27.4 | |
| DCM::DefinitionCode | SNOMED CT: 399703000 | |
| | Integrated TNM category | |
| DCM::ExampleValue | pT1N0M0 | |
| Opties | | |

| | | |
|----------------------------|---|--|
| «data» | Explanation | |
| Definitie | Remark regarding interpretation of the integrated TNM value as is classified. | |
| Datatype | ST | |
| DCM::ConceptId | NL-CM:4.27.5 | |
| DCM::DefinitionCode | SNOMED CT: 243814003 | |
| | Interpretation of findings | |
| DCM::ExampleValue | hoger stadium vanwege positieve lymfeklieren pelvis | |
| Opties | | |

| | | |
|-----------------------|---|--|
| «data» | TL_LymphaticInvasion | |
| Definitie | Presence or absence of tissue invasion absence of lymphatic invasion, t L-category. It concerns an additional description within the TNM classification that is determined by a pathologist. | |
| Datatype | CD | |
| DCM::ConceptId | NL-CM:4.27.6 | |

| | | |
|----------------------------|---|---|
| Definitie | Presence or absence of perineural invasion, the Pn-category. It concerns an additional description within the TNM classification that is determined by the pathologist. | |
| Datatype | CD | |
| DCM::ConceptId | NL-CM:4.27.7 | |
| DCM::DefinitionCode | SNOMED CT: 371513001 Status of perineural invasion by tumor | |
| DCM::ValueSet | Pn_PerineuralInvasionCodeList | OID: 2.16.840.1.113883.2.4.3.11.60.40.2.4.27 |
| Opties | | |

| | | |
|----------------------------|--|---|
| «data» | V_VenousInvasion | |
| Definitie | Presence or absence of venous invasion, the V-category. It concerns an additional description within the TNM classification that is determined by the pathologist. | |
| Datatype | CD | |
| DCM::ConceptId | NL-CM:4.27.8 | |
| DCM::DefinitionCode | SNOMED CT: 371493002 Status of venous (large vessel) invasion by tumor | |
| DCM::ValueSet | V_VenousInvasionCodeList | OID: 2.16.840.1.113883.2.4.3.11.60.40.2.4.27 |
| Opties | | |

| | | |
|----------------------------|---|---|
| «data» | AnatomicalStage | |
| Definitie | The stage of the disease is the grouping based on the anatomical extent of the disease. | |
| Datatype | CD | |
| DCM::ConceptId | NL-CM:4.27.9 | |
| DCM::DefinitionCode | SNOMED CT: 399390009 TNM stage grouping | |
| DCM::ValueSet | AnatomicalStageCodeList | OID: 2.16.840.1.113883.2.4.3.11.60.40.2.4.27 |
| Opties | | |

| | | |
|----------------------------|---|---|
| «data» | PrognosticStage | |
| Definitie | The Prognostic Stage group of the disease. Next to the anatomic extent of the disease additional prognostic factors are included in the grouping. | |
| Datatype | CD | |
| DCM::ConceptId | NL-CM:4.27.10 | |
| DCM::DefinitionCode | SNOMED CT: 399390009 TNM stage grouping | |
| DCM::ValueSet | PrognosticStageCodeList | OID: 2.16.840.1.113883.2.4.3.11.60.40.2.4.27 |
| Opties | | |

| | |
|---------------|--|
| Opties | |
|---------------|--|

| | | |
|-----------------------------|---|--|
| «document» | AnatomicalStageCodelist | |
| Definitie | | |
| Datatype | | |
| DCM::ValueSetBinding | Extensible | |
| DCM::ValueSetId | 2.16.840.1.113883.2.4.3.11.60.40.2.4.27.1 | |
| Opties | | |

| | |
|-----------------------------------|---|
| AnatomischStadiumCodelijst | OID: 2.16.840.1.113883.2.4.3.11.60.40.2.4.27.1 |
|-----------------------------------|---|

| Concept Name | Concept Code | Coding System Name | Coding System OID | Description |
|---------------------|---------------------|---------------------------|---|--------------------|
| Stadium 0 | Stage0 | AnatomischStadium | 2.16.840.1.113883.2.4.3.11.60.40.4.10.6 | Stadium 0 |
| Stadium I | Stagel | AnatomischStadium | 2.16.840.1.113883.2.4.3.11.60.40.4.10.6 | Stadium I |
| Stadium IA | StagelA | AnatomischStadium | 2.16.840.1.113883.2.4.3.11.60.40.4.10.6 | Stadium IA |
| Stadium IA1 | StagelA1 | AnatomischStadium | 2.16.840.1.113883.2.4.3.11.60.40.4.10.6 | Stadium IA1 |
| Stadium IA2 | StagelA2 | AnatomischStadium | 2.16.840.1.113883.2.4.3.11.60.40.4.10.6 | Stadium IA2 |
| Stadium IA3 | StagelA3 | AnatomischStadium | 2.16.840.1.113883.2.4.3.11.60.40.4.10.6 | Stadium IA3 |
| Stadium IC | StagelC | AnatomischStadium | 2.16.840.1.113883.2.4.3.11.60.40.4.10.6 | Stadium IC |
| Stadium IB | StagelB | AnatomischStadium | 2.16.840.1.113883.2.4.3.11.60.40.4.10.6 | Stadium IB |
| Stadium IB1 | StagelB1 | AnatomischStadium | 2.16.840.1.113883.2.4.3.11.60.40.4.10.6 | Stadium IB1 |
| Stadium IB2 | StagelB2 | AnatomischStadium | 2.16.840.1.113883.2.4.3.11.60.40.4.10.6 | Stadium IB2 |
| Stadium IS | Stagels | AnatomischStadium | 2.16.840.1.113883.2.4.3.11.60.40.4.10.6 | Stadium IS |
| Stadium II | Stagell | AnatomischStadium | 2.16.840.1.113883.2.4.3.11.60.40.4.10.6 | Stadium II |
| Stadium IIA | StagellA | AnatomischStadium | 2.16.840.1.113883.2.4.3.11.60.40.4.10.6 | Stadium IIA |
| Stadium IIA1 | StagellA1 | AnatomischStadium | 2.16.840.1.113883.2.4.3.11.60.40.4.10.6 | Stadium IIA1 |
| Stadium IIA2 | StagellA2 | AnatomischStadium | 2.16.840.1.113883.2.4.3.11.60.40.4.10.6 | Stadium IIA2 |
| Stadium IIB | StagellB | AnatomischStadium | 2.16.840.1.113883.2.4.3.11.60.40.4.10.6 | Stadium IIB |
| Stadium IIC | StagellC | AnatomischStadium | 2.16.840.1.113883.2.4.3.11.60.40.4.10.6 | Stadium IIC |
| Stadium III | Stagelll | AnatomischStadium | 2.16.840.1.113883.2.4.3.11.60.40.4.10.6 | Stadium III |
| Stadium IIIA | StagelllA | AnatomischStadium | 2.16.840.1.113883.2.4.3.11.60.40.4.10.6 | Stadium IIIA |
| Stadium IIIA1 | StagelllA1 | AnatomischStadium | 2.16.840.1.113883.2.4.3.11.60.40.4.10.6 | Stadium IIIA1 |

| | | | | |
|--------------|-----------|-------------------|---|--------------|
| Stadium IIID | StageIIID | AnatomischStadium | 2.16.840.1.113883.2.4.3.11.60.40.4.10.6 | Stadium IIID |
| Stadium IV | StageIV | AnatomischStadium | 2.16.840.1.113883.2.4.3.11.60.40.4.10.6 | Stadium IV |
| Stadium IVA | StageIVA | AnatomischStadium | 2.16.840.1.113883.2.4.3.11.60.40.4.10.6 | Stadium IVA |
| Stadium IVB | StageIVB | AnatomischStadium | 2.16.840.1.113883.2.4.3.11.60.40.4.10.6 | Stadium IVB |
| Stadium IVC | StageIVC | AnatomischStadium | 2.16.840.1.113883.2.4.3.11.60.40.4.10.6 | Stadium IVC |

| «document» | | Pn_PerineuralInvasionCodelist | | |
|----------------------|--|---|--|--|
| Definitie | | | | |
| Datatype | | | | |
| DCM::ValueSetBinding | | Extensible | | |
| DCM::ValueSetId | | 2.16.840.1.113883.2.4.3.11.60.40.2.4.27.3 | | |
| Opties | | | | |

| Pn_PerineuraleInvasieCodelijst | | | OID: 2.16.840.1.113883.2.4.3.11.60.40.2.4.27.3 | |
|--------------------------------|--------------|-----------------------|--|--|
| Concept Name | Concept Code | Coding System Name | Coding System OID | Description |
| PnX | PnX | Pn_PerineuraleInvasie | 2.16.840.1.113883.2.4.3.11.60.40.5.1.3 | Aanwezigheid van Perineurale invasie k niet beoordeeld wor |
| Pn0 | Pn0 | Pn_PerineuraleInvasie | 2.16.840.1.113883.2.4.3.11.60.40.5.1.3 | Geen Perineurale invasie |
| Pn1 | Pn1 | Pn_PerineuraleInvasie | 2.16.840.1.113883.2.4.3.11.60.40.5.1.3 | Perineurale invasie |

| «document» | | PrognosticStageCodelist | | |
|----------------------|--|---|--|--|
| Definitie | | | | |
| Datatype | | | | |
| DCM::ValueSetBinding | | Extensible | | |
| DCM::ValueSetId | | 2.16.840.1.113883.2.4.3.11.60.40.2.4.27.4 | | |
| Opties | | | | |

| PrognostischStadiumCodelijst | | | OID: 2.16.840.1.113883.2.4.3.11.60.40.2.4.27.4 | |
|------------------------------|--------------|---------------------|--|-------------|
| Concept Name | Concept Code | Coding System Name | Coding System OID | Description |
| Stadium 0 | Stage0 | PrognostischStadium | 2.16.840.1.113883.2.4.3.11.60.40.4.10.7 | Stadium |

| | | | | |
|---------------|------------|---------------------|---|---------------|
| Stadium IC | StageIC | PrognostischStadium | 2.16.840.1.113883.2.4.3.11.60.40.4.10.7 | Stadium IC |
| Stadium IB | StageIB | PrognostischStadium | 2.16.840.1.113883.2.4.3.11.60.40.4.10.7 | Stadium IB |
| Stadium IB1 | StageIB1 | PrognostischStadium | 2.16.840.1.113883.2.4.3.11.60.40.4.10.7 | Stadium IB1 |
| Stadium IB2 | StageIB2 | PrognostischStadium | 2.16.840.1.113883.2.4.3.11.60.40.4.10.7 | Stadium IB2 |
| Stadium IS | StageIS | PrognostischStadium | 2.16.840.1.113883.2.4.3.11.60.40.4.10.7 | Stadium IS |
| Stadium II | StageII | PrognostischStadium | 2.16.840.1.113883.2.4.3.11.60.40.4.10.7 | Stadium II |
| Stadium IIA | StageIIA | PrognostischStadium | 2.16.840.1.113883.2.4.3.11.60.40.4.10.7 | Stadium IIA |
| Stadium IIA1 | StageIIA1 | PrognostischStadium | 2.16.840.1.113883.2.4.3.11.60.40.4.10.7 | Stadium IIA1 |
| Stadium IIA2 | StageIIA2 | PrognostischStadium | 2.16.840.1.113883.2.4.3.11.60.40.4.10.7 | Stadium IIA2 |
| Stadium IIB | StageIIB | PrognostischStadium | 2.16.840.1.113883.2.4.3.11.60.40.4.10.7 | Stadium IIB |
| Stadium IIC | StageIIC | PrognostischStadium | 2.16.840.1.113883.2.4.3.11.60.40.4.10.7 | Stadium IIC |
| Stadium III | StageIII | PrognostischStadium | 2.16.840.1.113883.2.4.3.11.60.40.4.10.7 | Stadium III |
| Stadium IIIA | StageIIIA | PrognostischStadium | 2.16.840.1.113883.2.4.3.11.60.40.4.10.7 | Stadium IIIA |
| Stadium IIIA1 | StageIIIA1 | PrognostischStadium | 2.16.840.1.113883.2.4.3.11.60.40.4.10.7 | Stadium IIIA1 |
| Stadium IIIA2 | StageIIIA2 | PrognostischStadium | 2.16.840.1.113883.2.4.3.11.60.40.4.10.7 | Stadium IIIA2 |
| Stadium IIIB | StageIIIB | PrognostischStadium | 2.16.840.1.113883.2.4.3.11.60.40.4.10.7 | Stadium IIIB |
| Stadium IIIC | StageIIIC | PrognostischStadium | 2.16.840.1.113883.2.4.3.11.60.40.4.10.7 | Stadium IIIC |
| Stadium IIIC1 | StageIIIC1 | PrognostischStadium | 2.16.840.1.113883.2.4.3.11.60.40.4.10.7 | Stadium IIIC1 |
| Stadium IIIC2 | StageIIIC2 | PrognostischStadium | 2.16.840.1.113883.2.4.3.11.60.40.4.10.7 | Stadium IIIC2 |
| Stadium IIID | StageIIID | PrognostischStadium | 2.16.840.1.113883.2.4.3.11.60.40.4.10.7 | Stadium IIID |
| Stadium IV | StageIV | PrognostischStadium | 2.16.840.1.113883.2.4.3.11.60.40.4.10.7 | Stadium IV |
| Stadium IVA | StageIVA | PrognostischStadium | 2.16.840.1.113883.2.4.3.11.60.40.4.10.7 | Stadium IVA |
| Stadium IVB | StageIVB | PrognostischStadium | 2.16.840.1.113883.2.4.3.11.60.40.4.10.7 | Stadium IVB |
| Stadium IVC | StageIVC | PrognostischStadium | 2.16.840.1.113883.2.4.3.11.60.40.4.10.7 | Stadium IVC |

| | | | |
|-----------------------------|--------------------------------|--|--|
| «document» | R_ResidualTumorCodelist | | |
| Definitie | | | |
| Datatype | | | |
| DCM::ValueSetBinding | Extensible | | |

| | | | | |
|----|----|------------------|---|--------------------------------|
| | | | | niet beoordeeld wor |
| R0 | R0 | R_ResidueleTumor | 2.16.840.1.113883.2.4.3.11.60.40.4.10.4 | Geen residuele tumor |
| R1 | R1 | R_ResidueleTumor | 2.16.840.1.113883.2.4.3.11.60.40.4.10.4 | Microscopische residuele tumor |
| R2 | R2 | R_ResidueleTumor | 2.16.840.1.113883.2.4.3.11.60.40.4.10.4 | Macroscopische residuele tumor |

| «document» | | TL_LymphaticInvasionCodelist | | |
|----------------------|--|---|--|--|
| Definitie | | | | |
| Datatype | | | | |
| DCM::ValueSetBinding | | Extensible | | |
| DCM::ValueSetId | | 2.16.840.1.113883.2.4.3.11.60.40.2.4.27.2 | | |
| Opties | | | | |

| L_LymfatischeInvasieCodelijst | | | | OID: 2.16.840.1.113883.2.4.3.11.60.40.2.4.27.2 |
|-------------------------------|--------------|----------------------|---|---|
| Concept Name | Concept Code | Coding System Name | Coding System OID | Description |
| LX | LX | L_LymfatischeInvasie | 2.16.840.1.113883.2.4.3.11.60.40.4.10.9 | Aanwezigheid van Lymfatische invasie kan niet beoordeeld worden |
| L0 | L0 | L_LymfatischeInvasie | 2.16.840.1.113883.2.4.3.11.60.40.4.10.9 | Geen Lymfatische invasie |
| L1 | L1 | L_LymfatischeInvasie | 2.16.840.1.113883.2.4.3.11.60.40.4.10.9 | Lymfatische invasie |

| «document» | | TNMVersionCodelist | | |
|----------------------|--|---|--|--|
| Definitie | | | | |
| Datatype | | | | |
| DCM::ValueSetBinding | | Extensible | | |
| DCM::ValueSetId | | 2.16.840.1.113883.2.4.3.11.60.40.2.4.27.6 | | |
| Opties | | | | |

| TNMVersieCodelijst | | | | OID: 2.16.840.1.113883.2.4.3.11.60.40.2.4.27.2 |
|--------------------|--------------|--------------------|---|--|
| Concept Name | Concept Code | Coding System Name | Coding System OID | Description |
| AJCC 1ste editie | AJCCTNM1 | TNMVersie | 2.16.840.1.113883.2.4.3.11.60.40.4.10.8 | AJCC TNM 1ste editie |
| AJCC 2e editie | AJCCTNM2 | TNMVersie | 2.16.840.1.113883.2.4.3.11.60.40.4.10.8 | AJCC TNM 2e editie |
| AJCC 3e editie | AJCCTNM3 | TNMVersie | 2.16.840.1.113883.2.4.3.11.60.40.4.10.8 | AJCC TNM 3e editie |
| AJCC 4e editie | AJCCTNM4 | TNMVersie | 2.16.840.1.113883.2.4.3.11.60.40.4.10.8 | AJCC TNM 4e editie |

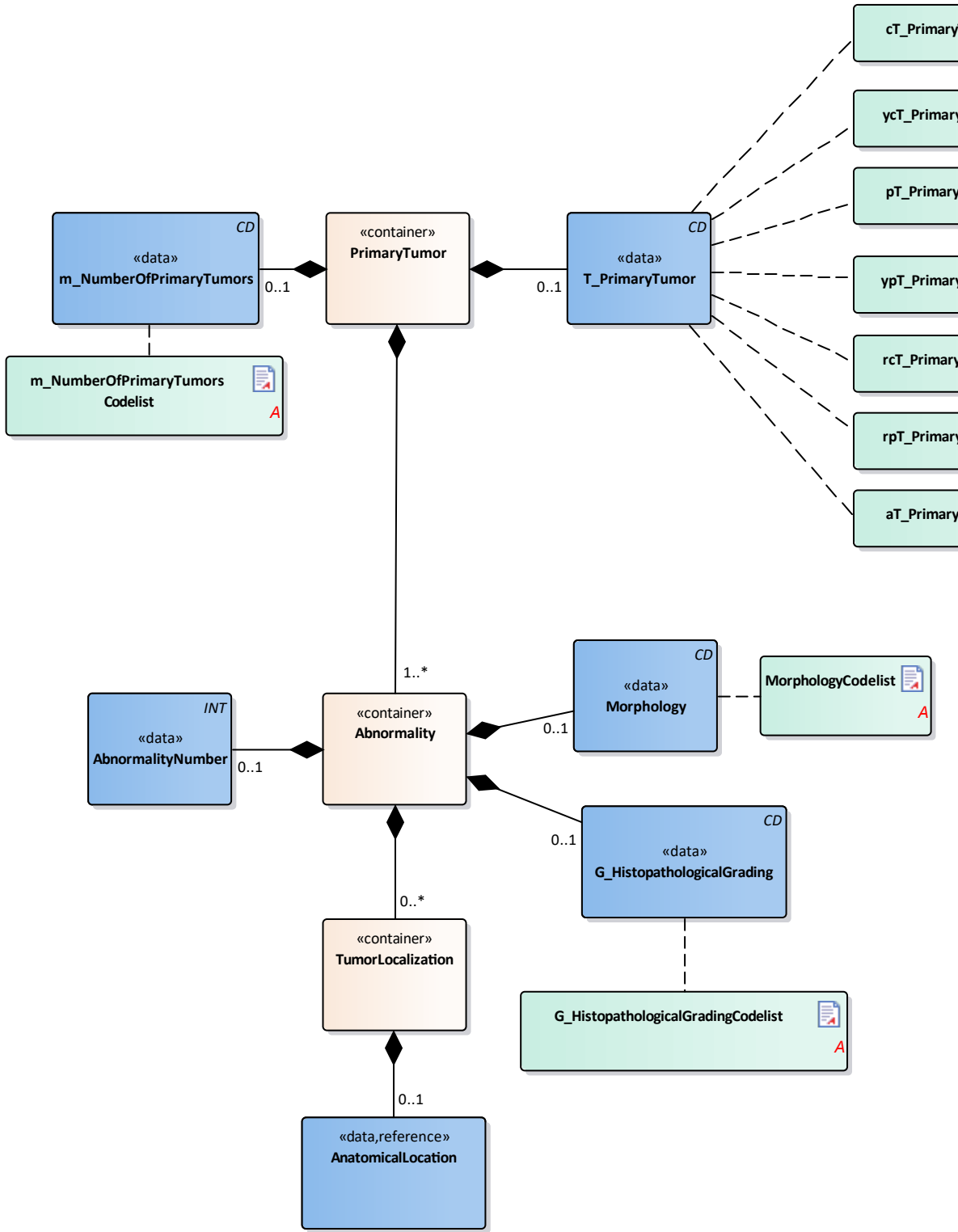
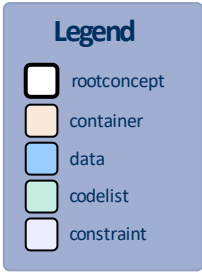
| | | | | |
|----------------|----------|-----------|---|--------------------|
| UICC 2e editie | UICCTNM2 | TNMVersie | 2.16.840.1.113883.2.4.3.11.60.40.4.10.8 | UICC TNM 2e editie |
| UICC 3e editie | UICCTNM3 | TNMVersie | 2.16.840.1.113883.2.4.3.11.60.40.4.10.8 | UICC TNM 3e editie |
| UICC 4e editie | UICCTNM4 | TNMVersie | 2.16.840.1.113883.2.4.3.11.60.40.4.10.8 | UICC TNM 4e editie |
| UICC 5e editie | UICCTNM5 | TNMVersie | 2.16.840.1.113883.2.4.3.11.60.40.4.10.8 | UICC TNM 5e editie |
| UICC 6e editie | UICCTNM6 | TNMVersie | 2.16.840.1.113883.2.4.3.11.60.40.4.10.8 | UICC TNM 6e editie |
| UICC 7e editie | UICCTNM7 | TNMVersie | 2.16.840.1.113883.2.4.3.11.60.40.4.10.8 | UICC TNM 7e editie |
| UICC 8e editie | UICCTNM8 | TNMVersie | 2.16.840.1.113883.2.4.3.11.60.40.4.10.8 | UICC TNM 8e editie |

| «document» | | V_VenousInvasionCodelist | |
|-----------------------------|---|--------------------------|--|
| Definitie | | | |
| Datatype | | | |
| DCM::ValueSetBinding | Extensible | | |
| DCM::ValueSetId | 2.16.840.1.113883.2.4.3.11.60.40.2.4.27.7 | | |
| Opties | | | |

| V_VeneuzeInvasieCodelijst | | | OID: 2.16.840.1.113883.2.4.3.11.60.40.2.4.27.7 | |
|---------------------------|--------------|--------------------|--|--|
| Concept Name | Concept Code | Coding System Name | Coding System OID | Description |
| VX | VX | V_VeneuzeInvasie | 2.16.840.1.113883.2.4.3.11.60.40.5.1.4 | Aanwezigheid van veneuze invasie kan beoordeeld worden |
| V0 | V0 | V_VeneuzeInvasie | 2.16.840.1.113883.2.4.3.11.60.40.5.1.4 | Geen veneuze invasie |
| V1 | V1 | V_VeneuzeInvasie | 2.16.840.1.113883.2.4.3.11.60.40.5.1.4 | Microscopische veneuze invasie |
| V2 | V2 | V_VeneuzeInvasie | 2.16.840.1.113883.2.4.3.11.60.40.5.1.4 | Macroscopische veneuze invasie |

| Legend | |
|------------------|--|
| Definitie | |
| Datatype | |
| Opties | |

1.7.1 PrimaryTumor



| | | |
|----------------------------|---|--|
| «container» | PrimaryTumor | |
| Definitie | Container of the PrimaryTumor concept. This container contains all data elements of the PrimaryTumor concept. | |
| Datatype | | |
| DCM::ConceptId | NL-CM:4.27.12 | |
| DCM::DefinitionCode | SNOMED CT: 86049000 Neoplasm, malignant (primary) | |
| Opties | | |

| | |
|---------------|--------------------------------|
| «data» | m_NumberOfPrimaryTumors |
|---------------|--------------------------------|

| | | |
|----------------------------|---|---|
| DCM::DefinitionCode | SNOMED CT: 133641000146103 number of primary tumors | |
| DCM::ValueSet | m_NumberOfPrimaryTumors Codelist | OID: 2.16.840.1.113883.2.4.3.11.60.40.2.4.27 |
| Opties | | |

| | | |
|----------------------------|--|---|
| «data» | T_PrimaryTumor | |
| Definitie | Staging result of the size extension of the primary tumor, the T-category of the TNM classification including the prefix and suffix. | |
| Datatype | CD | |
| DCM::ConceptId | NL-CM:4.27.14 | |
| DCM::DefinitionCode | SNOMED CT: 78873005 T category | |
| DCM::ExampleValue | T2 | |
| DCM::ValueSet | rcT_PrimaryTumorCodelist | OID: 2.16.840.1.113883.2.4.3.11.60.40.2.4.27 |
| DCM::ValueSet | aT_PrimaryTumorCodelist | OID: 2.16.840.1.113883.2.4.3.11.60.40.2.4.27 |
| DCM::ValueSet | cT_PrimaryTumorCodelist | OID: 2.16.840.1.113883.2.4.3.11.60.40.2.4.27 |
| DCM::ValueSet | ycT_PrimaryTumorCodelist | OID: 2.16.840.1.113883.2.4.3.11.60.40.2.4.27 |
| DCM::ValueSet | ypT_PrimaryTumorCodelist | OID: 2.16.840.1.113883.2.4.3.11.60.40.2.4.27 |
| DCM::ValueSet | rpT_PrimaryTumorCodelist | OID: 2.16.840.1.113883.2.4.3.11.60.40.2.4.27 |
| DCM::ValueSet | pT_PrimaryTumorCodelist | OID: 2.16.840.1.113883.2.4.3.11.60.40.2.4.27 |
| Opties | | |

| | | |
|----------------------------|---|--|
| «container» | Abnormality | |
| Definitie | Container of the Abnormality concept. This container contains all data elements of the Abnormality concept. | |
| Datatype | | |
| DCM::ConceptId | NL-CM:4.27.15 | |
| DCM::DefinitionCode | SNOMED CT: 108369006 Neoplasm | |
| Opties | | |

| | | |
|------------------|--|--|
| «data» | AbnormalityNumber | |
| Definitie | The number assigned to the abnormality, which is necessary in order to be able to clearly indicate to which abnormality the information relates in various examinations. In the case of multiple primary tumors in one organ, the tumor with the highest T category should be classified. | |

| | | |
|----------------------------|---|---|
| Datatype | CD | |
| DCM::ConceptId | NL-CM:4.27.17 | |
| DCM::DefinitionCode | SNOMED CT: 396984004 Histologic feature of tumor | |
| DCM::ValueSet | MorphologyCodelist | OID: 2.16.840.1.113883.2.4.3.11.60.40.2.4.27 |
| Opties | | |

| | | |
|----------------------------|---|---|
| «data» | G_HistopathologicalGrading | |
| Definitie | Staging result of the histopathological grading, the G-category of the TNM classification. The differentiation grade of a tumor is determined by a pathologist. | |
| Datatype | CD | |
| DCM::ConceptId | NL-CM:4.27.18 | |
| DCM::DefinitionCode | SNOMED CT: 371469007 Histologic grade | |
| DCM::ExampleValue | Grade II (Moderately differentiated) | |
| DCM::ValueSet | G_HistopathologicalGrading Codelist | OID: 2.16.840.1.113883.2.4.3.11.60.40.2.4.27 |
| Opties | | |

| | | |
|----------------------------|--|--|
| «container» | TumorLocalization | |
| Definitie | Container of the TumorLocalization concept. This container contains all elements of the TumorLocalization concept. | |
| Datatype | | |
| DCM::ConceptId | NL-CM:4.27.19 | |
| DCM::DefinitionCode | SNOMED CT: 399687005 Primary tumor site | |
| Opties | | |

| | | |
|---------------------------------|---|--|
| «data» | AnatomicalLocation | |
| Definitie | Contains the localization(s) of the primary tumor, which (i.a.) determines the assignment of the TNM classification to the tumor. | |
| Datatype | | |
| DCM::ConceptId | NL-CM:4.27.20 | |
| DCM::DefinitionCode | SNOMED CT: 399687005 Primary tumor site | |
| DCM::ReferencedConceptId | NL-CM:20.7.1 | This is a reference to the root concept of information model AnatomicalLocation. |
| Opties | | |

| | | |
|-----------------------------|---|--|
| «document» | m_NumberOfPrimaryTumors Codelist | |
| Definitie | | |
| Datatype | | |
| DCM::ValueSetBinding | Extensible | |

| | | | | |
|-------|------|--------------------------|--|--------------------|
| (1) | (1) | m_AantalPrimaire Tumoren | 2.16.840.1.113883.2.4.3.11.60.40.4.10.12 | 1 primaire tumor |
| (2) | (2) | m_AantalPrimaire Tumoren | 2.16.840.1.113883.2.4.3.11.60.40.4.10.12 | 2 primaire tumor |
| (3) | (3) | m_AantalPrimaire Tumoren | 2.16.840.1.113883.2.4.3.11.60.40.4.10.12 | 3 primaire tumor |
| (4) | (4) | m_AantalPrimaire Tumoren | 2.16.840.1.113883.2.4.3.11.60.40.4.10.12 | 4 primaire tumor |
| (5) | (5) | m_AantalPrimaire Tumoren | 2.16.840.1.113883.2.4.3.11.60.40.4.10.12 | 5 primaire tumor |
| (6) | (6) | m_AantalPrimaire Tumoren | 2.16.840.1.113883.2.4.3.11.60.40.4.10.12 | 6 primaire tumor |
| (7) | (7) | m_AantalPrimaire Tumoren | 2.16.840.1.113883.2.4.3.11.60.40.4.10.12 | 7 primaire tumor |
| (8) | (8) | m_AantalPrimaire Tumoren | 2.16.840.1.113883.2.4.3.11.60.40.4.10.12 | 8 primaire tumor |
| (9) | (9) | m_AantalPrimaire Tumoren | 2.16.840.1.113883.2.4.3.11.60.40.4.10.12 | 9 primaire tumor |
| (10) | (10) | m_AantalPrimaire Tumoren | 2.16.840.1.113883.2.4.3.11.60.40.4.10.12 | 10 primaire tumor |
| Other | OTH | nullflavor | 2.16.840.1.113883.5.1008 | Anders, specifieke |

| «document» | | G_HistopathologicalGradingCodelist | | |
|-------------------------------------|--|------------------------------------|---|--|
| Definitie | | | | |
| Datatype | | | | |
| DCM::ValueSetBinding | Extensible | | | |
| DCM::ValueSetId | 2.16.840.1.113883.2.4.3.11.60.40.2.4.27.17 | | | |
| Opties | | | | |
| G_DifferentiatiegraadTumorCodelijst | | | OID: 2.16.840.1.113883.2.4.3.11.60.40.2.4.27.17 | |
| Concept Name | Concept Code | Coding System Name | Coding System OID | Description |
| GX | GX | G_DifferentiatiegraadTumor | 2.16.840.1.113883.2.4.3.11.60.40.4.10.5 | Differentiatiegraad kan niet beoordeeld worden Grade cannot be assessed |
| G1 | G1 | G_DifferentiatiegraadTumor | 2.16.840.1.113883.2.4.3.11.60.40.4.10.5 | G1 Differentiatiegraad |

| | | | | |
|-----------------|-----------------|-----------------------|---|--|
| | | | | undifferentiated. |
| G4 | G4 | G_DifferentiatedTumor | 2.16.840.1.113883.2.4.3.11.60.40.4.10.5 | Ongedifferentieerd. Undifferentiated. |
| G5 | G5 | G_DifferentiatedTumor | 2.16.840.1.113883.2.4.3.11.60.40.4.10.5 | G5 |
| LowMitoticRate | LowMitoticRate | G_DifferentiatedTumor | 2.16.840.1.113883.2.4.3.11.60.40.4.10.5 | LowMitoticRate |
| HighMitoticRate | HighMitoticRate | G_DifferentiatedTumor | 2.16.840.1.113883.2.4.3.11.60.40.4.10.5 | HighMitoticRate |

| «document» | | MorphologyCodelist | |
|---|--|--|--|
| Definitie | | | |
| Datatype | | | |
| DCM::ValueSetBinding | Extensible | | |
| DCM::ValueSetId | 2.16.840.1.113883.2.4.3.11.60.40.2.4.27.16 | | |
| Opties | | | |
| MorfologieCodelijst | | OID: 2.16.840.1.113883.2.4.3.11.60.40.2.4.27.16 | |
| Codes | Coding Syst. Name | Coding System OID | |
| International Classification of Diseases for Oncology, version 3 (Morphology codes) | ICD-O-3 | 2.16.840.1.113883.6.43.1 | |

| «document» | | cT_PrimaryTumorCodelist | |
|----------------------|--|-------------------------|--|
| Definitie | De primaire tumor (T) voor een klinische classificatie, gebaseerd op gegevens vóór behandeling, zoals klinisch onderzoek, beeldvorming, endoscopie, bipten, chirurgische exploratie of onderzoek onder narcose en andere onderzoeken | | |
| Datatype | | | |
| DCM::ValueSetBinding | Extensible | | |
| DCM::ValueSetId | 2.16.840.1.113883.2.4.3.11.60.40.2.4.27.9 | | |
| Opties | | | |

| cT_PrimaireTumorCodelijst | | OID: 2.16.840.1.113883.2.4.3.11.60.40.2.4.27.9 | | |
|----------------------------------|--------------|---|---|-------------|
| Concept Name | Concept Code | Coding System Name | Coding System OID | Description |
| cTx | cTx | T_PrimaireTumor | 2.16.840.1.113883.2.4.3.11.60.40.4.10.1 | cTx |
| cT0 | cT0 | T_PrimaireTumor | 2.16.840.1.113883.2.4.3.11.60.40.4.10.1 | cT0 |
| cTa | cTa | T_PrimaireTumor | 2.16.840.1.113883.2.4.3.11.60.40.4.10.1 | cTa |
| cTis | cTis | T_PrimaireTumor | 2.16.840.1.113883.2.4.3.11.60.40.4.10.1 | cTis |

| | | | | |
|-------|-------|-----------------|---|-------|
| cT1a | cT1a | T_PrimaireTumor | 2.16.840.1.113883.2.4.3.11.60.40.4.10.1 | cT1a |
| cT1a1 | cT1a1 | T_PrimaireTumor | 2.16.840.1.113883.2.4.3.11.60.40.4.10.1 | cT1a1 |
| cT1a2 | cT1a2 | T_PrimaireTumor | 2.16.840.1.113883.2.4.3.11.60.40.4.10.1 | cT1a2 |
| cT1b | cT1b | T_PrimaireTumor | 2.16.840.1.113883.2.4.3.11.60.40.4.10.1 | cT1b |
| cT1b1 | cT1b1 | T_PrimaireTumor | 2.16.840.1.113883.2.4.3.11.60.40.4.10.1 | cT1b1 |
| cT1b2 | cT1b2 | T_PrimaireTumor | 2.16.840.1.113883.2.4.3.11.60.40.4.10.1 | cT1b2 |
| cT1c | cT1c | T_PrimaireTumor | 2.16.840.1.113883.2.4.3.11.60.40.4.10.1 | cT1c |
| cT1c1 | cT1c1 | T_PrimaireTumor | 2.16.840.1.113883.2.4.3.11.60.40.4.10.1 | cT1c1 |
| cT1c2 | cT1c2 | T_PrimaireTumor | 2.16.840.1.113883.2.4.3.11.60.40.4.10.1 | cT1c2 |
| cT1c3 | cT1c3 | T_PrimaireTumor | 2.16.840.1.113883.2.4.3.11.60.40.4.10.1 | cT1c3 |
| cT1d | cT1d | T_PrimaireTumor | 2.16.840.1.113883.2.4.3.11.60.40.4.10.1 | cT1d |
| cT2 | cT2 | T_PrimaireTumor | 2.16.840.1.113883.2.4.3.11.60.40.4.10.1 | cT2 |
| cT2a | cT2a | T_PrimaireTumor | 2.16.840.1.113883.2.4.3.11.60.40.4.10.1 | cT2a |
| cT2a1 | cT2a1 | T_PrimaireTumor | 2.16.840.1.113883.2.4.3.11.60.40.4.10.1 | cT2a1 |
| cT2a2 | cT2a2 | T_PrimaireTumor | 2.16.840.1.113883.2.4.3.11.60.40.4.10.1 | cT2a2 |
| cT2b | cT2b | T_PrimaireTumor | 2.16.840.1.113883.2.4.3.11.60.40.4.10.1 | cT2b |
| cT2c | cT2c | T_PrimaireTumor | 2.16.840.1.113883.2.4.3.11.60.40.4.10.1 | cT2c |
| cT2d | cT2d | T_PrimaireTumor | 2.16.840.1.113883.2.4.3.11.60.40.4.10.1 | cT2d |
| cT3 | cT3 | T_PrimaireTumor | 2.16.840.1.113883.2.4.3.11.60.40.4.10.1 | cT3 |
| cT3a | cT3a | T_PrimaireTumor | 2.16.840.1.113883.2.4.3.11.60.40.4.10.1 | cT3a |
| cT3b | cT3b | T_PrimaireTumor | 2.16.840.1.113883.2.4.3.11.60.40.4.10.1 | cT3b |
| cT3c | cT3c | T_PrimaireTumor | 2.16.840.1.113883.2.4.3.11.60.40.4.10.1 | cT3c |
| cT3d | cT3d | T_PrimaireTumor | 2.16.840.1.113883.2.4.3.11.60.40.4.10.1 | cT3d |
| cT3e | cT3e | T_PrimaireTumor | 2.16.840.1.113883.2.4.3.11.60.40.4.10.1 | cT3e |
| cT4 | cT4 | T_PrimaireTumor | 2.16.840.1.113883.2.4.3.11.60.40.4.10.1 | cT4 |
| cT4a | cT4a | T_PrimaireTumor | 2.16.840.1.113883.2.4.3.11.60.40.4.10.1 | cT4a |
| cT4b | cT4b | T_PrimaireTumor | 2.16.840.1.113883.2.4.3.11.60.40.4.10.1 | cT4b |
| cT4c | cT4c | T_PrimaireTumor | 2.16.840.1.113883.2.4.3.11.60.40.4.10.1 | cT4c |
| cT4d | cT4d | T_PrimaireTumor | 2.16.840.1.113883.2.4.3.11.60.40.4.10.1 | cT4d |
| cT4e | cT4e | T_PrimaireTumor | 2.16.840.1.113883.2.4.3.11.60.40.4.10.1 | cT4e |

| | | |
|-----------------------------------|---|--|
| «document» | ycT_PrimaryTumorCodelist | |
| Definitie | De primaire tumor (T) voor een klinische classificatie uitgevoerd tijdens na een initiële multimodaliteitsbehandeling (zijnde niet- chirurgisch). | |
| Datatype | | |
| DCM::ValueSetBinding | Extensible | |
| DCM::ValueSetId | 2.16.840.1.113883.2.4.3.11.60.40.2.4.27.10 | |
| Opties | | |
| ycT_PrimaireTumorCodelijst | | OID: 2.16.840.1.113883.2.4.3.11.60.40.2.4.27.10 |

| | | | | |
|---------------|---------------|-----------------|---|---------------|
| ycTis (LCIS) | ycTis (LCIS) | T_PrimaireTumor | 2.16.840.1.113883.2.4.3.11.60.40.4.10.1 | ycTis (LCIS) |
| ycTis (Paget) | ycTis (Paget) | T_PrimaireTumor | 2.16.840.1.113883.2.4.3.11.60.40.4.10.1 | ycTis (Paget) |
| ycTis pu | ycTis pu | T_PrimaireTumor | 2.16.840.1.113883.2.4.3.11.60.40.4.10.1 | ycTis pu |
| ycT1 | ycT1 | T_PrimaireTumor | 2.16.840.1.113883.2.4.3.11.60.40.4.10.1 | ycT1 |
| ycT1mi | ycT1mi | T_PrimaireTumor | 2.16.840.1.113883.2.4.3.11.60.40.4.10.1 | ycT1mi |
| ycT1a | ycT1a | T_PrimaireTumor | 2.16.840.1.113883.2.4.3.11.60.40.4.10.1 | ycT1a |
| ycT1a1 | ycT1a1 | T_PrimaireTumor | 2.16.840.1.113883.2.4.3.11.60.40.4.10.1 | ycT1a1 |
| ycT1a2 | ycT1a2 | T_PrimaireTumor | 2.16.840.1.113883.2.4.3.11.60.40.4.10.1 | ycT1a2 |
| ycT1b | ycT1b | T_PrimaireTumor | 2.16.840.1.113883.2.4.3.11.60.40.4.10.1 | ycT1b |
| ycT1b1 | ycT1b1 | T_PrimaireTumor | 2.16.840.1.113883.2.4.3.11.60.40.4.10.1 | ycT1b1 |
| ycT1b2 | ycT1b2 | T_PrimaireTumor | 2.16.840.1.113883.2.4.3.11.60.40.4.10.1 | ycT1b2 |
| ycT1c | ycT1c | T_PrimaireTumor | 2.16.840.1.113883.2.4.3.11.60.40.4.10.1 | ycT1c |
| ycT1c1 | ycT1c1 | T_PrimaireTumor | 2.16.840.1.113883.2.4.3.11.60.40.4.10.1 | ycT1c1 |
| ycT1c2 | ycT1c2 | T_PrimaireTumor | 2.16.840.1.113883.2.4.3.11.60.40.4.10.1 | ycT1c2 |
| ycT1c3 | ycT1c3 | T_PrimaireTumor | 2.16.840.1.113883.2.4.3.11.60.40.4.10.1 | ycT1c3 |
| ycT1d | ycT1d | T_PrimaireTumor | 2.16.840.1.113883.2.4.3.11.60.40.4.10.1 | ycT1d |
| ycT2 | ycT2 | T_PrimaireTumor | 2.16.840.1.113883.2.4.3.11.60.40.4.10.1 | ycT2 |
| ycT2a | ycT2a | T_PrimaireTumor | 2.16.840.1.113883.2.4.3.11.60.40.4.10.1 | ycT2a |
| ycT2a1 | ycT2a1 | T_PrimaireTumor | 2.16.840.1.113883.2.4.3.11.60.40.4.10.1 | ycT2a1 |
| ycT2a2 | ycT2a2 | T_PrimaireTumor | 2.16.840.1.113883.2.4.3.11.60.40.4.10.1 | ycT2a2 |
| ycT2b | ycT2b | T_PrimaireTumor | 2.16.840.1.113883.2.4.3.11.60.40.4.10.1 | ycT2b |
| ycT2c | ycT2c | T_PrimaireTumor | 2.16.840.1.113883.2.4.3.11.60.40.4.10.1 | ycT2c |
| ycT2d | ycT2d | T_PrimaireTumor | 2.16.840.1.113883.2.4.3.11.60.40.4.10.1 | ycT2d |
| ycT3 | ycT3 | T_PrimaireTumor | 2.16.840.1.113883.2.4.3.11.60.40.4.10.1 | ycT3 |
| ycT3a | ycT3a | T_PrimaireTumor | 2.16.840.1.113883.2.4.3.11.60.40.4.10.1 | ycT3a |
| ycT3b | ycT3b | T_PrimaireTumor | 2.16.840.1.113883.2.4.3.11.60.40.4.10.1 | ycT3b |
| ycT3c | ycT3c | T_PrimaireTumor | 2.16.840.1.113883.2.4.3.11.60.40.4.10.1 | ycT3c |
| ycT3d | ycT3d | T_PrimaireTumor | 2.16.840.1.113883.2.4.3.11.60.40.4.10.1 | ycT3d |
| ycT3e | ycT3e | T_PrimaireTumor | 2.16.840.1.113883.2.4.3.11.60.40.4.10.1 | ycT3e |
| ycT4 | ycT4 | T_PrimaireTumor | 2.16.840.1.113883.2.4.3.11.60.40.4.10.1 | ycT4 |
| ycT4a | ycT4a | T_PrimaireTumor | 2.16.840.1.113883.2.4.3.11.60.40.4.10.1 | ycT4a |
| ycT4b | ycT4b | T_PrimaireTumor | 2.16.840.1.113883.2.4.3.11.60.40.4.10.1 | ycT4b |
| ycT4c | ycT4c | T_PrimaireTumor | 2.16.840.1.113883.2.4.3.11.60.40.4.10.1 | ycT4c |
| ycT4d | ycT4d | T_PrimaireTumor | 2.16.840.1.113883.2.4.3.11.60.40.4.10.1 | ycT4d |
| ycT4e | ycT4e | T_PrimaireTumor | 2.16.840.1.113883.2.4.3.11.60.40.4.10.1 | ycT4e |

| | |
|-------------------|--|
| «document» | pT_PrimaryTumorCodelist |
| Definitie | De primaire tumor (T) voor een post chirurgische histologische pathologische classificatie. Dit is gebaseerd op de gegevens van voor d |

| Concept Name | Concept Code | Coding System Name | Coding System OID | Description |
|--------------|--------------|--------------------|---|--------------|
| pTx | pTx | T_PrimaireTumor | 2.16.840.1.113883.2.4.3.11.60.40.4.10.1 | pTx |
| pT0 | pT0 | T_PrimaireTumor | 2.16.840.1.113883.2.4.3.11.60.40.4.10.1 | pT0 |
| pTa | pTa | T_PrimaireTumor | 2.16.840.1.113883.2.4.3.11.60.40.4.10.1 | pTa |
| pTis | pTis | T_PrimaireTumor | 2.16.840.1.113883.2.4.3.11.60.40.4.10.1 | pTis |
| pTis (DCIS) | pTis (DCIS) | T_PrimaireTumor | 2.16.840.1.113883.2.4.3.11.60.40.4.10.1 | pTis (DCIS) |
| pTis (LAMN) | pTis (LAMN) | T_PrimaireTumor | 2.16.840.1.113883.2.4.3.11.60.40.4.10.1 | pTis (LAMN) |
| pTis (LCIS) | pTis (LCIS) | T_PrimaireTumor | 2.16.840.1.113883.2.4.3.11.60.40.4.10.1 | pTis (LCIS) |
| pTis (Paget) | pTis (Paget) | T_PrimaireTumor | 2.16.840.1.113883.2.4.3.11.60.40.4.10.1 | pTis (Paget) |
| pTis pu | pTis pu | T_PrimaireTumor | 2.16.840.1.113883.2.4.3.11.60.40.4.10.1 | pTis pu |
| pT1 | pT1 | T_PrimaireTumor | 2.16.840.1.113883.2.4.3.11.60.40.4.10.1 | pT1 |
| pT1mi | pT1mi | T_PrimaireTumor | 2.16.840.1.113883.2.4.3.11.60.40.4.10.1 | pT1mi |
| pT1a | pT1a | T_PrimaireTumor | 2.16.840.1.113883.2.4.3.11.60.40.4.10.1 | pT1a |
| pT1a1 | pT1a1 | T_PrimaireTumor | 2.16.840.1.113883.2.4.3.11.60.40.4.10.1 | pT1a1 |
| pT1a2 | pT1a2 | T_PrimaireTumor | 2.16.840.1.113883.2.4.3.11.60.40.4.10.1 | pT1a2 |
| pT1b | pT1b | T_PrimaireTumor | 2.16.840.1.113883.2.4.3.11.60.40.4.10.1 | pT1b |
| pT1b1 | pT1b1 | T_PrimaireTumor | 2.16.840.1.113883.2.4.3.11.60.40.4.10.1 | pT1b1 |
| pT1b2 | pT1b2 | T_PrimaireTumor | 2.16.840.1.113883.2.4.3.11.60.40.4.10.1 | pT1b2 |
| pT1c | pT1c | T_PrimaireTumor | 2.16.840.1.113883.2.4.3.11.60.40.4.10.1 | pT1c |
| pT1c1 | pT1c1 | T_PrimaireTumor | 2.16.840.1.113883.2.4.3.11.60.40.4.10.1 | pT1c1 |
| pT1c2 | pT1c2 | T_PrimaireTumor | 2.16.840.1.113883.2.4.3.11.60.40.4.10.1 | pT1c2 |
| pT1c3 | pT1c3 | T_PrimaireTumor | 2.16.840.1.113883.2.4.3.11.60.40.4.10.1 | pT1c3 |
| pT1d | pT1d | T_PrimaireTumor | 2.16.840.1.113883.2.4.3.11.60.40.4.10.1 | pT1d |
| pT2 | pT2 | T_PrimaireTumor | 2.16.840.1.113883.2.4.3.11.60.40.4.10.1 | pT2 |
| pT2a | pT2a | T_PrimaireTumor | 2.16.840.1.113883.2.4.3.11.60.40.4.10.1 | pT2a |
| pT2a1 | pT2a1 | T_PrimaireTumor | 2.16.840.1.113883.2.4.3.11.60.40.4.10.1 | pT2a1 |
| pT2a2 | pT2a2 | T_PrimaireTumor | 2.16.840.1.113883.2.4.3.11.60.40.4.10.1 | pT2a2 |
| pT2b | pT2b | T_PrimaireTumor | 2.16.840.1.113883.2.4.3.11.60.40.4.10.1 | pT2b |
| pT2c | pT2c | T_PrimaireTumor | 2.16.840.1.113883.2.4.3.11.60.40.4.10.1 | pT2c |
| pT2d | pT2d | T_PrimaireTumor | 2.16.840.1.113883.2.4.3.11.60.40.4.10.1 | pT2d |
| pT3 | pT3 | T_PrimaireTumor | 2.16.840.1.113883.2.4.3.11.60.40.4.10.1 | pT3 |
| pT3a | pT3a | T_PrimaireTumor | 2.16.840.1.113883.2.4.3.11.60.40.4.10.1 | pT3a |
| pT3b | pT3b | T_PrimaireTumor | 2.16.840.1.113883.2.4.3.11.60.40.4.10.1 | pT3b |
| pT3c | pT3c | T_PrimaireTumor | 2.16.840.1.113883.2.4.3.11.60.40.4.10.1 | pT3c |
| pT3d | pT3d | T_PrimaireTumor | 2.16.840.1.113883.2.4.3.11.60.40.4.10.1 | pT3d |
| pT4 | pT4 | T_PrimaireTumor | 2.16.840.1.113883.2.4.3.11.60.40.4.10.1 | pT4 |
| pT4a | pT4a | T_PrimaireTumor | 2.16.840.1.113883.2.4.3.11.60.40.4.10.1 | pT4a |
| pT4b | pT4b | T_PrimaireTumor | 2.16.840.1.113883.2.4.3.11.60.40.4.10.1 | pT4b |
| pT4c | pT4c | T_PrimaireTumor | 2.16.840.1.113883.2.4.3.11.60.40.4.10.1 | pT4c |

| | | |
|-----------------------------|--|--|
| | behandeling). | |
| Datatype | | |
| DCM::ValueSetBinding | Extensible | |
| DCM::ValueSetId | 2.16.840.1.113883.2.4.3.11.60.40.2.4.27.12 | |
| Opties | | |

ypT_PrimaireTumorCodelijst **OID: 2.16.840.1.113883.2.4.3.11.60.40.2.4.27.**

| Concept Name | Concept Code | Coding System Name | Coding System OID | Description |
|---------------------|---------------------|---------------------------|---|--------------------|
| ypTx | ypTx | T_PrimaireTumor | 2.16.840.1.113883.2.4.3.11.60.40.4.10.1 | ypTx |
| ypT0 | ypT0 | T_PrimaireTumor | 2.16.840.1.113883.2.4.3.11.60.40.4.10.1 | ypT0 |
| ypTa | ypTa | T_PrimaireTumor | 2.16.840.1.113883.2.4.3.11.60.40.4.10.1 | ypTa |
| ypTis | ypTis | T_PrimaireTumor | 2.16.840.1.113883.2.4.3.11.60.40.4.10.1 | ypTis |
| ypTis (DCIS) | ypTis (DCIS) | T_PrimaireTumor | 2.16.840.1.113883.2.4.3.11.60.40.4.10.1 | ypTis (DCIS) |
| ypTis (LAMN) | ypTis (LAMN) | T_PrimaireTumor | 2.16.840.1.113883.2.4.3.11.60.40.4.10.1 | ypTis (LAMN) |
| ypTis (LCIS) | ypTis (LCIS) | T_PrimaireTumor | 2.16.840.1.113883.2.4.3.11.60.40.4.10.1 | ypTis (LCIS) |
| ypTis (Paget) | ypTis (Paget) | T_PrimaireTumor | 2.16.840.1.113883.2.4.3.11.60.40.4.10.1 | ypTis (Paget) |
| ypTis pu | ypTis pu | T_PrimaireTumor | 2.16.840.1.113883.2.4.3.11.60.40.4.10.1 | ypTis pu |
| ypT1 | ypT1 | T_PrimaireTumor | 2.16.840.1.113883.2.4.3.11.60.40.4.10.1 | ypT1 |
| ypT1mi | ypT1mi | T_PrimaireTumor | 2.16.840.1.113883.2.4.3.11.60.40.4.10.1 | ypT1mi |
| ypT1a | ypT1a | T_PrimaireTumor | 2.16.840.1.113883.2.4.3.11.60.40.4.10.1 | ypT1a |
| ypT1a1 | ypT1a1 | T_PrimaireTumor | 2.16.840.1.113883.2.4.3.11.60.40.4.10.1 | ypT1a1 |
| ypT1a2 | ypT1a2 | T_PrimaireTumor | 2.16.840.1.113883.2.4.3.11.60.40.4.10.1 | ypT1a2 |
| ypT1b | ypT1b | T_PrimaireTumor | 2.16.840.1.113883.2.4.3.11.60.40.4.10.1 | ypT1b |
| ypT1b1 | ypT1b1 | T_PrimaireTumor | 2.16.840.1.113883.2.4.3.11.60.40.4.10.1 | ypT1b1 |
| ypT1b2 | ypT1b2 | T_PrimaireTumor | 2.16.840.1.113883.2.4.3.11.60.40.4.10.1 | ypT1b2 |
| ypT1c | ypT1c | T_PrimaireTumor | 2.16.840.1.113883.2.4.3.11.60.40.4.10.1 | ypT1c |
| ypT1c1 | ypT1c1 | T_PrimaireTumor | 2.16.840.1.113883.2.4.3.11.60.40.4.10.1 | ypT1c1 |
| ypT1c2 | ypT1c2 | T_PrimaireTumor | 2.16.840.1.113883.2.4.3.11.60.40.4.10.1 | ypT1c2 |
| ypT1c3 | ypT1c3 | T_PrimaireTumor | 2.16.840.1.113883.2.4.3.11.60.40.4.10.1 | ypT1c3 |
| ypT1d | ypT1d | T_PrimaireTumor | 2.16.840.1.113883.2.4.3.11.60.40.4.10.1 | ypT1d |
| ypT2 | ypT2 | T_PrimaireTumor | 2.16.840.1.113883.2.4.3.11.60.40.4.10.1 | ypT2 |
| ypT2a | ypT2a | T_PrimaireTumor | 2.16.840.1.113883.2.4.3.11.60.40.4.10.1 | ypT2a |
| ypT2a1 | ypT2a1 | T_PrimaireTumor | 2.16.840.1.113883.2.4.3.11.60.40.4.10.1 | ypT2a1 |
| ypT2a2 | ypT2a2 | T_PrimaireTumor | 2.16.840.1.113883.2.4.3.11.60.40.4.10.1 | ypT2a2 |
| ypT2b | ypT2b | T_PrimaireTumor | 2.16.840.1.113883.2.4.3.11.60.40.4.10.1 | ypT2b |
| ypT2c | ypT2c | T_PrimaireTumor | 2.16.840.1.113883.2.4.3.11.60.40.4.10.1 | ypT2c |
| ypT2d | ypT2d | T_PrimaireTumor | 2.16.840.1.113883.2.4.3.11.60.40.4.10.1 | ypT2d |
| ypT3 | ypT3 | T_PrimaireTumor | 2.16.840.1.113883.2.4.3.11.60.40.4.10.1 | ypT3 |
| ypT3a | ypT3a | T_PrimaireTumor | 2.16.840.1.113883.2.4.3.11.60.40.4.10.1 | ypT3a |
| ypT3b | ypT3b | T_PrimaireTumor | 2.16.840.1.113883.2.4.3.11.60.40.4.10.1 | ypT3b |

| | | | | |
|-------|-------|-----------------|---|-------|
| ypT4e | ypT4e | T_PrimaireTumor | 2.16.840.1.113883.2.4.3.11.60.40.4.10.1 | ypT4e |
|-------|-------|-----------------|---|-------|

| «document» | | rcT_PrimaryTumorCodelist | | |
|----------------------|---|--------------------------|--|--|
| Definitie | De primaire tumor (T) voor een klinische classificatie in geval van een recidiverende tumor (na een ziektevrij interval). | | | |
| Datatype | | | | |
| DCM::ValueSetBinding | Extensible | | | |
| DCM::ValueSetId | 2.16.840.1.113883.2.4.3.11.60.40.2.4.27.13 | | | |
| Opties | | | | |

| rcT_PrimaireTumorCodelijst | | OID: 2.16.840.1.113883.2.4.3.11.60.40.2.4.27.13 | | |
|----------------------------|--|---|--|--|
|----------------------------|--|---|--|--|

| Concept Name | Concept Code | Coding System Name | Coding System OID | Description |
|---------------|---------------|--------------------|---|---------------|
| rcTx | rcTx | T_PrimaireTumor | 2.16.840.1.113883.2.4.3.11.60.40.4.10.1 | rcTx |
| rcT0 | rcT0 | T_PrimaireTumor | 2.16.840.1.113883.2.4.3.11.60.40.4.10.1 | rcT0 |
| rcTa | rcTa | T_PrimaireTumor | 2.16.840.1.113883.2.4.3.11.60.40.4.10.1 | rcTa |
| rcTis | rcTis | T_PrimaireTumor | 2.16.840.1.113883.2.4.3.11.60.40.4.10.1 | rcTis |
| rcTis (DCIS) | rcTis (DCIS) | T_PrimaireTumor | 2.16.840.1.113883.2.4.3.11.60.40.4.10.1 | rcTis (DCIS) |
| rcTis (LAMN) | rcTis (LAMN) | T_PrimaireTumor | 2.16.840.1.113883.2.4.3.11.60.40.4.10.1 | rcTis (LAMN) |
| rcTis (LCIS) | rcTis (LCIS) | T_PrimaireTumor | 2.16.840.1.113883.2.4.3.11.60.40.4.10.1 | rcTis (LCIS) |
| rcTis (Paget) | rcTis (Paget) | T_PrimaireTumor | 2.16.840.1.113883.2.4.3.11.60.40.4.10.1 | rcTis (Paget) |
| rcTis pu | rcTis pu | T_PrimaireTumor | 2.16.840.1.113883.2.4.3.11.60.40.4.10.1 | rcTis pu |
| rcT1 | rcT1 | T_PrimaireTumor | 2.16.840.1.113883.2.4.3.11.60.40.4.10.1 | rcT1 |
| rcT1mi | rcT1mi | T_PrimaireTumor | 2.16.840.1.113883.2.4.3.11.60.40.4.10.1 | rcT1mi |
| rcT1a | rcT1a | T_PrimaireTumor | 2.16.840.1.113883.2.4.3.11.60.40.4.10.1 | rcT1a |
| rcT1a1 | rcT1a1 | T_PrimaireTumor | 2.16.840.1.113883.2.4.3.11.60.40.4.10.1 | rcT1a1 |
| rcT1a2 | rcT1a2 | T_PrimaireTumor | 2.16.840.1.113883.2.4.3.11.60.40.4.10.1 | rcT1a2 |
| rcT1b | rcT1b | T_PrimaireTumor | 2.16.840.1.113883.2.4.3.11.60.40.4.10.1 | rcT1b |
| rcT1b1 | rcT1b1 | T_PrimaireTumor | 2.16.840.1.113883.2.4.3.11.60.40.4.10.1 | rcT1b1 |
| rcT1b2 | rcT1b2 | T_PrimaireTumor | 2.16.840.1.113883.2.4.3.11.60.40.4.10.1 | rcT1b2 |
| rcT1c | rcT1c | T_PrimaireTumor | 2.16.840.1.113883.2.4.3.11.60.40.4.10.1 | rcT1c |
| rcT1c1 | rcT1c1 | T_PrimaireTumor | 2.16.840.1.113883.2.4.3.11.60.40.4.10.1 | rcT1c1 |
| rcT1c2 | rcT1c2 | T_PrimaireTumor | 2.16.840.1.113883.2.4.3.11.60.40.4.10.1 | rcT1c2 |
| rcT1c3 | rcT1c3 | T_PrimaireTumor | 2.16.840.1.113883.2.4.3.11.60.40.4.10.1 | rcT1c3 |
| rcT1d | rcT1d | T_PrimaireTumor | 2.16.840.1.113883.2.4.3.11.60.40.4.10.1 | rcT1d |
| rcT2 | rcT2 | T_PrimaireTumor | 2.16.840.1.113883.2.4.3.11.60.40.4.10.1 | rcT2 |
| rcT2a | rcT2a | T_PrimaireTumor | 2.16.840.1.113883.2.4.3.11.60.40.4.10.1 | rcT2a |
| rcT2a1 | rcT2a1 | T_PrimaireTumor | 2.16.840.1.113883.2.4.3.11.60.40.4.10.1 | rcT2a1 |

| | | | | |
|-------|-------|-----------------|---|-------|
| rcT3d | rcT3d | T_PrimaireTumor | 2.16.840.1.113883.2.4.3.11.60.40.4.10.1 | rcT3d |
| rcT3e | rcT3e | T_PrimaireTumor | 2.16.840.1.113883.2.4.3.11.60.40.4.10.1 | rcT3e |
| rcT4 | rcT4 | T_PrimaireTumor | 2.16.840.1.113883.2.4.3.11.60.40.4.10.1 | rcT4 |
| rcT4a | rcT4a | T_PrimaireTumor | 2.16.840.1.113883.2.4.3.11.60.40.4.10.1 | rcT4a |
| rcT4b | rcT4b | T_PrimaireTumor | 2.16.840.1.113883.2.4.3.11.60.40.4.10.1 | rcT4b |
| rcT4c | rcT4c | T_PrimaireTumor | 2.16.840.1.113883.2.4.3.11.60.40.4.10.1 | rcT4c |
| rcT4d | rcT4d | T_PrimaireTumor | 2.16.840.1.113883.2.4.3.11.60.40.4.10.1 | rcT4d |
| rcT4e | rcT4e | T_PrimaireTumor | 2.16.840.1.113883.2.4.3.11.60.40.4.10.1 | rcT4e |

| | | | |
|-----------------------------|---|--|--|
| «document» | rpT_PrimaryTumorCodelist | | |
| Definitie | De primaire tumor (T) voor een post chirurgische pathologische classificatie in geval van een recidiverende tumor (na een ziektevrij interval). | | |
| Datatype | | | |
| DCM::ValueSetBinding | Extensible | | |
| DCM::ValueSetId | 2.16.840.1.113883.2.4.3.11.60.40.2.4.27.14 | | |
| Opties | | | |

| | |
|----------------------------------|--|
| rpT_PrimaireTumorCodelist | OID: 2.16.840.1.113883.2.4.3.11.60.40.2.4.27.14 |
|----------------------------------|--|

| Concept Name | Concept Code | Coding System Name | Coding System OID | Description |
|---------------------|---------------------|---------------------------|---|--------------------|
| rpTx | rpTx | T_PrimaireTumor | 2.16.840.1.113883.2.4.3.11.60.40.4.10.1 | rpTx |
| rpT0 | rpT0 | T_PrimaireTumor | 2.16.840.1.113883.2.4.3.11.60.40.4.10.1 | rpT0 |
| rpTa | rpTa | T_PrimaireTumor | 2.16.840.1.113883.2.4.3.11.60.40.4.10.1 | rpTa |
| rpTis | rpTis | T_PrimaireTumor | 2.16.840.1.113883.2.4.3.11.60.40.4.10.1 | rpTis |
| rpTis (DCIS) | rpTis (DCIS) | T_PrimaireTumor | 2.16.840.1.113883.2.4.3.11.60.40.4.10.1 | rpTis (DCIS) |
| rpTis (LAMN) | rpTis (LAMN) | T_PrimaireTumor | 2.16.840.1.113883.2.4.3.11.60.40.4.10.1 | rpTis (LAMN) |
| rpTis (LCIS) | rpTis (LCIS) | T_PrimaireTumor | 2.16.840.1.113883.2.4.3.11.60.40.4.10.1 | rpTis (LCIS) |
| rpTis (Paget) | rpTis (Paget) | T_PrimaireTumor | 2.16.840.1.113883.2.4.3.11.60.40.4.10.1 | rpTis (Paget) |
| rpTis pu | rpTis pu | T_PrimaireTumor | 2.16.840.1.113883.2.4.3.11.60.40.4.10.1 | rpTis pu |
| rpT1 | rpT1 | T_PrimaireTumor | 2.16.840.1.113883.2.4.3.11.60.40.4.10.1 | rpT1 |
| rpT1mi | rpT1mi | T_PrimaireTumor | 2.16.840.1.113883.2.4.3.11.60.40.4.10.1 | rpT1mi |
| rpT1a | rpT1a | T_PrimaireTumor | 2.16.840.1.113883.2.4.3.11.60.40.4.10.1 | rpT1a |
| rpT1a1 | rpT1a1 | T_PrimaireTumor | 2.16.840.1.113883.2.4.3.11.60.40.4.10.1 | rpT1a1 |
| rpT1a2 | rpT1a2 | T_PrimaireTumor | 2.16.840.1.113883.2.4.3.11.60.40.4.10.1 | rpT1a2 |
| rpT1b | rpT1b | T_PrimaireTumor | 2.16.840.1.113883.2.4.3.11.60.40.4.10.1 | rpT1b |
| rpT1b1 | rpT1b1 | T_PrimaireTumor | 2.16.840.1.113883.2.4.3.11.60.40.4.10.1 | rpT1b1 |
| rpT1b2 | rpT1b2 | T_PrimaireTumor | 2.16.840.1.113883.2.4.3.11.60.40.4.10.1 | rpT1b2 |
| rpT1c | rpT1c | T_PrimaireTumor | 2.16.840.1.113883.2.4.3.11.60.40.4.10.1 | rpT1c |
| rpT1c1 | rpT1c1 | T_PrimaireTumor | 2.16.840.1.113883.2.4.3.11.60.40.4.10.1 | rpT1c1 |

| | | | | |
|-------|-------|-----------------|---|-------|
| rpT2c | rpT2c | T_PrimaireTumor | 2.16.840.1.113883.2.4.3.11.60.40.4.10.1 | rpT2c |
| rpT2d | rpT2d | T_PrimaireTumor | 2.16.840.1.113883.2.4.3.11.60.40.4.10.1 | rpT2d |
| rpT3 | rpT3 | T_PrimaireTumor | 2.16.840.1.113883.2.4.3.11.60.40.4.10.1 | rpT3 |
| rpT3a | rpT3a | T_PrimaireTumor | 2.16.840.1.113883.2.4.3.11.60.40.4.10.1 | rpT3a |
| rpT3b | rpT3b | T_PrimaireTumor | 2.16.840.1.113883.2.4.3.11.60.40.4.10.1 | rpT3b |
| rpT3c | rpT3c | T_PrimaireTumor | 2.16.840.1.113883.2.4.3.11.60.40.4.10.1 | rpT3c |
| rpT3d | rpT3d | T_PrimaireTumor | 2.16.840.1.113883.2.4.3.11.60.40.4.10.1 | rpT3d |
| rpT4 | rpT4 | T_PrimaireTumor | 2.16.840.1.113883.2.4.3.11.60.40.4.10.1 | rpT4 |
| rpT4a | rpT4a | T_PrimaireTumor | 2.16.840.1.113883.2.4.3.11.60.40.4.10.1 | rpT4a |
| rpT4b | rpT4b | T_PrimaireTumor | 2.16.840.1.113883.2.4.3.11.60.40.4.10.1 | rpT4b |
| rpT4c | rpT4c | T_PrimaireTumor | 2.16.840.1.113883.2.4.3.11.60.40.4.10.1 | rpT4c |
| rpT4d | rpT4d | T_PrimaireTumor | 2.16.840.1.113883.2.4.3.11.60.40.4.10.1 | rpT4d |
| rpT4e | rpT4e | T_PrimaireTumor | 2.16.840.1.113883.2.4.3.11.60.40.4.10.1 | rpT4e |

| | | | |
|-----------------------------|---|--|--|
| «document» | aT_PrimaryTumorCodelist | | |
| Definitie | De primaire tumor (T) voor een classificatie vastgesteld tijdens autopsie | | |
| Datatype | | | |
| DCM::ValueSetBinding | Extensible | | |
| DCM::ValueSetId | 2.16.840.1.113883.2.4.3.11.60.40.2.4.27.15 | | |
| Opties | | | |

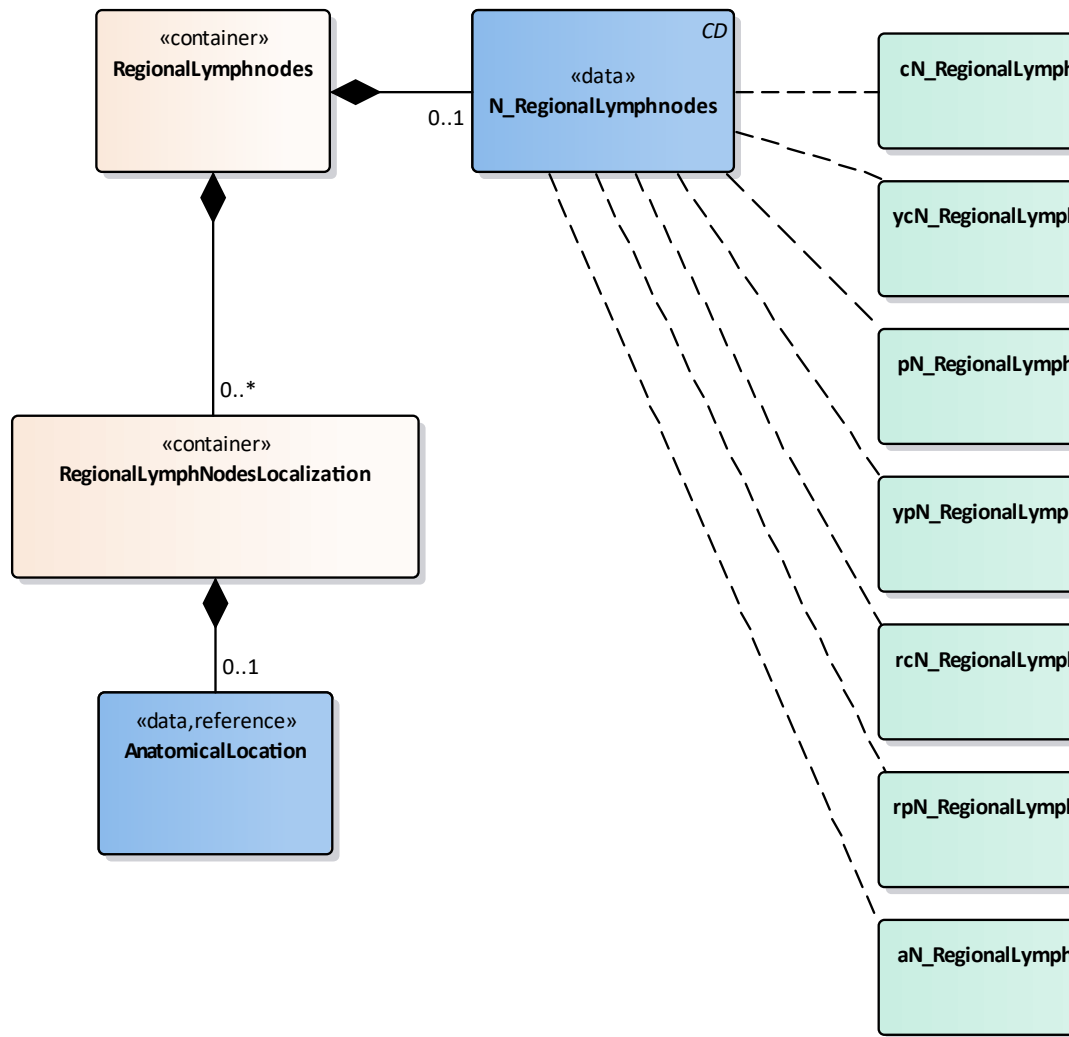
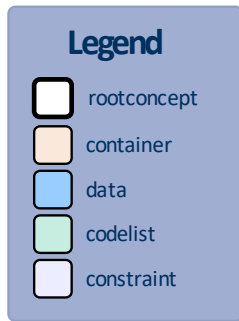
| | |
|----------------------------------|--|
| aT_PrimaireTumorCodelijst | OID: 2.16.840.1.113883.2.4.3.11.60.40.2.4.27.15 |
|----------------------------------|--|

| Concept Name | Concept Code | Coding System Name | Coding System OID | Description |
|---------------------|---------------------|---------------------------|---|--------------------|
| aTx | aTx | T_PrimaireTumor | 2.16.840.1.113883.2.4.3.11.60.40.4.10.1 | aTx |
| aT0 | aT0 | T_PrimaireTumor | 2.16.840.1.113883.2.4.3.11.60.40.4.10.1 | aT0 |
| aTa | aTa | T_PrimaireTumor | 2.16.840.1.113883.2.4.3.11.60.40.4.10.1 | aTa |
| aTis | aTis | T_PrimaireTumor | 2.16.840.1.113883.2.4.3.11.60.40.4.10.1 | aTis |
| aTis (DCIS) | aTis (DCIS) | T_PrimaireTumor | 2.16.840.1.113883.2.4.3.11.60.40.4.10.1 | aTis (DCIS) |
| aTis (LAMN) | aTis (LAMN) | T_PrimaireTumor | 2.16.840.1.113883.2.4.3.11.60.40.4.10.1 | aTis (LAMN) |
| aTis (LCIS) | aTis (LCIS) | T_PrimaireTumor | 2.16.840.1.113883.2.4.3.11.60.40.4.10.1 | aTis (LCIS) |
| aTis (Paget) | aTis (Paget) | T_PrimaireTumor | 2.16.840.1.113883.2.4.3.11.60.40.4.10.1 | aTis (Paget) |
| aTis pu | aTis pu | T_PrimaireTumor | 2.16.840.1.113883.2.4.3.11.60.40.4.10.1 | aTis pu |
| aT1 | aT1 | T_PrimaireTumor | 2.16.840.1.113883.2.4.3.11.60.40.4.10.1 | aT1 |
| aT1mi | aT1mi | T_PrimaireTumor | 2.16.840.1.113883.2.4.3.11.60.40.4.10.1 | aT1mi |
| aT1a | aT1a | T_PrimaireTumor | 2.16.840.1.113883.2.4.3.11.60.40.4.10.1 | aT1a |
| aT1a1 | aT1a1 | T_PrimaireTumor | 2.16.840.1.113883.2.4.3.11.60.40.4.10.1 | aT1a1 |
| aT1a2 | aT1a2 | T_PrimaireTumor | 2.16.840.1.113883.2.4.3.11.60.40.4.10.1 | aT1a2 |
| aT1b | aT1b | T_PrimaireTumor | 2.16.840.1.113883.2.4.3.11.60.40.4.10.1 | aT1b |
| aT1b1 | aT1b1 | T_PrimaireTumor | 2.16.840.1.113883.2.4.3.11.60.40.4.10.1 | aT1b1 |

| | | | | |
|-------|-------|-----------------|---|-------|
| aT2a1 | aT2a1 | T_PrimaireTumor | 2.16.840.1.113883.2.4.3.11.60.40.4.10.1 | aT2a1 |
| aT2a2 | aT2a2 | T_PrimaireTumor | 2.16.840.1.113883.2.4.3.11.60.40.4.10.1 | aT2a2 |
| aT2b | aT2b | T_PrimaireTumor | 2.16.840.1.113883.2.4.3.11.60.40.4.10.1 | aT2b |
| aT2c | aT2c | T_PrimaireTumor | 2.16.840.1.113883.2.4.3.11.60.40.4.10.1 | aT2c |
| aT2d | aT2d | T_PrimaireTumor | 2.16.840.1.113883.2.4.3.11.60.40.4.10.1 | aT2d |
| aT3 | aT3 | T_PrimaireTumor | 2.16.840.1.113883.2.4.3.11.60.40.4.10.1 | aT3 |
| aT3a | aT3a | T_PrimaireTumor | 2.16.840.1.113883.2.4.3.11.60.40.4.10.1 | aT3a |
| aT3b | aT3b | T_PrimaireTumor | 2.16.840.1.113883.2.4.3.11.60.40.4.10.1 | aT3b |
| aT3c | aT3c | T_PrimaireTumor | 2.16.840.1.113883.2.4.3.11.60.40.4.10.1 | aT3c |
| aT3d | aT3d | T_PrimaireTumor | 2.16.840.1.113883.2.4.3.11.60.40.4.10.1 | aT3d |
| aT3e | aT3e | T_PrimaireTumor | 2.16.840.1.113883.2.4.3.11.60.40.4.10.1 | aT3e |
| aT4 | aT4 | T_PrimaireTumor | 2.16.840.1.113883.2.4.3.11.60.40.4.10.1 | aT4 |
| aT4a | aT4a | T_PrimaireTumor | 2.16.840.1.113883.2.4.3.11.60.40.4.10.1 | aT4a |
| aT4b | aT4b | T_PrimaireTumor | 2.16.840.1.113883.2.4.3.11.60.40.4.10.1 | aT4b |
| aT4c | aT4c | T_PrimaireTumor | 2.16.840.1.113883.2.4.3.11.60.40.4.10.1 | aT4c |
| aT4d | aT4d | T_PrimaireTumor | 2.16.840.1.113883.2.4.3.11.60.40.4.10.1 | aT4d |
| aT4e | aT4e | T_PrimaireTumor | 2.16.840.1.113883.2.4.3.11.60.40.4.10.1 | aT4e |

| Legend | |
|------------------|--|
| Definitie | |
| Datatype | |
| Opties | |

1.7.2 Regionallymphnodes



| «container» | RegionalLymphnodes | |
|----------------------------|---|--|
| Definitie | Container of the RegionalLymphnodes concept. This container contains data elements of the RegionalLymphnodes concept. | |
| Datatype | | |
| DCM::ConceptId | NL-CM:4.27.21 | |
| DCM::DefinitionCode | SNOMED CT: 301855007 Finding of lymph node | |
| Opties | | |

| «data» | N_RegionalLymphnodes | |
|----------------------------|---|---|
| Definitie | Staging result of the presence or absence of regional lymph nodes metastasis, the N-category of the TNM classification. | |
| Datatype | CD | |
| DCM::ConceptId | NL-CM:4.27.22 | |
| DCM::DefinitionCode | SNOMED CT: 277206009 N category | |
| DCM::ValueSet | ycN_RegionalLymphnodesCodelist | OID: 2.16.840.1.113883.2.4.3.11.60.40.2.4.27 |
| DCM::ValueSet | pN_RegionalLymphnodesCodelist | OID: 2.16.840.1.113883.2.4.3.11.60.40.2.4.27 |
| DCM::ValueSet | aN_RegionalLymphnodesCodelist | OID: |

| | |
|---------------|--|
| Opties | |
|---------------|--|

| | | |
|----------------------------|---|--|
| «container» | RegionallymphNodesLocalization | |
| Definitie | Container of the RegionallymphNodesLocalization concept. This container contains all data elements of the RegionallymphNodesLocalization concept. | |
| Datatype | | |
| DCM::ConceptId | NL-CM:4.27.23 | |
| DCM::DefinitionCode | SNOMED CT: 364108009 Lymph node observable | |
| Opties | | |

| | | |
|---------------------------------|---|---|
| «data» | AnatomicalLocation | |
| Definitie | Contains the localization(s) of the positive regional lymph nodes, cause the primary tumor. | |
| Datatype | | |
| DCM::ConceptId | NL-CM:4.27.24 | |
| DCM::DefinitionCode | SNOMED CT: 397440000 Finding site | |
| DCM::ReferencedConceptId | NL-CM:20.7.1 | This is a reference to the rootconcept of information model AnatomicalLocation. |
| Opties | | |

| | | |
|-----------------------------|---|--|
| «document» | cN_RegionalLymphnodesCodelist | |
| Definitie | De regionale lymfeklieren (N) voor een klinische classificatie, gebaseerd op gegevens vóór behandeling, zoals klinisch onderzoek, beeldvorming, endoscopie, bipten, chirurgische exploratie of onderzoek onder narcose en andere onderzoeken. | |
| Datatype | | |
| DCM::ValueSetBinding | Extensible | |
| DCM::ValueSetId | 2.16.840.1.113883.2.4.3.11.60.40.2.4.27.18 | |
| Opties | | |

| | |
|--|--|
| cN_RegionaleLymfeklierenCodelijst | OID: 2.16.840.1.113883.2.4.3.11.60.40.2.4.27.18 |
|--|--|

| Concept Name | Concept Code | Coding System Name | Coding System OID | Description |
|--------------|--------------|-------------------------|---|-------------|
| cNX | cNX | N_RegionaleLymfeklieren | 2.16.840.1.113883.2.4.3.11.60.40.4.10.2 | cNX |
| cNX(f) | cNX(f) | N_RegionaleLymfeklieren | 2.16.840.1.113883.2.4.3.11.60.40.4.10.2 | cNX(f) |
| cNX(sn) | cNX(sn) | N_RegionaleLymfeklieren | 2.16.840.1.113883.2.4.3.11.60.40.4.10.2 | cNX(sn) |
| cNO | cNO | N_RegionaleLymfeklieren | 2.16.840.1.113883.2.4.3.11.60.40.4.10.2 | cNO |
| cNO(f) | cNO(f) | N_RegionaleLymfeklieren | 2.16.840.1.113883.2.4.3.11.60.40.4.10.2 | cNO(f) |

| | | | | |
|---------------|---------------|-------------------------|---|---------------|
| cN0(i+)(sn) | cN0(i+)(sn) | N_RegionaleLymfeklieren | 2.16.840.1.113883.2.4.3.11.60.40.4.10.2 | cN0(i+)(sn) |
| cN0(mol-) | cN0(mol-) | N_RegionaleLymfeklieren | 2.16.840.1.113883.2.4.3.11.60.40.4.10.2 | cN0(mol-) |
| cN0(mol-)(sn) | cN0(mol-)(sn) | N_RegionaleLymfeklieren | 2.16.840.1.113883.2.4.3.11.60.40.4.10.2 | cN0(mol-)(sn) |
| cN0(mol+) | cN0(mol+) | N_RegionaleLymfeklieren | 2.16.840.1.113883.2.4.3.11.60.40.4.10.2 | cN0(mol+) |
| cN0(mol+)(sn) | cN0(mol+)(sn) | N_RegionaleLymfeklieren | 2.16.840.1.113883.2.4.3.11.60.40.4.10.2 | cN0(mol+)(sn) |
| cN1 | cN1 | N_RegionaleLymfeklieren | 2.16.840.1.113883.2.4.3.11.60.40.4.10.2 | cN1 |
| cN1(f) | cN1(f) | N_RegionaleLymfeklieren | 2.16.840.1.113883.2.4.3.11.60.40.4.10.2 | cN1(f) |
| cN1(sn) | cN1(sn) | N_RegionaleLymfeklieren | 2.16.840.1.113883.2.4.3.11.60.40.4.10.2 | cN1(sn) |
| cN1mi | cN1mi | N_RegionaleLymfeklieren | 2.16.840.1.113883.2.4.3.11.60.40.4.10.2 | cN1mi |
| cN1mi(f) | cN1mi(f) | N_RegionaleLymfeklieren | 2.16.840.1.113883.2.4.3.11.60.40.4.10.2 | cN1mi(f) |
| cN1mi(sn) | cN1mi(sn) | N_RegionaleLymfeklieren | 2.16.840.1.113883.2.4.3.11.60.40.4.10.2 | cN1mi(sn) |
| cN1a | cN1a | N_RegionaleLymfeklieren | 2.16.840.1.113883.2.4.3.11.60.40.4.10.2 | cN1a |
| cN1a(f) | cN1a(f) | N_RegionaleLymfeklieren | 2.16.840.1.113883.2.4.3.11.60.40.4.10.2 | cN1a(f) |
| cN1a(sn) | cN1a(sn) | N_RegionaleLymfeklieren | 2.16.840.1.113883.2.4.3.11.60.40.4.10.2 | cN1a(sn) |
| cN1b | cN1b | N_RegionaleLymfeklieren | 2.16.840.1.113883.2.4.3.11.60.40.4.10.2 | cN1b |
| cN1b(f) | cN1b(f) | N_RegionaleLymfeklieren | 2.16.840.1.113883.2.4.3.11.60.40.4.10.2 | cN1b(f) |
| cN1b(sn) | cN1b(sn) | N_RegionaleLymfeklieren | 2.16.840.1.113883.2.4.3.11.60.40.4.10.2 | cN1b(sn) |
| cN1c | cN1c | N_RegionaleLymfeklieren | 2.16.840.1.113883.2.4.3.11.60.40.4.10.2 | cN1c |
| cN1c(f) | cN1c(f) | N_RegionaleLymfeklieren | 2.16.840.1.113883.2.4.3.11.60.40.4.10.2 | cN1c(f) |
| cN1c(sn) | cN1c(sn) | N_RegionaleLymfeklieren | 2.16.840.1.113883.2.4.3.11.60.40.4.10.2 | cN1c(sn) |
| cN2 | cN2 | N_RegionaleLymfeklieren | 2.16.840.1.113883.2.4.3.11.60.40.4.10.2 | cN2 |
| cN2(f) | cN2(f) | N_RegionaleLymfeklieren | 2.16.840.1.113883.2.4.3.11.60.40.4.10.2 | cN2(f) |
| cN2(sn) | cN2(sn) | N_RegionaleLymfeklieren | 2.16.840.1.113883.2.4.3.11.60.40.4.10.2 | cN2(sn) |
| cN2a | cN2a | N_RegionaleLymfeklieren | 2.16.840.1.113883.2.4.3.11.60.40.4.10.2 | cN2a |
| cN2a(f) | cN2a(f) | N_RegionaleLymfeklieren | 2.16.840.1.113883.2.4.3.11.60.40.4.10.2 | cN2a(f) |

| | | | | |
|----------|----------|-------------------------|---|----------|
| cN2c | cN2c | N_RegionaleLymfeklieren | 2.16.840.1.113883.2.4.3.11.60.40.4.10.2 | cN2c |
| cN2c(f) | cN2c(f) | N_RegionaleLymfeklieren | 2.16.840.1.113883.2.4.3.11.60.40.4.10.2 | cN2c(f) |
| cN2c(sn) | cN2c(sn) | N_RegionaleLymfeklieren | 2.16.840.1.113883.2.4.3.11.60.40.4.10.2 | cN2c(sn) |
| cN3 | cN3 | N_RegionaleLymfeklieren | 2.16.840.1.113883.2.4.3.11.60.40.4.10.2 | cN3 |
| cN3(f) | cN3(f) | N_RegionaleLymfeklieren | 2.16.840.1.113883.2.4.3.11.60.40.4.10.2 | cN3(f) |
| cN3(sn) | cN3(sn) | N_RegionaleLymfeklieren | 2.16.840.1.113883.2.4.3.11.60.40.4.10.2 | cN3(sn) |
| cN3a | cN3a | N_RegionaleLymfeklieren | 2.16.840.1.113883.2.4.3.11.60.40.4.10.2 | cN3a |
| cN3a(f) | cN3a(f) | N_RegionaleLymfeklieren | 2.16.840.1.113883.2.4.3.11.60.40.4.10.2 | cN3a(f) |
| cN3a(sn) | cN3a(sn) | N_RegionaleLymfeklieren | 2.16.840.1.113883.2.4.3.11.60.40.4.10.2 | cN3a(sn) |
| cN3b | cN3b | N_RegionaleLymfeklieren | 2.16.840.1.113883.2.4.3.11.60.40.4.10.2 | cN3b |
| cN3b(f) | cN3b(f) | N_RegionaleLymfeklieren | 2.16.840.1.113883.2.4.3.11.60.40.4.10.2 | cN3b(f) |
| cN3b(sn) | cN3b(sn) | N_RegionaleLymfeklieren | 2.16.840.1.113883.2.4.3.11.60.40.4.10.2 | cN3b(sn) |
| cN3c | cN3c | N_RegionaleLymfeklieren | 2.16.840.1.113883.2.4.3.11.60.40.4.10.2 | cN3c |
| cN3c(f) | cN3c(f) | N_RegionaleLymfeklieren | 2.16.840.1.113883.2.4.3.11.60.40.4.10.2 | cN3c(f) |
| cN3c(sn) | cN3c(sn) | N_RegionaleLymfeklieren | 2.16.840.1.113883.2.4.3.11.60.40.4.10.2 | cN3c(sn) |

| | | | |
|-----------------------------|---|--|--|
| «document» | ycN_RegionaleLymfnodesCodelist | | |
| Definitie | De uitbreiding naar regionale lymfeklieren (N) voor een klinische classificatie uitgevoerd tijdens of na een initiële multimodaliteitsbehandeling (zijnde niet- chirurgisch). | | |
| Datatype | | | |
| DCM::ValueSetBinding | Extensible | | |
| DCM::ValueSetId | 2.16.840.1.113883.2.4.3.11.60.40.2.4.27.19 | | |
| Opties | | | |

ycN_RegionaleLymfeklierenCodelijst **OID: 2.16.840.1.113883.2.4.3.11.60.40.2.4.27.19**

| Concept Name | Concept Code | Coding System Name | Coding System OID | Description |
|--------------|--------------|-------------------------|---|-------------|
| ycNX | ycNX | N_RegionaleLymfeklieren | 2.16.840.1.113883.2.4.3.11.60.40.4.10.2 | ycNX |

| | | | | |
|----------------|----------------|--------------------------|---|----------------|
| | | Lymfeklieren | | |
| ycN0(i-) | ycN0(i-) | N_Regionale Lymfeklieren | 2.16.840.1.113883.2.4.3.11.60.40.4.10.2 | ycN0(i-) |
| ycN0(i-)(sn) | ycN0(i-)(sn) | N_Regionale Lymfeklieren | 2.16.840.1.113883.2.4.3.11.60.40.4.10.2 | ycN0(i-)(sn) |
| ycN0(i+) | ycN0(i+) | N_Regionale Lymfeklieren | 2.16.840.1.113883.2.4.3.11.60.40.4.10.2 | ycN0(i+) |
| ycN0(i+)(sn) | ycN0(i+)(sn) | N_Regionale Lymfeklieren | 2.16.840.1.113883.2.4.3.11.60.40.4.10.2 | ycN0(i+)(sn) |
| ycN0(mol-) | ycN0(mol-) | N_Regionale Lymfeklieren | 2.16.840.1.113883.2.4.3.11.60.40.4.10.2 | ycN0(mol-) |
| ycN0(mol-)(sn) | ycN0(mol-)(sn) | N_Regionale Lymfeklieren | 2.16.840.1.113883.2.4.3.11.60.40.4.10.2 | ycN0(mol-)(sn) |
| ycN0(mol+) | ycN0(mol+) | N_Regionale Lymfeklieren | 2.16.840.1.113883.2.4.3.11.60.40.4.10.2 | ycN0(mol+) |
| ycN0(mol+)(sn) | ycN0(mol+)(sn) | N_Regionale Lymfeklieren | 2.16.840.1.113883.2.4.3.11.60.40.4.10.2 | ycN0(mol+)(sn) |
| ycN1 | ycN1 | N_Regionale Lymfeklieren | 2.16.840.1.113883.2.4.3.11.60.40.4.10.2 | ycN1 |
| ycN1(f) | ycN1(f) | N_Regionale Lymfeklieren | 2.16.840.1.113883.2.4.3.11.60.40.4.10.2 | ycN1(f) |
| ycN1(sn) | ycN1(sn) | N_Regionale Lymfeklieren | 2.16.840.1.113883.2.4.3.11.60.40.4.10.2 | ycN1(sn) |
| ycN1mi | ycN1mi | N_Regionale Lymfeklieren | 2.16.840.1.113883.2.4.3.11.60.40.4.10.2 | ycN1mi |
| ycN1mi(f) | ycN1mi(f) | N_Regionale Lymfeklieren | 2.16.840.1.113883.2.4.3.11.60.40.4.10.2 | ycN1mi(f) |
| ycN1mi(sn) | ycN1mi(sn) | N_Regionale Lymfeklieren | 2.16.840.1.113883.2.4.3.11.60.40.4.10.2 | ycN1mi(sn) |
| ycN1a | ycN1a | N_Regionale Lymfeklieren | 2.16.840.1.113883.2.4.3.11.60.40.4.10.2 | ycN1a |
| ycN1a(f) | ycN1a(f) | N_Regionale Lymfeklieren | 2.16.840.1.113883.2.4.3.11.60.40.4.10.2 | ycN1a(f) |
| ycN1a(sn) | ycN1a(sn) | N_Regionale Lymfeklieren | 2.16.840.1.113883.2.4.3.11.60.40.4.10.2 | ycN1a(sn) |
| ycN1b | ycN1b | N_Regionale Lymfeklieren | 2.16.840.1.113883.2.4.3.11.60.40.4.10.2 | ycN1b |
| ycN1b(f) | ycN1b(f) | N_Regionale Lymfeklieren | 2.16.840.1.113883.2.4.3.11.60.40.4.10.2 | ycN1b(f) |
| ycN1b(sn) | ycN1b(sn) | N_Regionale Lymfeklieren | 2.16.840.1.113883.2.4.3.11.60.40.4.10.2 | ycN1b(sn) |
| ycN1c | ycN1c | N_Regionale Lymfeklieren | 2.16.840.1.113883.2.4.3.11.60.40.4.10.2 | ycN1c |
| ycN1c(f) | ycN1c(f) | N_Regionale Lymfeklieren | 2.16.840.1.113883.2.4.3.11.60.40.4.10.2 | ycN1c(f) |
| ycN1c(sn) | ycN1c(sn) | N_Regionale Lymfeklieren | 2.16.840.1.113883.2.4.3.11.60.40.4.10.2 | ycN1c(sn) |
| ycN2 | ycN2 | N_Regionale Lymfeklieren | 2.16.840.1.113883.2.4.3.11.60.40.4.10.2 | ycN2 |

| | | | | |
|-----------|-----------|--------------------------|---|-----------|
| | | Lymfeklieren | | |
| ycN2b | ycN2b | N_Regionale Lymfeklieren | 2.16.840.1.113883.2.4.3.11.60.40.4.10.2 | ycN2b |
| ycN2b(f) | ycN2b(f) | N_Regionale Lymfeklieren | 2.16.840.1.113883.2.4.3.11.60.40.4.10.2 | ycN2b(f) |
| ycN2b(sn) | ycN2b(sn) | N_Regionale Lymfeklieren | 2.16.840.1.113883.2.4.3.11.60.40.4.10.2 | ycN2b(sn) |
| ycN2c | ycN2c | N_Regionale Lymfeklieren | 2.16.840.1.113883.2.4.3.11.60.40.4.10.2 | ycN2c |
| ycN2c(f) | ycN2c(f) | N_Regionale Lymfeklieren | 2.16.840.1.113883.2.4.3.11.60.40.4.10.2 | ycN2c(f) |
| ycN2c(sn) | ycN2c(sn) | N_Regionale Lymfeklieren | 2.16.840.1.113883.2.4.3.11.60.40.4.10.2 | ycN2c(sn) |
| ycN3 | ycN3 | N_Regionale Lymfeklieren | 2.16.840.1.113883.2.4.3.11.60.40.4.10.2 | ycN3 |
| ycN3(f) | ycN3(f) | N_Regionale Lymfeklieren | 2.16.840.1.113883.2.4.3.11.60.40.4.10.2 | ycN3(f) |
| ycN3(sn) | ycN3(sn) | N_Regionale Lymfeklieren | 2.16.840.1.113883.2.4.3.11.60.40.4.10.2 | ycN3(sn) |
| ycN3a | ycN3a | N_Regionale Lymfeklieren | 2.16.840.1.113883.2.4.3.11.60.40.4.10.2 | ycN3a |
| ycN3a(f) | ycN3a(f) | N_Regionale Lymfeklieren | 2.16.840.1.113883.2.4.3.11.60.40.4.10.2 | ycN3a(f) |
| ycN3a(sn) | ycN3a(sn) | N_Regionale Lymfeklieren | 2.16.840.1.113883.2.4.3.11.60.40.4.10.2 | ycN3a(sn) |
| ycN3b | ycN3b | N_Regionale Lymfeklieren | 2.16.840.1.113883.2.4.3.11.60.40.4.10.2 | ycN3b |
| ycN3b(f) | ycN3b(f) | N_Regionale Lymfeklieren | 2.16.840.1.113883.2.4.3.11.60.40.4.10.2 | ycN3b(f) |
| ycN3b(sn) | ycN3b(sn) | N_Regionale Lymfeklieren | 2.16.840.1.113883.2.4.3.11.60.40.4.10.2 | ycN3b(sn) |
| ycN3c | ycN3c | N_Regionale Lymfeklieren | 2.16.840.1.113883.2.4.3.11.60.40.4.10.2 | ycN3c |
| ycN3c(f) | ycN3c(f) | N_Regionale Lymfeklieren | 2.16.840.1.113883.2.4.3.11.60.40.4.10.2 | ycN3c(f) |
| ycN3c(sn) | ycN3c(sn) | N_Regionale Lymfeklieren | 2.16.840.1.113883.2.4.3.11.60.40.4.10.2 | ycN3c(sn) |

| «document» | pN_RegionalLymphnodesCodelist | |
|-----------------------------|--|--|
| Definitie | De uitbreiding naar regionale lymfeklieren (N) voor een postchirurgisch histologische pathologische classificatie. Dit is gebaseerd op de gegevens van voor de behandeling, aangevuld met pathologisch onderzoek na een heelkundige behandeling. | |
| Datatype | | |
| DCM::ValueSetBinding | Extensible | |
| DCM::ValueSetId | 2.16.840.1.113883.2.4.3.11.60.40.2.4.27.20 | |

| | | | | |
|---------------|---------------|--------------------------|---|---------------|
| pNX(sn) | pNX(sn) | N_Regionale Lymfeklieren | 2.16.840.1.113883.2.4.3.11.60.40.4.10.2 | pNX(sn) |
| pNO | pNO | N_Regionale Lymfeklieren | 2.16.840.1.113883.2.4.3.11.60.40.4.10.2 | pNO |
| pNO(f) | pNO(f) | N_Regionale Lymfeklieren | 2.16.840.1.113883.2.4.3.11.60.40.4.10.2 | pNO(f) |
| pNO(sn) | pNO(sn) | N_Regionale Lymfeklieren | 2.16.840.1.113883.2.4.3.11.60.40.4.10.2 | pNO(sn) |
| pNO(i-) | pNO(i-) | N_Regionale Lymfeklieren | 2.16.840.1.113883.2.4.3.11.60.40.4.10.2 | pNO(i-) |
| pNO(i-)(sn) | pNO(i-)(sn) | N_Regionale Lymfeklieren | 2.16.840.1.113883.2.4.3.11.60.40.4.10.2 | pNO(i-)(sn) |
| pNO(i+) | pNO(i+) | N_Regionale Lymfeklieren | 2.16.840.1.113883.2.4.3.11.60.40.4.10.2 | pNO(i+) |
| pNO(i+)(sn) | pNO(i+)(sn) | N_Regionale Lymfeklieren | 2.16.840.1.113883.2.4.3.11.60.40.4.10.2 | pNO(i+)(sn) |
| pNO(mol-) | pNO(mol-) | N_Regionale Lymfeklieren | 2.16.840.1.113883.2.4.3.11.60.40.4.10.2 | pNO(mol-) |
| pNO(mol-)(sn) | pNO(mol-)(sn) | N_Regionale Lymfeklieren | 2.16.840.1.113883.2.4.3.11.60.40.4.10.2 | pNO(mol-)(sn) |
| pNO(mol+) | pNO(mol+) | N_Regionale Lymfeklieren | 2.16.840.1.113883.2.4.3.11.60.40.4.10.2 | pNO(mol+) |
| pNO(mol+)(sn) | pNO(mol+)(sn) | N_Regionale Lymfeklieren | 2.16.840.1.113883.2.4.3.11.60.40.4.10.2 | pNO(mol+)(sn) |
| pN1 | pN1 | N_Regionale Lymfeklieren | 2.16.840.1.113883.2.4.3.11.60.40.4.10.2 | pN1 |
| pN1(f) | pN1(f) | N_Regionale Lymfeklieren | 2.16.840.1.113883.2.4.3.11.60.40.4.10.2 | pN1(f) |
| pN1(sn) | pN1(sn) | N_Regionale Lymfeklieren | 2.16.840.1.113883.2.4.3.11.60.40.4.10.2 | pN1(sn) |
| pN1mi | pN1mi | N_Regionale Lymfeklieren | 2.16.840.1.113883.2.4.3.11.60.40.4.10.2 | pN1mi |
| pN1mi(f) | pN1mi(f) | N_Regionale Lymfeklieren | 2.16.840.1.113883.2.4.3.11.60.40.4.10.2 | pN1mi(f) |
| pN1mi(sn) | pN1mi(sn) | N_Regionale Lymfeklieren | 2.16.840.1.113883.2.4.3.11.60.40.4.10.2 | pN1mi(sn) |
| pN1a | pN1a | N_Regionale Lymfeklieren | 2.16.840.1.113883.2.4.3.11.60.40.4.10.2 | pN1a |
| pN1a(f) | pN1a(f) | N_Regionale Lymfeklieren | 2.16.840.1.113883.2.4.3.11.60.40.4.10.2 | pN1a(f) |
| pN1a(sn) | pN1a(sn) | N_Regionale Lymfeklieren | 2.16.840.1.113883.2.4.3.11.60.40.4.10.2 | pN1a(sn) |
| pN1b | pN1b | N_Regionale Lymfeklieren | 2.16.840.1.113883.2.4.3.11.60.40.4.10.2 | pN1b |
| pN1b(f) | pN1b(f) | N_Regionale Lymfeklieren | 2.16.840.1.113883.2.4.3.11.60.40.4.10.2 | pN1b(f) |
| pN1b(sn) | pN1b(sn) | N_Regionale Lymfeklieren | 2.16.840.1.113883.2.4.3.11.60.40.4.10.2 | pN1b(sn) |
| | | N_Regionale Lymfeklieren | 2.16.840.1.113883.2.4.3.11.60.40.4.10.2 | |

| | | | | |
|----------|----------|-----------------------------|---|----------|
| pN2(sn) | pN2(sn) | N_Regionale Lymfeklieren | 2.16.840.1.113883.2.4.3.11.60.40.4.10.2 | pN2(sn) |
| pN2a | pN2a | N_Regionale Lymfeklieren | 2.16.840.1.113883.2.4.3.11.60.40.4.10.2 | pN2a |
| pN2a(f) | pN2a(f) | N_Regionale Lymfeklieren | 2.16.840.1.113883.2.4.3.11.60.40.4.10.2 | pN2a(f) |
| pN2a(sn) | pN2a(sn) | N_Regionale Lymfeklieren | 2.16.840.1.113883.2.4.3.11.60.40.4.10.2 | pN2a(sn) |
| pN2b | pN2b | N_Regionale Lymfeklieren | 2.16.840.1.113883.2.4.3.11.60.40.4.10.2 | pN2b |
| pN2b(f) | pN2b(f) | N_Regionale Lymfeklieren | 2.16.840.1.113883.2.4.3.11.60.40.4.10.2 | pN2b(f) |
| pN2b(sn) | pN2b(sn) | N_Regionale Lymfeklieren | 2.16.840.1.113883.2.4.3.11.60.40.4.10.2 | pN2b(sn) |
| pN2c | pN2c | N_Regionale Lymfeklieren | 2.16.840.1.113883.2.4.3.11.60.40.4.10.2 | pN2c |
| pN2c(f) | pN2c(f) | N_Regionale Lymfeklieren | 2.16.840.1.113883.2.4.3.11.60.40.4.10.2 | pN2c(f) |
| pN2c(sn) | pN2c(sn) | N_Regionale Lymfeklieren | 2.16.840.1.113883.2.4.3.11.60.40.4.10.2 | pN2c(sn) |
| pN3 | pN3 | N_Regionale Lymfeklieren | 2.16.840.1.113883.2.4.3.11.60.40.4.10.2 | pN3 |
| pN3(f) | pN3(f) | N_Regionale Lymfeklieren | 2.16.840.1.113883.2.4.3.11.60.40.4.10.2 | pN3(f) |
| pN3(sn) | pN3(sn) | N_Regionale Lymfeklieren | 2.16.840.1.113883.2.4.3.11.60.40.4.10.2 | pN3(sn) |
| pN3a | pN3a | N_Regionale Lymfeklieren | 2.16.840.1.113883.2.4.3.11.60.40.4.10.2 | pN3a |
| pN3a(f) | pN3a(f) | N_Regionale Lymfeklieren | 2.16.840.1.113883.2.4.3.11.60.40.4.10.2 | pN3a(f) |
| pN3a(sn) | pN3a(sn) | N_Regionale Lymfeklieren | 2.16.840.1.113883.2.4.3.11.60.40.4.10.2 | pN3a(sn) |
| pN3b | pN3b | N_Regionale Lymfeklieren | 2.16.840.1.113883.2.4.3.11.60.40.4.10.2 | pN3b |
| pN3b(f) | pN3b(f) | N_Regionale Lymfeklieren | 2.16.840.1.113883.2.4.3.11.60.40.4.10.2 | pN3b(f) |
| pN3b(sn) | pN3b(sn) | N_Regionale Lymfeklieren | 2.16.840.1.113883.2.4.3.11.60.40.4.10.2 | pN3b(sn) |
| pN3c | pN3c | N_Regionale Lymfeklieren | 2.16.840.1.113883.2.4.3.11.60.40.4.10.2 | pN3c |
| pN3c(f) | pN3c(f) | N_Regionale Lymfeklieren | 2.16.840.1.113883.2.4.3.11.60.40.4.10.2 | pN3c(f) |
| pN3c(sn) | pN3c(sn) | N_Regionale Lymfeklieren | 2.16.840.1.113883.2.4.3.11.60.40.4.10.2 | pN3c(sn) |

ypN_RegionaleLymfeklierenCodelijst **OID: 2.16.840.1.113883.2.4.3.11.60.40.2.4.27.**

| Concept Name | Concept Code | Coding System Name | Coding System OID | Description |
|---------------------|---------------------|---------------------------|---|--------------------|
| ypNX | ypNX | N_Regionale Lymfeklieren | 2.16.840.1.113883.2.4.3.11.60.40.4.10.2 | ypNX |
| ypNX(f) | ypNX(f) | N_Regionale Lymfeklieren | 2.16.840.1.113883.2.4.3.11.60.40.4.10.2 | ypNX(f) |
| ypNX(sn) | ypNX(sn) | N_Regionale Lymfeklieren | 2.16.840.1.113883.2.4.3.11.60.40.4.10.2 | ypNX(sn) |
| ypNO | ypNO | N_Regionale Lymfeklieren | 2.16.840.1.113883.2.4.3.11.60.40.4.10.2 | ypNO |
| ypNO(f) | ypNO(f) | N_Regionale Lymfeklieren | 2.16.840.1.113883.2.4.3.11.60.40.4.10.2 | ypNO(f) |
| ypNO(sn) | ypNO(sn) | N_Regionale Lymfeklieren | 2.16.840.1.113883.2.4.3.11.60.40.4.10.2 | ypNO(sn) |
| ypNO(i-) | ypNO(i-) | N_Regionale Lymfeklieren | 2.16.840.1.113883.2.4.3.11.60.40.4.10.2 | ypNO(i-) |
| ypNO(i-)(sn) | ypNO(i-)(sn) | N_Regionale Lymfeklieren | 2.16.840.1.113883.2.4.3.11.60.40.4.10.2 | ypNO(i-)(sn) |
| ypNO(i+) | ypNO(i+) | N_Regionale Lymfeklieren | 2.16.840.1.113883.2.4.3.11.60.40.4.10.2 | ypNO(i+) |
| ypNO(i+)(sn) | ypNO(i+)(sn) | N_Regionale Lymfeklieren | 2.16.840.1.113883.2.4.3.11.60.40.4.10.2 | ypNO(i+)(sn) |
| ypNO(mol-) | ypNO(mol-) | N_Regionale Lymfeklieren | 2.16.840.1.113883.2.4.3.11.60.40.4.10.2 | ypNO(mol-) |
| ypNO(mol-)(sn) | ypNO(mol-)(sn) | N_Regionale Lymfeklieren | 2.16.840.1.113883.2.4.3.11.60.40.4.10.2 | ypNO(mol-)(sn) |
| ypNO(mol+) | ypNO(mol+) | N_Regionale Lymfeklieren | 2.16.840.1.113883.2.4.3.11.60.40.4.10.2 | ypNO(mol+) |
| ypNO(mol+)(sn) | ypNO(mol+)(sn) | N_Regionale Lymfeklieren | 2.16.840.1.113883.2.4.3.11.60.40.4.10.2 | ypNO(mol+)(sn) |
| ypN1 | ypN1 | N_Regionale Lymfeklieren | 2.16.840.1.113883.2.4.3.11.60.40.4.10.2 | ypN1 |
| ypN1(f) | ypN1(f) | N_Regionale Lymfeklieren | 2.16.840.1.113883.2.4.3.11.60.40.4.10.2 | ypN1(f) |
| ypN1(sn) | ypN1(sn) | N_Regionale Lymfeklieren | 2.16.840.1.113883.2.4.3.11.60.40.4.10.2 | ypN1(sn) |
| ypN1mi | ypN1mi | N_Regionale Lymfeklieren | 2.16.840.1.113883.2.4.3.11.60.40.4.10.2 | ypN1mi |
| ypN1mi(f) | ypN1mi(f) | N_Regionale Lymfeklieren | 2.16.840.1.113883.2.4.3.11.60.40.4.10.2 | ypN1mi(f) |
| ypN1mi(sn) | ypN1mi(sn) | N_Regionale Lymfeklieren | 2.16.840.1.113883.2.4.3.11.60.40.4.10.2 | ypN1mi(sn) |
| ypN1a | ypN1a | N_Regionale Lymfeklieren | 2.16.840.1.113883.2.4.3.11.60.40.4.10.2 | ypN1a |
| ypN1a(f) | ypN1a(f) | N_Regionale Lymfeklieren | 2.16.840.1.113883.2.4.3.11.60.40.4.10.2 | ypN1a(f) |

| | | | | |
|-----------|-----------|--------------------------|---|-----------|
| | | Lymfeklieren | | |
| ypN1c(f) | ypN1c(f) | N_Regionale Lymfeklieren | 2.16.840.1.113883.2.4.3.11.60.40.4.10.2 | ypN1c(f) |
| ypN1c(sn) | ypN1c(sn) | N_Regionale Lymfeklieren | 2.16.840.1.113883.2.4.3.11.60.40.4.10.2 | ypN1c(sn) |
| ypN2 | ypN2 | N_Regionale Lymfeklieren | 2.16.840.1.113883.2.4.3.11.60.40.4.10.2 | ypN2 |
| ypN2(f) | ypN2(f) | N_Regionale Lymfeklieren | 2.16.840.1.113883.2.4.3.11.60.40.4.10.2 | ypN2(f) |
| ypN2(sn) | ypN2(sn) | N_Regionale Lymfeklieren | 2.16.840.1.113883.2.4.3.11.60.40.4.10.2 | ypN2(sn) |
| ypN2a | ypN2a | N_Regionale Lymfeklieren | 2.16.840.1.113883.2.4.3.11.60.40.4.10.2 | ypN2a |
| ypN2a(f) | ypN2a(f) | N_Regionale Lymfeklieren | 2.16.840.1.113883.2.4.3.11.60.40.4.10.2 | ypN2a(f) |
| ypN2a(sn) | ypN2a(sn) | N_Regionale Lymfeklieren | 2.16.840.1.113883.2.4.3.11.60.40.4.10.2 | ypN2a(sn) |
| ypN2b | ypN2b | N_Regionale Lymfeklieren | 2.16.840.1.113883.2.4.3.11.60.40.4.10.2 | ypN2b |
| ypN2b(f) | ypN2b(f) | N_Regionale Lymfeklieren | 2.16.840.1.113883.2.4.3.11.60.40.4.10.2 | ypN2b(f) |
| ypN2b(sn) | ypN2b(sn) | N_Regionale Lymfeklieren | 2.16.840.1.113883.2.4.3.11.60.40.4.10.2 | ypN2b(sn) |
| ypN2c | ypN2c | N_Regionale Lymfeklieren | 2.16.840.1.113883.2.4.3.11.60.40.4.10.2 | ypN2c |
| ypN2c(f) | ypN2c(f) | N_Regionale Lymfeklieren | 2.16.840.1.113883.2.4.3.11.60.40.4.10.2 | ypN2c(f) |
| ypN2c(sn) | ypN2c(sn) | N_Regionale Lymfeklieren | 2.16.840.1.113883.2.4.3.11.60.40.4.10.2 | ypN2c(sn) |
| ypN3 | ypN3 | N_Regionale Lymfeklieren | 2.16.840.1.113883.2.4.3.11.60.40.4.10.2 | ypN3 |
| ypN3(f) | ypN3(f) | N_Regionale Lymfeklieren | 2.16.840.1.113883.2.4.3.11.60.40.4.10.2 | ypN3(f) |
| ypN3(sn) | ypN3(sn) | N_Regionale Lymfeklieren | 2.16.840.1.113883.2.4.3.11.60.40.4.10.2 | ypN3(sn) |
| ypN3a | ypN3a | N_Regionale Lymfeklieren | 2.16.840.1.113883.2.4.3.11.60.40.4.10.2 | ypN3a |
| ypN3a(f) | ypN3a(f) | N_Regionale Lymfeklieren | 2.16.840.1.113883.2.4.3.11.60.40.4.10.2 | ypN3a(f) |
| ypN3a(sn) | ypN3a(sn) | N_Regionale Lymfeklieren | 2.16.840.1.113883.2.4.3.11.60.40.4.10.2 | ypN3a(sn) |
| ypN3b | ypN3b | N_Regionale Lymfeklieren | 2.16.840.1.113883.2.4.3.11.60.40.4.10.2 | ypN3b |
| ypN3b(f) | ypN3b(f) | N_Regionale Lymfeklieren | 2.16.840.1.113883.2.4.3.11.60.40.4.10.2 | ypN3b(f) |
| ypN3b(sn) | ypN3b(sn) | N_Regionale Lymfeklieren | 2.16.840.1.113883.2.4.3.11.60.40.4.10.2 | ypN3b(sn) |
| ypN3c | ypN3c | N_Regionale Lymfeklieren | 2.16.840.1.113883.2.4.3.11.60.40.4.10.2 | ypN3c |

| | | |
|-----------------------------|--|--|
| «document» | rcN_RegionalLymphnodesCodelist | |
| Definitie | De uitbreiding naar regionale lymfeklieren (N) voor een klinische classificatie in geval van een recidiverende tumor (na een ziektevrij interval). | |
| Datatype | | |
| DCM::ValueSetBinding | Extensible | |
| DCM::ValueSetId | 2.16.840.1.113883.2.4.3.11.60.40.2.4.27.22 | |
| Opties | | |

| | |
|---|--|
| rcN_RegionaleLymfeklierenCodelijst | OID: 2.16.840.1.113883.2.4.3.11.60.40.2.4.27.22 |
|---|--|

| Concept Name | Concept Code | Coding System Name | Coding System OID | Description |
|---------------------|---------------------|---------------------------|---|--------------------|
| rcNX | rcNX | N_Regionale Lymfeklieren | 2.16.840.1.113883.2.4.3.11.60.40.4.10.2 | rcNX |
| rcNX(f) | rcNX(f) | N_Regionale Lymfeklieren | 2.16.840.1.113883.2.4.3.11.60.40.4.10.2 | rcNX(f) |
| rcNX(sn) | rcNX(sn) | N_Regionale Lymfeklieren | 2.16.840.1.113883.2.4.3.11.60.40.4.10.2 | rcNX(sn) |
| rcNO | rcNO | N_Regionale Lymfeklieren | 2.16.840.1.113883.2.4.3.11.60.40.4.10.2 | rcNO |
| rcNO(f) | rcNO(f) | N_Regionale Lymfeklieren | 2.16.840.1.113883.2.4.3.11.60.40.4.10.2 | rcNO(f) |
| rcNO(sn) | rcNO(sn) | N_Regionale Lymfeklieren | 2.16.840.1.113883.2.4.3.11.60.40.4.10.2 | rcNO(sn) |
| rcNO(i-) | rcNO(i-) | N_Regionale Lymfeklieren | 2.16.840.1.113883.2.4.3.11.60.40.4.10.2 | rcNO(i-) |
| rcNO(i-)(sn) | rcNO(i-)(sn) | N_Regionale Lymfeklieren | 2.16.840.1.113883.2.4.3.11.60.40.4.10.2 | rcNO(i-)(sn) |
| rcNO(i+) | rcNO(i+) | N_Regionale Lymfeklieren | 2.16.840.1.113883.2.4.3.11.60.40.4.10.2 | rcNO(i+) |
| rcNO(i+)(sn) | rcNO(i+)(sn) | N_Regionale Lymfeklieren | 2.16.840.1.113883.2.4.3.11.60.40.4.10.2 | rcNO(i+)(sn) |
| rcNO(mol-) | rcNO(mol-) | N_Regionale Lymfeklieren | 2.16.840.1.113883.2.4.3.11.60.40.4.10.2 | rcNO(mol-) |
| rcNO(mol-)(sn) | rcNO(mol-)(sn) | N_Regionale Lymfeklieren | 2.16.840.1.113883.2.4.3.11.60.40.4.10.2 | rcNO(mol-)(sn) |
| rcNO(mol+) | rcNO(mol+) | N_Regionale Lymfeklieren | 2.16.840.1.113883.2.4.3.11.60.40.4.10.2 | rcNO(mol+) |
| rcNO(mol+)(sn) | rcNO(mol+)(sn) | N_Regionale Lymfeklieren | 2.16.840.1.113883.2.4.3.11.60.40.4.10.2 | rcNO(mol+)(sn) |
| rcN1 | rcN1 | N_Regionale Lymfeklieren | 2.16.840.1.113883.2.4.3.11.60.40.4.10.2 | rcN1 |
| rcN1(f) | rcN1(f) | N_Regionale Lymfeklieren | 2.16.840.1.113883.2.4.3.11.60.40.4.10.2 | rcN1(f) |
| rcN1(sn) | rcN1(sn) | N_Regionale Lymfeklieren | 2.16.840.1.113883.2.4.3.11.60.40.4.10.2 | rcN1(sn) |

| | | | | |
|-----------|-----------|--------------------------|---|-----------|
| rcN1a(sn) | rcN1a(sn) | N_Regionale Lymfeklieren | 2.16.840.1.113883.2.4.3.11.60.40.4.10.2 | rcN1a(sn) |
| rcN1b | rcN1b | N_Regionale Lymfeklieren | 2.16.840.1.113883.2.4.3.11.60.40.4.10.2 | rcN1b |
| rcN1b(f) | rcN1b(f) | N_Regionale Lymfeklieren | 2.16.840.1.113883.2.4.3.11.60.40.4.10.2 | rcN1b(f) |
| rcN1b(sn) | rcN1b(sn) | N_Regionale Lymfeklieren | 2.16.840.1.113883.2.4.3.11.60.40.4.10.2 | rcN1b(sn) |
| rcN1c | rcN1c | N_Regionale Lymfeklieren | 2.16.840.1.113883.2.4.3.11.60.40.4.10.2 | rcN1c |
| rcN1c(f) | rcN1c(f) | N_Regionale Lymfeklieren | 2.16.840.1.113883.2.4.3.11.60.40.4.10.2 | rcN1c(f) |
| rcN1c(sn) | rcN1c(sn) | N_Regionale Lymfeklieren | 2.16.840.1.113883.2.4.3.11.60.40.4.10.2 | rcN1c(sn) |
| rcN2 | rcN2 | N_Regionale Lymfeklieren | 2.16.840.1.113883.2.4.3.11.60.40.4.10.2 | rcN2 |
| rcN2(f) | rcN2(f) | N_Regionale Lymfeklieren | 2.16.840.1.113883.2.4.3.11.60.40.4.10.2 | rcN2(f) |
| rcN2(sn) | rcN2(sn) | N_Regionale Lymfeklieren | 2.16.840.1.113883.2.4.3.11.60.40.4.10.2 | rcN2(sn) |
| rcN2a | rcN2a | N_Regionale Lymfeklieren | 2.16.840.1.113883.2.4.3.11.60.40.4.10.2 | rcN2a |
| rcN2a(f) | rcN2a(f) | N_Regionale Lymfeklieren | 2.16.840.1.113883.2.4.3.11.60.40.4.10.2 | rcN2a(f) |
| rcN2a(sn) | rcN2a(sn) | N_Regionale Lymfeklieren | 2.16.840.1.113883.2.4.3.11.60.40.4.10.2 | rcN2a(sn) |
| rcN2b | rcN2b | N_Regionale Lymfeklieren | 2.16.840.1.113883.2.4.3.11.60.40.4.10.2 | rcN2b |
| rcN2b(f) | rcN2b(f) | N_Regionale Lymfeklieren | 2.16.840.1.113883.2.4.3.11.60.40.4.10.2 | rcN2b(f) |
| rcN2b(sn) | rcN2b(sn) | N_Regionale Lymfeklieren | 2.16.840.1.113883.2.4.3.11.60.40.4.10.2 | rcN2b(sn) |
| rcN2c | rcN2c | N_Regionale Lymfeklieren | 2.16.840.1.113883.2.4.3.11.60.40.4.10.2 | rcN2c |
| rcN2c(f) | rcN2c(f) | N_Regionale Lymfeklieren | 2.16.840.1.113883.2.4.3.11.60.40.4.10.2 | rcN2c(f) |
| rcN2c(sn) | rcN2c(sn) | N_Regionale Lymfeklieren | 2.16.840.1.113883.2.4.3.11.60.40.4.10.2 | rcN2c(sn) |
| rcN3 | rcN3 | N_Regionale Lymfeklieren | 2.16.840.1.113883.2.4.3.11.60.40.4.10.2 | rcN3 |
| rcN3(f) | rcN3(f) | N_Regionale Lymfeklieren | 2.16.840.1.113883.2.4.3.11.60.40.4.10.2 | rcN3(f) |
| rcN3(sn) | rcN3(sn) | N_Regionale Lymfeklieren | 2.16.840.1.113883.2.4.3.11.60.40.4.10.2 | rcN3(sn) |
| rcN3a | rcN3a | N_Regionale Lymfeklieren | 2.16.840.1.113883.2.4.3.11.60.40.4.10.2 | rcN3a |
| rcN3a(f) | rcN3a(f) | N_Regionale Lymfeklieren | 2.16.840.1.113883.2.4.3.11.60.40.4.10.2 | rcN3a(f) |
| rcN3a(sn) | rcN3a(sn) | N_Regionale Lymfeklieren | 2.16.840.1.113883.2.4.3.11.60.40.4.10.2 | rcN3a(sn) |

| | | | | |
|-----------|-----------|--------------------------|---|-----------|
| rcN3c(f) | rcN3c(f) | N_Regionale Lymfeklieren | 2.16.840.1.113883.2.4.3.11.60.40.4.10.2 | rcN3c(f) |
| rcN3c(sn) | rcN3c(sn) | N_Regionale Lymfeklieren | 2.16.840.1.113883.2.4.3.11.60.40.4.10.2 | rcN3c(sn) |

| «document» | | rpN_RegionalLymphnodesCodelist | | |
|-----------------------------|---|--------------------------------|--|--|
| Definitie | De uitbreiding naar regionale lymfeklieren (N) voor een postchirurgische pathologische classificatie in geval van een recidiverende tumor (na een ziektevrij interval). | | | |
| Datatype | | | | |
| DCM::ValueSetBinding | Extensible | | | |
| DCM::ValueSetId | 2.16.840.1.113883.2.4.3.11.60.40.2.4.27.23 | | | |
| Opties | | | | |

| rpN_RegionaleLymfeklierenCodelijst | | OID: 2.16.840.1.113883.2.4.3.11.60.40.2.4.27.23 | | |
|------------------------------------|--|---|--|--|
|------------------------------------|--|---|--|--|

| Concept Name | Concept Code | Coding System Name | Coding System OID | Description |
|----------------|----------------|--------------------------|---|----------------|
| rpNX | rpNX | N_Regionale Lymfeklieren | 2.16.840.1.113883.2.4.3.11.60.40.4.10.2 | rpNX |
| rpNX(f) | rpNX(f) | N_Regionale Lymfeklieren | 2.16.840.1.113883.2.4.3.11.60.40.4.10.2 | rpNX(f) |
| rpNX(sn) | rpNX(sn) | N_Regionale Lymfeklieren | 2.16.840.1.113883.2.4.3.11.60.40.4.10.2 | rpNX(sn) |
| rpNO | rpNO | N_Regionale Lymfeklieren | 2.16.840.1.113883.2.4.3.11.60.40.4.10.2 | rpNO |
| rpNO(f) | rpNO(f) | N_Regionale Lymfeklieren | 2.16.840.1.113883.2.4.3.11.60.40.4.10.2 | rpNO(f) |
| rpNO(sn) | rpNO(sn) | N_Regionale Lymfeklieren | 2.16.840.1.113883.2.4.3.11.60.40.4.10.2 | rpNO(sn) |
| rpNO(i-) | rpNO(i-) | N_Regionale Lymfeklieren | 2.16.840.1.113883.2.4.3.11.60.40.4.10.2 | rpNO(i-) |
| rpNO(i-)(sn) | rpNO(i-)(sn) | N_Regionale Lymfeklieren | 2.16.840.1.113883.2.4.3.11.60.40.4.10.2 | rpNO(i-)(sn) |
| rpNO(i+) | rpNO(i+) | N_Regionale Lymfeklieren | 2.16.840.1.113883.2.4.3.11.60.40.4.10.2 | rpNO(i+) |
| rpNO(i+)(sn) | rpNO(i+)(sn) | N_Regionale Lymfeklieren | 2.16.840.1.113883.2.4.3.11.60.40.4.10.2 | rpNO(i+)(sn) |
| rpNO(mol-) | rpNO(mol-) | N_Regionale Lymfeklieren | 2.16.840.1.113883.2.4.3.11.60.40.4.10.2 | rpNO(mol-) |
| rpNO(mol-)(sn) | rpNO(mol-)(sn) | N_Regionale Lymfeklieren | 2.16.840.1.113883.2.4.3.11.60.40.4.10.2 | rpNO(mol-)(sn) |
| rpNO(mol+) | rpNO(mol+) | N_Regionale Lymfeklieren | 2.16.840.1.113883.2.4.3.11.60.40.4.10.2 | rpNO(mol+) |
| rpNO(mol+)(sn) | rpNO(mol+)(sn) | N_Regionale Lymfeklieren | 2.16.840.1.113883.2.4.3.11.60.40.4.10.2 | rpNO(mol+)(sn) |

| | | | | |
|------------|------------|--------------------------|---|------------|
| | | Lymfeklieren | | |
| rpN1mi(sn) | rpN1mi(sn) | N_Regionale Lymfeklieren | 2.16.840.1.113883.2.4.3.11.60.40.4.10.2 | rpN1mi(sn) |
| rpN1a | rpN1a | N_Regionale Lymfeklieren | 2.16.840.1.113883.2.4.3.11.60.40.4.10.2 | rpN1a |
| rpN1a(f) | rpN1a(f) | N_Regionale Lymfeklieren | 2.16.840.1.113883.2.4.3.11.60.40.4.10.2 | rpN1a(f) |
| rpN1a(sn) | rpN1a(sn) | N_Regionale Lymfeklieren | 2.16.840.1.113883.2.4.3.11.60.40.4.10.2 | rpN1a(sn) |
| rpN1b | rpN1b | N_Regionale Lymfeklieren | 2.16.840.1.113883.2.4.3.11.60.40.4.10.2 | rpN1b |
| rpN1b(f) | rpN1b(f) | N_Regionale Lymfeklieren | 2.16.840.1.113883.2.4.3.11.60.40.4.10.2 | rpN1b(f) |
| rpN1b(sn) | rpN1b(sn) | N_Regionale Lymfeklieren | 2.16.840.1.113883.2.4.3.11.60.40.4.10.2 | rpN1b(sn) |
| rpN1c | rpN1c | N_Regionale Lymfeklieren | 2.16.840.1.113883.2.4.3.11.60.40.4.10.2 | rpN1c |
| rpN1c(f) | rpN1c(f) | N_Regionale Lymfeklieren | 2.16.840.1.113883.2.4.3.11.60.40.4.10.2 | rpN1c(f) |
| rpN1c(sn) | rpN1c(sn) | N_Regionale Lymfeklieren | 2.16.840.1.113883.2.4.3.11.60.40.4.10.2 | rpN1c(sn) |
| rpN2 | rpN2 | N_Regionale Lymfeklieren | 2.16.840.1.113883.2.4.3.11.60.40.4.10.2 | rpN2 |
| rpN2(f) | rpN2(f) | N_Regionale Lymfeklieren | 2.16.840.1.113883.2.4.3.11.60.40.4.10.2 | rpN2(f) |
| rpN2(sn) | rpN2(sn) | N_Regionale Lymfeklieren | 2.16.840.1.113883.2.4.3.11.60.40.4.10.2 | rpN2(sn) |
| rpN2a | rpN2a | N_Regionale Lymfeklieren | 2.16.840.1.113883.2.4.3.11.60.40.4.10.2 | rpN2a |
| rpN2a(f) | rpN2a(f) | N_Regionale Lymfeklieren | 2.16.840.1.113883.2.4.3.11.60.40.4.10.2 | rpN2a(f) |
| rpN2a(sn) | rpN2a(sn) | N_Regionale Lymfeklieren | 2.16.840.1.113883.2.4.3.11.60.40.4.10.2 | rpN2a(sn) |
| rpN2b | rpN2b | N_Regionale Lymfeklieren | 2.16.840.1.113883.2.4.3.11.60.40.4.10.2 | rpN2b |
| rpN2b(f) | rpN2b(f) | N_Regionale Lymfeklieren | 2.16.840.1.113883.2.4.3.11.60.40.4.10.2 | rpN2b(f) |
| rpN2b(sn) | rpN2b(sn) | N_Regionale Lymfeklieren | 2.16.840.1.113883.2.4.3.11.60.40.4.10.2 | rpN2b(sn) |
| rpN2c | rpN2c | N_Regionale Lymfeklieren | 2.16.840.1.113883.2.4.3.11.60.40.4.10.2 | rpN2c |
| rpN2c(f) | rpN2c(f) | N_Regionale Lymfeklieren | 2.16.840.1.113883.2.4.3.11.60.40.4.10.2 | rpN2c(f) |
| rpN2c(sn) | rpN2c(sn) | N_Regionale Lymfeklieren | 2.16.840.1.113883.2.4.3.11.60.40.4.10.2 | rpN2c(sn) |
| rpN3 | rpN3 | N_Regionale Lymfeklieren | 2.16.840.1.113883.2.4.3.11.60.40.4.10.2 | rpN3 |
| rpN3(f) | rpN3(f) | N_Regionale Lymfeklieren | 2.16.840.1.113883.2.4.3.11.60.40.4.10.2 | rpN3(f) |

| | | | | |
|-----------|-----------|--------------------------|---|-----------|
| | | Lymfeklieren | | |
| rpN3b(f) | rpN3b(f) | N_Regionale Lymfeklieren | 2.16.840.1.113883.2.4.3.11.60.40.4.10.2 | rpN3b(f) |
| rpN3b(sn) | rpN3b(sn) | N_Regionale Lymfeklieren | 2.16.840.1.113883.2.4.3.11.60.40.4.10.2 | rpN3b(sn) |
| rpN3c | rpN3c | N_Regionale Lymfeklieren | 2.16.840.1.113883.2.4.3.11.60.40.4.10.2 | rpN3c |
| rpN3c(f) | rpN3c(f) | N_Regionale Lymfeklieren | 2.16.840.1.113883.2.4.3.11.60.40.4.10.2 | rpN3c(f) |
| rpN3c(sn) | rpN3c(sn) | N_Regionale Lymfeklieren | 2.16.840.1.113883.2.4.3.11.60.40.4.10.2 | rpN3c(sn) |

| «document» | | aN_RegionalLymphnodesCodelist | | |
|-----------------------------|---|-------------------------------|--|--|
| Definitie | De regionale lymfeklieren (N) voor een classificatie vastgesteld tijdens autopsie | | | |
| Datatype | | | | |
| DCM::ValueSetBinding | Extensible | | | |
| DCM::ValueSetId | 2.16.840.1.113883.2.4.3.11.60.40.2.4.27.24 | | | |
| Opties | | | | |

| aN_RegionaleLymfeklierenCodelijst | | | | OID: 2.16.840.1.113883.2.4.3.11.60.40.2.4.27.24 |
|-----------------------------------|--|--|--|---|
|-----------------------------------|--|--|--|---|

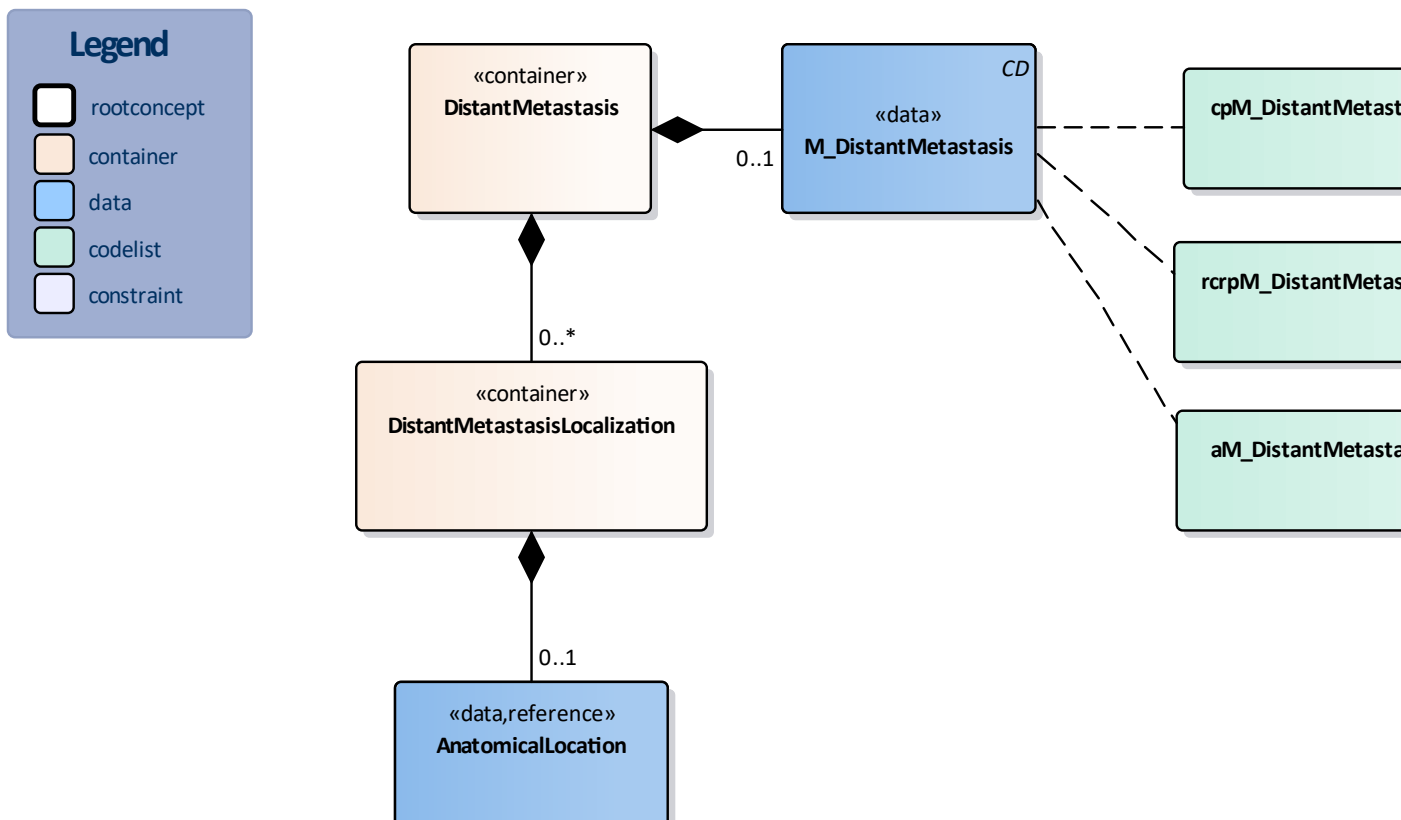
| Concept Name | Concept Code | Coding System Name | Coding System OID | Description |
|--------------|--------------|--------------------------|---|-------------|
| aNX | aNX | N_Regionale Lymfeklieren | 2.16.840.1.113883.2.4.3.11.60.40.4.10.2 | aNX |
| aNX(f) | aNX(f) | N_Regionale Lymfeklieren | 2.16.840.1.113883.2.4.3.11.60.40.4.10.2 | aNX(f) |
| aNX(sn) | aNX(sn) | N_Regionale Lymfeklieren | 2.16.840.1.113883.2.4.3.11.60.40.4.10.2 | aNX(sn) |
| aNO | aNO | N_Regionale Lymfeklieren | 2.16.840.1.113883.2.4.3.11.60.40.4.10.2 | aNO |
| aNO(f) | aNO(f) | N_Regionale Lymfeklieren | 2.16.840.1.113883.2.4.3.11.60.40.4.10.2 | aNO(f) |
| aNO(sn) | aNO(sn) | N_Regionale Lymfeklieren | 2.16.840.1.113883.2.4.3.11.60.40.4.10.2 | aNO(sn) |
| aNO(i-) | aNO(i-) | N_Regionale Lymfeklieren | 2.16.840.1.113883.2.4.3.11.60.40.4.10.2 | aNO(i-) |
| aNO(i-)(sn) | aNO(i-)(sn) | N_Regionale Lymfeklieren | 2.16.840.1.113883.2.4.3.11.60.40.4.10.2 | aNO(i-)(sn) |
| aNO(i+) | aNO(i+) | N_Regionale Lymfeklieren | 2.16.840.1.113883.2.4.3.11.60.40.4.10.2 | aNO(i+) |
| aNO(i+)(sn) | aNO(i+)(sn) | N_Regionale Lymfeklieren | 2.16.840.1.113883.2.4.3.11.60.40.4.10.2 | aNO(i+)(sn) |
| aNO(mol-) | aNO(mol-) | N_Regionale Lymfeklieren | 2.16.840.1.113883.2.4.3.11.60.40.4.10.2 | aNO(mol-) |

| | | | | |
|-----------|-----------|--------------------------|---|-----------|
| | | Lymfeklieren | | |
| aN1(sn) | aN1(sn) | N_Regionale Lymfeklieren | 2.16.840.1.113883.2.4.3.11.60.40.4.10.2 | aN1(sn) |
| aN1mi | aN1mi | N_Regionale Lymfeklieren | 2.16.840.1.113883.2.4.3.11.60.40.4.10.2 | aN1mi |
| aN1mi(f) | aN1mi(f) | N_Regionale Lymfeklieren | 2.16.840.1.113883.2.4.3.11.60.40.4.10.2 | aN1mi(f) |
| aN1mi(sn) | aN1mi(sn) | N_Regionale Lymfeklieren | 2.16.840.1.113883.2.4.3.11.60.40.4.10.2 | aN1mi(sn) |
| aN1a | aN1a | N_Regionale Lymfeklieren | 2.16.840.1.113883.2.4.3.11.60.40.4.10.2 | aN1a |
| aN1a(f) | aN1a(f) | N_Regionale Lymfeklieren | 2.16.840.1.113883.2.4.3.11.60.40.4.10.2 | aN1a(f) |
| aN1a(sn) | aN1a(sn) | N_Regionale Lymfeklieren | 2.16.840.1.113883.2.4.3.11.60.40.4.10.2 | aN1a(sn) |
| aN1b | aN1b | N_Regionale Lymfeklieren | 2.16.840.1.113883.2.4.3.11.60.40.4.10.2 | aN1b |
| aN1b(f) | aN1b(f) | N_Regionale Lymfeklieren | 2.16.840.1.113883.2.4.3.11.60.40.4.10.2 | aN1b(f) |
| aN1b(sn) | aN1b(sn) | N_Regionale Lymfeklieren | 2.16.840.1.113883.2.4.3.11.60.40.4.10.2 | aN1b(sn) |
| aN1c | aN1c | N_Regionale Lymfeklieren | 2.16.840.1.113883.2.4.3.11.60.40.4.10.2 | aN1c |
| aN1c(f) | aN1c(f) | N_Regionale Lymfeklieren | 2.16.840.1.113883.2.4.3.11.60.40.4.10.2 | aN1c(f) |
| aN1c(sn) | aN1c(sn) | N_Regionale Lymfeklieren | 2.16.840.1.113883.2.4.3.11.60.40.4.10.2 | aN1c(sn) |
| aN2 | aN2 | N_Regionale Lymfeklieren | 2.16.840.1.113883.2.4.3.11.60.40.4.10.2 | aN2 |
| aN2(f) | aN2(f) | N_Regionale Lymfeklieren | 2.16.840.1.113883.2.4.3.11.60.40.4.10.2 | aN2(f) |
| aN2(sn) | aN2(sn) | N_Regionale Lymfeklieren | 2.16.840.1.113883.2.4.3.11.60.40.4.10.2 | aN2(sn) |
| aN2a | aN2a | N_Regionale Lymfeklieren | 2.16.840.1.113883.2.4.3.11.60.40.4.10.2 | aN2a |
| aN2a(f) | aN2a(f) | N_Regionale Lymfeklieren | 2.16.840.1.113883.2.4.3.11.60.40.4.10.2 | aN2a(f) |
| aN2a(sn) | aN2a(sn) | N_Regionale Lymfeklieren | 2.16.840.1.113883.2.4.3.11.60.40.4.10.2 | aN2a(sn) |
| aN2b | aN2b | N_Regionale Lymfeklieren | 2.16.840.1.113883.2.4.3.11.60.40.4.10.2 | aN2b |
| aN2b(f) | aN2b(f) | N_Regionale Lymfeklieren | 2.16.840.1.113883.2.4.3.11.60.40.4.10.2 | aN2b(f) |
| aN2b(sn) | aN2b(sn) | N_Regionale Lymfeklieren | 2.16.840.1.113883.2.4.3.11.60.40.4.10.2 | aN2b(sn) |
| aN2c | aN2c | N_Regionale Lymfeklieren | 2.16.840.1.113883.2.4.3.11.60.40.4.10.2 | aN2c |
| aN2c(f) | aN2c(f) | N_Regionale Lymfeklieren | 2.16.840.1.113883.2.4.3.11.60.40.4.10.2 | aN2c(f) |

| | | | | |
|----------|----------|--------------------------|---|----------|
| | | Lymfeklieren | | |
| aN3a(f) | aN3a(f) | N_Regionale Lymfeklieren | 2.16.840.1.113883.2.4.3.11.60.40.4.10.2 | aN3a(f) |
| aN3a(sn) | aN3a(sn) | N_Regionale Lymfeklieren | 2.16.840.1.113883.2.4.3.11.60.40.4.10.2 | aN3a(sn) |
| aN3b | aN3b | N_Regionale Lymfeklieren | 2.16.840.1.113883.2.4.3.11.60.40.4.10.2 | aN3b |
| aN3b(f) | aN3b(f) | N_Regionale Lymfeklieren | 2.16.840.1.113883.2.4.3.11.60.40.4.10.2 | aN3b(f) |
| aN3b(sn) | aN3b(sn) | N_Regionale Lymfeklieren | 2.16.840.1.113883.2.4.3.11.60.40.4.10.2 | aN3b(sn) |
| aN3c | aN3c | N_Regionale Lymfeklieren | 2.16.840.1.113883.2.4.3.11.60.40.4.10.2 | aN3c |
| aN3c(f) | aN3c(f) | N_Regionale Lymfeklieren | 2.16.840.1.113883.2.4.3.11.60.40.4.10.2 | aN3c(f) |
| aN3c(sn) | aN3c(sn) | N_Regionale Lymfeklieren | 2.16.840.1.113883.2.4.3.11.60.40.4.10.2 | aN3c(sn) |

| Legend | |
|------------------|--|
| Definitie | |
| Datatype | |
| Opties | |

1.7.3 DistantMetastasis



| | |
|---------------|--|
| Opties | |
|---------------|--|

| | | |
|----------------------------|--|--|
| «data» | M_DistantMetastasis | |
| Definitie | Staging result of the presence or absence of distant metastasis, the M-category of the TNM classification. | |
| Datatype | CD | |
| DCM::ConceptId | NL-CM:4.27.26 | |
| DCM::DefinitionCode | SNOMED CT: 277208005 M category | |
| DCM::ValueSet | rgrpM_DistantMetastasisCodeList | OID: 2.16.840.1.113883.2.4.3.11.60.40.2.4.27 |
| DCM::ValueSet | cpM_DistantMetastasisCodeList | OID: 2.16.840.1.113883.2.4.3.11.60.40.2.4.27 |
| DCM::ValueSet | aM_DistantMetastasisCodeList | OID: 2.16.840.1.113883.2.4.3.11.60.40.2.4.27 |
| Opties | | |

| | | |
|----------------------------|---|--|
| «container» | DistantMetastasisLocalization | |
| Definitie | Container of the DistantMetastasisLocalization concept.This container contains all data elements of the DistantMetastasisLocalization concept | |
| Datatype | | |
| DCM::ConceptId | NL-CM:4.27.27 | |
| DCM::DefinitionCode | SNOMED CT: 385421009 Site of distant metastasis | |
| Opties | | |

| | | |
|---------------------------------|--|---|
| «data» | AnatomicalLocation | |
| Definitie | Contains the localization(s) of distant metastasis, caused by the primary tumor. | |
| Datatype | | |
| DCM::ConceptId | NL-CM:4.27.28 | |
| DCM::DefinitionCode | SNOMED CT: 385421009 Site of distant metastasis | |
| DCM::ReferencedConceptId | NL-CM:20.7.1 | This is a reference to the rootconcept of information model AnatomicalLocation. |
| Opties | | |

| | | |
|-----------------------------|---|--|
| «document» | aM_DistantMetastasisCodeList | |
| Definitie | De uitbreiding naar metastase op afstand voor een classificatie vastgesteld tijdens autopsie. | |
| Datatype | | |
| DCM::ValueSetBinding | Extensible | |
| DCM::ValueSetId | 2.16.840.1.113883.2.4.3.11.60.40.2.4.27.25 | |
| Opties | | |

| | |
|-------------------------------------|---|
| aM_AfstandsMetastaseCodeList | OID: 2.16.840.1.113883.2.4.3.11.60.40.2.4.27.25 |
|-------------------------------------|---|

| | | | | |
|---------|---------|-------------------------|---|---------|
| | | metastase | | |
| aM1 | aM1 | M_Afstands metastase | 2.16.840.1.113883.2.4.3.11.60.40.4.10.3 | aM1 |
| aM1a | aM1a | M_Afstands metastase | 2.16.840.1.113883.2.4.3.11.60.40.4.10.3 | aM1a |
| aM1a(0) | aM1a(0) | M_Afstands metastase | 2.16.840.1.113883.2.4.3.11.60.40.4.10.3 | aM1a(0) |
| aM1a(1) | aM1a(1) | M_Afstands metastase | 2.16.840.1.113883.2.4.3.11.60.40.4.10.3 | aM1a(1) |
| aM1b | aM1b | M_Afstands metastase | 2.16.840.1.113883.2.4.3.11.60.40.4.10.3 | aM1b |
| aM1b(0) | aM1b(0) | M_Afstands metastase | 2.16.840.1.113883.2.4.3.11.60.40.4.10.3 | aM1b(0) |
| aM1b(1) | aM1b(1) | M_Afstands metastase | 2.16.840.1.113883.2.4.3.11.60.40.4.10.3 | aM1b(1) |
| aM1c | aM1c | M_Afstands metastase | 2.16.840.1.113883.2.4.3.11.60.40.4.10.3 | aM1c |
| aM1c(0) | aM1c(0) | M_Afstands metastase | 2.16.840.1.113883.2.4.3.11.60.40.4.10.3 | aM1c(0) |
| aM1c(1) | aM1c(1) | M_Afstands metastase | 2.16.840.1.113883.2.4.3.11.60.40.4.10.3 | aM1c(1) |
| aM1d | aM1d | M_Afstands metastase | 2.16.840.1.113883.2.4.3.11.60.40.4.10.3 | aM1d |
| aM1d(0) | aM1d(0) | M_Afstands metastase | 2.16.840.1.113883.2.4.3.11.60.40.4.10.3 | aM1d(0) |
| aM1d(1) | aM1d(1) | M_Afstands metastase | 2.16.840.1.113883.2.4.3.11.60.40.4.10.3 | aM1d(1) |

| | | |
|-----------------------------|--|--|
| «document» | cpM_DistantMetastasisCodelist | |
| Definitie | De uitbreiding naar metastase op afstand (M) voor een klinische of postchirurgische histologische pathologische classificatie. | |
| Datatype | | |
| DCM::ValueSetBinding | Extensible | |
| DCM::ValueSetId | 2.16.840.1.113883.2.4.3.11.60.40.2.4.27.28 | |
| Opties | | |

| | |
|--|--|
| cpM_AfstandsMetastasenCodelijst | OID: 2.16.840.1.113883.2.4.3.11.60.40.2.4.27. |
|--|--|

| Concept Name | Concept Code | Coding System Name | Coding System OID | Description |
|---------------------|---------------------|---------------------------|---|--------------------|
| cM0 | cM0 | M_Afstands metastase | 2.16.840.1.113883.2.4.3.11.60.40.4.10.3 | cM0 |
| cM0(i+) | cM0(i+) | M_Afstands metastase | 2.16.840.1.113883.2.4.3.11.60.40.4.10.3 | cM0(i+) |
| cM0(mol+) | cM0(mol+) | M_Afstands metastase | 2.16.840.1.113883.2.4.3.11.60.40.4.10.3 | cM0(mol+) |

| | | | | |
|---------|---------|----------------------|---|---------|
| cM1b(0) | cM1b(0) | M_Afstands metastase | 2.16.840.1.113883.2.4.3.11.60.40.4.10.3 | cM1b(0) |
| cM1b(1) | cM1b(1) | M_Afstands metastase | 2.16.840.1.113883.2.4.3.11.60.40.4.10.3 | cM1b(1) |
| cM1c | cM1c | M_Afstands metastase | 2.16.840.1.113883.2.4.3.11.60.40.4.10.3 | cM1c |
| cM1c(0) | cM1c(0) | M_Afstands metastase | 2.16.840.1.113883.2.4.3.11.60.40.4.10.3 | cM1c(0) |
| cM1c(1) | cM1c(1) | M_Afstands metastase | 2.16.840.1.113883.2.4.3.11.60.40.4.10.3 | cM1c(1) |
| cM1d | cM1d | M_Afstands metastase | 2.16.840.1.113883.2.4.3.11.60.40.4.10.3 | cM1d |
| cM1d(0) | cM1d(0) | M_Afstands metastase | 2.16.840.1.113883.2.4.3.11.60.40.4.10.3 | cM1d(0) |
| cM1d(1) | cM1d(1) | M_Afstands metastase | 2.16.840.1.113883.2.4.3.11.60.40.4.10.3 | cM1d(1) |
| pM1 | pM1 | M_Afstands metastase | 2.16.840.1.113883.2.4.3.11.60.40.4.10.3 | pM1 |
| pM1a | pM1a | M_Afstands metastase | 2.16.840.1.113883.2.4.3.11.60.40.4.10.3 | pM1a |
| pM1a(0) | pM1a(0) | M_Afstands metastase | 2.16.840.1.113883.2.4.3.11.60.40.4.10.3 | pM1a(0) |
| pM1a(1) | pM1a(1) | M_Afstands metastase | 2.16.840.1.113883.2.4.3.11.60.40.4.10.3 | pM1a(1) |
| pM1b | pM1b | M_Afstands metastase | 2.16.840.1.113883.2.4.3.11.60.40.4.10.3 | pM1b |
| pM1b(0) | pM1b(0) | M_Afstands metastase | 2.16.840.1.113883.2.4.3.11.60.40.4.10.3 | pM1b(0) |
| pM1b(1) | pM1b(1) | M_Afstands metastase | 2.16.840.1.113883.2.4.3.11.60.40.4.10.3 | pM1b(1) |
| pM1c | pM1c | M_Afstands metastase | 2.16.840.1.113883.2.4.3.11.60.40.4.10.3 | pM1c |
| pM1c(0) | pM1c(0) | M_Afstands metastase | 2.16.840.1.113883.2.4.3.11.60.40.4.10.3 | pM1c(0) |
| pM1c(1) | pM1c(1) | M_Afstands metastase | 2.16.840.1.113883.2.4.3.11.60.40.4.10.3 | pM1c(1) |
| pM1d | pM1d | M_Afstands metastase | 2.16.840.1.113883.2.4.3.11.60.40.4.10.3 | pM1d |
| pM1d(0) | pM1d(0) | M_Afstands metastase | 2.16.840.1.113883.2.4.3.11.60.40.4.10.3 | pM1d(0) |
| pM1d(1) | pM1d(1) | M_Afstands metastase | 2.16.840.1.113883.2.4.3.11.60.40.4.10.3 | pM1d(1) |

«document»

rcrpM_DistantMetastasisCodelist

Definitie

De uitbreiding naar metastase op afstand (M) voor een klinische of

| Concept Name | Concept Code | Coding System Name | Coding System OID | Description |
|--------------|--------------|----------------------|---|-------------|
| rcM0 | rcM0 | M_Afstands metastase | 2.16.840.1.113883.2.4.3.11.60.40.4.10.3 | rcM0 |
| rcM0(i+) | rcM0(i+) | M_Afstands metastase | 2.16.840.1.113883.2.4.3.11.60.40.4.10.3 | rcM0(i+) |
| rcM0(mol+) | rcM0(mol+) | M_Afstands metastase | 2.16.840.1.113883.2.4.3.11.60.40.4.10.3 | rcM0(mol+) |
| rcM1 | rcM1 | M_Afstands metastase | 2.16.840.1.113883.2.4.3.11.60.40.4.10.3 | rcM1 |
| rcM1a | rcM1a | M_Afstands metastase | 2.16.840.1.113883.2.4.3.11.60.40.4.10.3 | rcM1a |
| rcM1a(0) | rcM1a(0) | M_Afstands metastase | 2.16.840.1.113883.2.4.3.11.60.40.4.10.3 | rcM1a(0) |
| rcM1a(1) | rcM1a(1) | M_Afstands metastase | 2.16.840.1.113883.2.4.3.11.60.40.4.10.3 | rcM1a(1) |
| rcM1b | rcM1b | M_Afstands metastase | 2.16.840.1.113883.2.4.3.11.60.40.4.10.3 | rcM1b |
| rcM1b(0) | rcM1b(0) | M_Afstands metastase | 2.16.840.1.113883.2.4.3.11.60.40.4.10.3 | rcM1b(0) |
| rcM1b(1) | rcM1b(1) | M_Afstands metastase | 2.16.840.1.113883.2.4.3.11.60.40.4.10.3 | rcM1b(1) |
| rcM1c | rcM1c | M_Afstands metastase | 2.16.840.1.113883.2.4.3.11.60.40.4.10.3 | rcM1c |
| rcM1c(0) | rcM1c(0) | M_Afstands metastase | 2.16.840.1.113883.2.4.3.11.60.40.4.10.3 | rcM1c(0) |
| rcM1c(1) | rcM1c(1) | M_Afstands metastase | 2.16.840.1.113883.2.4.3.11.60.40.4.10.3 | rcM1c(1) |
| rcM1d | rcM1d | M_Afstands metastase | 2.16.840.1.113883.2.4.3.11.60.40.4.10.3 | rcM1d |
| rcM1d(0) | rcM1d(0) | M_Afstands metastase | 2.16.840.1.113883.2.4.3.11.60.40.4.10.3 | rcM1d(0) |
| rcM1d(1) | rcM1d(1) | M_Afstands metastase | 2.16.840.1.113883.2.4.3.11.60.40.4.10.3 | rcM1d(1) |
| rpM1 | rpM1 | M_Afstands metastase | 2.16.840.1.113883.2.4.3.11.60.40.4.10.3 | rpM1 |
| rpM1a | rpM1a | M_Afstands metastase | 2.16.840.1.113883.2.4.3.11.60.40.4.10.3 | rpM1a |
| rpM1a(0) | rpM1a(0) | M_Afstands metastase | 2.16.840.1.113883.2.4.3.11.60.40.4.10.3 | rpM1a(0) |
| rpM1a(1) | rpM1a(1) | M_Afstands metastase | 2.16.840.1.113883.2.4.3.11.60.40.4.10.3 | rpM1a(1) |
| rpM1b | rpM1b | M_Afstands metastase | 2.16.840.1.113883.2.4.3.11.60.40.4.10.3 | rpM1b |
| rpM1b(0) | rpM1b(0) | M_Afstands metastase | 2.16.840.1.113883.2.4.3.11.60.40.4.10.3 | rpM1b(0) |
| rpM1b(1) | rpM1b(1) | M_Afstands | 2.16.840.1.113883.2.4.3.11.60.40.4.10.3 | rpM1b(1) |

| | | | | |
|----------|----------|-------------------------|---|----------|
| | | metastase | | |
| rpM1d(1) | rpM1d(1) | M_Afstands metastase | 2.16.840.1.113883.2.4.3.11.60.40.4.10.3 | rpM1d(1) |

| Legend | |
|------------------|--|
| Definitie | |
| Datatype | |
| | |
| Opties | |

1.8 Example Instances

| TNMTumorClassificatie | | |
|--|---|-----------------------------------|
| datumTNMClassificatie | TNMVersie | Geïntegreerde TNM Waarde |
| 01/08/2020 | AJCC 8e editie | cT3N2M1 |
| AnatomischStadium | PrognostischStadium | R_ResidueleTumor |
| Stage IV | Stage IV | -- |
| Opmerking | HER2 negatief, ER negatief, PR negatief | |
| L_LymfatischeInvasie | Pn_PerineuraleInvasie | V_VeneuzeInvasie |
| -- | -- | -- |
| Primaire Tumor | | |
| m_PrimaireTumorAantal | T_tumor | G_DifferentiatiegraadTumor |
| 1 | cT3 | G2 |
| Afwijking | | |
| AfwijkingNummer | Morfologie (ICD-O-3) | |
| 1 | Infiltrerend ductaal carcinoom, (8500/3) | |
| TumorLokalisatie - AnatomischeLocatie | | |
| Locatie ICD-O-3 | Locatie SNOMED CT | Lateraliteit |
| (C50.5) Laterale onderkwadrant van borst | structuur van laterale onderkwadrant van mamma (33564002) | Rechts |
| AfwijkingNummer | Morfologie (ICD-O-3) | |
| 2 | Fibroadenoom (9010/0) | |
| Regionale Lymfeklieren | | |
| N_RegionaleLymfeklieren | cN2 | |
| RegionaleLymfeklieren Localisatie - AnatomischeLocatie | | |
| Locatie ICD-O-3 | Locatie | Lateraliteit |
| C77.3 Infraclaviculaire lymfeklier | structuur van infraclaviculaire lymfeklier (9659009) | Rechts |
| RegionaleLymfeklieren Localisatie - AnatomischeLocatie | | |
| Locatie ICD-O-3 | Locatie | Lateraliteit |
| C77.3 Axillaire lymfeklier | structuur van nodus lymphoideus axillaris (68171009) | Rechts |
| AfstandsMetastasen | | |
| M_Afstandsmetastasen | cM1 | |
| AfstandsMetastasen Lokalisatie | | |
| Locatie (ICD-O-3) | Locatie | Lateraliteit |
| C34.1 Bovenkwab van long | Structuur van lobus superior pulmonis (45653009) | Rechts |

1.9 Instructions

From a generic TNM Classification towards a disease-specific TNM Classification

Development or implementation of a tumor-specific information model of the TNM Classification

manage the value sets as part of the management of the HCIMs (Health and Care Information Model). When a unique and international reference to the TNM Classification standard as codesystem and valuesets becomes available these can be amended in a next version of the HCIM.

Starting points from the perspective of the TNM Classification standard

- One TNM-classification per single organ, and one classification per side for paired organs. For example, when breast cancer involves a primary tumor in both breasts, there will be two instances of the classification with laterality 'left' for one breast and laterality 'right' for the other ('bilateral' is not allowed for paired organs).
- The HCIM does not only encompass the outcome of the TNM classification, but also the exact localization of the primary tumor(s), the positive lymph nodes, and metastases.
- In case of multiple primary tumors in the same organ, one should classify the tumor with the highest T-category, and mention the multiple presence or number of tumors between brackets. For example, T1 (m) or T2 (5). The lesion with the highest T-category determines the classification of the tumor. To distinguish between lesions and to represent each individual lesion, the HCIM has the code 'Lesion'. Each lesion has a number. The HCIM does not represent which lesion (e.g. 1, 2, or 3) has the highest T-category, since this is only clear after judgment by the health professional on the morphology and/or imaging.

Use of the UICC (<http://www.uicc.org/resources/tnm>) / AJCC

(<http://cancerstaging.org/references-tools/deskreferences/Pages/default.aspx>) version of the

Classification of Malignant Tumours.

- Although definitions and wording should not differ between the AJCC and UICC TNM classifications, some differences have regrettably crept in (for example: the definition of regional lymph nodes associated with carcinomas of the esophagus and endometrium). Therefore, the HCIM allows choosing between the UICC or AJCC version. Criteria within the TNM-classification system have changed over the years and resulted in various editions. As a result, a specific tumor stage may have a different prognosis, depending on the edition used. Furthermore, it is important to consider the consequences of improved treatment over time.
- Beside staging based on the UICC or AJCC classifications there is the 'Essential TNM'. This is a simplified version of the TNM, specifically developed for the representation of the occurrence of cancer in low-income and middle-income countries. These countries often lack the resources for early diagnosis, and make limited use of the TNM classification system (in these countries, cancer is generally detected in a very late stage). This special version of the TNM has not been taken into account while developing this HCIM. Furthermore, the use of the 'Essential TNM' is generally limited to acquire data for statistics related to the occurrence of certain malignancies in these countries.

Prefix and suffix are integrated in value sets

Although it would be possible to create separate value sets for the potential prefixes and suffixes associated with the T, N, and M items, we chose to facilitate the use of the model by integrating them in the T, N, and M value sets. This decision is based on the current insight that it prevents the creation of invalid combinations.

Prefix

- **c:** Clinical classification, based on data prior to treatment, such as clinical examination, imaging, endoscopy, biopsies, surgical exploration or examination under anesthesia, and other types of clinical examination.
- **yc:** Classification performed during or following initial multimodal therapy (non-surgical).
- **p:** Post-surgical histopathological classification. This is based on data prior to treatment, such as pathology with pathological examination after surgical treatment.
- **yp:** Classification performed during or after multimodal treatment (including surgical treatment).
- **rc:** Clinical classification in case of a recurrent tumor (after a disease-free interval).

Information Model to which or from which a hyperlink is referred. In the event of contradiction mentioned Health and Care Information Model documents and files, the most recent and highest in the listed order in the revisions will indicate the priority of the documents in question. If information included in the digital version of a Health and Care Information Model is also distributed in written version will be leading in case of textual differences. This will apply if both have the same number and date. A definitive version has priority over a draft version. A revised version has priority over previous versions.

1.19 Terms of Use

The user may use the Health and Care Information Models without limitations. The copyright provisions in the paragraph concerned apply to copying, distributing and passing on the Health and Care Information Models.

1.20 Copyrights

A Health and Care Information Model qualifies as a work within the meaning of Section 10 of the Copyright Act (Auteurswet). Copyrights protect the Health and Care Information Models and these rights belong to the cooperating parties.

The user may copy, distribute and pass on the information in this Health and Care Information Model under the conditions that apply for Creative Commons license Attribution-NonCommercial-ShareAlike 3.0 Netherlands (CC BY-NC-SA-3.0).

The content is available under Creative Commons Attribution-NonCommercial-ShareAlike 3.0 (Netherlands) (<http://creativecommons.org/licenses/by-nc-sa/3.0/nl/>)

This does not apply to information from third parties that sometimes is used and / or referred to in the Health and Care Information Model, for example to an international medical terminology system. Any rights that protect this information are not owned by the cooperating parties but by those third parties.

Nictiz is the independent national competence centre for electronic exchange of health and care information. The activities of Nictiz include the targeted development and management of information standards at the national level and in partnership with the stakeholders in healthcare. Nictiz advises these parties on all aspects of information exchange and identifies (future) national and international developments.

Nictiz

P.O. Box 19121
2500 CC Den Haag
Oude Middenweg 55
2491 AC Den Haag

070-3173450
info@nictiz.nl
www.nictiz.nl

