

Health & Care Information Model: nl.zorg.FunctionalOrMentalStatus-v3.1.1

Status:Final

Release:2019

Release status: Prepublished

Managed by:



Content

1. nl.zorg.FunctionalOrMentalStatus-v3.1.1	3
1.1 Revision History	3
1.2 Concept	3
1.3 Mindmap	3
1.4 Purpose	4
1.5 Patient Population	4
1.6 Evidence Base	4
1.7 Information Model	4
1.8 Example Instances	8
1.9 Instructions	8
1.10 Interpretation	8
1.11 Care Process	8
1.12 Example of the Instrument	8
1.13 Constraints	8
1.14 Issues	8
1.15 References	8
1.16 Functional Model	8
1.17 Traceability to other Standards	9
1.18 Disclaimer	9
1.19 Terms of Use	9
1.20 Copyrights	9

1. nl.zorg.FunctionalOrMentalStatus-v3.1.1

DCM::CoderList	Kerngroep Registratie aan de Bron
DCM::ContactInformation.Address	*
DCM::ContactInformation.Name	*
DCM::ContactInformation.Telecom	*
DCM::ContentAuthorList	Projectgroep Generieke Overdrachtsgegevens & Kerngroep Registratie aan de Bron
DCM::CreationDate	12-9-2014
DCM::DeprecatedDate	
DCM::DescriptionLanguage	nl
DCM::EndorsingAuthority.Address	
DCM::EndorsingAuthority.Name	PM
DCM::EndorsingAuthority.Telecom	
DCM::Id	2.16.840.1.113883.2.4.3.11.60.40.3.4.26
DCM::KeywordList	mentale status, functionele status, functionele beperking, mentale stoornis, ADL
DCM::LifecycleStatus	Final
DCM::ModelerList	Kerngroep Registratie aan de Bron
DCM::Name	nl.zorg.FunctioneleOfMentaleStatus
DCM::PublicationDate	06-07-2019
DCM::PublicationStatus	Prepublished
DCM::ReviewerList	Projectgroep Generieke Overdrachtsgegevens & Kerngroep Registratie aan de Bron
DCM::RevisionDate	31-12-2017
DCM::Superseeds	nl.zorg.FunctioneleOfMentaleStatus-v3.1
DCM::Version	3.1.1
HCIM::PublicationLanguage	EN

1.1 Revision History

Publicatieversie 1.0 (01-04-2015)

Bevat: ZIB-89, ZIB-308.

Incl. algemene wijzigingsverzoeken:

ZIB-94, ZIB-154, ZIB-200, ZIB-201, ZIB-309, ZIB-324, ZIB-326.

Publicatieversie 1.0.1 (22-05-2015)

Bevat: ZIB-384, ZIB-383, ZIB-382.

Publicatieversie 3.0 (01-05-2016)

Bevat: ZIB-453.

Publicatieversie 3.1 (04-09-2017)

Bevat: ZIB-564.

Publicatieversie 3.1 (26-02-2019)

Bevat: ZIB-681.

1.2 Concept

The functional or mental status provides insight into the patient's functional and mental limitations.

1.3 Mindmap

1.4 Purpose

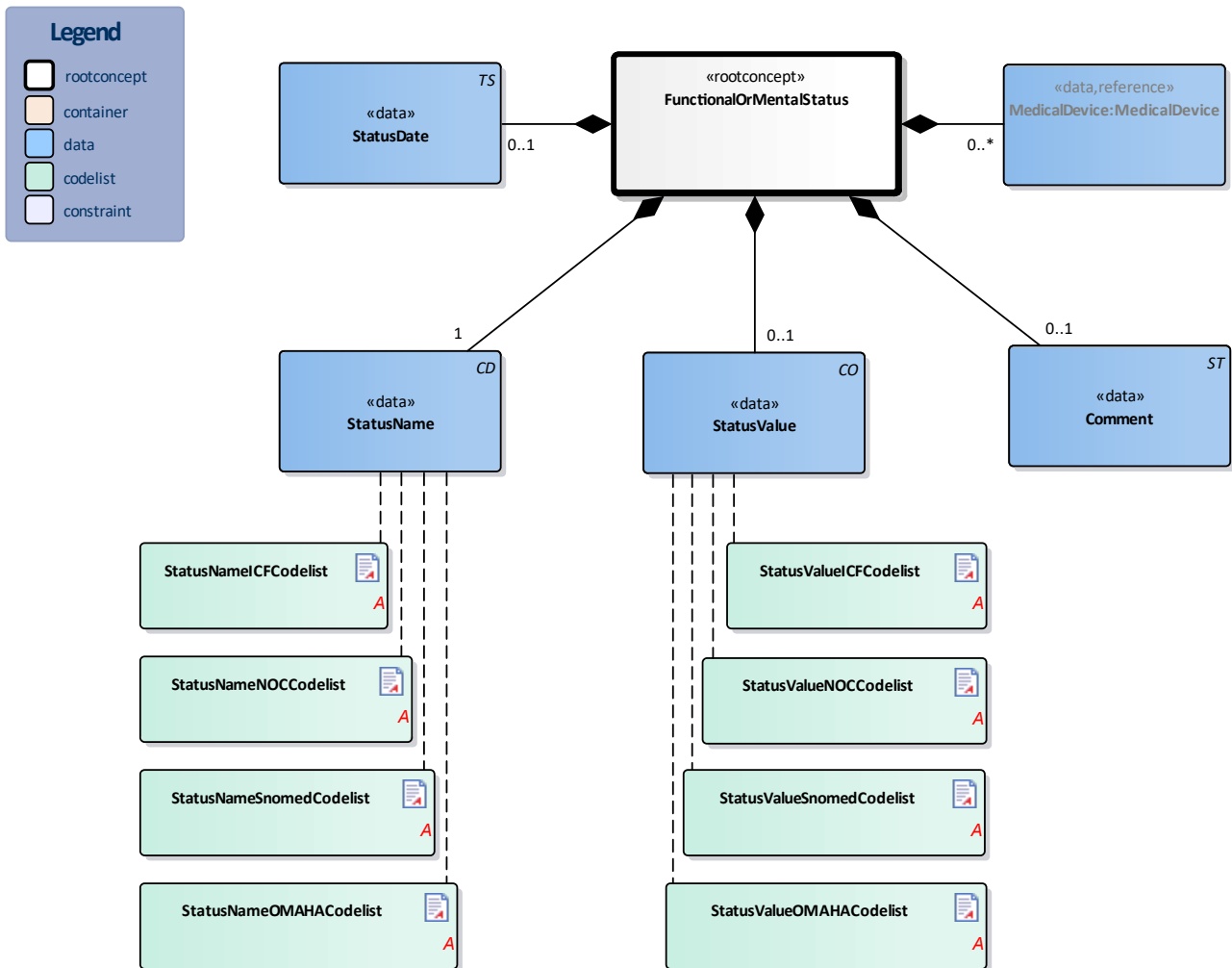
The patient's functional and mental status can be recorded to provide insight into the patient's limitations which need to be taken into account for further treatment and care and in order to evaluate the effects of a treatment.

Diagnoses with (the potential for) functional limitations are not to be recorded here. To record these, please use the Problem information model.

1.5 Patient Population

1.6 Evidence Base

1.7 Information Model



«rootconcept»	FunctionalOrMentalStatus	
Definitie	Root concept of FunctionalOrMentalStatus. This concept contains all data elements of the FunctionalOrMentalStatus information model.	
Datatype		
DCM::ConceptId	NL-CM:4.26.1	

Opties	
---------------	--

«data»	StatusName	
Definitie	<p>Coded description of the functional or mental status or limitation. Code systems used include:</p> <ul style="list-style-type: none"> • SNOMED CT • ICF (International Classification of Functioning, Disability and Health) • NOC (Nursing Outcomes Classification) • OMAHA 	
Datatype	CD	
DCM::ConceptId	NL-CM:4.26.2	
DCM::ExampleValue	Scheren (SNOMED CT: 284887008 ability to shave)	
DCM::ValueSet	StatusNameSnomedCodelist	OID: 2.16.840.1.113883.2.4.3.11.60.40.2.4.26.4
DCM::ValueSet	StatusNameICFCodelist	OID: 2.16.840.1.113883.2.4.3.11.60.40.2.4.26.3
DCM::ValueSet	StatusNameNOCCodelist	OID: 2.16.840.1.113883.2.4.3.11.60.40.2.4.26.2
DCM::ValueSet	StatusNameOMAHACodelist	OID: 2.16.840.1.113883.2.4.3.11.60.40.2.4.26.1
Opties		

«data»	StatusValue	
Definitie	<p>The extent to which the patient is limited by the functional or mental condition. If both the status name and the status value are recorded in code, then both values must come from the same code system. If the patient uses a medical device, the evaluation of the extent of the limitation will take place without this aid. The answer codes must be selected from the subselection of the code system corresponding with the request in accordance with the rules applicable to that system.</p>	
Datatype	CO	
DCM::ConceptId	NL-CM:4.26.3	
DCM::ExampleValue	Moeite met scheren (SNOMED CT: 284892005 difficulty shaving)	
DCM::ValueSet	StatusValueOMAHACodelist	OID: 2.16.840.1.113883.2.4.3.11.60.40.2.4.26.5
DCM::ValueSet	StatusValueICFCodelist	OID: 2.16.840.1.113883.2.4.3.11.60.40.2.4.26.6
DCM::ValueSet	StatusValueNOCCodelist	OID: 2.16.840.1.113883.2.4.3.11.60.40.2.4.26.7
DCM::ValueSet	StatusValueSnomedCodelist	OID: 2.16.840.1.113883.2.4.3.11.60.40.2.4.26.8
Opties		

«data»	StatusDate	
Definitie	Date on which the status was determined. A 'vague' date, such as only the year, is permitted.	
Datatype	TS	
DCM::ConceptId	NL-CM:4.26.6	
Opties		

«data»	Comment	
Definitie	Explanatory comments as a description of the functional or mental status.	
Datatype	ST	
DCM::ConceptId	NL-CM:4.26.4	
DCM::DefinitionCode	LOINC: 48767-8 Annotation comment	
Opties		

«data»	MedicalDevice:MedicalDevice	
Definitie	Medical aid the patient has to reduce the impact of the disability or disorder.	
Datatype		
DCM::ConceptId	NL-CM:4.26.5	
DCM::ReferencedConceptId	NL-CM:10.1.1	This is a reference to the rootconcept of information model MedicalDevice.
Opties		

«document»	StatusNameICFCodelist	
Definitie		
Datatype		
DCM::ValueSetBinding	Extensible	
DCM::ValueSetId	2.16.840.1.113883.2.4.3.11.60.40.2.4.26.3	
Opties		

StatusNaamICFCodelijst		OID: 2.16.840.1.113883.2.4.3.11.60.40.2.4.26.3
Codes	Coding Syst. Name	Coding System OID
Alle waarden	ICF	2.16.840.1.113883.6.254

«document»	StatusNameNOCCodelist	
Definitie		
Datatype		
DCM::ValueSetBinding	Extensible	
DCM::ValueSetId	2.16.840.1.113883.2.4.3.11.60.40.2.4.26.2	
Opties		

StatusNaamNOCCodelijst		OID: 2.16.840.1.113883.2.4.3.11.60.40.2.4.26.2
Codes	Coding Syst. Name	Coding System OID
Alle waarden	NOC	2.16.840.1.113883.6.16

«document»	StatusNameOMAHACodelist	
Definitie		
Datatype		
DCM::ValueSetBinding	Extensible	
DCM::ValueSetId	2.16.840.1.113883.2.4.3.11.60.40.2.4.26.1	
Opties		

StatusNaamOMAHACodelijst		OID: 2.16.840.1.113883.2.4.3.11.60.40.2.4.26.1
Codes	Coding Syst. Name	Coding System OID
Alle waarden	OMAHA	2.16.840.1.113883.6.98

«document»		StatusNameSnomedCodelist
Definitie		
Datatype		
DCM::ValueSetBinding	Extensible	
DCM::ValueSetId	2.16.840.1.113883.2.4.3.11.60.40.2.4.26.4	
Opties		
StatusNaamSnomedCodelijst		OID: 2.16.840.1.113883.2.4.3.11.60.40.2.4.26.4
Codes	Coding Syst. Name	Coding System OID
Alle waarden	SNOMED CT	2.16.840.1.113883.6.96

«document»		StatusValueICFCodelist
Definitie		
Datatype		
DCM::ValueSetBinding	Extensible	
DCM::ValueSetId	2.16.840.1.113883.2.4.3.11.60.40.2.4.26.6	
Opties		
StatusWaardeICFCodelijst		OID: 2.16.840.1.113883.2.4.3.11.60.40.2.4.26.6
Codes	Coding Syst. Name	Coding System OID
Alle waarden	ICF	2.16.840.1.113883.6.254

«document»		StatusValueNOCCodelist
Definitie		
Datatype		
DCM::ValueSetBinding	Extensible	
DCM::ValueSetId	2.16.840.1.113883.2.4.3.11.60.40.2.4.26.7	
Opties		
StatusWaardeNOCCodelijst		OID: 2.16.840.1.113883.2.4.3.11.60.40.2.4.26.7
Codes	Coding Syst. Name	Coding System OID
Alle waarden	NOC	2.16.840.1.113883.6.16

«document»		StatusValueOMAHACodelist
Definitie		
Datatype		
DCM::ValueSetBinding	Extensible	
DCM::ValueSetId	2.16.840.1.113883.2.4.3.11.60.40.2.4.26.5	
Opties		
StatusWaardeOMAHACodelijst		OID: 2.16.840.1.113883.2.4.3.11.60.40.2.4.26.5
Codes	Coding Syst. Name	Coding System OID
Alle waarden	OMAHA	2.16.840.1.113883.6.98

«document»		StatusValueSnomedCodelist
Definitie		
Datatype		
DCM::ValueSetBinding	Extensible	

DCM::ValueSetId	2.16.840.1.113883.2.4.3.11.60.40.2.4.26.8	
Opties		
StatusWaardeSnomedCodelijst	OID: 2.16.840.1.113883.2.4.3.11.60.40.2.4.26.8	
Codes	Coding Syst. Name	Coding System OID
Alle waarden	SNOMED CT	2.16.840.1.113883.6.96

	Legend	
Definitie		
Datatype		
Opties		

1.8 Example Instances

FunctioneleOfMentaleStatus	
StatusNaam	Zich scheren
StatusWaarde	Moeite met scheren
StatusDatum	23-02-2015
Toelichting	--
MedischHulpmiddel	--

1.9 Instructions

1.10 Interpretation

1.11 Care Process

1.12 Example of the Instrument

1.13 Constraints

1.14 Issues

1.15 References

1.16 Functional Model

1.17 Traceability to other Standards

1.18 Disclaimer

The Health and Care Information Models (a.k.a Clinical Building Block) has been made in collaboration with several different parties in healthcare. These parties asked Nictiz to manage good maintenance and development of the information models. Hereafter, these parties and Nictiz are referred to as the collaborating parties. The collaborating parties paid utmost attention to the reliability and topicality of the data in these Health and Care Information Models. Omissions and inaccuracies may however occur. The collaborating parties are not liable for any damages resulting from omissions or inaccuracies in the information provided, nor are they liable for damages resulting from problems caused by or inherent to distributing information on the internet, such as malfunctions, interruptions, errors or delays in information or services provide by the parties to you or by you to the parties via a website or via e-mail, or any other digital means. The collaborating parties will also not accept liability for any damages resulting from the use of data, advice or ideas provided by or on behalf of the parties by means of the Health and Care Information Models. The parties will not accept any liability for the content of information in this Health and Care Information Model to which or from which a hyperlink is referred. In the event of contradictions in mentioned Health and Care Information Model documents and files, the most recent and highest version of the listed order in the revisions will indicate the priority of the documents in question. If information included in the digital version of a Health and Care Information Model is also distributed in writing, the written version will be leading in case of textual differences. This will apply if both have the same version number and date. A definitive version has priority over a draft version. A revised version has priority over previous versions.

1.19 Terms of Use

The user may use the Health and Care Information Models without limitations. The copyright provisions in the paragraph concerned apply to copying, distributing and passing on the Health and Care Information Models.

1.20 Copyrights

A Health and Care Information Model qualifies as a work within the meaning of Section 10 of the Copyright Act (Auteurswet). Copyrights protect the Health and Care Information Models and these rights are owned by the cooperating parties.

The user may copy, distribute and pass on the information in this Health and Care Information Model under the conditions that apply for Creative Commons license Attribution-NonCommercial-ShareAlike 3.0 Netherlands (CC BY-NC-SA-3.0).

The content is available under Creative Commons Attribution-NonCommercial-ShareAlike 3.0 (see also <http://creativecommons.org/licenses/by-nc-sa/3.0/nl/>)

This does not apply to information from third parties that sometimes is used and / or referred to in a Health and Care Information Model, for example to an international medical terminology system. Any (copyright) rights that protect this information are not owned by the cooperating parties but by those third parties.