

# Health & Care Information Model:

## nl.zorg.Signaling-v1.0

Status: Final

Release: 2022

Release status: Prepublished

Managed by:



# Content

<b>1. nl.zorg.Signaling-v1.0</b>	<b>3</b>
1.1 Revision History	3
1.2 Concept	3
1.3 Mindmap	3
1.4 Purpose	3
1.5 Patient Population	3
1.6 Evidence Base	3
1.7 Information Model	4
1.8 Example Instances	8
1.9 Instructions	8
1.10 Interpretation	8
1.11 Care Process	8
1.12 Example of the Instrument	8
1.13 Constraints	8
1.14 Issues	9
1.15 References	9
1.16 Functional Model	9
1.17 Traceability to other Standards	9
1.18 Disclaimer	9
1.19 Terms of Use	9
1.20 Copyrights	9

# 1. nl.zorg.Signaling-v1.0

DCM::CoderList	Projectgroep VIPP GGZ
DCM::ContactInformation.Address	*
DCM::ContactInformation.Name	*
DCM::ContactInformation.Telecom	*
DCM::ContentAuthorList	Projectgroep VIPP GGZ
DCM::CreationDate	30-3-2022
DCM::DeprecatedDate	
DCM::DescriptionLanguage	nl
DCM::EndorsingAuthority.Address	
DCM::EndorsingAuthority.Name	*
DCM::EndorsingAuthority.Telecom	
DCM::Id	2.16.840.1.113883.2.4.3.11.60.40.3.16.5
DCM::KeywordList	
DCM::LifecycleStatus	Final
DCM::ModelerList	Projectgroep VIPP GGZ
DCM::Name	nl.zorg.Signalering
DCM::PublicationDate	10-06-2022
DCM::PublicationStatus	Prepublished
DCM::ReviewerList	
DCM::RevisionDate	
DCM::Supersedes	*
DCM::Version	1.0
HCIM::PublicationLanguage	EN

## 1.1 Revision History

Publicatieversie 1.0 (10-06-2022)

Bevat:

## 1.2 Concept

A signal is a (group of) observation(s) of symptoms or behavior that can be an aid in signaling a worsening of a certain condition.

## 1.3 Mindmap

## 1.4 Purpose

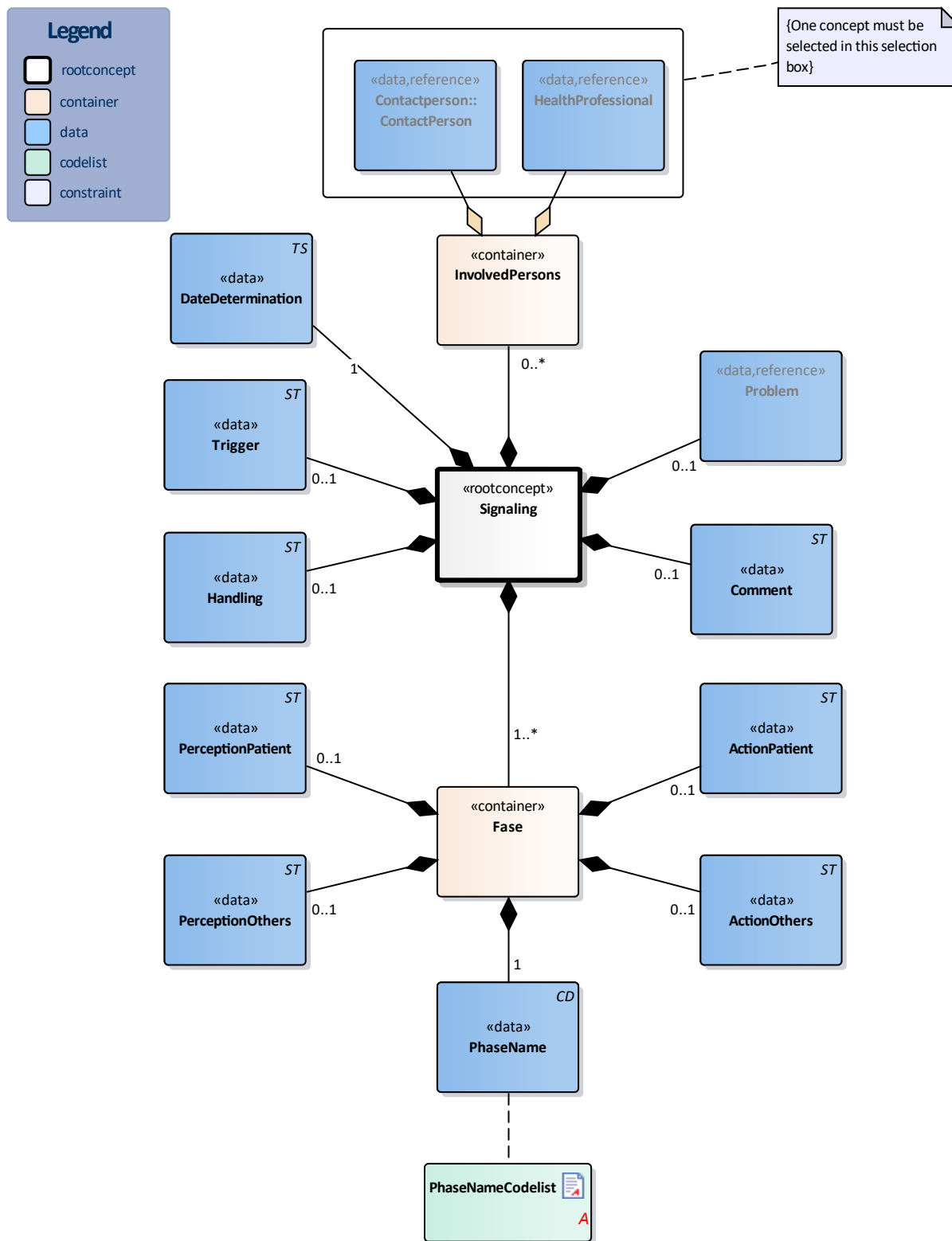
By recognizing and observing certain signals by the patient himself or his environment in time and taking the right actions, worse can be prevented.

By recording the patient-specific pattern in, for example, an identification plan, the patient himself and his environment also gain insight into the course of aggravation as well as a handle for patient-specific correct approach and interventions.

## 1.5 Patient Population

## 1.6 Evidence Base

## 1.7 Information Model



<b>«rootconcept»</b>	<b>Signaling</b>
<b>Definitie</b>	Root concept of the Signaling information model.This root concept contains all data elements of the Signaling information model.
<b>Datatype</b>	
<b>DCM::ConceptId</b>	NL-CM:16.5.1
<b>Opties</b>	

<b>«container»</b>	<b>InvolvedPersons</b>
--------------------	------------------------

<b>Definitie</b>	Container of the InvolvedPersons concept.This container contains all data elements of the InvolvedPersons concept.	
<b>Datatype</b>		
<b>DCM::ConceptId</b>	NL-CM:16.5.5	
<b>DCM::DefinitionCode</b>	SNOMED CT: 125676002 Person	
<b>Opties</b>		

<b>«data»</b>	<b>Contactperson::ContactPerson</b>	
<b>Definitie</b>	The patient's contactperson with whom the signals, perception and actions have been discussed and are known.	
<b>Datatype</b>		
<b>DCM::ConceptId</b>	NL-CM:16.5.6	
<b>DCM::DefinitionCode</b>	SNOMED CT: 70862002 Contact person	
<b>DCM::ReferencedConceptId</b>	NL-CM:3.1.1	This is a reference to the rootconcept of information model ContactPerson.
<b>Opties</b>		

<b>«data»</b>	<b>HealthProfessional</b>	
<b>Definitie</b>	The healthcare professional involved with the patient with whom the signals, perception and actions have been discussed and are known.</PRE>	
<b>Datatype</b>		
<b>DCM::ConceptId</b>	NL-CM:16.5.15	
<b>DCM::DefinitionCode</b>	SNOMED CT: 223366009 Healthcare professional	
<b>DCM::ReferencedConceptId</b>	NL-CM:17.1.1	This is a reference to the rootconcept of information model HealthProfessional.
<b>Opties</b>		

<b>«data»</b>	<b>DateDetermination</b>	
<b>Definitie</b>	Date on which the Signaling Plan was measured.</PRE>	
<b>Datatype</b>	TS	
<b>DCM::ConceptId</b>	NL-CM:16.5.7	
<b>Opties</b>		

<b>«data»</b>	<b>Trigger</b>	
<b>Definitie</b>	A specific event or experience that activates the patient's behavior.	
<b>Datatype</b>	ST	
<b>DCM::ConceptId</b>	NL-CM:16.5.12	
<b>DCM::DefinitionCode</b>	SNOMED CT: 160951000146108 Trigger	
<b>Opties</b>		

<b>«data»</b>	<b>Handling</b>	
<b>Definitie</b>	Description of the desired handling of the patient in the event of a crisis.	
<b>Datatype</b>	ST	
<b>DCM::ConceptId</b>	NL-CM:16.5.4	
<b>DCM::DefinitionCode</b>	SNOMED CT: 180351000146109 Type gedrag en/of manier van communiceren bij benaderen van zorgafnemer	
<b>Opties</b>		

«data»	Problem	
Definitie	The patient's condition or problem to which the observation relates</PRE>	
Datatype		
DCM::ConceptId	NL-CM:16.5.10	
DCM::DefinitionCode	SNOMED CT: 55607006 Problem	
DCM::ReferencedConceptId	NL-CM:5.1.1	This is a reference to the rootconcept of information model Problem.
Opties		

«data»	Comment	
Definitie	A comment on the signaling.	
Datatype	ST	
DCM::ConceptId	NL-CM:16.5.11	
DCM::DefinitionCode	LOINC: 48767-8 Annotation comment [Interpretation] Narrative	
Opties		

«container»	Fase	
Definitie	Container of the Fase concept.This container contains all data elements of the Fase concept.	
Datatype		
DCM::ConceptId	NL-CM:16.5.8	
Opties		

«data»	PerceptionPatient	
Definitie	Description of behaviour, symptoms and/or thoughts that are characteristic of the particular phase that the patient observes in himself.	
Datatype	ST	
DCM::ConceptId	NL-CM:16.5.14	
DCM::DefinitionCode	SNOMED CT: 180321000146100 Zelfgerapporteerd gedrag	
Opties		

«data»	PerceptionOthers	
Definitie	A description of behavior and/or symptoms of the patient observed by others that are characteristic of a particular phase. The signs of aggravation on which certain actions can be taken by the patient and possibly his environment.	
Datatype	ST	
DCM::ConceptId	NL-CM:16.5.13	
DCM::DefinitionCode	SNOMED CT: 180331000146103 Gedrag gerapporteerd door sociale omgeving van zorgafnemer	
Opties		

«data»	ActionPatient	
Definitie	A description of what the patient can do or perform to prevent aggravation or relapse.	
Datatype	ST	
DCM::ConceptId	NL-CM:16.5.3	

<b>DCM::DefinitionCode</b>	SNOMED CT: 180341000146106 Interventie door zorgafnemer	
<b>Opties</b>		

<b>«data»</b>	<b>ActionOthers</b>	
<b>Definitie</b>	A description of actions or interventions in a patient's perception that others can perform to prevent its aggravation.van	
<b>Datatype</b>	ST	
<b>DCM::ConceptId</b>	NL-CM:16.5.2	
<b>DCM::DefinitionCode</b>	SNOMED CT: 385990006 Interventies door ondersteunend netwerk	
<b>Opties</b>		

<b>«data»</b>	<b>PhaseName</b>	
<b>Definitie</b>	The phase of signaling the condition to which the particular actions and observations relate.	
<b>Datatype</b>	CD	
<b>DCM::ConceptId</b>	NL-CM:16.5.9	
<b>DCM::DefinitionCode</b>	SNOMED CT: 180361000146107 Fase van signaleringsplan voor geestelijke gezondheid	
<b>DCM::ValueSet</b>	PhaseNameCodelist	OID: 2.16.840.1.113883.2.4.3.11.60.40.2.16.5.1
<b>Opties</b>		

<b>«document»</b>	<b>PhaseNameCodelist</b>	
<b>Definitie</b>		
<b>Datatype</b>		
<b>DCM::ValueSetBinding</b>	Extensible	
<b>DCM::ValueSetId</b>	2.16.840.1.113883.2.4.3.11. 60.40.2.16.5.1	
<b>HCIM::ValueSetLanguage</b>	--	
<b>Opties</b>		

<b>FaseNaamCodelijst</b>	<b>OID: 2.16.840.1.113883.2.4.3.11.60.40.2.16.5.1</b>			
--------------------------	---	--	--	--

Concept Name	Concept Code	Coding Syst. Name	Coding System OID	Description
fase 1 van signaleringsplan voor geestelijke gezondheid	1802810001 46107	SNOMED CT	2.16.840.1.113883.6.96	Groen
fase 2 van signaleringsplan voor geestelijke gezondheid	1802810001 46109 1802810001 46109	SNOMED CT	2.16.840.1.113883.6.96	Oranje
fase 3 van signaleringsplan voor geestelijke gezondheid	1802810001 46108	SNOMED CT	2.16.840.1.113883.6.96	Rood

	<b>Legend</b>
<b>Definitie</b>	
<b>Datatype</b>	

## 1.8 Example Instances

Signalering	
DatumVaststelling	18-05-2021
BetrokkenPersonen	
Contactpersoon	
Naam	G.J. Pieterse
Relatie	Echtgenoot
Zorgverlener	
ZorgverlenerRol	Hoofdbehandelaar
Naam	A.S. Janssen
Bejegening	
Bejegening	Niet tegen me schreeuwen - me niet vastpakken
Toelichting	Ik heb een klein sociaal netwerk en ik zal niet snel zelf om hulp vragen
Fase	
WaarnemingPatient	Ik voel me goed - ik ben vrolijk - ik heb muziek in mijn hoofd
WaarnemingAnderen	Ik fluit of neurie
ActiePatient	Ik beseef me dat het goed met me gaat
ActieAnderen	Benoem wat je ziet en label dit positief
FaseNaam	Groen
Fase	
WaarnemingPatient	Ik ben prikkelbaar en snel op mijn teentjes getrapt
WaarnemingAnderen	Stemming is neerslachtig - ik wil mijn medicatie niet innemen
ActiePatient	Situaties vermijden waarin de muziek hard staat
ActieAnderen	Gesprek aangaan, bezorgdheid benoemen
FaseNaam	Oranje

## 1.9 Instructions

### 1.10 Interpretation

### 1.11 Care Process

### 1.12 Example of the Instrument

### 1.13 Constraints



## 1.14 Issues

## 1.15 References

## 1.16 Functional Model

## 1.17 Traceability to other Standards

## 1.18 Disclaimer

The Health and Care Information Models (a.k.a Clinical Building Block) has been made in collaboration with several different parties in healthcare. These parties asked Nictiz to manage good maintenance and development of the information models. Hereafter, these parties and Nictiz are referred to as the collaborating parties. The collaborating parties paid utmost attention to the reliability and topicality of the data in these Health and Care Information Models. Omissions and inaccuracies may however occur. The collaborating parties are not liable for any damages resulting from omissions or inaccuracies in the information provided, nor are they liable for damages resulting from problems caused by or inherent to distributing information on the internet, such as malfunctions, interruptions, errors or delays in information or services provide by the parties to you or by you to the parties via a website or via e-mail, or any other digital means. The collaborating parties will also not accept liability for any damages resulting from the use of data, advice or ideas provided by or on behalf of the parties by means of the Health and Care Information Models. The parties will not accept any liability for the content of information in this Health and Care Information Model to which or from which a hyperlink is referred. In the event of contradictions in mentioned Health and Care Information Model documents and files, the most recent and highest version of the listed order in the revisions will indicate the priority of the documents in question. If information included in the digital version of a Health and Care Information Model is also distributed in writing, the written version will be leading in case of textual differences. This will apply if both have the same version number and date. A definitive version has priority over a draft version. A revised version has priority over previous versions.

## 1.19 Terms of Use

The user may use the Health and Care Information Models without limitations. The copyright provisions in the paragraph concerned apply to copying, distributing and passing on the Health and Care Information Models.

## 1.20 Copyrights

A Health and Care Information Model qualifies as a work within the meaning of Section 10 of the Copyright Act (Auteurswet). Copyrights protect the Health and Care Information Models and these rights are owned by the cooperating parties.

The user may copy, distribute and pass on the information in this Health and Care Information Model under the conditions that apply for Creative Commons license Attribution-NonCommercial-ShareAlike 3.0 Netherlands (CC BY-NC-SA-3.0).

The content is available under Creative Commons Attribution-NonCommercial-ShareAlike 3.0 (see also <http://creativecommons.org/licenses/by-nc-sa/3.0/nl/>)

This does not apply to information from third parties that sometimes is used and / or referred to in a Health and Care Information Model, for example to an international medical terminology system. Any (copyright) rights that protect this information are not owned by the cooperating parties but by those third parties.



Nictiz is the independent national competence centre for electronic exchange of health and care information. The activities of Nictiz include the targeted development and management of information standards at the request of and in partnership with the stakeholders in healthcare. Nictiz advises these parties on all aspects of information exchange and identifies (future) national and international developments.

**Nictiz**

P.O. Box 19121  
2500 CC Den Haag  
Oude Middenweg 55  
2491 AC Den Haag

070-3173450  
[info@nictiz.nl](mailto:info@nictiz.nl)  
[www.nictiz.nl](http://www.nictiz.nl)



