

# Health & Care Information Model: nl.zorg.GeneralMeasurement-v3.0

Status:Final

Release:2019

Release status: Prepublished

Managed by:



# Content

<b>1. nl.zorg.GeneralMeasurement-v3.0</b>	<b>3</b>
1.1 Revision History	3
1.2 Concept	3
1.3 Mindmap	3
1.4 Purpose	3
1.5 Patient Population	3
1.6 Evidence Base	3
1.7 Information Model	4
1.8 Example Instances	7
1.9 Instructions	7
1.10 Interpretation	7
1.11 Care Process	7
1.12 Example of the Instrument	7
1.13 Constraints	7
1.14 Issues	7
1.15 References	7
1.16 Functional Model	7
1.17 Traceability to other Standards	7
1.18 Disclaimer	7
1.19 Terms of Use	8
1.20 Copyrights	8

# 1. nl.zorg.GeneralMeasurement-v3.0

DCM::CoderList	Werkgroep RadB Verpleegkundige Gegevens
DCM::ContactInformation.Address	*
DCM::ContactInformation.Name	*
DCM::ContactInformation.Telecom	*
DCM::ContentAuthorList	Werkgroep RadB Verpleegkundige Gegevens
DCM::CreationDate	14-3-2014
DCM::DescriptionLanguage	nl
DCM::EndorsingAuthority.Address	
DCM::EndorsingAuthority.Name	PM
DCM::EndorsingAuthority.Telecom	
DCM::Id	2.16.840.1.113883.2.4.3.11.60.40.3.13.3
DCM::KeywordList	Algemene meting
DCM::LifecycleStatus	Final
DCM::ModelerList	Werkgroep RadB Verpleegkundige Gegevens
DCM::Name	nl.zorg.AlgemeneMeting
DCM::PublicationDate	06-07-2019
DCM::PublicationStatus	Prepublished
DCM::ReviewerList	Projectgroep RadB Verpleegkundige Gegevens & Kerngroep Registratie aan de Bron
DCM::RevisionDate	31-12-2017
DCM::Superseeds	nl.nfu.AlgemeneMeting-v1.0
DCM::Version	3.0
HCIM::PublicationLanguage	EN

## 1.1 Revision History

Publicatieversie 1.0 (01-07-2015)

Publicatieversie 3.0 (01-05-2016)

Bevat: ZIB-453

## 1.2 Concept

A general measurement determines the result of a measurement or determination made for a patient. The information model is used to record the measurement results for which no specific information models have yet been formulated. The information model is not intended for laboratory determinations to be carried out on the material taken from the patient.

## 1.3 Mindmap

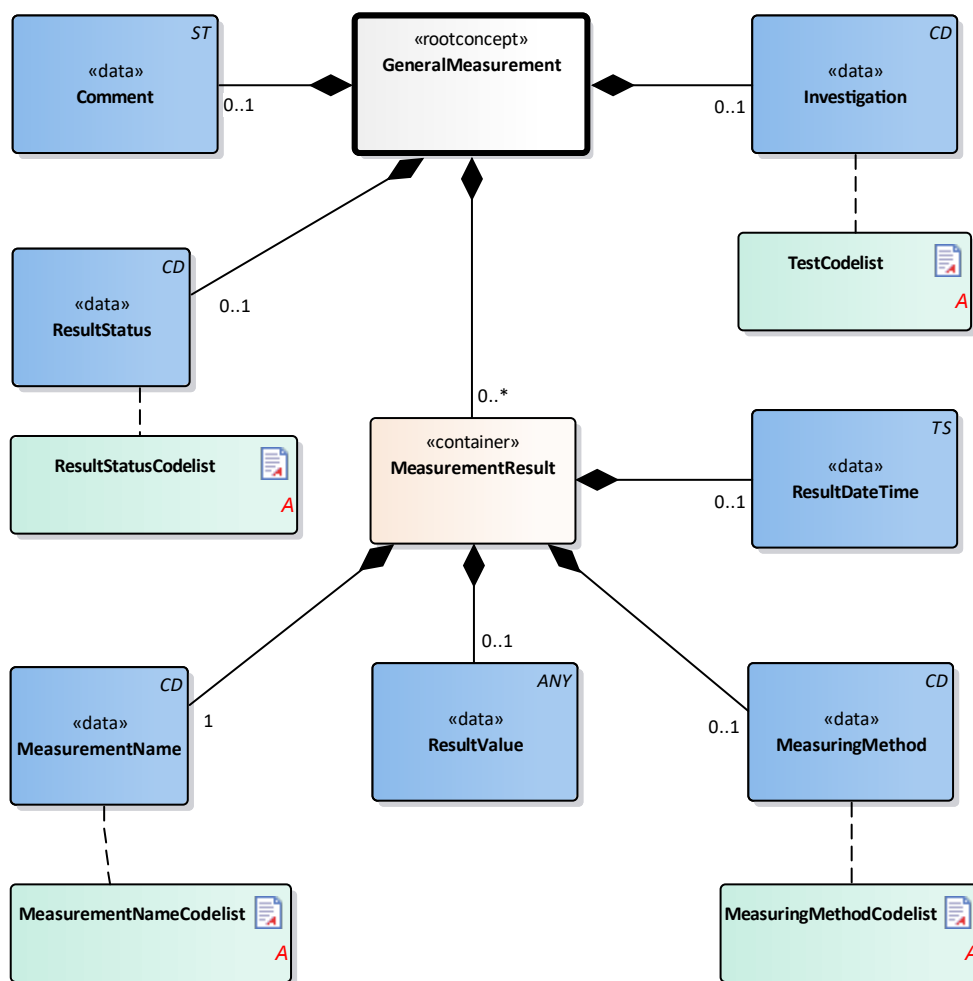
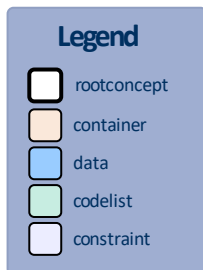
## 1.4 Purpose

The measurement and documentation of physiological observations are an important tool for evaluating a patient's condition. This information model offers the option to record various relevant measurement values.

## 1.5 Patient Population

## 1.6 Evidence Base

## 1.7 Information Model



«rootconcept»	GeneralMeasurement	
<b>Definitie</b>	Root concept of the GeneralMeasurement information model. This root concept contains all data elements of the GeneralMeasurement information model.	
<b>Datatype</b>		
<b>DCM::ConceptId</b>	NL-CM:13.3.1	
<b>Opties</b>		

«data»	Investigation	
<b>Definitie</b>	A general measurement can contain multiple components. This concept contains the name and code of the entire measurement. The components are represented in one or more MeasurementResult concepts.	
<b>Datatype</b>	CD	
<b>DCM::ConceptId</b>	NL-CM:13.3.2	
<b>DCM::ValueSet</b>	TestCodelist	OID: 2.16.840.1.113883.2.4.3.11.60.40.2.13.3.3
<b>Opties</b>		

«data»	ResultStatus	
<b>Definitie</b>	The status of the total measurement.	

<b>Datatype</b>	CD	
<b>DCM::ConceptId</b>	NL-CM:13.3.3	
<b>DCM::ExampleValue</b>	Definitief	
<b>DCM::ValueSet</b>	ResultStatusCodelist	OID: 2.16.840.1.113883.2.4.3.11.60.40.2.13.3.1
<b>Opties</b>		

<b>«data»</b>	<b>Comment</b>	
<b>Definitie</b>	Comments such as an interpretation or advice accompanying the result.	
<b>Datatype</b>	ST	
<b>DCM::ConceptId</b>	NL-CM:13.3.4	
<b>DCM::DefinitionCode</b>	LOINC: 48767-8 Annotation comment	
<b>Opties</b>		

<b>«container»</b>	<b>MeasurementResult</b>	
<b>Definitie</b>	Container of the MeasurementResult concept. This container contains all data elements of the MeasurementResult concept.	
<b>Datatype</b>		
<b>DCM::ConceptId</b>	NL-CM:13.3.5	
<b>Opties</b>		

<b>«data»</b>	<b>MeasurementName</b>	
<b>Definitie</b>	Description (name and code) of the measurement.	
<b>Datatype</b>	CD	
<b>DCM::ConceptId</b>	NL-CM:13.3.6	
<b>DCM::ValueSet</b>	MeasurementNameCodelist	OID: 2.16.840.1.113883.2.4.3.11.60.40.2.13.3.2
<b>Opties</b>		

<b>«data»</b>	<b>ResultValue</b>	
<b>Definitie</b>	The result of the measurement. Depending on the type of measurement, the result will consist of a value with a unit or a coded value (ordinal or nominal) or of a textual result.	
<b>Datatype</b>	ANY	
<b>DCM::ConceptId</b>	NL-CM:13.3.7	
<b>Opties</b>		

<b>«data»</b>	<b>MeasuringMethod</b>	
<b>Definitie</b>	The test method used to obtain the result.	
<b>Datatype</b>	CD	
<b>DCM::ConceptId</b>	NL-CM:13.3.8	
<b>DCM::ValueSet</b>	MeasuringMethodCodelist	OID: 2.16.840.1.113883.2.4.3.11.60.40.2.13.3.4
<b>Opties</b>		

<b>«data»</b>	<b>ResultDateTime</b>	
<b>Definitie</b>	Date and if possible the time at which the measurement was carried out.	
<b>Datatype</b>	TS	
<b>DCM::ConceptId</b>	NL-CM:13.3.9	
<b>Opties</b>		

<b>«document»</b>	<b>MeasurementNameCodelist</b>	
<b>Definitie</b>		

<b>Datatype</b>		
<b>DCM::ValueSetBinding</b>	Extensible	
<b>DCM::ValueSetId</b>	2.16.840.1.113883.2.4.3.11. 60.40.2.13.3.2	
<b>Opties</b>		
<b>MetingNaamCodelijst</b>		<b>OID: 2.16.840.1.113883.2.4.3.11.60.40.2.13.3.2</b>
Codes	Coding Syst. Name	Coding System OID
Alle waarden	SNOMED CT	2.16.840.1.113883.6.96

<b>«document»</b>	<b>MeasuringMethodCodelist</b>	
<b>Definitie</b>		
<b>Datatype</b>		
<b>DCM::ValueSetBinding</b>	Extensible	
<b>DCM::ValueSetId</b>	2.16.840.1.113883.2.4.3.11. 60.40.2.13.3.4	
<b>Opties</b>		
<b>MeetmethodeCodelijst</b>		<b>OID: 2.16.840.1.113883.2.4.3.11.60.40.2.13.3.4</b>
Codes	Coding Syst. Name	Coding System OID
Alle waarden	SNOMED CT	2.16.840.1.113883.6.96

<b>«document»</b>	<b>TestCodelist</b>	
<b>Definitie</b>		
<b>Datatype</b>		
<b>DCM::ValueSetBinding</b>	Extensible	
<b>DCM::ValueSetId</b>	2.16.840.1.113883.2.4.3.11. 60.40.2.13.3.3	
<b>Opties</b>		
<b>OnderzoekCodelijst</b>		<b>OID: 2.16.840.1.113883.2.4.3.11.60.40.2.13.3.3</b>
Codes	Coding Syst. Name	Coding System OID
Alle waarden	SNOMED CT	2.16.840.1.113883.6.96

<b>«document»</b>	<b>ResultStatusCodelist</b>			
<b>Definitie</b>				
<b>Datatype</b>				
<b>DCM::ValueSetBinding</b>	Extensible			
<b>DCM::ValueSetId</b>	2.16.840.1.113883.2.4.3.11. 60.40.2.13.3.1			
<b>Opties</b>				
<b>ResultaatStatusCodelijst</b>		<b>OID: 2.16.840.1.113883.2.4.3.11.60.40.2.13.3.1</b>		
<b>Concept Name</b>	<b>Concept Code</b>	<b>CodeSys. Name</b>	<b>CodeSystem OID</b>	<b>Description</b>
Pending	pending	ResultaatStatus	2.16.840.1.113883.2.4.3.11.60.40.4.15.1	Uitslag volgt
Preliminary	preliminary	ResultaatStatus	2.16.840.1.113883.2.4.3.11.60.40.4.15.1	Voorlopig
Final	final	ResultaatStatus	2.16.840.1.113883.2.4.3.11.60.40.4.15.1	Definitief
Appended	appended	ResultaatStatus	2.16.840.1.113883.2.4.3.11.60.40.4.15.1	Aanvullend
Corrected	corrected	ResultaatStatus	2.16.840.1.113883.2.4.3.11.60.40.4.15.1	Gecorrigeerd

	<b>Legend</b>
<b>Definitie</b>	

<b>Datatype</b>	
<b>Opties</b>	

## 1.8 Example Instances

MeetUitslag			Toelichting	ResultaatStatus
MetingNaam	UitslagWaarde	UitslagDatumTijd		
Delirium observatie screening (DOS)	7	12-03-2014	Waarschijnlijk delier	Definitief

## 1.9 Instructions

### 1.10 Interpretation

### 1.11 Care Process

### 1.12 Example of the Instrument

### 1.13 Constraints

### 1.14 Issues

### 1.15 References

### 1.16 Functional Model

### 1.17 Traceability to other Standards

### 1.18 Disclaimer

The Health and Care Information Models (a.k.a Clinical Building Block) has been made in collaboration with several different parties in healthcare. These parties asked Nictiz to manage good maintenance and development of the information models. Hereafter, these parties and Nictiz are referred to as the collaborating parties. The collaborating parties paid utmost attention to the reliability and topicality of the data in these Health and Care Information Models. Omissions and inaccuracies may however occur. The collaborating parties are not liable for any damages resulting from omissions or inaccuracies in the

information provided, nor are they liable for damages resulting from problems caused by or inherent to distributing information on the internet, such as malfunctions, interruptions, errors or delays in information or services provided by the parties to you or by you to the parties via a website or via e-mail, or any other digital means. The collaborating parties will also not accept liability for any damages resulting from the use of data, advice or ideas provided by or on behalf of the parties by means of the Health and Care Information Models. The parties will not accept any liability for the content of information in this Health and Care Information Model to which or from which a hyperlink is referred. In the event of contradictions in mentioned Health and Care Information Model documents and files, the most recent and highest version of the listed order in the revisions will indicate the priority of the documents in question. If information included in the digital version of a Health and Care Information Model is also distributed in writing, the written version will be leading in case of textual differences. This will apply if both have the same version number and date. A definitive version has priority over a draft version. A revised version has priority over previous versions.

## **1.19 Terms of Use**

The user may use the Health and Care Information Models without limitations. The copyright provisions in the paragraph concerned apply to copying, distributing and passing on the Health and Care Information Models.

## **1.20 Copyrights**

A Health and Care Information Model qualifies as a work within the meaning of Section 10 of the Copyright Act (Auteurswet). Copyrights protect the Health and Care Information Models and these rights are owned by the cooperating parties.

The user may copy, distribute and pass on the information in this Health and Care Information Model under the conditions that apply for Creative Commons license Attribution-NonCommercial-ShareAlike 3.0 Netherlands (CC BY-NC-SA-3.0).

The content is available under Creative Commons Attribution-NonCommercial-ShareAlike 3.0 (see also <http://creativecommons.org/licenses/by-nc-sa/3.0/nl/>)

This does not apply to information from third parties that sometimes is used and / or referred to in a Health and Care Information Model, for example to an international medical terminology system. Any (copyright) rights that protect this information are not owned by the cooperating parties but by those third parties.