

Health & Care Information Model: nl.nfu.PainPerception-v1.0

Status:Final

Release:2015

Release status: Published

Managed by:

Better health
through better IT

Nictiz 

Content

1. nl.nfu.PainPerception-v1.0	3
1.1 Revision History	3
1.2 Concept	3
1.3 Mindmap	3
1.4 Purpose	3
1.5 Patient Population	3
1.6 Evidence Base	3
1.7 Information Model	4
1.8 Example Instances	6
1.9 Instructions	6
1.10 Interpretation	6
1.11 Care Process	6
1.12 Example of the Instrument	6
1.13 Constraints	6
1.14 Issues	7
1.15 References	7
1.16 Functional Model	7
1.17 Traceability to other Standards	7
1.18 Disclaimer	7
1.19 Terms of Use	7
1.20 Copyrights	8

1. nl.nfu.PainPerception-v1.0

DCM::CoderList	Werkgroep RadB Verpleegkundige Gegevens
DCM::ContactInformation.Address	*
DCM::ContactInformation.Name	*
DCM::ContactInformation.Telecom	*
DCM::ContentAuthorList	Werkgroep RadB Verpleegkundige Gegevens
DCM::CreationDate	7-7-2014
DCM::DeprecatedDate	
DCM::DescriptionLanguage	nl
DCM::EndorsingAuthority.Address	
DCM::EndorsingAuthority.Name	NFU & V&VN
DCM::EndorsingAuthority.Telecom	
DCM::Id	2.16.840.1.113883.2.4.3.11.60.40.3.12.11
DCM::KeywordList	Pijn, pijnscore, pijnbeleving, vas, nrs
DCM::LifecycleStatus	Final
DCM::ModelerList	Werkgroep RadB Verpleegkundige Gegevens
DCM::Name	nl.nfu.PijnBeleving
DCM::PublicationDate	8-9-2015
DCM::PublicationStatus	Published
DCM::ReviewerList	Projectgroep RadB Verpleegkundige Gegevens & Kerngroep Registratie aan de Bron
DCM::RevisionDate	8-9-2015
DCM::Superseeds	
DCM::Version	1.0
HCIM::PublicationLanguage	EN

1.1 Revision History

Publicatieversie 1.0 (01-07-2015)

1.2 Concept

Pain experience provides an indication of the pain experienced by the patient that is as comprehensive as possible. This includes not only the extent of the pain but also the context in which the pain is experienced. The extent of pain is recorded using the Numeric Rating Scale (NRS) or the Visual Analogue Score (VAS).

1.3 Mindmap

1.4 Purpose

The focus on the pain, asking for and recording a pain indication can facilitate a better estimate of the severity of the pain and a better evaluation of the effect of a treatment.

1.5 Patient Population

The NRS and VAS are suited for measuring pain among patients of the age of 7 and older.

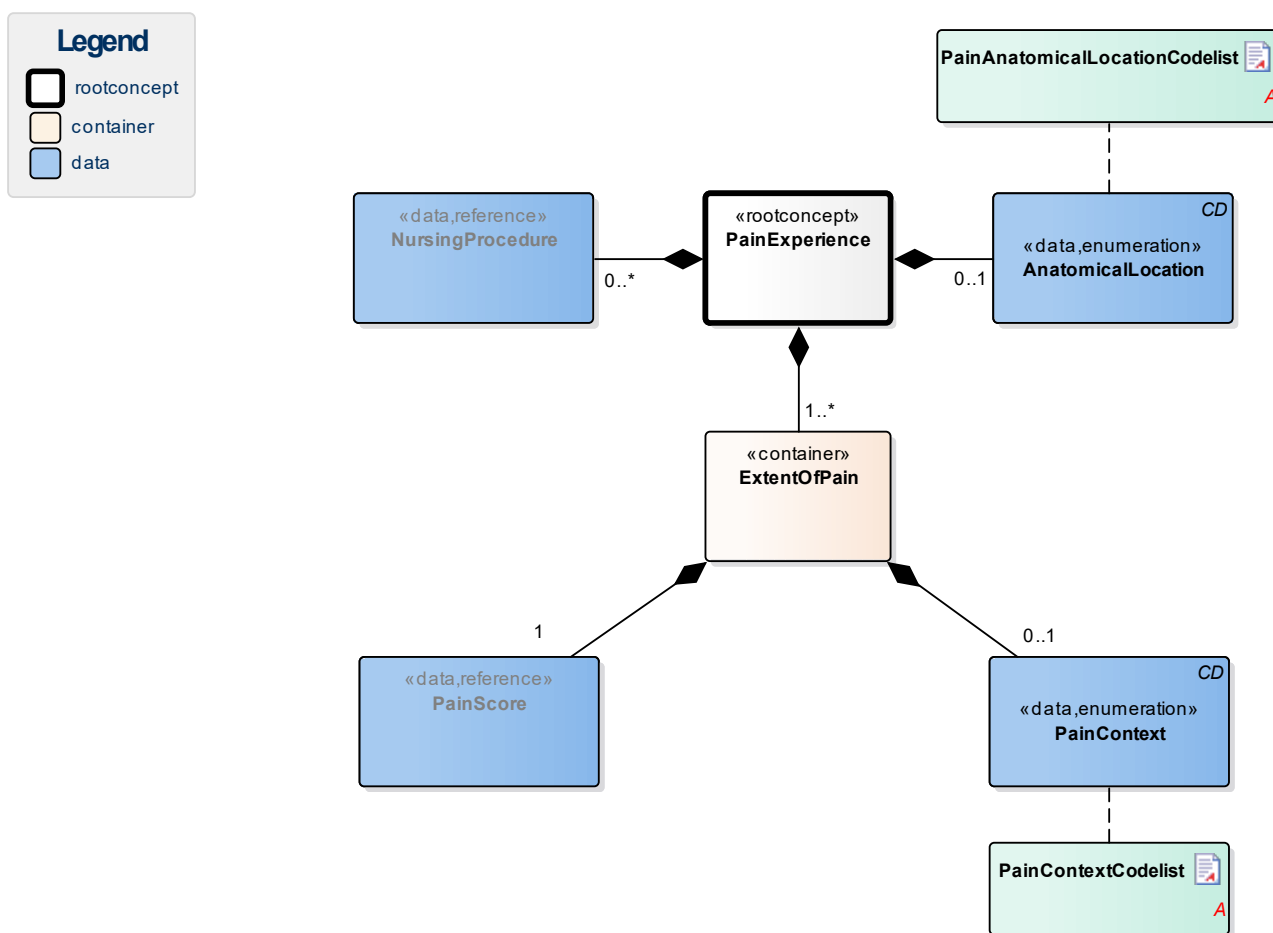
1.6 Evidence Base

For children under the age of 7, we recommend using a different pain scale: the COMFORT behavior scale, the CHIPPS (Children's and Infants' Postoperative Pain Scale), the POKIS (Pain Observation Scale for Young Children), the FLACC (Faces, legs, activity, cry and consolability) and the CHEOPS (Children's Hospital of Eastern Ontario Pain Scale).

(Source: Richtlijn Pijnmeting en Behandeling van pijn bij kinderen [Guideline for Children's Pain Measurement and Treatment].

An observation scale for non-verbal pain behavior can be used for patients for which measuring with NRS is not an option. An example is REPOS, for patients with an expressive language disorder (the Rotterdam Elderly Pain Observation Scale), PACSLAC-D (the Pain Assessment Scale for Seniors with Severe Dementia) and the PAINAD (the Pain Assessment In Advanced Dementia).

1.7 Information Model



«rootconcept»	PainExperience	
Definitie	Root concept of the PainExperience building block. This root concept contains all data elements of the PainExperience building block.	
Datatype		
DCM::ConceptId	NL-CM:12.11.1	
Opties		

«data»	AnatomicalLocation	
Definitie	The location or area of the pain.	
Datatype	CD	

DCM::ConceptId	NL-CM:12.11.2	
DCM::ValueSet	PainAnatomicalLocationCode list	OID: 2.16.840.1.113883.2.4.3.11.60.40.2.12.11.2
Opties		

«data»	NursingProcedure	
Definitie	The description of nursing procedures required to support a patient in pain.	
Datatype		
DCM::ConceptId	NL-CM:12.11.6	
DCM::ReferencedConceptId	NL-CM:14.2.9	This is a reference to concept VerpleegkundigeActie in information model VerpleegkundigeInterventie.
Opties		

«container»	ExtentOfPain	
Definitie	Container of the ExtentOfPain concept. This container contains all data elements of the ExtentOfPain concept.	
Datatype		
DCM::ConceptId	NL-CM:12.11.3	
Opties		

«data»	PainScore	
Definitie	The pain score indicates the extent of the pain experienced by the patient.	
Datatype		
DCM::ConceptId	NL-CM:12.11.5	
DCM::ReferencedConceptId	NL-CM:12.9.1	This is a reference to concept PijnScore in information model Pijnscore.
Opties		

«data»	PainContext	
Definitie	Pain context indicates the context of the pain measurement. You can indicate whether the patient experiences pain when resting, when exercising or otherwise.	
Datatype	CD	
DCM::ConceptId	NL-CM:12.11.4	
DCM::ValueSet	PainContextCodelist	OID: 2.16.840.1.113883.2.4.3.11.60.40.2.12.11.1
Opties		

«document»	PainAnatomicalLocationCodelist	
Definitie		
Datatype		
DCM::ValueSetId	2.16.840.1.113883.2.4.3.11.60.40.2.12.11.2	
Opties		

PijnAnatomischeLocatieCodelijst		OID: 2.16.840.1.113883.2.4.3.11.60.40.2.12.11.2
Codes	Coding Syst. Name	Coding System OID
SNOMED CT: <<91723000 anatomical structure	SNOMED CT	2.16.840.1.113883.6.96

«document»	PainContextCodelist	
Definitie		
Datatype		
DCM::ValueSetId	2.16.840.1.113883.2.4.3.11. 60.40.2.12.11.1	
Opties		

PijnContextCodelijst		OID: 2.16.840.1.113883.2.4.3.11.60.40.2.12.11.1		
Concept Name	Concept Code	CodeSys. Name	CodeSystem OID	Description
Pain onset at rest	428926002	SNOMED CT	2.16.840.1.113883.6.96	Pijn bij rust
Pain onset during exertion	429056000	SNOMED CT	2.16.840.1.113883.6.96	Pijn bij beweging
Other	OTH	NullFlavor	2.16.840.1.113883.5.1008	Anders

1.8 Example Instances

PijnBeleving	
AnatomischeLocatie	Bovenbuik
MateVanPijn	
PijnContext	Pijn bij bewegen
PijnScore	
PijnscoreWaarde	5
PijnscoreDatumTijd	10-09-2014
PijnMeetmethode	VAS10
Toelichting	Zeurende pijn.
VerpleegkundigeActie	
Activiteit	Pijnbestrijding volgens afspraak. Ondersteuning van wond bij hoesten.

1.9 Instructions

1.10 Interpretation

1.11 Care Process

1.12 Example of the Instrument

1.13 Constraints

1.14 Issues

1.15 References

1. Nederlandse Vereniging voor Anesthesiologie. *Richtlijn Postoperatieve pijn*. (2012) [Online] Beschikbaar op: http://www.anesthesiologie.nl/uploads/kwaliteit/Def_RL_Postoperatieve_pijn.pdf [Geraadpleegd: 13 februari 2015]
2. VMS. *Vroege herkenning en behandeling van pijn*. (2009) [Online] Beschikbaar op: http://www.vmszorg.nl/library/5544/web_2009.0109_praktijkids_pijn.pdf [Geraadpleegd: 13 februari 2015]
3. Nederlandse Vereniging voor Kindergeneeskunde. *Richtlijn Pijnmeting en Behandeling van pijn bij kinderen*. (2007) [Online] Beschikbaar op: <http://www.nvk.nl/Portals/0/richtlijnen/pijnmeting/richtlijnpijnmeting.pdf> [Geraadpleegd: 13 februari 2015]

1.16 Functional Model

1.17 Traceability to other Standards

1.18 Disclaimer

The program 'Registratie aan de Bron' [Registration at the Source] is a collaboration between the NFU (Nederlandse Federatie van Universitair Medische Centra, [Netherlands Federation of University Medical Centers]) and Nictiz, hereinafter referred to as the partners. Other parties outside the university medical centers and Nictiz also made important contributions to and worked within 'Registration at the Source'. The parties pay the utmost attention to the reliability and topicality of the data in these Healthcare Information Building Blocks (Clinical Building Block). Omissions and inaccuracies may however occur. The parties are not liable for any damages resulting from omissions or inaccuracies in the information provided, nor are they liable for damages resulting from problems caused by or inherent to distributing information on the internet, such as malfunctions, interruptions, errors or delays in information or services provided by the parties to you or by you to the parties via a website or via e-mail, or any other digital means.

The parties will also not accept liability for any damages resulting from the use of data, advice or ideas provided by or on behalf of the parties by means of this Healthcare Information Building Block. The parties will not accept any liability for the content of information in this Healthcare Information Building Block to which or from which a hyperlink is referred.

In the event of contradictions in said Healthcare Information Building Block documents and files, the most recent and highest version of the listed order in the revisions will indicate the priority of the documents in question. If information included in the digital version of this Healthcare Information Building Block is also distributed in writing, the written version will be leading in cases of textual differences. This will apply if both have the same version number and date. A definitive version has priority over a draft version. A revised version has priority over previous versions.

1.19 Terms of Use

The user may use the information in this Healthcare Information Building Block without limitations. The copyright provisions in the paragraph in question apply to copying, distributing and passing on information from this Healthcare Information Building Block.

1.20 Copyrights

The user may copy, distribute and pass on the information in this Healthcare Information Building Block under the conditions that apply for Creative Commons license Attribution-NonCommercial-ShareAlike 3.0 Netherlands (CC BY-NC-SA-3.0),

The content is available under Creative Commons Attribution-NonCommercial-ShareAlike 3.0 (also see <http://creativecommons.org/licenses/by-nc-sa/3.0/nl/>)