

Health & Care Information Model: nl.zorg.GeneralMeasurement-v3.0

Status:Final

Release:2016

Release status: Published

Managed by:

Better health
through better IT

Nictiz 

Content

| | |
|---|----------|
| 1. nl.zorg.GeneralMeasurement-v3.0 | 3 |
| 1.1 Revision History | 3 |
| 1.2 Concept | 3 |
| 1.3 Mindmap | 3 |
| 1.4 Purpose | 3 |
| 1.5 Patient Population | 3 |
| 1.6 Evidence Base | 4 |
| 1.7 Information Model | 4 |
| 1.8 Example Instances | 7 |
| 1.9 Instructions | 7 |
| 1.10 Interpretation | 7 |
| 1.11 Care Process | 7 |
| 1.12 Example of the Instrument | 7 |
| 1.13 Constraints | 7 |
| 1.14 Issues | 7 |
| 1.15 References | 7 |
| 1.16 Functional Model | 7 |
| 1.17 Traceability to other Standards | 7 |
| 1.18 Disclaimer | 8 |
| 1.19 Terms of Use | 8 |
| 1.20 Copyrights | 8 |

1. nl.zorg.GeneralMeasurement-v3.0

| | |
|---------------------------------|--|
| DCM::CoderList | Werkgroep RadB Verpleegkundige Gegevens |
| DCM::ContactInformation.Address | * |
| DCM::ContactInformation.Name | * |
| DCM::ContactInformation.Telecom | * |
| DCM::ContentAuthorList | Werkgroep RadB Verpleegkundige Gegevens |
| DCM::CreationDate | 14-3-2014 |
| DCM::DescriptionLanguage | nl |
| DCM::EndorsingAuthority.Address | |
| DCM::EndorsingAuthority.Name | PM |
| DCM::EndorsingAuthority.Telecom | |
| DCM::Id | 2.16.840.1.113883.2.4.3.11.60.40.3.13.3 |
| DCM::KeywordList | Algemene meting |
| DCM::LifecycleStatus | Final |
| DCM::ModelerList | Werkgroep RadB Verpleegkundige Gegevens |
| DCM::Name | nl.zorg.AlgemeneMeting |
| DCM::PublicationDate | 1-5-2016 |
| DCM::PublicationStatus | Published |
| DCM::ReviewerList | Projectgroep RadB Verpleegkundige Gegevens & Kerngroep Registratie aan de Bron |
| DCM::RevisionDate | 8-9-2015 |
| DCM::Superseeds | nl.nfu.AlgemeneMeting-v1.0 |
| DCM::Version | 3.0 |
| HCIM::PublicationLanguage | EN |

1.1 Revision History

Publicatieversie 1.0 (01-07-2015)

Publicatieversie 3.0 (01-05-2016)

Bevat: ZIB-453

1.2 Concept

A general measurement determines the result of a measurement or determination made for a patient. The information model is used to record the measurement results for which no specific information models have yet been formulated. The information model is not intended for laboratory determinations to be carried out on the material taken from the patient.

1.3 Mindmap

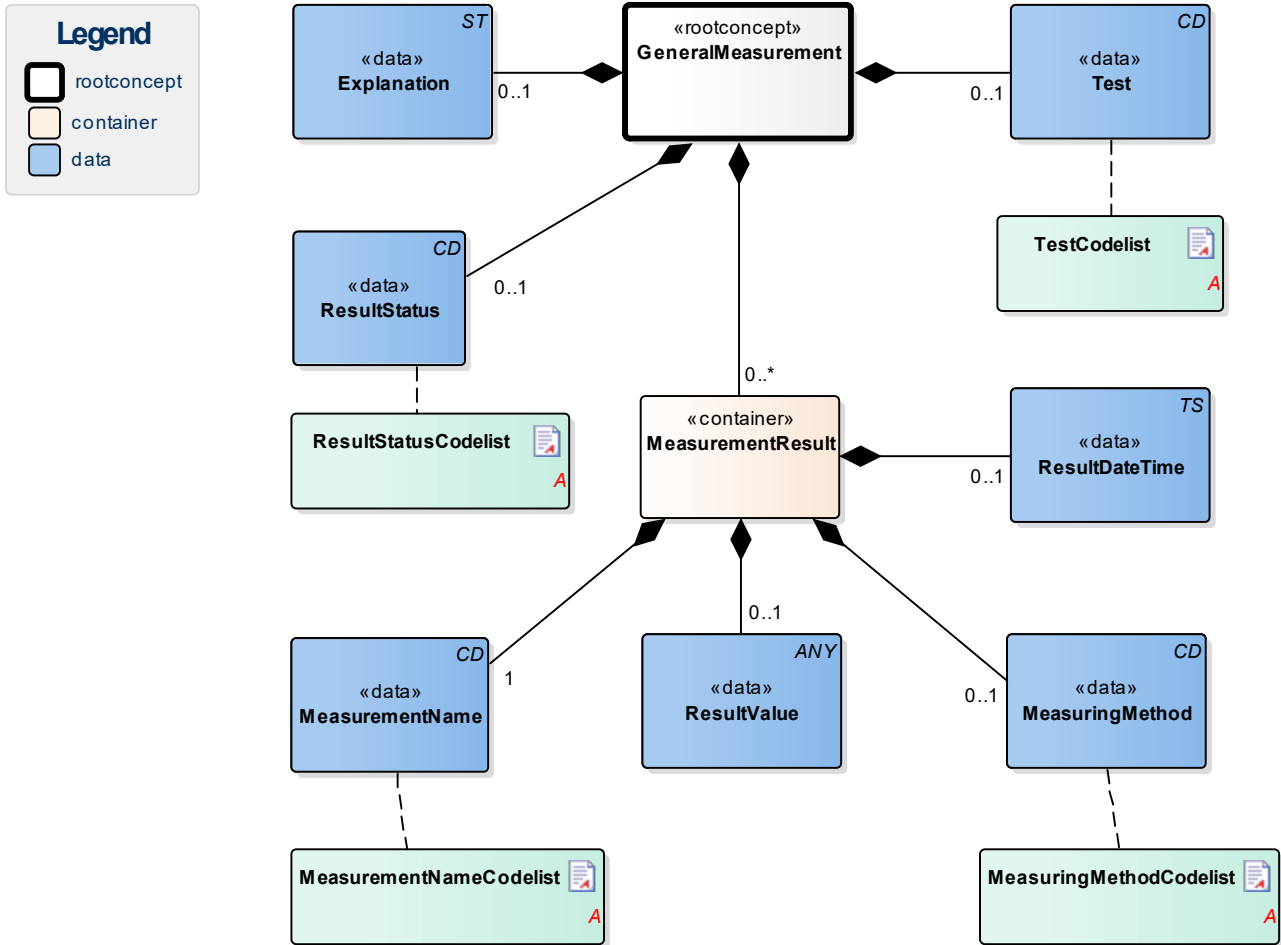
1.4 Purpose

The measurement and documentation of physiological observations are an important tool for evaluating a patient's condition. This information model offers the option to record various relevant measurement values.

1.5 Patient Population

1.6 Evidence Base

1.7 Information Model



| «rootconcept» | GeneralMeasurement | |
|----------------|---|--|
| Definitie | Root concept of the GeneralMeasurement information model. This root concept contains all data elements of the GeneralMeasurement information model. | |
| Datatype | | |
| DCM::ConceptId | NL-CM:13.3.1 | |
| Opties | | |

| «data» | Test | |
|----------------|---|---|
| Definitie | A general measurement can contain multiple components. This concept contains the name and code of the entire measurement. The components are represented in one or more MeasurementResult concepts. | |
| Datatype | CD | |
| DCM::ConceptId | NL-CM:13.3.2 | |
| DCM::ValueSet | TestCodelist | OID: 2.16.840.1.113883.2.4.3.11.60.40.2.13.3.3 |
| Opties | | |

| «data» | ResultStatus | |
|-------------------|--------------------------------------|---|
| Definitie | The status of the total measurement. | |
| Datatype | CD | |
| DCM::ConceptId | NL-CM:13.3.3 | |
| DCM::ExampleValue | Definitief | |
| DCM::ValueSet | ResultStatusCodelist | OID: 2.16.840.1.113883.2.4.3.11.60.40.2.13.3.1 |
| Opties | | |

| «data» | Explanation | |
|---------------------|---|--|
| Definitie | Comments such as an interpretation or advice accompanying the result. | |
| Datatype | ST | |
| DCM::ConceptId | NL-CM:13.3.4 | |
| DCM::DefinitionCode | LOINC: 48767-8 Annotation comment | |
| Opties | | |

| «container» | MeasurementResult | |
|----------------|---|--|
| Definitie | Container of the MeasurementResult concept. This container contains all data elements of the MeasurementResult concept. | |
| Datatype | | |
| DCM::ConceptId | NL-CM:13.3.5 | |
| Opties | | |

| «data» | MeasurementName | |
|----------------|---|---|
| Definitie | Description (name and code) of the measurement. | |
| Datatype | CD | |
| DCM::ConceptId | NL-CM:13.3.6 | |
| DCM::ValueSet | MeasurementNameCodelist | OID: 2.16.840.1.113883.2.4.3.11.60.40.2.13.3.2 |
| Opties | | |

| «data» | ResultValue | |
|----------------|---|--|
| Definitie | The result of the measurement. Depending on the type of measurement, the result will consist of a value with a unit or a coded value (ordinal or nominal) or of a textual result. | |
| Datatype | ANY | |
| DCM::ConceptId | NL-CM:13.3.7 | |
| Opties | | |

| «data» | MeasuringMethod | |
|----------------|--|---|
| Definitie | The test method used to obtain the result. | |
| Datatype | CD | |
| DCM::ConceptId | NL-CM:13.3.8 | |
| DCM::ValueSet | MeasuringMethodCodelist | OID: 2.16.840.1.113883.2.4.3.11.60.40.2.13.3.4 |
| Opties | | |

| «data» | ResultDateTime | |
|----------------|---|--|
| Definitie | Date and if possible the time at which the measurement was carried out. | |
| Datatype | TS | |
| DCM::ConceptId | NL-CM:13.3.9 | |
| Opties | | |

| «document» | MeasurementNameCodelist | |
|-----------------|---|--|
| Definitie | | |
| Datatype | | |
| DCM::ValueSetId | 2.16.840.1.113883.2.4.3.11. 60.40.2.13.3.2 | |
| Opties | | |

| MetingNaamCodelijst | | OID: 2.16.840.1.113883.2.4.3.11.60.40.2.13.3.2 |
|---------------------|-------------------|---|
| Codes | Coding Syst. Name | Coding System OID |
| Alle waarden | SNOMED CT | 2.16.840.1.113883.6.96 |

| «document» | MeasuringMethodCodelist | |
|-----------------|---|--|
| Definitie | | |
| Datatype | | |
| DCM::ValueSetId | 2.16.840.1.113883.2.4.3.11. 60.40.2.13.3.4 | |
| Opties | | |

| MeetmethodeCodelijst | | OID: 2.16.840.1.113883.2.4.3.11.60.40.2.13.3.4 |
|----------------------|-------------------|---|
| Codes | Coding Syst. Name | Coding System OID |
| Alle waarden | SNOMED CT | 2.16.840.1.113883.6.96 |

| «document» | TestCodelist | |
|-----------------|---|--|
| Definitie | | |
| Datatype | | |
| DCM::ValueSetId | 2.16.840.1.113883.2.4.3.11. 60.40.2.13.3.3 | |
| Opties | | |

| OnderzoekCodelijst | | OID: 2.16.840.1.113883.2.4.3.11.60.40.2.13.3.3 |
|--------------------|-------------------|---|
| Codes | Coding Syst. Name | Coding System OID |
| Alle waarden | SNOMED CT | 2.16.840.1.113883.6.96 |

| «document» | ResultStatusCodelist | |
|-----------------|---|--|
| Definitie | | |
| Datatype | | |
| DCM::ValueSetId | 2.16.840.1.113883.2.4.3.11. 60.40.2.13.3.1 | |
| Opties | | |

| ResultaatStatusCodelijst | | OID: 2.16.840.1.113883.2.4.3.11.60.40.2.13.3.1 | | |
|--------------------------|--------------|--|----------------|-------------|
| Concept Name | Concept Code | CodeSys. Name | CodeSystem OID | Description |

| | | | | |
|-------------|-------------|-----------------|---|---------------|
| Pending | pending | ResultaatStatus | 2.16.840.1.113883.2.4.3.11.60.40.4.15.1 | Uitslag volgt |
| Preliminary | preliminary | ResultaatStatus | 2.16.840.1.113883.2.4.3.11.60.40.4.15.1 | Voorlopig |
| Final | final | ResultaatStatus | 2.16.840.1.113883.2.4.3.11.60.40.4.15.1 | Definitief |
| Appended | appended | ResultaatStatus | 2.16.840.1.113883.2.4.3.11.60.40.4.15.1 | Aanvullend |
| Corrected | corrected | ResultaatStatus | 2.16.840.1.113883.2.4.3.11.60.40.4.15.1 | Gecorrigeerd |

1.8 Example Instances

| MeetUitslag | | | Toelichting | ResultaatStatus |
|-------------------------------------|---------------|------------------|-----------------------|-----------------|
| MetingNaam | UitslagWaarde | UitslagDatumTijd | | |
| Delirium observatie screening (DOS) | 7 | 12-03-2014 | Waarschijnlijk delier | Definitief |

1.9 Instructions

1.10 Interpretation

1.11 Care Process

1.12 Example of the Instrument

1.13 Constraints

1.14 Issues

1.15 References

1.16 Functional Model

1.17 Traceability to other Standards

1.18 Disclaimer

This Health and Care Information Model (a.k.a Clinical Building Block) has been made in collaboration with several different parties in healthcare. These parties asked Nictiz to manage good maintenance and development of the information models. Hereafter, these parties and Nictiz are referred to as the collaborating parties. The collaborating parties paid utmost attention to the reliability and topicality of the data in these Health and Care Information Models. Omissions and inaccuracies may however occur. The collaborating parties are not liable for any damages resulting from omissions or inaccuracies in the information provided, nor are they liable for damages resulting from problems caused by or inherent to distributing information on the internet, such as malfunctions, interruptions, errors or delays in information or services provide by the parties to you or by you to the parties via a website or via e-mail, or any other digital means. The collaborating parties will also not accept liability for any damages resulting from the use of data, advice or ideas provided by or on behalf of the parties by means of this Health and Care Information Model. The parties will not accept any liability for the content of information in this Health and Care Information Model to which or from which a hyperlink is referred. In the event of contradictions in mentioned Health and Care Information Model documents and files, the most recent and highest version of the listed order in the revisions will indicate the priority of the documents in question. If information included in the digital version of this Health and Care Information Model is also distributed in writing, the written version will be leading in case of textual differences. This will apply if both have the same version number and date. A definitive version has priority over a draft version. A revised version has priority over previous versions.

1.19 Terms of Use

The user may use the information in this Health and Care Information Model without limitations. The copyright provisions in the paragraph concerned apply to copying, distributing and passing on information from this Health and Care Information Model.

1.20 Copyrights

The user may copy, distribute and pass on the information in this Health and Care Information Model under the conditions that apply for Creative Commons license Attribution-NonCommercial-ShareAlike 3.0 Netherlands (CC BY-NC-SA-3.0). The content is available under Creative Commons Attribution-NonCommercial-ShareAlike 3.0 (see also <http://creativecommons.org/licenses/by-nc-sa/3.0/nl/>)