

Health & Care Information Model:

nl.zorg.MultidisciplinaryTeamMeeting-v1.

1

Status: Final

Release: 2021

Release status: Prepublished

Managed by:



Content

| | |
|---|----------|
| 1. nl.zorg.MultidisciplinaryTeamMeeting-v1.1 | 4 |
| 1.1 Revision History | 4 |
| 1.2 Concept | 4 |
| 1.3 Mindmap | 4 |
| 1.4 Purpose | 4 |
| 1.5 Patient Population | 4 |
| 1.6 Evidence Base | 5 |
| 1.7 Information Model | 5 |
| 1.8 Example Instances | 8 |
| 1.9 Instructions | 9 |
| 1.10 Interpretation | 9 |
| 1.11 Care Process | 9 |
| 1.12 Example of the Instrument | 9 |
| 1.13 Constraints | 9 |
| 1.14 Issues | 9 |
| 1.15 References | 9 |
| 1.16 Functional Model | 9 |
| 1.17 Traceability to other Standards | 9 |
| 1.18 Disclaimer | 9 |
| 1.19 Terms of Use | 10 |
| 1.20 Copyrights | 10 |

1. nl.zorg.MultidisciplinaryTeamMeeting-v1.1

| | |
|---------------------------------|---|
| DCM::CoderList | |
| DCM::ContactInformation.Address | * |
| DCM::ContactInformation.Name | * |
| DCM::ContactInformation.Telecom | * |
| DCM::ContentAuthorList | |
| DCM::CreationDate | 10-04-2020 |
| DCM::DeprecatedDate | |
| DCM::DescriptionLanguage | nl |
| DCM::EndorsingAuthority.Address | |
| DCM::EndorsingAuthority.Name | NFU |
| DCM::EndorsingAuthority.Telecom | |
| DCM::Id | 2.16.840.1.113883.2.4.3.11.60.40.3.15.2 |
| DCM::KeywordList | Patiëntbespreking, MDO |
| DCM::LifecycleStatus | Final |
| DCM::ModelerList | |
| DCM::Name | nl.zorg.Patientbespreking |
| DCM::PublicationDate | 01-12-2021 |
| DCM::PublicationStatus | Prepublished |
| DCM::ReviewerList | |
| DCM::RevisionDate | 11-08-2021 |
| DCM::Supersedes | nl.zorg.Patientbespreking-v1.0 |
| DCM::Version | 1.1 |
| HCIM::PublicationLanguage | EN |

1.1 Revision History

Publicatieversie 1.0 (01-09-2020)

Publicatieversie 1.1 (01-12-2021)

Bevat: ZIB-1412, ZIB-1425, ZIB-1493, ZIB-1514.

1.2 Concept

A multidisciplinary team meeting is a meeting of health care providers in which the results of examinations and treatment are discussed with the aim of formulating joint advice for the treatment of the patient. A patient can also be present. When healthcare professionals from various disciplines participate, and this is structurally organized (local, regional, sub regional or through a partnership), this is often referred to as a multi-disciplinary consultation .

1.3 Mindmap

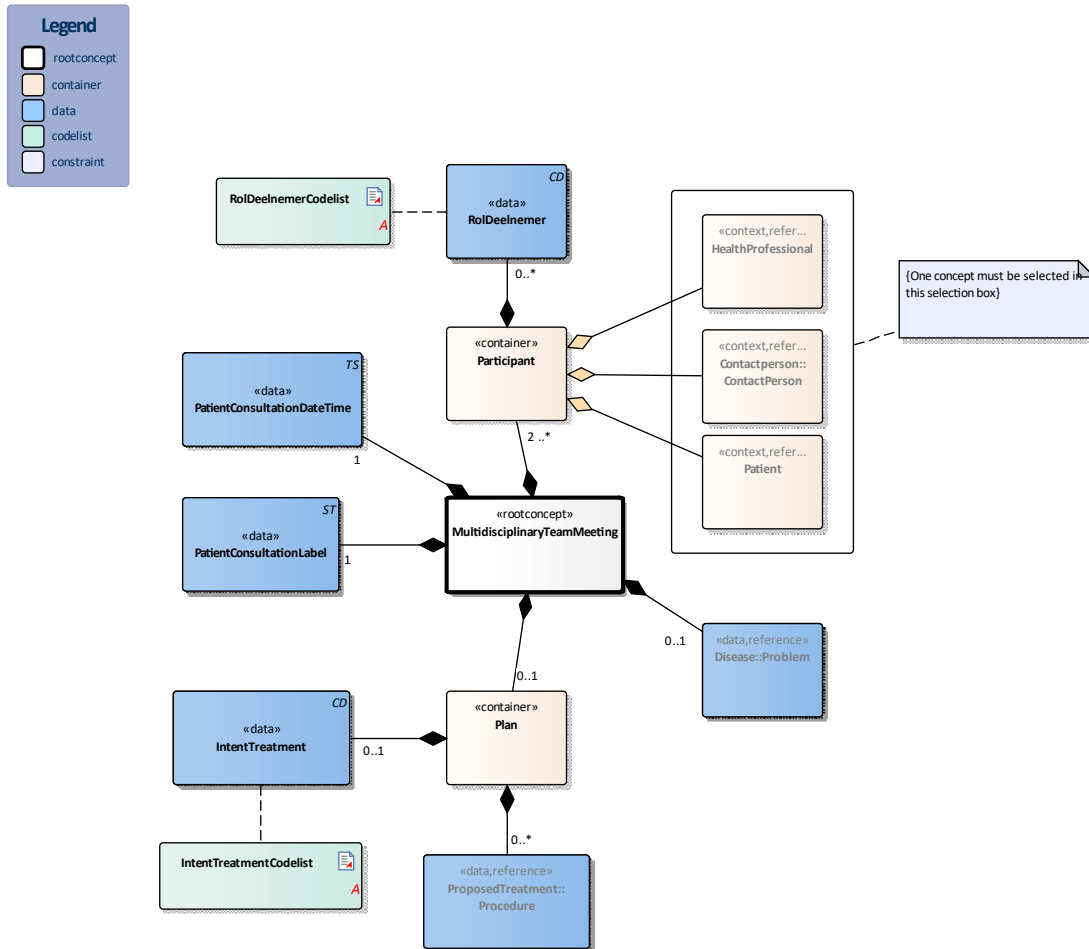
1.4 Purpose

The aim of the multidisciplinary team meeting is to evaluate the health status of the patient and to align subsequent policy for optimal treatment with care providers of all disciplines relevant for the patient's problem. Participants use results of diagnostic procedures and treatment as well as the latest (scientific) insights for the treatment of the patient's problem.

1.5 Patient Population

1.6 Evidence Base

1.7 Information Model



| «rootconcept» | MultidisciplinaryTeamMeeting | |
|----------------------------|---|--|
| Definitie | Root concept of the MultidisciplinaryTeamMeeting information model. This root concept contains all data elements of the MultidisciplinaryTeamMeeting information model. | |
| Datatype | | |
| DCM::ConceptId | NL-CM:15.2.1 | |
| DCM::DefinitionCode | SNOMED CT: 384682003 Multidisciplinary care conference | |
| Opties | | |

| «data» | PatientConsultationLabel | |
|-----------------------|---|--|
| Definitie | The name used to identify the particular patient consultation, e.g. MDC head and neck cancer. | |
| Datatype | | |
| DCM::ConceptId | NL-CM:15.2.5 | |

| | |
|---------------|--|
| Opties | |
|---------------|--|

| | |
|----------------------------|--|
| «data» | PatientConsultationDateTime |
| Definitie | The date (and time) the patient consultation is scheduled or took place. |
| Datatype | |
| DCM::ConceptId | NL-CM:15.2.6 |
| DCM::DefinitionCode | SNOMED CT: 439771001 Date of event |
| Opties | |

| | |
|-----------------------|--|
| «container» | Participant |
| Definitie | Container of the Participant concept.This container contains all data elements of the Participant concept. |
| Datatype | |
| DCM::ConceptId | NL-CM:15.2.13 |
| Opties | |

| | |
|-----------------------|---|
| «data» | RolDeelnemer |
| Definitie | Role of the person in the patient meeting, for example chairman, expert, notifier, secretary. |
| Datatype | |
| DCM::ConceptId | NL-CM:15.2.14 |
| DCM::ValueSet | RolDeelnemerCodelist OID: 2.16.840.1.113883.2.4.3.11.60.40.2.15.2.2 |
| Opties | |

| | |
|---------------------------------|---|
| «context» | HealthProfessional |
| Definitie | Health professional as participant of the patient consultation. |
| Datatype | |
| DCM::ConceptId | NL-CM:15.2.3 |
| DCM::ExampleValue | Klinisch geneticus |
| DCM::ReferencedConceptId | NL-CM:17.1.1 This is a reference to the rootconcept of information model HealthProfessional. |
| Opties | |

| | |
|---------------------------------|---|
| «context» | Contactperson::ContactPerson |
| Definitie | Contactperson as participant of the patient consultation. |
| Datatype | |
| DCM::ConceptId | NL-CM:15.2.15 |
| DCM::ReferencedConceptId | NL-CM:3.1.1 This is a reference to the rootconcept of information model ContactPerson. |
| Opties | |

| | |
|---------------------------------|---|
| «context» | Patient |
| Definitie | The patient as participant of the patient consultation. |
| Datatype | |
| DCM::ConceptId | NL-CM:15.2.16 |
| DCM::ReferencedConceptId | NL-CM:0.1.1 This is a reference to the rootconcept of information model Patient. |
| Opties | |

| | |
|--------------------|--|
| «container» | Plan |
| Definitie | Container of the Plan concept.This container contains all data elements of the Plan concept. |

| | | |
|----------------------------|--------------------------------------|--|
| Datatype | | |
| DCM::ConceptId | NL-CM:15.2.10 | |
| DCM::DefinitionCode | SNOMED CT: 423134005 Plan section | |
| Opties | | |

| | | |
|---------------------------------|-------------------------------------|--|
| «data» | ProposedTreatment::Procedure | |
| Definitie | Proposed treatment. | |
| Datatype | | |
| DCM::ConceptId | NL-CM:15.2.12 | |
| DCM::ReferencedConceptId | NL-CM:14.1.1 | This is a reference to the rootconcept of information model Procedure. |
| Opties | | |

| | | |
|----------------------------|---|---|
| «data» | IntentTreatment | |
| Definitie | Intend of treatment. For instance conform protocol, curative or pain management, trial etc. | |
| Datatype | | |
| DCM::ConceptId | NL-CM:15.2.11 | |
| DCM::DefinitionCode | SNOMED CT: 395077000 Treatment intent | |
| DCM::ExampleValue | true | |
| DCM::ValueSet | IntentTreatmentCodelist | OID: 2.16.840.1.113883.2.4.3.11.60.40.2.15.2.1 |
| Opties | | |

| | | |
|---------------------------------|---|--|
| «data» | Disease::Problem | |
| Definitie | The disease or patient problem that is the reason for the patient consultation. | |
| Datatype | | |
| DCM::ConceptId | NL-CM:15.2.7 | |
| DCM::DefinitionCode | SNOMED CT: 71388002 Procedure | |
| DCM::ExampleValue | Schisis | |
| DCM::ReferencedConceptId | NL-CM:5.1.1 | This is a reference to the rootconcept of information model Problem. |
| Opties | | |

| | | |
|-------------------------------|---|--|
| «document» | IntentTreatmentCodelist | |
| Definitie | | |
| Datatype | | |
| DCM::ValueSetBinding | Extensible | |
| DCM::ValueSetId | 2.16.840.1.113883.2.4.3.11.60.40.2.15.2.1 | |
| HCIM::ValueSetLanguage | -- | |
| Opties | | |

| IntentieBehandelingCodelijst | | | OID: 2.16.840.1.113883.2.4.3.11.60.40.2.15.2.1 | |
|-------------------------------------|---------------------|--------------------------|---|-------------------------------|
| Concept Name | Concept Code | Coding Syst. Name | Coding System OID | Description |
| Following clinical pathway protocol | 370858005 | SNOMED CT | 2.16.840.1.113883.6.96 | Behandeling conform richtlijn |
| Curative procedure intent | 373808002 | SNOMED CT | 2.16.840.1.113883.6.96 | Curatieve behandeling |
| Palliative care | 103735009 | SNOMED CT | 2.16.840.1.113883.6.96 | Palliatieve zorg |

| | | | | |
|--|-----------|------------|--------------------------|---|
| Assessment of eligibility for clinical trial | 450332002 | SNOMED CT | 2.16.840.1.113883.6.96 | Toetsing van inclusiecriteria voor clinical trial |
| Other | OTH | NullFlavor | 2.16.840.1.113883.5.1008 | Anders |

| «document» | | RolDeelnemerCodelist | | |
|-------------------------------|---|----------------------|--|--|
| Definitie | | | | |
| Datatype | | | | |
| DCM::ValueSetBinding | Extensible | | | |
| DCM::ValueSetId | 2.16.840.1.113883.2.4.3.11.60.40.2.15.2.2 | | | |
| HCIM::ValueSetLanguage | NL | | | |
| Opties | | | | |

| RolDeelnemerCodelist | | OID: 2.16.840.1.113883.2.4.3.11.60.40.2.15.2.2 | | |
|----------------------|--------------|--|---|--|
| Concept Name | Concept Code | Coding Syst. Name | Coding System OID | Description |
| voorzitter | VOORZ | RolBespreking | 2.16.840.1.113883.2.4.3.11.60.40.4.26.1 | Voorzitter van de patiëntbespreking |
| aanmelder | AANM | RolBespreking | 2.16.840.1.113883.2.4.3.11.60.40.4.26.1 | Aanmelder van de patiënt bij de bespreking |
| expert | EXPR | RolBespreking | 2.16.840.1.113883.2.4.3.11.60.40.4.26.1 | Inhoudelijk expert bij de bespreking |
| other | OTH | NullFlavor | 2.16.840.1.113883.5.1008 | Anders |

| Constraint | |
|------------------|--|
| Definitie | One concept must be selected in this selection box |
| Datatype | |
| Opties | |

| Legend | |
|------------------|--|
| Definitie | |
| Datatype | |
| Opties | |

1.8 Example Instances

| PatientBespreking | | | | |
|---|--------------------|--|------------------------|---------------------|
| Label | | | | |
| Expertpanel MDO colorectaal | | | | |
| Deelnemers | | | | |
| Naam | Specialisme | Zorgaanbieder | Contactgegevens | DeelnemerRol |
| W. Klaasen | Verpleegkundige | MUMC+ | 043-8547930 | Casemanager |
| Drs. S. Curie | Radioloog | MUMC+ | 043-9263795 | Expert |
| Dr. R. van Heck | Internist-oncoloog | MUMC+ | 043-5388393 | Voorzitter |
| Dr. J. Willems | Chirurg-oncoloog | Laurentius zkh | 0475-645398 | Aanmelder |
| Dr. de Groot | Lever-chirurg | MMC | 040-5921909 | Expert |
| Dr. Stevens | Lever-chirurg | MUMC+ | 043-8748887 | Expert |
| Patient en/of contactpersoon | | | | |
| Dhr. Pieterse | | | 0475 - 228844 | |
| Mw. Pieterse-de Groot | | | 06 - 11114444 | |
| Patient Bespreking DatumTijd | Patient | Aandoening::Probleem | | |
| | | ProbleemNaam | | |
| 25-06-2020 10:15 – 10:30 | Dhr. Pieterse | 781382000 Malignant neoplasm of colon and/or rectum | | |
| Beleid | | | | |
| Intentie Behandeling | | | | |
| Curatief | | | | |
| VoorgesteldeBehandeling::Verrichting | | | | |
| VerrichtingType | Datum | UitgevoerdDoor | Locatie | |
| Partiele leverresectie | 09-2020 | Dr. Stevens | MUMC+ | |

1.9 Instructions

1.10 Interpretation

1.11 Care Process

1.12 Example of the Instrument

1.13 Constraints

1.14 Issues

1.15 References

volgt n

1.16 Functional Model

1.17 Traceability to other Standards

1.18 Disclaimer

The Health and Care Information Models (a.k.a Clinical Building Block) has been made in collaboration with several different parties in healthcare. These parties asked Nictiz to manage good maintenance and

development of the information models. Hereafter, these parties and Nictiz are referred to as the collaborating parties. The collaborating parties paid utmost attention to the reliability and topicality of the data in these Health and Care Information Models. Omissions and inaccuracies may however occur. The collaborating parties are not liable for any damages resulting from omissions or inaccuracies in the information provided, nor are they liable for damages resulting from problems caused by or inherent to distributing information on the internet, such as malfunctions, interruptions, errors or delays in information or services provide by the parties to you or by you to the parties via a website or via e-mail, or any other digital means. The collaborating parties will also not accept liability for any damages resulting from the use of data, advice or ideas provided by or on behalf of the parties by means of the Health and Care Information Models. The parties will not accept any liability for the content of information in this Health and Care Information Model to which or from which a hyperlink is referred. In the event of contradictions in mentioned Health and Care Information Model documents and files, the most recent and highest version of the listed order in the revisions will indicate the priority of the documents in question. If information included in the digital version of a Health and Care Information Model is also distributed in writing, the written version will be leading in case of textual differences. This will apply if both have the same version number and date. A definitive version has priority over a draft version. A revised version has priority over previous versions.

1.19 Terms of Use

The user may use the Health and Care Information Models without limitations. The copyright provisions in the paragraph concerned apply to copying, distributing and passing on the Health and Care Information Models.

1.20 Copyrights

A Health and Care Information Model qualifies as a work within the meaning of Section 10 of the Copyright Act (Auteurswet). Copyrights protect the Health and Care Information Models and these rights are owned by the cooperating parties.

The user may copy, distribute and pass on the information in this Health and Care Information Model under the conditions that apply for Creative Commons license Attribution-NonCommercial-ShareAlike 3.0 Netherlands (CC BY-NC-SA-3.0).

The content is available under Creative Commons Attribution-NonCommercial-ShareAlike 3.0 (see also <http://creativecommons.org/licenses/by-nc-sa/3.0/nl/>)

This does not apply to information from third parties that sometimes is used and / or referred to in a Health and Care Information Model, for example to an international medical terminology system. Any (copyright) rights that protect this information are not owned by the cooperating parties but by those third parties.

Nictiz is the independent national competence centre for electronic exchange of health and care information. The activities of Nictiz include the targeted development and management of information standards at the request of and in partnership with the stakeholders in healthcare. Nictiz advises these parties on all aspects of information exchange and identifies (future) national and international developments.

Nictiz

P.O. Box 19121
2500 CC Den Haag
Oude Middenweg 55
2491 AC Den Haag

070-3173450
info@nictiz.nl
www.nictiz.nl



