

Health & Care Information Model:

nl.zorg.TobaccoUse-v3.5

Status: Final

Release: 2024

Release status: Published

Managed by:



Content

1. nl.zorg.TobaccoUse-v3.5.....	3
1.1 Revision History.....	3
1.2 Concept	4
1.3 Mindmap	4
1.4 Purpose.....	4
1.5 Patient Population	4
1.6 Evidence Base	4
1.7 Information Model	4
1.8 Example Instances.....	7
1.9 Instructions.....	8
1.10 Interpretation.....	8
1.11 Care Process	8
1.12 Example of the Instrument	8
1.13 Constraints.....	8
1.14 Issues	8
1.15 References	8
1.16 Functional Model	8
1.17 Traceability to other Standards.....	8
1.18 Disclaimer	8
1.19 Terms of Use	9
1.20 Copyrights	9

1. nl.zorg.TobaccoUse-v3.5

DCM::CoderList	Kerngroep Registratie aan de Bron
DCM::ContactInformation.Address	*
DCM::ContactInformation.Name	*
DCM::ContactInformation.Telecom	*
DCM::ContentAuthorList	Projectgroep Generieke Overdrachtsgegevens & Kerngroep Registratie aan de Bron
DCM::CreationDate	5-7-2012
DCM::DeprecatedDate	
DCM::DescriptionLanguage	nl
DCM::EndorsingAuthority.Address	
DCM::EndorsingAuthority.Name	PM
DCM::EndorsingAuthority.Telecom	
DCM::Id	2.16.840.1.113883.2.4.3.11.60.40.3.7.2
DCM::KeywordList	social history, sociale anamnese, roken, tabak
DCM::LifecycleStatus	Final
DCM::ModelerList	Kerngroep Registratie aan de Bron
DCM::Name	nl.zorg.TabakGebruik
DCM::PublicationDate	23-04-2025
DCM::PublicationStatus	Published
DCM::ReviewerList	Projectgroep Generieke Overdrachtsgegevens & Kerngroep Registratie aan de Bron
DCM::RevisionDate	04-09-2023
DCM::Supersedes	nl.zorg.TabakGebruik-v3.4
DCM::Version	3.5
HCIM::PublicationLanguage	EN

1.1 Revision History

Publicatieversie 1.0 (15-02-2013)

Publicatieversie 1.1 (01-07-2013)

Publicatieversie 1.2 (01-04-2015)

Bevat: ZIB-118, ZIB-142, ZIB-158, ZIB-167, ZIB-236, ZIB-237, ZIB-308, ZIB-346.

Incl. algemene wijzigingsverzoeken:

ZIB-94, ZIB-154, ZIB-200, ZIB-201, ZIB-309, ZIB-324, ZIB-326.

Publicatieversie 1.2.1 (22-05-2015)

Bevat: ZIB-379.

Publicatieversie 3.0 (01-05-2016)

Bevat: ZIB-453.

Publicatieversie 3.1 (04-09-2017)

Bevat: ZIB-474, ZIB-488, ZIB-505, ZIB-512, ZIB-562, ZIB-564.

Publicatieversie 3.2 (06-07-2019)

Bevat: ZIB-770, ZIB-716, ZIB-811.

Publicatieversie 3.3 (01-12-2021)

Bevat: ZIB_1206, ZIB-1403.

Publicatieversie 3.4 (10-06-2022)

Bevat: ZIB-1700.

1.2 Concept

Tobacco is a product that comes from the leaves of the tobacco plant, which is smoked as a drug. Smokable forms of tobacco include rolling tobacco, cigarettes, cigars and pipe tobacco. This information model describes the information asked of the patient about their use of tobacco.

1.3 Mindmap

1.4 Purpose

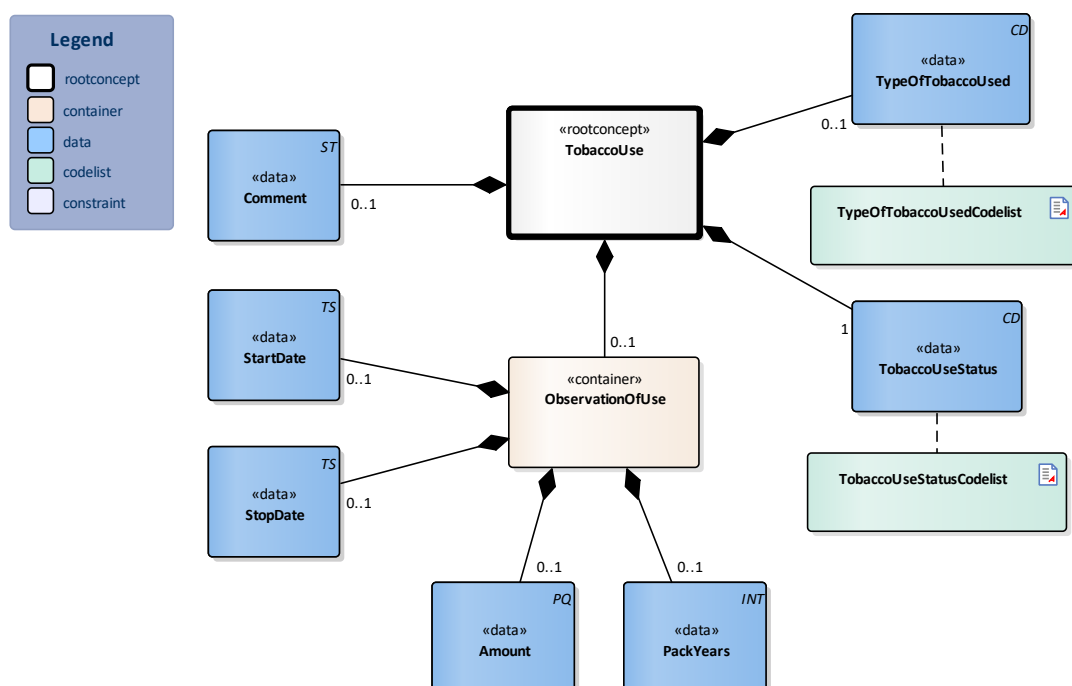
During the social anamnesis, the patient is frequently asked about their use of tobacco or exposure to tobacco smoke at home or elsewhere. Information on tobacco use can be important for treatment and diagnostics.

1.5 Patient Population

1.6 Evidence Base

Exposure to tobacco is an important risk factor for things like neoplasms, degenerative diseases and vascular incidents. During the anamnesis, the patient is often asked about their current smoking pattern and number of pack years. The number of pack years is the unit that describes the total exposure to tobacco smoke, which is the number of smoked packs of cigarettes per day (one pack = 20 cigarettes) times the number of years of smoking. A different formula is often used for rolling tobacco and pipes, with one of the parameters being the number of grams per week.

1.7 Information Model



Definitie	Root concept of the TobaccoUse information model. This concept contains all data elements of the TobaccoUse information model.	
Datatype		
DCM::ConceptId	NL-CM:7.2.1	
DCM::DefinitionCode	SNOMED CT: 365980008 Bevinding betreffende tabakgebruik en blootstelling aan tabaksrook	
Opties		

«data»	Comment	
Definitie	Relevant comments on the patient's use of tobacco.	
Datatype	ST	
DCM::ConceptId	NL-CM:7.2.3	
DCM::DefinitionCode	LOINC: 48767-8 Annotation comment	
DCM::ExampleValue	Patiënt probeert te stoppen, thuis wordt ook door partner gerookt.	
Opties		

«data»	TypeOfTobaccoUsed	
Definitie	Type of tobacco the patient uses.	
Datatype	CD	
DCM::ConceptId	NL-CM:7.2.9	
DCM::DefinitionCode	SNOMED CT: 53661000146106 Type of tobacco used	
DCM::ExampleValue	Rookt sigaretten	
DCM::ValueSet	TypeOfTobaccoUsedCodelist	OID: 2.16.840.1.113883.2.4.3.11.60.40.2.7.2.3
Opties		

«data»	TobaccoUseStatus	
Definitie	The status of the patient's tobacco use.	
Datatype	CD	
DCM::ConceptId	NL-CM:7.2.10	
DCM::DefinitionCode	SNOMED CT: 229819007 Tabaksgebruik en blootstelling aan tabaksrook	
DCM::ExampleValue	Ex-roker	
DCM::ValueSet	TobaccoUseStatusCodelist	OID: 2.16.840.1.113883.2.4.3.11.60.40.2.7.2.2
Opties		

«container»	ObservationOfUse	
Definitie	This container contains all information on the extent to which the patient is or was exposed to tobacco.	
Datatype		
DCM::ConceptId	NL-CM:7.2.2	
Opties		

«data»	StartDate	
Definitie	The date on which the patient started smoking.	
Datatype	TS	

DCM::ConceptId	NL-CM:7.2.4	
DCM::ExampleValue	1975	
Opties		

«data»	StopDate	
Definitie	The date on which the patient quit smoking	
Datatype	TS	
DCM::ConceptId	NL-CM:7.2.5	
DCM::ExampleValue	28-02-2012	
Opties		

«data»	Amount	
Definitie	The number of cigarettes, cigars or grams of rolling tobacco consumed per day, week, month or year.	
Datatype	PQ	
DCM::ConceptId	NL-CM:7.2.6	
DCM::ExampleValue	15/d	
Opties		

«data»	PackYears	
Definitie	The unit indicating the smoker's total exposure to tobacco smoke. For cigarettes, this is calculated using the number of smoked packs of cigarettes per day (one pack = 20 cigarettes) times the number of years of smoking. For other forms of tobacco, this is usually converted to an equivalent cigarette consumption. Often, only the number of pack years is estimated.	
Datatype	INT	
DCM::ConceptId	NL-CM:7.2.7	
DCM::DefinitionCode	SNOMED CT: 401201003 Cigarette pack-years	
DCM::ExampleValue	10	
Opties		

«document»	TypeOfTobaccoUsedCodelist		
Definitie			
Datatype			
DCM::ValueSetBinding	Extensible		
DCM::ValueSetId	2.16.840.1.113883.2.4.3.11.6 0.40.2.7.2.3		
DCM::ValueSetInclude OTH	True		
DCM::ValueSetStatus	Active		
HCIM::ValueSetLanguage	--		
Opties			

SoortTabakGebruikCodelijst			OID: 2.16.840.1.113883.2.4.3.11.60.40.2.7.2.3	
Concept Name	Concept Code	Coding Syst. Name	Coding System OID	Description
Cigarette smoker (finding)	65568007	SNOMED CT	2.16.840.1.113883.6.9 6	Rookt sigaretten
Cigar smoker (finding)	59978006	SNOMED CT	2.16.840.1.113883.6.9 6	Rookt sigaren
Pipe smoker (finding)	82302008	SNOMED CT	2.16.840.1.113883.6.9 6	Rookt pijp
Rolls own	160619003	SNOMED CT	2.16.840.1.113883.6.9	Rookt shag

cigarettes (finding)			6	
Electronic cigarette user (finding)	722499006	SNOMED CT	2.16.840.1.113883.6.96	Rookt e-sigaret
Chews tobacco (finding)	81703003	SNOMED CT	2.16.840.1.113883.6.96	Gebruikt kauwtobak
Hookah pipe smoker	698289004	SNOMED CT	2.16.840.1.113883.6.96	Rookt waterpijp
Snuff user (finding)	228494002	SNOMED CT	2.16.840.1.113883.6.96	Gebruikt snuiftobak

«document»		TobaccoUseStatusCodelist		
Definitie				
Datatype				
DCM::ValueSetBinding	Extensible			
DCM::ValueSetId	2.16.840.1.113883.2.4.3.11.60.40.2.7.2.2			
DCM::ValueSetInclude OTH	True			
DCM::ValueSetStatus	Active			
HCIM::ValueSetLanguage	--			
Opties				
TabakGebruikStatusCodelijst			OID: 2.16.840.1.113883.2.4.3.11.60.40.2.7.2.2	
Concept Name	Concept Code	Coding Syst. Name	Coding System OID	Description
Smokes tobacco daily (finding)	449868002	SNOMED CT	2.16.840.1.113883.6.96	Rookt dagelijks
Occasional tobacco smoker (finding)	428041000124106	SNOMED CT	2.16.840.1.113883.6.96	Rookt soms
Passive smoker (finding)	43381005	SNOMED CT	2.16.840.1.113883.6.96	Rookt passief
Ex-smoker (finding)	8517006	SNOMED CT	2.16.840.1.113883.6.96	Ex-roker
Current non smoker but past smoking history unknown (finding)	405746006	SNOMED CT	2.16.840.1.113883.6.96	Niet-roker, maar rookgedrag in verleden onbekend
Never smoked tobacco (finding)	266919005	SNOMED CT	2.16.840.1.113883.6.96	Nooit gerookt

Legend	
Definitie	
Datatype	
Opties	

1.8 Example Instances

SoortTabak Gebruik	Tabak GebruikStatus	Start Datum	StopDatum	Pack Years	Hoeveelheid	Toelichting
Rookt shag	Rookt dagelijks	1985		20	350 g per week	Probeert te stoppen. Thuis wordt ook door partner gerookt

1.9 Instructions

The pack year is a measure for smokers' exposure to tobacco smoke. The *calculation* is not included in the model. It is entered in the EPD and/or during the anamnesis and is only entered if known. This should not be calculated based on the other values in this clinical information model.

1.10 Interpretation

1.11 Care Process

1.12 Example of the Instrument

1.13 Constraints

1.14 Issues

1.15 References

1.16 Functional Model

1.17 Traceability to other Standards

1.18 Disclaimer

The Health and Care Information Models (a.k.a Clinical Building Block) has been made in collaboration with several different parties in healthcare. These parties asked Nictiz to manage good maintenance and development of the information models. Hereafter, these parties and Nictiz are referred to as the collaborating parties. The collaborating parties paid utmost attention to the reliability and topicality of the data in these Health and Care Information Models. Omissions and inaccuracies may however occur. The collaborating parties are not liable for any damages resulting from omissions or inaccuracies in the information provided, nor are they liable for damages resulting from problems caused by or inherent to distributing information on the internet, such as malfunctions, interruptions, errors or delays in information or services provide by the parties to you or by you to the parties via a website or via e-mail, or any other digital means. The collaborating parties will also not accept liability for any damages resulting from the use of data, advice or ideas provided by or on behalf of the parties by means of the Health and Care Information Models. The parties will not accept any liability for the content of information in this Health and Care Information Model to which or from which a hyperlink is referred. In the event of contradictions in

mentioned Health and Care Information Model documents and files, the most recent and highest version of the listed order in the revisions will indicate the priority of the documents in question. If information included in the digital version of a Health and Care Information Model is also distributed in writing, the written version will be leading in case of textual differences. This will apply if both have the same version number and date. A definitive version has priority over a draft version. A revised version has priority over previous versions.

1.19 Terms of Use

The user may use the Health and Care Information Models without limitations. The copyright provisions in the paragraph concerned apply to copying, distributing and passing on the Health and Care Information Models.

1.20 Copyrights

A Health and Care Information Model qualifies as a work within the meaning of Section 10 of the Copyright Act (Auteurswet). Copyrights protect the Health and Care Information Models and these rights are owned by the cooperating parties.

The user may copy, distribute and pass on the information in this Health and Care Information Model under the conditions that apply for Creative Commons license Attribution-NonCommercial-ShareAlike 3.0 Netherlands (CC BY-NC-SA-3.0).

The content is available under Creative Commons Attribution-NonCommercial-ShareAlike 3.0 (see also <http://creativecommons.org/licenses/by-nc-sa/3.0/nl/>)

This does not apply to information from third parties that sometimes is used and / or referred to in a Health and Care Information Model, for example to an international medical terminology system. Any (copyright) rights that protect this information are not owned by the cooperating parties but by those third parties.

Nictiz is the independent national competence centre for electronic exchange of health and care information. The activities of Nictiz include the targeted development and management of information standards at the request of and in partnership with the stakeholders in healthcare. Nictiz advises these parties on all aspects of information exchange and identifies (future) national and international developments.

Nictiz

P.O. Box 19121
2500 CC Den Haag
Oude Middenweg 55
2491 AC Den Haag

070-3173450
info@nictiz.nl
www.nictiz.nl

