

Health & Care Information Model:

nl.zorg.EncounterReport-v1.0.1

Status: Final

Release: 2024

Release status: Published

Managed by:



Content

1. nl.zorg.EncounterReport-v1.0.1	3
1.1 Revision History.....	3
1.2 Concept	3
1.3 Mindmap	3
1.4 Purpose.....	3
1.5 Patient Population	3
1.6 Evidence Base	3
1.7 Information Model	3
1.8 Example Instances.....	5
1.9 Instructions.....	5
1.10 Interpretation.....	5
1.11 Care Process	5
1.12 Example of the Instrument	5
1.13 Constraints.....	5
1.14 Issues	5
1.15 References	6
1.16 Functional Model	6
1.17 Traceability to other Standards.....	6
1.18 Disclaimer	6
1.19 Terms of Use	6
1.20 Copyrights	6

1. nl.zorg.EncounterReport-v1.0.1

DCM::CoderList	Projectgroep VIPP GGZ
DCM::ContactInformation.Address	*
DCM::ContactInformation.Name	*
DCM::ContactInformation.Telecom	*
DCM::ContentAuthorList	Projectgroep VIPP GGZ
DCM::CreationDate	30-3-2022
DCM::DeprecatedDate	
DCM::DescriptionLanguage	nl
DCM::EndorsingAuthority.Address	
DCM::EndorsingAuthority.Name	*
DCM::EndorsingAuthority.Telecom	
DCM::Id	2.16.840.1.113883.2.4.3.11.60.40.3.15.3
DCM::KeywordList	
DCM::LifecycleStatus	Final
DCM::ModelerList	Projectgroep VIPP GGZ
DCM::Name	nl.zorg.ContactVerslag
DCM::PublicationDate	23-04-2025
DCM::PublicationStatus	Published
DCM::ReviewerList	
DCM::RevisionDate	01-04-2025
DCM::Supersedes	nl.zorg.ContactVerslag-v1.0
DCM::Version	1.0.1
HCIM::PublicationLanguage	EN

1.1 Revision History

Publicatieversie 1.0 (10-06-2022)

Publicatieversie 1.0.1 (23-04-2025)

Bevat: ZIB-2592.

1.2 Concept

The contact report is a textual report of a (partial) consult of an Encounter (refer to HCIM Encounter for a definition of an encounter).

1.3 Mindmap

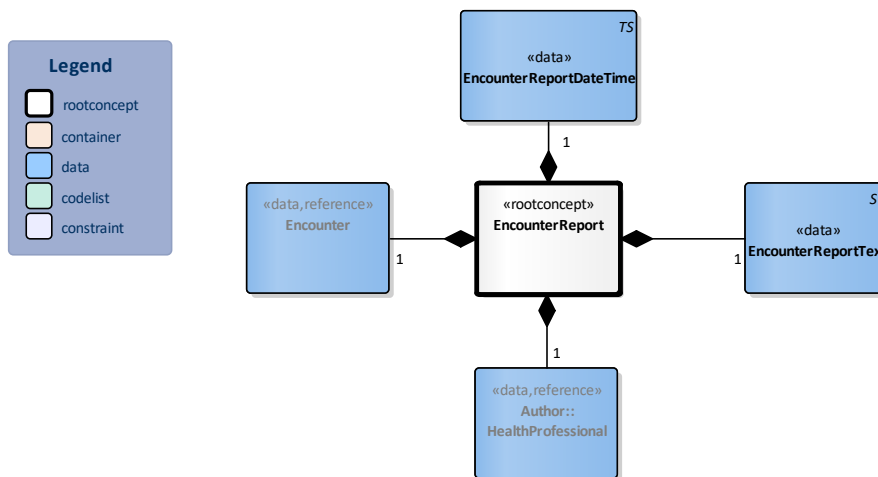
1.4 Purpose

A contact report offers a care provider the possibility to record information in a structured manner in free text about a contact with a patient.

1.5 Patient Population

1.6 Evidence Base

1.7 Information Model



«rootconcept»	EncounterReport	
Definitie	Root concept of the EncounterReport information model.This root concept contains all data elements of the EncounterReport information model.	
Datatype		
DCM::ConceptId	NL-CM:15.3.1	
DCM::DefinitionCode	SNOMED CT: 11591000146107 Patient encounter report	
Opties		

«data»	Author::HealthProfessional	
Definitie	The healthcare provider who prepared the report and who is responsible for its content.	
Datatype		
DCM::ConceptId	NL-CM:15.3.2	
DCM::ReferencedConceptId	NL-CM:17.1.1	This is a reference to the rootconcept of information model HealthProfessional.
Opties		

«data»	Encounter	
Definitie	The encounter the report is about.	
Datatype		
DCM::ConceptId	NL-CM:15.3.3	
DCM::DefinitionCode	SNOMED CT: 308335008 Patient encounter procedure	
DCM::ReferencedConceptId	NL-CM:15.1.1	This is a reference to the rootconcept of information model Encounter.
Opties		

«data»	EncounterReportDateTime	
Definitie	Date and, if applicable, the time the report was made.	
Datatype	TS	
DCM::ConceptId	NL-CM:15.3.4	
Opties		

«data»	EncounterReportText	
Definitie	The actual content of the contact as free text.	
Datatype	ST	
DCM::ConceptId	NL-CM:15.3.5	

DCM::DefinitionCode	SNOMED CT: 422813005	
	Document section	
Opties		

	Legend
Definitie	
Datatype	
Opties	

1.8 Example Instances

ContactVerslag	
ContactVerslagDatum Tijd	21-11-2020
Auteur	
Medewerkerscode	01299
AGBCode	01999999
Initialen	G.L.
Geslachtsnaam	Klaassen
ZorgverlenersRol	Psychiater
ContactVerslagTekst	Goed verzorgde man, normaal contact, wanhopige klachtenpresentatie, onrustige motoriek (grimasseren, oor vastgrijpen). Bewustzijn helder, oriëntatie intact, geheugen en zelfwaarneming ongestoord, bovengemiddeld intelligent, geen psychotische kenmerken, denken normaal van tempo en vorm, inhoudelijk preoccupatie met oorsuizen, stemming somber (er kan een lachje af), rationaliseren, isoleren van het affect, niet actief suïcidaal.

1.9 Instructions

1.10 Interpretation

1.11 Care Process

1.12 Example of the Instrument

1.13 Constraints

1.14 Issues

1.15 References

1.16 Functional Model

1.17 Traceability to other Standards

1.18 Disclaimer

The Health and Care Information Models (a.k.a Clinical Building Block) has been made in collaboration with several different parties in healthcare. These parties asked Nictiz to manage good maintenance and development of the information models. Hereafter, these parties and Nictiz are referred to as the collaborating parties. The collaborating parties paid utmost attention to the reliability and topicality of the data in these Health and Care Information Models. Omissions and inaccuracies may however occur. The collaborating parties are not liable for any damages resulting from omissions or inaccuracies in the information provided, nor are they liable for damages resulting from problems caused by or inherent to distributing information on the internet, such as malfunctions, interruptions, errors or delays in information or services provide by the parties to you or by you to the parties via a website or via e-mail, or any other digital means. The collaborating parties will also not accept liability for any damages resulting from the use of data, advice or ideas provided by or on behalf of the parties by means of the Health and Care Information Models. The parties will not accept any liability for the content of information in this Health and Care Information Model to which or from which a hyperlink is referred. In the event of contradictions in mentioned Health and Care Information Model documents and files, the most recent and highest version of the listed order in the revisions will indicate the priority of the documents in question. If information included in the digital version of a Health and Care Information Model is also distributed in writing, the written version will be leading in case of textual differences. This will apply if both have the same version number and date. A definitive version has priority over a draft version. A revised version has priority over previous versions.

1.19 Terms of Use

The user may use the Health and Care Information Models without limitations. The copyright provisions in the paragraph concerned apply to copying, distributing and passing on the Health and Care Information Models.

1.20 Copyrights

A Health and Care Information Model qualifies as a work within the meaning of Section 10 of the Copyright Act (Auteurswet). Copyrights protect the Health and Care Information Models and these rights are owned by the cooperating parties.

The user may copy, distribute and pass on the information in this Health and Care Information Model under the conditions that apply for Creative Commons license Attribution-NonCommercial-ShareAlike 3.0 Netherlands (CC BY-NC-SA-3.0).

The content is available under Creative Commons Attribution-NonCommercial-ShareAlike 3.0 (see also <http://creativecommons.org/licenses/by-nc-sa/3.0/nl/>)

This does not apply to information from third parties that sometimes is used and / or referred to in a Health and Care Information Model, for example to an international medical terminology system. Any (copyright) rights that protect this information are not owned by the cooperating parties but by those third parties.

Nictiz is the independent national competence centre for electronic exchange of health and care information. The activities of Nictiz include the targeted development and management of information standards at the request of and in partnership with the stakeholders in healthcare. Nictiz advises these parties on all aspects of information exchange and identifies (future) national and international developments.

Nictiz

P.O. Box 19121
2500 CC Den Haag
Oude Middenweg 55
2491 AC Den Haag

070-3173450
info@nictiz.nl
www.nictiz.nl

