

Health & Care Information Mod nl.zorg.MultidisciplinaryTeamMeetin 0

Status: Final

Release: 2020

Release status: Published

Content

1. nl.zorg.MultidisciplinaryTeamMeeting-v1.0	4
1.1 Revision History	4
1.2 Concept	4
1.3 Mindmap	4
1.4 Purpose	4
1.5 Patient Population	4
1.6 Evidence Base	4
1.7 Information Model	5
1.8 Example Instances	8
1.9 Instructions	9
1.10 Interpretation	9
1.11 Care Process	9
1.12 Example of the Instrument	9
1.13 Constraints	9
1.14 Issues	9
1.15 References	9
1.16 Functional Model	9
1.17 Traceability to other Standards	9
1.18 Disclaimer	9
1.19 Terms of Use	10
1.20 Copyrights	10

1. nl.zorg.MultidisciplinaryTeamMeeting-v1.0

DCM::CoderList	
DCM::ContactInformation.Address	*
DCM::ContactInformation.Name	*
DCM::ContactInformation.Telecom	*
DCM::ContentAuthorList	
DCM::CreationDate	10/04/2020
DCM::DeprecatedDate	
DCM::DescriptionLanguage	nl
DCM::EndorsingAuthority.Address	
DCM::EndorsingAuthority.Name	NFU
DCM::EndorsingAuthority.Telecom	
DCM::Id	2.16.840.1.113883.2.4.3.11.60.40.3.15.2
DCM::KeywordList	Patiëntbespreking, MDO
DCM::LifecycleStatus	Final
DCM::ModelerList	
DCM::Name	nl.zorg.Patientbespreking
DCM::PublicationDate	01-09-2020
DCM::PublicationStatus	Published
DCM::ReviewerList	
DCM::RevisionDate	10/04/2020
DCM::Supersedes	
DCM::Version	1.0
HCIM::PublicationLanguage	EN

1.1 Revision History

Publicatieversie 1.0 (01-09-2020)

1.2 Concept

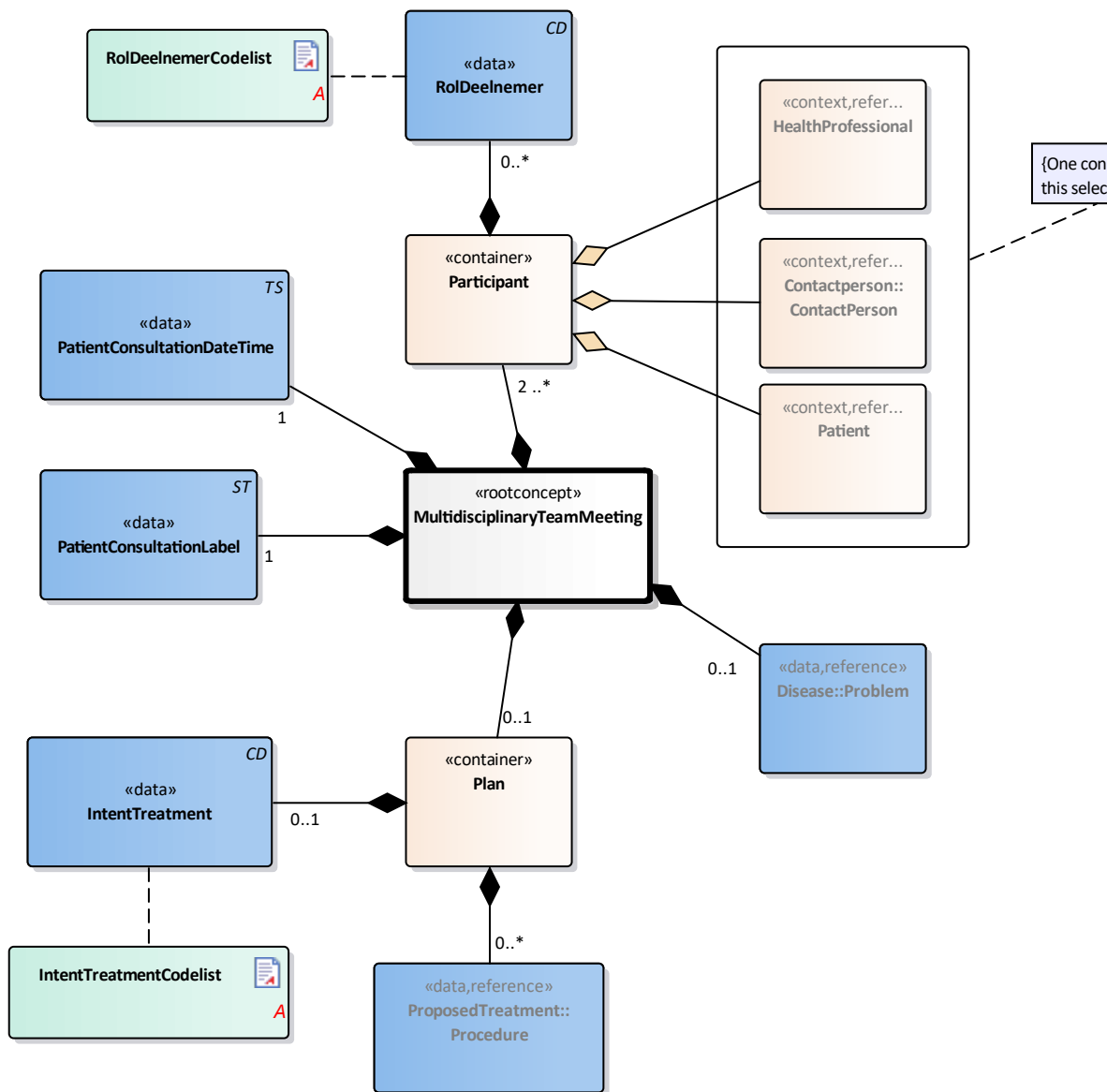
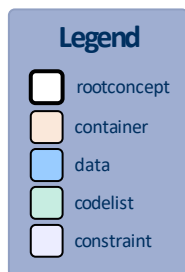
A multidisciplinary team meeting is a meeting of health care providers in which the results of e and treatment are discussed with the aim of formulating joint advice for the treatment of the p patient can also be present. When healthcare professionals from various disciplines participate structurally organized (local, regional, sub regional or through a partnership), this is often refer multi-disciplinary consultation .

1.3 Mindmap

1.4 Purpose

The aim of the multidisciplinary team meeting is to evaluate the health status of the patient an subsequent policy for optimal treatment with care providers of all disciplines relevant for the p

1.7 Information Model



«rootconcept»	MultidisciplinaryTeamMeeting	
Definitie	Root concept of the MultidisciplinaryTeamMeeting information model. root concept contains all data elements of the MultidisciplinaryTeamMeeting information model.	
Datatype		
DCM::ConceptId	NL-CM:15.2.1	
DCM::DefinitionCode	SNOMED CT: 384682003 Multidisciplinary care conference	
Opties		

«data»	PatientConsultationDateTime	
Definitie	The date (and time) the patient consultation is scheduled or took place	
Datatype	TS	
DCM::ConceptId	NL-CM:15.2.6	
DCM::DefinitionCode	SNOMED CT: 439771001	
	Date of event	
Opties		

«container»	Participant	
Definitie	Container of the Participant concept. This container contains all data elements of the Participant concept.	
Datatype		
DCM::ConceptId	NL-CM:15.2.13	
Opties		

«data»	RolDeelnemer	
Definitie	Role of the person in the patient meeting, for example chairman, exper notifier, secretary.	
Datatype	CD	
DCM::ConceptId	NL-CM:15.2.14	
DCM::ValueSet	RolDeelnemerCodelist	OID: 2.16.840.1.113883.2.4.3.11.60.40.2.15.2
Opties		

«context»	HealthProfessional	
Definitie	Health professional as participant of the patient consultation.	
Datatype		
DCM::ConceptId	NL-CM:15.2.3	
DCM::ExampleValue	Klinisch geneticus	
DCM::ReferencedConceptId	NL-CM:17.1.1	This is a reference to the rootconcept of information model HealthProfessional.
Opties		

«context»	Contactperson::ContactPerson	
Definitie	Contactperson as participant of the patient consultation.	
Datatype		
DCM::ConceptId	NL-CM:15.2.15	
DCM::ReferencedConceptId	NL-CM:3.1.1	This is a reference to the rootconcept of information model ContactPerson.
Opties		

«context»	Patient	
Definitie	The patient as participant of the patient consultation.	
Datatype		
DCM::ConceptId	NL-CM:15.2.16	

DCM::DefinitionCode	SNOMED CT: 423134005 Plan section	
Opties		

«data»	ProposedTreatment::Procedure	
Definitie	Proposed treatment.	
Datatype		
DCM::ConceptId	NL-CM:15.2.12	
DCM::ReferencedConceptId	NL-CM:14.1.1	This is a reference to the rootconcept of information model Procedure.
Opties		

«data»	Disease::Problem	
Definitie	The disease or patient problem that is the reason for the patient consultation.	
Datatype		
DCM::ConceptId	NL-CM:15.2.7	
DCM::DefinitionCode	SNOMED CT: 71388002 Procedure	
DCM::ExampleValue	Schisis	
DCM::ReferencedConceptId	NL-CM:5.1.1	This is a reference to the rootconcept of information model Problem.
Opties		

«data»	IntentTreatment	
Definitie	Intend of treatment. For instance conform protocol, curative or pain management, trial etc.	
Datatype	CD	
DCM::ConceptId	NL-CM:15.2.11	
DCM::DefinitionCode	SNOMED CT: 395077000 Treatment intent	
DCM::ExampleValue	true	
DCM::ValueSet	IntentTreatmentCodelist	OID: 2.16.840.1.113883.2.4.3.11.60.40.2.15.2
Opties		

«document»	IntentTreatmentCodelist	
Definitie		
Datatype		
DCM::ValueSetBinding	Extensible	
DCM::ValueSetId	2.16.840.1.113883.2.4.3.11.60.40.2.15.2.1	
Opties		

IntentieBehandelingCodelijst **OID: 2.16.840.1.113883.2.4.3.11.60.40.2.15.2**

Concept Name	Concept	Coding	Coding System OID	Description
--------------	---------	--------	-------------------	-------------

Other	OTH	NullFlavor	2.16.840.1.113883.5.1008	Anders, specificeer
-------	-----	------------	--------------------------	---------------------

«document»		RolDeelnemerCodelist		
Definitie				
Datatype				
DCM::ValueSetBinding		Extensible		
DCM::ValueSetId		2.16.840.1.113883.2.4.3.11.60.40.2.15.2.2		
Opties				

RolDeelnemerCodelijst				OID: 2.16.840.1.113883.2.4.3.11.60.40.2.15.2.2
Concept Name	Concept Code	Coding System Name	Coding System OID	Description
voorzitter	VOORZ	RolBespreking	2.16.840.1.113883.2.4.3.11.60.40.4.26.1	Voorzitter van de patiëntbespreking
aanmelder	AANM	RolBespreking	2.16.840.1.113883.2.4.3.11.60.40.4.26.1	Aanmelder van de patiënt bij de bespreking
expert	EXPR	RolBespreking	2.16.840.1.113883.2.4.3.11.60.40.4.26.1	Inhoudelijk expert bij bespreking
other	OTH	NullFlavor	2.16.840.1.113883.5.1008	Anders, namelijk

Legend	
Definitie	
Datatype	
Opties	

1.8 Example Instances

PatientBespreeking				
Label				
Expertpanel MDO colorectaal				
Deelnemers				
Naam	Specialisme	Zorgaanbieder	Contactgegevens	Deelnemer
W. Klaasen	Verpleegkundige	MUMC+	043-8547930	Casemanag
Drs. S. Curie	Radioloog	MUMC+	043-9263795	Expert
Dr. R. van Heck	Internist-oncoloog	MUMC+	043-5388393	Voorzitter
Dr. J. Willems	Chirurg-oncoloog	Laurentius zkh	0475-645398	Aanmelder
Dr. de Groot	Lever-chirurg	MMC	040-5921909	Expert
Dr. Stevens	Lever-chirurg	MUMC+	043-8748887	Expert
Patient en/of contactpersoon				
Dhr. Pieterse			0475 - 228844	
Mw. Pieterse-de Groot			06 - 11114444	
Patient Bespreking DatumTijd	Patient	Aandoening::Probleem		
		ProbleemNaam		
25-06-2020 10:15 - 10:30	Dhr. Pieterse	781382000 Malignant neoplasm of colon and/or rectum		
Beleid				
Intentie Behandeling				
Curatief				
VoorgesteldeBehandeling::Verrichting				
VerrichtingType	Datum	UitgevoerdDoor		
Partiële leverresectie	09-2020	Dr. Stevens		

1.9 Instructions

1.10 Interpretation

1.11 Care Process

1.12 Example of the Instrument

1.13 Constraints

1.14 Issues

1.15 References

volgt n

The Health and Care Information Models (a.k.a Clinical Building Block) has been made in collaboration with several different parties in healthcare. These parties asked Nictiz to manage good maintenance and development of the information models. Hereafter, these parties and Nictiz are referred to as the collaborating parties. The collaborating parties paid utmost attention to the reliability and topicality of the data in these Health and Care Information Models. Omissions and inaccuracies may however occur. The collaborating parties are not liable for any damages resulting from omissions or inaccuracies in the information provided, nor are they liable for damages resulting from problems caused by or in the distributing information on the internet, such as malfunctions, interruptions, errors or delays in the information or services provide by the parties to you or by you to the parties via a website or via e-mail, or via other digital means. The collaborating parties will also not accept liability for any damages resulting from the use of data, advice or ideas provided by or on behalf of the parties by means of the Health and Care Information Models. The parties will not accept any liability for the content of information in this Health and Care Information Model to which or from which a hyperlink is referred. In the event of contradiction between the mentioned Health and Care Information Model documents and files, the most recent and highest version in the listed order in the revisions will indicate the priority of the documents in question. If information is included in the digital version of a Health and Care Information Model is also distributed in written form, the written version will be leading in case of textual differences. This will apply if both have the same version number and date. A definitive version has priority over a draft version. A revised version has priority over previous versions.

1.19 Terms of Use

The user may use the Health and Care Information Models without limitations. The copyright provisions in the paragraph concerned apply to copying, distributing and passing on the Health and Care Information Models.

1.20 Copyrights

A Health and Care Information Model qualifies as a work within the meaning of Section 10 of the Copyright Act (Auteurswet). Copyrights protect the Health and Care Information Models and these rights belong to the cooperating parties.

The user may copy, distribute and pass on the information in this Health and Care Information Model under the conditions that apply for Creative Commons license Attribution-NonCommercial-ShareAlike 3.0 (CC BY-NC-SA) in the Netherlands (CC BY-NC-SA-3.0).

The content is available under Creative Commons Attribution-NonCommercial-ShareAlike 3.0 (CC BY-NC-SA) (<http://creativecommons.org/licenses/by-nc-sa/3.0/nl/>)

This does not apply to information from third parties that sometimes is used and / or referred to in the Health and Care Information Model, for example to an international medical terminology system. Any rights that protect this information are not owned by the cooperating parties but by those third parties.

Nictiz is the independent national competence centre for electronic exchange of health and care information. The activities of Nictiz include the targeted development and management of information standards at the national level and in partnership with the stakeholders in healthcare. Nictiz advises these parties on all aspects of information exchange and identifies (future) national and international developments.

Nictiz

P.O. Box 19121
2500 CC Den Haag
Oude Middenweg 55
2491 AC Den Haag

070-3173450
info@nictiz.nl
www.nictiz.nl

