

# Health & Care Information Model: nl.zorg.FunctionalOrMentalStatus-v3.0

Status:Final

Release:2016

Release status: Published

Managed by:

Better health  
through better IT



# Content

<b>1. nl.zorg.FunctionalOrMentalStatus-v3.0</b>	<b>3</b>
1.1 Revision History	3
1.2 Concept	3
1.3 Mindmap	3
1.4 Purpose	3
1.5 Patient Population	4
1.6 Evidence Base	4
1.7 Information Model	4
1.8 Example Instances	8
1.9 Instructions	8
1.10 Interpretation	8
1.11 Care Process	8
1.12 Example of the Instrument	9
1.13 Constraints	9
1.14 Issues	9
1.15 References	9
1.16 Functional Model	9
1.17 Traceability to other Standards	9
1.18 Disclaimer	9
1.19 Terms of Use	9
1.20 Copyrights	9

# 1. nl.zorg.FunctionalOrMentalStatus-v3.0

DCM::CoderList	Kerngroep Registratie aan de Bron
DCM::ContactInformation.Address	*
DCM::ContactInformation.Name	*
DCM::ContactInformation.Telecom	*
DCM::ContentAuthorList	Projectgroep Generieke Overdrachtsgegevens & Kerngroep Registratie aan de Bron
DCM::CreationDate	12-9-2014
DCM::DeprecatedDate	
DCM::DescriptionLanguage	nl
DCM::EndorsingAuthority.Address	
DCM::EndorsingAuthority.Name	PM
DCM::EndorsingAuthority.Telecom	
DCM::Id	2.16.840.1.113883.2.4.3.11.60.40.3.4.26
DCM::KeywordList	mentale status, functionele status, functionele beperking, mentale stoornis, ADL
DCM::LifecycleStatus	Final
DCM::ModelerList	Kerngroep Registratie aan de Bron
DCM::Name	nl.zorg.FunctioneleOfMentaleStatus
DCM::PublicationDate	1-5-2016
DCM::PublicationStatus	Published
DCM::ReviewerList	Projectgroep Generieke Overdrachtsgegevens & Kerngroep Registratie aan de Bron
DCM::RevisionDate	22-5-2015
DCM::Superseeds	nl.nfu.FunctioneleOfMentaleStatus-v1.0.1
DCM::Version	3.0
HCIM::PublicationLanguage	EN

## 1.1 Revision History

Publicatieversie 1.0 (01-04-2015)

Bevat: ZIB-89, ZIB-308.

Incl. algemene wijzigingsverzoeken:

ZIB-94, ZIB-154, ZIB-200, ZIB-201, ZIB-309, ZIB-324, ZIB-326.

Publicatieversie 1.0.1 (22-05-2015)

Bevat: ZIB-384, ZIB-383, ZIB-382.

Publicatieversie 3.0 (01-05-2016)

Bevat: ZIB-453

## 1.2 Concept

The functional or mental status provides insight into the patient's functional and mental limitations.

## 1.3 Mindmap

## 1.4 Purpose

The patient's functional and mental status can be recorded to provide insight into the patient's limitations

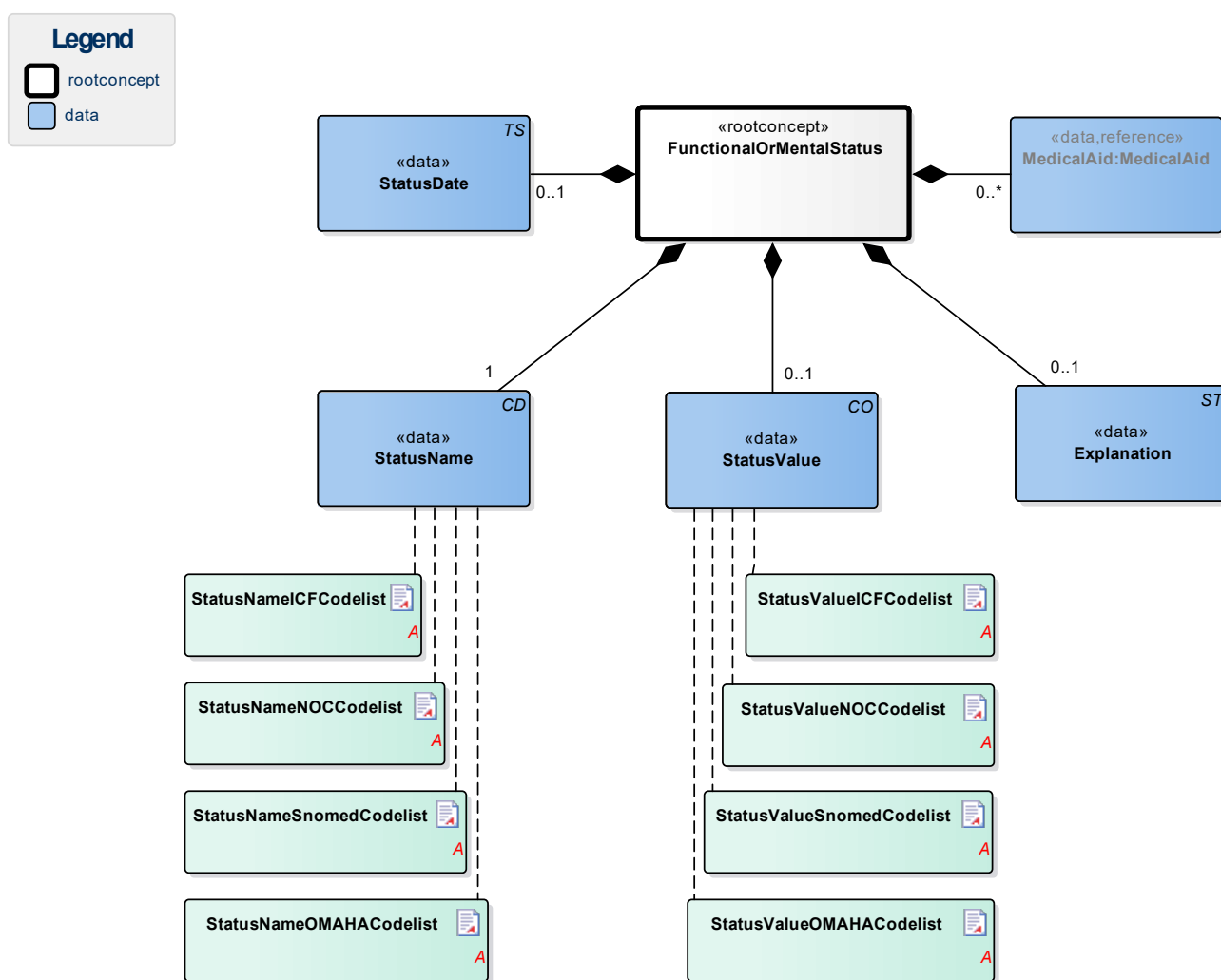
which need to be taken into account for further treatment and care and in order to evaluate the effects of a treatment.

Diagnoses with (the potential for) functional limitations are not to be recorded here. To record these, please use the ConcernTransfer information model.

## 1.5 Patient Population

## 1.6 Evidence Base

## 1.7 Information Model



«rootconcept»	FunctionalOrMentalStatus	
Definitie	Root concept of FunctionalOrMentalStatus. This concept contains all data elements of the FunctionalOrMentalStatus information model.	
Datatype		
DCM::ConceptId	NL-CM:4.26.1	
Opties		

«data»	StatusName	
<b>Definitie</b>	Coded description of the functional or mental status or limitation. Code systems used include: <ul style="list-style-type: none"> <li>• SNOMED CT</li> <li>• ICF (International Classification of Functioning, Disability and Health)</li> <li>• NOC (Nursing Outcomes Classification)</li> <li>• OMAHA</li> </ul>	
<b>Datatype</b>	CD	
<b>DCM::ConceptId</b>	NL-CM:4.26.2	
<b>DCM::ExampleValue</b>	Scheren (SNOMED-CT: 284887008 ability to shave)	
<b>DCM::ValueSet</b>	StatusNameSnomedCodelist	OID: 2.16.840.1.113883.2.4.3.11.60.40.2.4.26.4
<b>DCM::ValueSet</b>	StatusNameICFCodelist	OID: 2.16.840.1.113883.2.4.3.11.60.40.2.4.26.3
<b>DCM::ValueSet</b>	StatusNameNOCCodelist	OID: 2.16.840.1.113883.2.4.3.11.60.40.2.4.26.2
<b>DCM::ValueSet</b>	StatusNameOMAHACodelist	OID: 2.16.840.1.113883.2.4.3.11.60.40.2.4.26.1
<b>Opties</b>		

«data»	StatusValue	
<b>Definitie</b>	The extent to which the patient is limited by the functional or mental condition. If both the status name and the status value are recorded in code, then both values must come from the same code system. If the patient uses a medical aid, the evaluation of the extent of the limitation will take place without this aid.	
<b>Datatype</b>	CO	
<b>DCM::ConceptId</b>	NL-CM:4.26.3	
<b>DCM::ExampleValue</b>	Moeite met scheren (SNOMED-CT: 284892005 difficulty shaving)	
<b>DCM::ValueSet</b>	StatusValueOMAHACodelist	OID: 2.16.840.1.113883.2.4.3.11.60.40.2.4.26.5
<b>DCM::ValueSet</b>	StatusValueSnomedCodelist	OID: 2.16.840.1.113883.2.4.3.11.60.40.2.4.26.8
<b>DCM::ValueSet</b>	StatusValueNOCCodelist	OID: 2.16.840.1.113883.2.4.3.11.60.40.2.4.26.7
<b>DCM::ValueSet</b>	StatusValueICFCodelist	OID: 2.16.840.1.113883.2.4.3.11.60.40.2.4.26.6
<b>Opties</b>		

«data»	StatusDate	
<b>Definitie</b>	Date on which the status was determined. A 'vague' date, such as only the year, is permitted.	
<b>Datatype</b>	TS	
<b>DCM::ConceptId</b>	NL-CM:4.26.6	
<b>Opties</b>		

«data»	Explanation
--------	-------------

<b>Definitie</b>	Explanatory comments as a description of the functional or mental status.	
<b>Datatype</b>	ST	
<b>DCM::ConceptId</b>	NL-CM:4.26.4	
<b>DCM::DefinitionCode</b>	LOINC: 48767-8 Annotation comment	
<b>Opties</b>		

<b>«data»</b>	<b>MedicalAid:MedicalAid</b>	
<b>Definitie</b>	Medical aid the patient has to reduce the impact of the disability or disorder.	
<b>Datatype</b>		
<b>DCM::ConceptId</b>	NL-CM:4.26.5	
<b>DCM::ReferencedConceptId</b>	NL-CM:10.1.1	This is a reference to concept MedischHulpmiddel in information model MedischHulpmiddel.
<b>Opties</b>		

<b>«document»</b>	<b>StatusNameICFCodelist</b>	
<b>Definitie</b>		
<b>Datatype</b>		
<b>DCM::ValueSetId</b>	2.16.840.1.113883.2.4.3.11.60.40.2.4.26.3	
<b>Opties</b>		

<b>StatusNaamICFCodelijst</b>	<b>OID:</b> <b>2.16.840.1.113883.2.4.3.11.60.40.2.4.26.3</b>
-------------------------------	---

Codes	Coding Syst. Name	Coding System OID
Alle waarden	ICF	2.16.840.1.113883.6.254

<b>«document»</b>	<b>StatusNameNOCCodelist</b>	
<b>Definitie</b>		
<b>Datatype</b>		
<b>DCM::ValueSetId</b>	2.16.840.1.113883.2.4.3.11.60.40.2.4.26.2	
<b>Opties</b>		

<b>StatusNaamNOCCodelijst</b>	<b>OID:</b> <b>2.16.840.1.113883.2.4.3.11.60.40.2.4.26.2</b>
-------------------------------	---

Codes	Coding Syst. Name	Coding System OID
Alle waarden	NOC	2.16.840.1.113883.6.16

<b>«document»</b>	<b>StatusNameOMAHACodelist</b>	
<b>Definitie</b>		
<b>Datatype</b>		
<b>DCM::ValueSetId</b>	2.16.840.1.113883.2.4.3.11.60.40.2.4.26.1	

<b>Opties</b>		
<b>StatusNaamOMAHACod elijst</b>		<b>OID: 2.16.840.1.113883.2.4.3.11.60.40.2.4. 26.1</b>
Codes	Coding Syst. Name	Coding System OID
Alle waarden	OMAHA	2.16.840.1.113883.6.98

<b>«document»</b>		
<b>StatusNameSnomedCodelist</b>		
<b>Definitie</b>		
<b>Datatype</b>		
<b>DCM::ValueSetId</b>	2.16.840.1.113883.2.4.3.11. 60.40.2.4.26.4	
<b>Opties</b>		
<b>StatusNaamSnomedCod elijst</b>		<b>OID: 2.16.840.1.113883.2.4.3.11.60.40.2.4. 26.4</b>
Codes	Coding Syst. Name	Coding System OID
Alle waarden	SNOMED CT	2.16.840.1.113883.6.96

<b>«document»</b>		
<b>StatusValueICFCodelist</b>		
<b>Definitie</b>		
<b>Datatype</b>		
<b>DCM::ValueSetId</b>	2.16.840.1.113883.2.4.3.11. 60.40.2.4.26.6	
<b>Opties</b>		
<b>StatusWaardeICFCodelij st</b>		<b>OID: 2.16.840.1.113883.2.4.3.11.60.40.2.4. 26.6</b>
Codes	Coding Syst. Name	Coding System OID
Alle waarden	ICF	2.16.840.1.113883.6.254

<b>«document»</b>		
<b>StatusValueNOCCodelist</b>		
<b>Definitie</b>		
<b>Datatype</b>		
<b>DCM::ValueSetId</b>	2.16.840.1.113883.2.4.3.11. 60.40.2.4.26.7	
<b>Opties</b>		
<b>StatusWaardeNOCCodelijst</b>		<b>OID: 2.16.840.1.113883.2.4.3.11.60.40.2.4.26 .7</b>
Codes	Coding Syst. Name	Coding System OID
Alle waarden	NOC	2.16.840.1.113883.6.16

«document»		StatusValueOMAHACodelist
Definitie		
Datatype		
DCM::ValueSetId	2.16.840.1.113883.2.4.3.11.60.40.2.4.26.5	
Opties		
StatusWaardeOMAHACodelijst		OID: 2.16.840.1.113883.2.4.3.11.60.40.2.4.26.5
Codes	Coding Syst. Name	Coding System OID
Alle waarden	OMAHA	2.16.840.1.113883.6.98

«document»		StatusValueSnomedCodelist
Definitie		
Datatype		
DCM::ValueSetId	2.16.840.1.113883.2.4.3.11.60.40.2.4.26.8	
Opties		
StatusWaardeSnomedCodelijst		OID: 2.16.840.1.113883.2.4.3.11.60.40.2.4.26.8
Codes	Coding Syst. Name	Coding System OID
Alle waarden	SNOMED CT	2.16.840.1.113883.6.96

## 1.8 Example Instances

FunctioneleOfMentaleStatus	
StatusNaam	Zich scheren
StatusWaarde	Moeite met scheren
StatusDatum	23-02-2015
Toelichting	--
MedischHulpmiddel	--

## 1.9 Instructions

## 1.10 Interpretation

## 1.11 Care Process



## **1.12 Example of the Instrument**

## **1.13 Constraints**

## **1.14 Issues**

## **1.15 References**

## **1.16 Functional Model**

## **1.17 Traceability to other Standards**

## **1.18 Disclaimer**

This Health and Care Information Model (a.k.a Clinical Building Block) has been made in collaboration with several different parties in healthcare. These parties asked Nictiz to manage good maintenance and development of the information models. Hereafter, these parties and Nictiz are referred to as the collaborating parties. The collaborating parties paid utmost attention to the reliability and topicality of the data in these Health and Care Information Models. Omissions and inaccuracies may however occur. The collaborating parties are not liable for any damages resulting from omissions or inaccuracies in the information provided, nor are they liable for damages resulting from problems caused by or inherent to distributing information on the internet, such as malfunctions, interruptions, errors or delays in information or services provide by the parties to you or by you to the parties via a website or via e-mail, or any other digital means. The collaborating parties will also not accept liability for any damages resulting from the use of data, advice or ideas provided by or on behalf of the parties by means of this Health and Care Information Model. The parties will not accept any liability for the content of information in this Health and Care Information Model to which or from which a hyperlink is referred. In the event of contradictions in mentioned Health and Care Information Model documents and files, the most recent and highest version of the listed order in the revisions will indicate the priority of the documents in question. If information included in the digital version of this Health and Care Information Model is also distributed in writing, the written version will be leading in case of textual differences. This will apply if both have the same version number and date. A definitive version has priority over a draft version. A revised version has priority over previous versions.

## **1.19 Terms of Use**

The user may use the information in this Health and Care Information Model without limitations. The copyright provisions in the paragraph concerned apply to copying, distributing and passing on information from this Health and Care Information Model.

## **1.20 Copyrights**

The user may copy, distribute and pass on the information in this Health and Care Information Model under the conditions that apply for Creative Commons license Attribution-NonCommercial-ShareAlike 3.0 Netherlands (CC BY-NC-SA-3.0). The content is available under Creative Commons

