

# Health & Care Information Mod

## nl.zorg.CareAgreement-v1.0

Status: Final

Release: 2020

Release status: Published

Managed by:



# Content

|                                      |          |
|--------------------------------------|----------|
| <b>1. nl.zorg.CareAgreement-v1.0</b> | <b>3</b> |
| 1.1 Revision History                 | 3        |
| 1.2 Concept                          | 3        |
| 1.3 Mindmap                          | 3        |
| 1.4 Purpose                          | 3        |
| 1.5 Patient Population               | 3        |
| 1.6 Evidence Base                    | 3        |
| 1.7 Information Model                | 3        |
| 1.8 Example Instances                | 7        |
| 1.9 Instructions                     | 7        |
| 1.10 Interpretation                  | 8        |
| 1.11 Care Process                    | 8        |
| 1.12 Example of the Instrument       | 8        |
| 1.13 Constraints                     | 8        |
| 1.14 Issues                          | 8        |
| 1.15 References                      | 8        |
| 1.16 Functional Model                | 8        |
| 1.17 Traceability to other Standards | 8        |
| 1.18 Disclaimer                      | 8        |
| 1.19 Terms of Use                    | 8        |
| 1.20 Copyrights                      | 9        |

# 1. nl.zorg.CareAgreement-v1.0

|                                 |   |
|---------------------------------|---|
| DCM::CoderList                  | Projectgroep NHG                        |
| DCM::ContactInformation.Address | *                                       |
| DCM::ContactInformation.Name    | *                                       |
| DCM::ContactInformation.Telecom | *                                       |
| DCM::ContentAuthorList          | *                                       |
| DCM::CreationDate               | 20/03/2020                              |
| DCM::DeprecatedDate             |   |
| DCM::DescriptionLanguage        | nl                                      |
| DCM::EndorsingAuthority.Address |   |
| DCM::EndorsingAuthority.Name    | *                                       |
| DCM::EndorsingAuthority.Telecom |   |
| DCM::Id                         | 2.16.840.1.113883.2.4.3.11.60.40.3.16.2 |
| DCM::KeywordList                |   |
| DCM::LifecycleStatus            | Final                                   |
| DCM::ModelerList                | *                                       |
| DCM::Name                       | nl.zorg.ZorgAfspraak                    |
| DCM::PublicationDate            | 01-09-2020                              |
| DCM::PublicationStatus          | Published                               |
| DCM::ReviewerList               |   |
| DCM::RevisionDate               |   |
| DCM::Supersedes                 | *                                       |
| DCM::Version                    | 1.0                                     |
| HCIM::PublicationLanguage       | EN                                      |

## 1.1 Revision History

Publicatieversie 1.0 (01-09-2020)

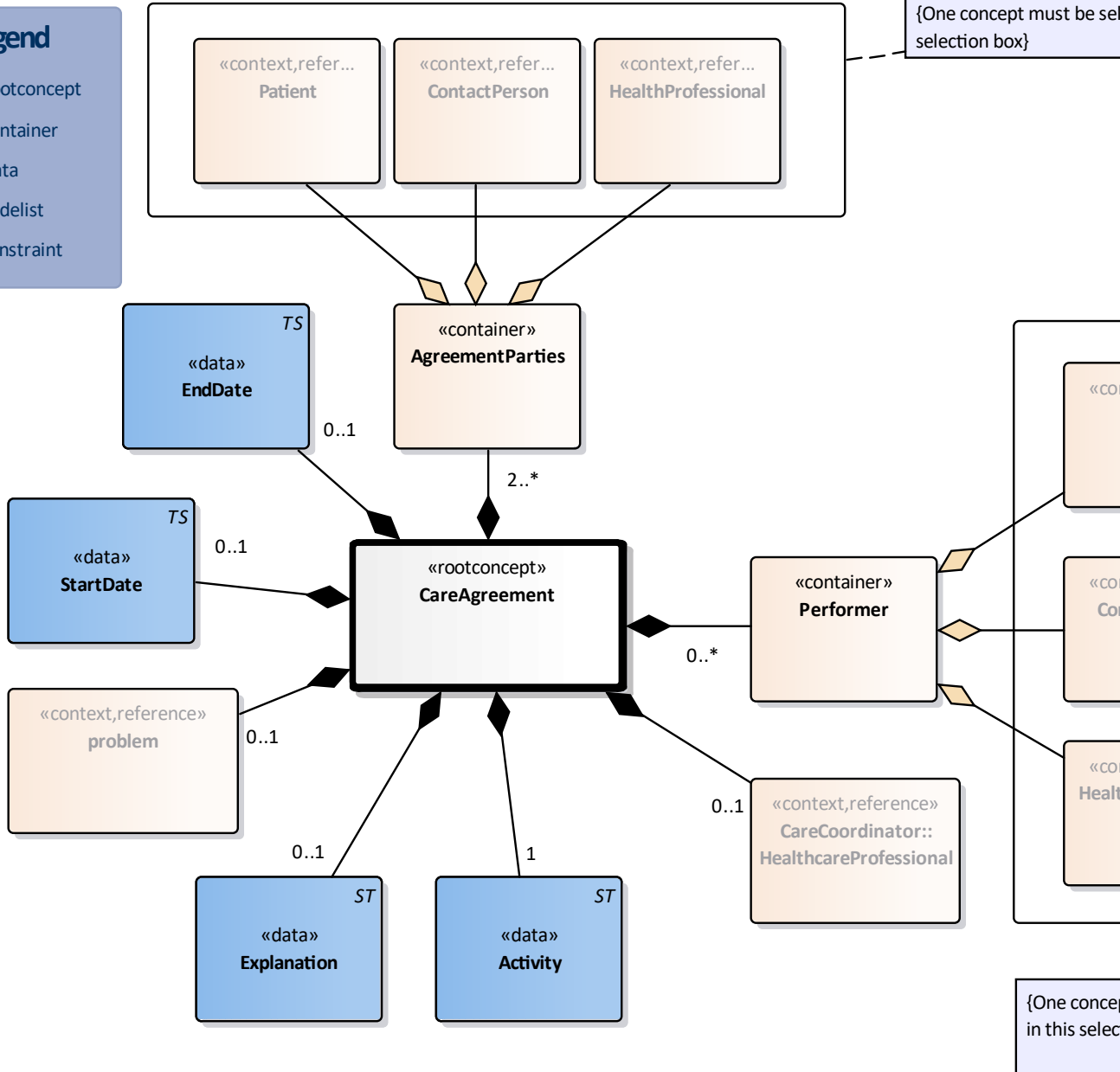
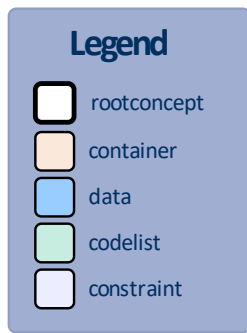
## 1.2 Concept

Documentation of agreements between patient, possibly the patient's contact person(s), and health care professional(s) with respect to care, treatment, or activities that should be performed or explicitly not performed. The Care Agreement focuses on a specific activity in the context of treatment and care.

## 1.3 Mindmap

## 1.4 Purpose

The patient, possibly the patient's contact persons, and health care professional(s) make care agreements about specific activities to achieve healthcare goals, plan making or execution of those plans. The agreement concerns clarifying who does what and when, possibly also how, where and why this is carried out.



|                            |  |                       |
|----------------------------|--|-----------------------|
| <b>«rootconcept»</b>       | <b>CareAgreement</b>   |                       |
| <b>Definitie</b>           | Root concept of the CareAgreement information model.This root concept contains all data elements of the CareAgreement information model. |                       |
| <b>Datatype</b>            |  |                       |
| <b>DCM::ConceptId</b>      | NL-CM:16.2.1   |                       |
| <b>DCM::DefinitionCode</b> | SNOMED CT: 288834001   | Agreeing on care plan |
| <b>Opties</b>              |  |                       |

|                       |  |  |
|-----------------------|--|--|
| <b>«data»</b>         | <b>StartDate</b>                         |  |
| <b>Definitie</b>      | The date when the care agreement starts. |  |
| <b>Datatype</b>       | TS                                       |  |
| <b>DCM::ConceptId</b> | NL-CM:16.2.16                            |  |
| <b>Opties</b>         |  |  |

|                       |   |  |
|-----------------------|---|--|
|                       | elements of the AgreementParties concept. |  |
| <b>Datatype</b>       |   |  |
| <b>DCM::ConceptId</b> | NL-CM:16.2.3                              |  |
| <b>Opties</b>         |   |  |

|                                 |  |  |
|---------------------------------|--|--|
| <b>«context»</b>                | <b>Patient</b>   |  |
| <b>Definitie</b>                | The patient himself/herself as participant in making the care agreement. |  |
| <b>Datatype</b>                 |  |  |
| <b>DCM::ConceptId</b>           | NL-CM:16.2.4   |  |
| <b>DCM::DefinitionCode</b>      | SNOMED CT: 116154003<br>Patient  |  |
| <b>DCM::ReferencedConceptId</b> | NL-CM:0.1.1  | This is a reference to the rootconcept of information model Patient. |
| <b>Opties</b>                   |  |  |

|                                 |   |  |
|---------------------------------|---|--|
| <b>«context»</b>                | <b>ContactPerson</b>  |  |
| <b>Definitie</b>                | The contact person of the patient who took part in making the care agreement. |  |
| <b>Datatype</b>                 |   |  |
| <b>DCM::ConceptId</b>           | NL-CM:16.2.5  |  |
| <b>DCM::DefinitionCode</b>      | SNOMED CT: 70862002<br>Contact person   |  |
| <b>DCM::ReferencedConceptId</b> | NL-CM:3.1.1   | This is a reference to the rootconcept of information model ContactPerson. |
| <b>Opties</b>                   |   |  |

|                                 |   |   |
|---------------------------------|---|---|
| <b>«context»</b>                | <b>HealthProfessional</b>   |   |
| <b>Definitie</b>                | The health professional who took part in making the care agreement. |   |
| <b>Datatype</b>                 |   |   |
| <b>DCM::ConceptId</b>           | NL-CM:16.2.2  |   |
| <b>DCM::DefinitionCode</b>      | SNOMED CT: 223366009<br>Healthcare professional                     |   |
| <b>DCM::ReferencedConceptId</b> | NL-CM:17.1.1  | This is a reference to the rootconcept of information model HealthProfessional. |
| <b>Opties</b>                   |   |   |

|                            |  |  |
|----------------------------|--|--|
| <b>«container»</b>         | <b>Performer</b>   |  |
| <b>Definitie</b>           | Container of the Performer concept.This container contains all data elements of the Performer concept. |  |
| <b>Datatype</b>            |  |  |
| <b>DCM::ConceptId</b>      | NL-CM:16.2.6   |  |
| <b>DCM::DefinitionCode</b> | SNOMED CT: 420158005<br>Performer of method  |  |
| <b>Opties</b>              |  |  |

|                  |                |  |
|------------------|----------------|--|
| <b>«context»</b> | <b>Patient</b> |  |
|------------------|----------------|--|

| «context»                | ContactPerson   |  |
|--------------------------|---|--|
| Definitie                | A contact person of the patient as performer of the agreed action or activity |  |
| Datatype                 |   |  |
| DCM::ConceptId           | NL-CM:16.2.8  |  |
| DCM::DefinitionCode      | SNOMED CT: 70862002<br>Contact person   |  |
| DCM::ReferencedConceptId | NL-CM:3.1.1   | This is a reference to the rootconcept of information model ContactPerson. |
| Opties                   |   |  |

| «context»                | HealthProfessional   |   |
|--------------------------|--|---|
| Definitie                | A health professional as performer of the agreed action or activity. |   |
| Datatype                 |  |   |
| DCM::ConceptId           | NL-CM:16.2.9   |   |
| DCM::DefinitionCode      | SNOMED CT: 223366009<br>Healthcare professional                      |   |
| DCM::ReferencedConceptId | NL-CM:17.1.1   | This is a reference to the rootconcept of information model HealthProfessional. |
| Opties                   |  |   |

| «context»                | CareCoordinator::HealthcareProfessional   |   |
|--------------------------|---|---|
| Definitie                | The health care professional who will coordinate the agreed action or activity. |   |
| Datatype                 |   |   |
| DCM::ConceptId           | NL-CM:16.2.10   |   |
| DCM::DefinitionCode      | SNOMED CT: 768820003<br>Care coordinator  |   |
| DCM::ReferencedConceptId | NL-CM:17.1.1  | This is a reference to the rootconcept of information model HealthProfessional. |
| Opties                   |   |   |

| «data»              | Activity  |  |
|---------------------|---|--|
| Definitie           | The action or activity that has been agreed to perform. |  |
| Datatype            | ST  |  |
| DCM::ConceptId      | NL-CM:16.2.11   |  |
| DCM::DefinitionCode | SNOMED CT: 257733005<br>Activity                        |  |
| DCM::ExampleValue   | elke week zelf bloeddruk<br>thuis meten                 |  |
| Opties              |   |  |

| «data»         | Explanation   |  |
|----------------|---|--|
| Definitie      | Explanation about the action to be performed and to be evaluated. |  |
| Datatype       | ST  |  |
| DCM::ConceptId | NL-CM:16.2.12   |  |

| «context»                | problem  |  |
|--------------------------|--|--|
| Definitie                | The patient's disease or problem as reason for the care agreement. |  |
| Datatype                 |  |  |
| DCM::ConceptId           | NL-CM:16.2.13  |  |
| DCM::DefinitionCode      | SNOMED CT: 363702006 Has focus                                     |  |
| DCM::ReferencedConceptId | NL-CM:5.1.1  | This is a reference to the rootconcept of information model Problem. |
| Opties                   |  |  |

|           | Legend |
|-----------|--------|
| Definitie |        |
| Datatype  |        |
| Opties    |        |

## 1.8 Example Instances

| ZorgAfspraak            |   |                        |
|-------------------------|---|------------------------|
| Activiteit              | Minimaal 3 keer per week dagboek in de E-Health app invullen.               |                        |
| BeginDatum              | 15/09/2020  |                        |
| EindDatum               | --  |                        |
| Toelichting             | POH-GGZ van de huisartspraktijk leest en reageert wekelijks (indien nodig). |                        |
| Probleem                |   |                        |
| ProbleemNaam            |   |                        |
| Depressieve stoornissen |   |                        |
| AfspraakPartijen        |   |                        |
| ZorgverlenerNaam        | Specialisme   | Zorgaanbieder          |
| Drs. J. van Dam         | klinische psychologie   | Parnassia Centrum West |
| Patient                 | Geboortedatum   |                        |
| A.S. van Dongen         | 09/07/2001  |                        |
| Contactpersoon          | Relatie   |                        |
| M. van Dongen           | Moeder  |                        |
| Uitvoerder              |   |                        |
| Patient                 |   |                        |
| A.S. van Dongen         |   |                        |

## **1.10 Interpretation**

## **1.11 Care Process**

## **1.12 Example of the Instrument**

## **1.13 Constraints**

## **1.14 Issues**

## **1.15 References**

## **1.16 Functional Model**

## **1.17 Traceability to other Standards**

## **1.18 Disclaimer**

The Health and Care Information Models (a.k.a Clinical Building Block) has been made in collaboration with several different parties in healthcare. These parties asked Nictiz to manage good maintenance and development of the information models. Hereafter, these parties and Nictiz are referred to as the collaborating parties. The collaborating parties paid utmost attention to the reliability and topicality of the data in these Health and Care Information Models. Omissions and inaccuracies may however occur. The collaborating parties are not liable for any damages resulting from omissions or inaccuracies in the information provided, nor are they liable for damages resulting from problems caused by or in connection with distributing information on the internet, such as malfunctions, interruptions, errors or delays in the information or services provide by the parties to you or by you to the parties via a website or via e-mail, or via other digital means. The collaborating parties will also not accept liability for any damages resulting from the use of data, advice or ideas provided by or on behalf of the parties by means of the Health and Care Information Models. The parties will not accept any liability for the content of information in this Health and Care Information Model to which or from which a hyperlink is referred. In the event of contradiction between the mentioned Health and Care Information Model documents and files, the most recent and highest version shall prevail.



the paragraph concerned apply to copying, distributing and passing on the Health and Care Information Models.

## 1.20 Copyrights

A Health and Care Information Model qualifies as a work within the meaning of Section 10 of the Copyright Act (Auteurswet). Copyrights protect the Health and Care Information Models and these rights belong to the cooperating parties.

The user may copy, distribute and pass on the information in this Health and Care Information Model under the conditions that apply for Creative Commons license Attribution-NonCommercial-ShareAlike 3.0 Netherlands (CC BY-NC-SA-3.0).

The content is available under Creative Commons Attribution-NonCommercial-ShareAlike 3.0 (Netherlands) (<http://creativecommons.org/licenses/by-nc-sa/3.0/nl/>)

This does not apply to information from third parties that sometimes is used and / or referred to in the Health and Care Information Model, for example to an international medical terminology system. Any rights that protect this information are not owned by the cooperating parties but by those third parties.

Nictiz is the independent national competence centre for electronic exchange of health and care information. The activities of Nictiz include the targeted development and management of information standards at the national level and in partnership with the stakeholders in healthcare. Nictiz advises these parties on all aspects of information exchange and identifies (future) national and international developments.

**Nictiz**

P.O. Box 19121  
2500 CC Den Haag  
Oude Middenweg 55  
2491 AC Den Haag

070-3173450  
[info@nictiz.nl](mailto:info@nictiz.nl)  
[www.nictiz.nl](http://www.nictiz.nl)

