

Health & Care Information Model: nl.zorg.DrugUse-v3.1

Status:Final

Release:2017

Release status: Prepublished

Managed by:

Better health
through better IT

Nictiz 

Content

1. nl.zorg.DrugUse-v3.1	3
1.1 Revision History	3
1.2 Concept	4
1.3 Mindmap	4
1.4 Purpose	4
1.5 Patient Population	4
1.6 Evidence Base	4
1.7 Information Model	4
1.8 Example Instances	8
1.9 Instructions	8
1.10 Interpretation	8
1.11 Care Process	8
1.12 Example of the Instrument	8
1.13 Constraints	8
1.14 Issues	8
1.15 References	8
1.16 Functional Model	8
1.17 Traceability to other Standards	8
1.18 Disclaimer	8
1.19 Terms of Use	9
1.20 Copyrights	9

1. nl.zorg.DrugUse-v3.1

DCM::CoderList	Kerngroep Registratie aan de Bron
DCM::ContactInformation.Address	*
DCM::ContactInformation.Name	*
DCM::ContactInformation.Telecom	*
DCM::ContentAuthorList	Projectgroep Generieke Overdrachtsgegevens & Kerngroep Registratie aan de Bron
DCM::CreationDate	5-7-2012
DCM::DeprecatedDate	
DCM::DescriptionLanguage	nl
DCM::EndorsingAuthority.Address	
DCM::EndorsingAuthority.Name	PM
DCM::EndorsingAuthority.Telecom	
DCM::Id	2.16.840.1.113883.2.4.3.11.60.40.3.7.4
DCM::KeywordList	drugsgebruik, verdovende middelen, middelen gebruik, drugs
DCM::LifecycleStatus	Final
DCM::ModelerList	Kerngroep Registratie aan de Bron
DCM::Name	nl.zorg.DrugsGebruik
DCM::PublicationDate	04-09-2017
DCM::PublicationStatus	Prepublished
DCM::ReviewerList	Projectgroep Generieke Overdrachtsgegevens & Kerngroep Registratie aan de Bron
DCM::RevisionDate	04-09-2017
DCM::Superseeds	nl.zorg.DrugsGebruik-v3.0
DCM::Version	3.1
HCIM::PublicationLanguage	EN

1.1 Revision History

Publicatieversie 1.0 (15-02-2013)

Publicatieversie 1.1 (01-07-2013)

Publicatieversie 1.2 (01-04-2015)

Bevat: ZIB-138, ZIB-139, ZIB-158, ZIB-161, ZIB-167, ZIB-224, ZIB-225, ZIB-308, ZIB-312, ZIB-313, ZIB-316, ZIB-319.

Incl. algemene wijzigingsverzoeken:

ZIB-94, ZIB-154, ZIB-200, ZIB-201, ZIB-309, ZIB-324, ZIB-326.

Publicatieversie 1.2.1 (22-05-2015)

Bevat: ZIB-388.

Publicatieversie 1.2.2 (16-07-2015)

Bevat: ZIB-418.

Publicatieversie 3.0 (01-05-2016)

Bevat: ZIB-453.

Publicatieversie 3.1 (04-09-2017)

Bevat: ZIB-475, ZIB-488, ZIB-505, ZIB-512, ZIB-564.

1.2 Concept

Drugs (or: narcotics, amphetamines, intoxicants, highs, hallucinogenics, illegal substances or dope) is a collective term for drugs and chemical substances with a more or less 'drugging' (anesthetic, boosting and/or hallucinogenic) effect and which can lead to addiction. Drug [Online] Available at: nl.Wikipedia.org/wiki/drug [Accessed: 11 February 2015].

This information model describes the information asked of the patient about their drug use.

1.3 Mindmap

1.4 Purpose

Documenting and sharing registration of the drug use, as described in the concept.

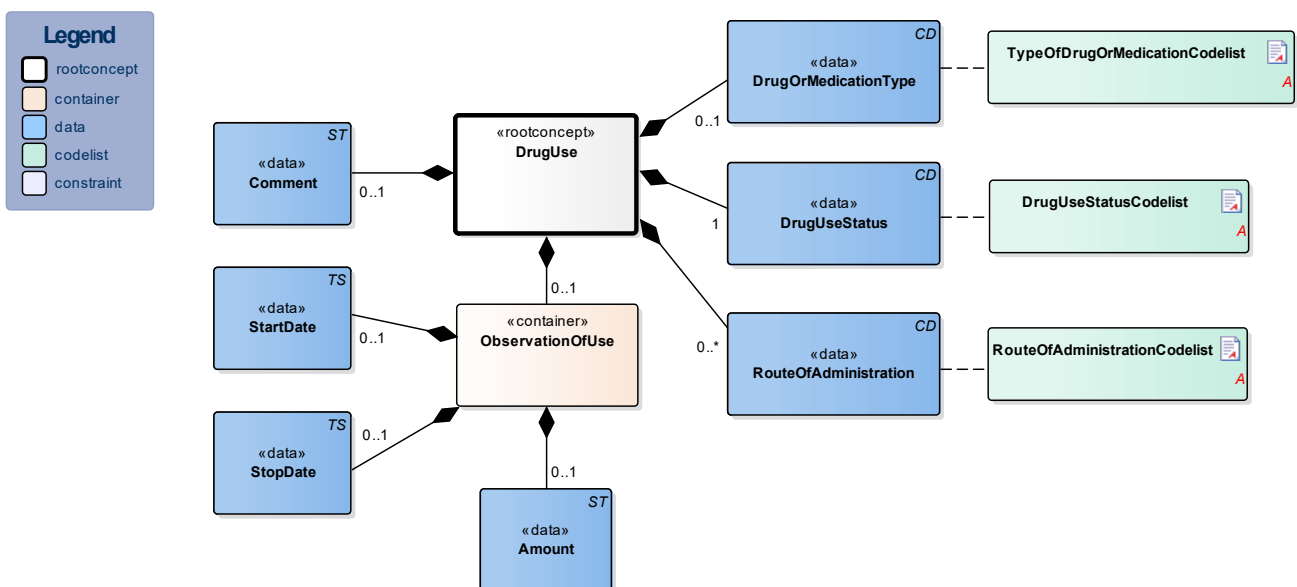
1.5 Patient Population

1.6 Evidence Base

Though this information model can also be used to abuse (the patient's own) medication, the project group eventually decided to focus on information on drug use, as described in the concept.

Seeing as there is a large variety of ways to record the amount of drugs used, we decided that this part is to be entered as free text.

1.7 Information Model



«rootconcept»	DrugUse
Definitie	Root concept of the DrugUse information model. This concept contains all data elements of the DrugUse information model.

Datatype	
DCM::ConceptId	NL-CM:7.4.1
Opties	

«container»	ObservationOfUse
Definitie	Container for ObservationOfUse. This container contains all data elements of the ObservationOfUse container.
Datatype	
DCM::ConceptId	NL-CM:7.4.5
Opties	

«data»	StartDate
Definitie	The date on which the patient started using.
Datatype	TS
DCM::ConceptId	NL-CM:7.4.6
DCM::ExampleValue	1975
Opties	

«data»	StopDate
Definitie	The date on which the patient quit using
Datatype	TS
DCM::ConceptId	NL-CM:7.4.7
DCM::ExampleValue	28-02-2012
Opties	

«data»	Amount
Definitie	The number of units (pills, joints, shots etc.) per day, week, month or year or the frequency of use.
Datatype	ST
DCM::ConceptId	NL-CM:7.4.8
DCM::ExampleValue	3 maal per week
Opties	

«data»	Comment
Definitie	Relevant comments on the drug use.
Datatype	ST
DCM::ConceptId	NL-CM:7.4.9
DCM::DefinitionCode	LOINC: 48767-8 Annotation comment
DCM::ExampleValue	XTC
Opties	

«data»	DrugOrMedicationType
Definitie	Type of drug used by the patient.
Datatype	CD
DCM::ConceptId	NL-CM:7.4.2
DCM::ExampleValue	LSD

DCM::ValueSet	TypeOfDrugOrMedicationCodelist	OID: 2.16.840.1.113883.2.4.3.11.60.40.2.7.4.1
Opties		

«data»	DrugUseStatus	
Definitie	Indication stating whether there was any drug use in the past or present.	
Datatype	CD	
DCM::ConceptId	NL-CM:7.4.3	
DCM::DefinitionCode	SNOMED CT: 228366006 Finding related to drug misuse behaviour (finding)	
DCM::ExampleValue	Huidig gebruik	
DCM::ValueSet	DrugUseStatusCodelist	OID: 2.16.840.1.113883.2.4.3.11.60.40.2.7.4.2
Opties		

«data»	RouteOfAdministration	
Definitie	The way the drugs are used.	
Datatype	CD	
DCM::ConceptId	NL-CM:7.4.4	
DCM::DefinitionCode	SNOMED CT: 410675002 Route of administration	
DCM::ExampleValue	intravenous (spuiten)	
DCM::ValueSet	RouteOfAdministrationCodelist	OID: 2.16.840.1.113883.2.4.3.11.60.40.2.7.4.3
Opties		

«document»	DrugUseStatusCodelist	
Definitie		
Datatype		
DCM::ValueSetId	2.16.840.1.113883.2.4.3.11.60.40.2.7.4.2	
Opties		

DrugsGebruikStatusCodelijst			OID: 2.16.840.1.113883.2.4.3.11.60.40.2.7.4.2	
Concept Name	Concept Code	Coding Syst. Name	Coding System OID	Description
Misuses drugs (finding)	361055000	SNOMED CT	2.16.840.1.113883.6.96	gebruikt drugs
Does not misuse drugs (finding)	228367002	SNOMED CT	2.16.840.1.113883.6.96	gebruikt geen drugs
Has never misused drugs	228368007	SNOMED CT	2.16.840.1.113883.6.96	heeft nooit drugs gebruikt
Misused drugs in past (finding)	44870007	SNOMED CT	2.16.840.1.113883.6.96	heeft in het verleden drugs gebruikt
Other	OTH	NullFlavor	2.16.840.1.113883.5.1008	anders

«document»	RouteOfAdministrationCodelist	
Definitie		
Datatype		

DCM::ValueSetId	2.16.840.1.113883.2.4.3.11.60.40.2.7.4.3			
Opties				
ToedieningswegCodelijst		OID: 2.16.840.1.113883.2.4.3.11.60.40.2.7.4.3		
Concept Name	Concept Code	Coding Syst. Name	Coding System OID	Description
ORAAL	9	G-Standaard Toedieningswegen	2.16.840.1.113883.2.4.4.9	oraal
NASAAL	6	G-Standaard Toedieningswegen	2.16.840.1.113883.2.4.4.9	nasaal (snuiven)
INHALATIE	62	G-Standaard Toedieningswegen	2.16.840.1.113883.2.4.4.9	Inhalatie (roken)
INTRAVENEUS	5	G-Standaard Toedieningswegen	2.16.840.1.113883.2.4.4.9	Intraveneus (spuiten)
Other	OTH	NullFlavor	2.16.840.1.113883.5.1008	Anders

«document»	TypeOfDrugOrMedicationCodelist	
Definitie		
Datatype		
DCM::ValueSetId	2.16.840.1.113883.2.4.3.11.60.40.2.7.4.1	
Opties		

DrugsOfGeneesmiddelSoortCodelijst			OID: 2.16.840.1.113883.2.4.3.11.60.40.2.7.4.1	
Concept Name	Concept Code	Coding Syst. Name	Coding System OID	Description
Heroin (substance)	387341002	SNOMED CT	2.16.840.1.113883.6.96	Heroïne
Benzodiazepine (substance)	372664007	SNOMED CT	2.16.840.1.113883.6.96	Benzodiazepine
Methadone (substance)	387286002	SNOMED CT	2.16.840.1.113883.6.96	Methadon
Hydroxybutyric acid (substance)	62821004	SNOMED CT	2.16.840.1.113883.6.96	GHB
Cocaine (substance)	387085005	SNOMED CT	2.16.840.1.113883.6.96	Cocaïne
Cocaine freebase (substance)	229003004	SNOMED CT	2.16.840.1.113883.6.96	Crack, base coke
Methylenedioxymethamphetamine (substance)	288459003	SNOMED CT	2.16.840.1.113883.6.96	MDMA
Amphetamine (substance)	703842006	SNOMED CT	2.16.840.1.113883.6.96	Amfetamine, speed
Cannabis (substance)	398705004	SNOMED CT	2.16.840.1.113883.6.96	Cannabis, wiet marihuana, hasj
Hallucinogenic mushrooms (substance)	229006007	SNOMED CT	2.16.840.1.113883.6.96	Paddo's
Lysergic acid diethylamide (substance)	15698006	SNOMED CT	2.16.840.1.113883.6.96	LSD
Ketamine (substance)	373464007	SNOMED CT	2.16.840.1.113883.6.96	Ketamine
Phencyclidine (substance)	9721008	SNOMED CT	2.16.840.1.113883.6.96	PCP
Methamphetamine (substance)	387499002	SNOMED CT	2.16.840.1.113883.6.96	Crystal meth, methamphetamine
Anabolic steroid (substance)	111151007	SNOMED CT	2.16.840.1.113883.6.96	Anabole steroïde
Laxative (substance)	372800002	SNOMED CT	2.16.840.1.113883.6.96	Laxans
Buprenorphine (substance)	387173000	SNOMED CT	2.16.840.1.113883.6.96	Buprenorfine
Fentanyl (substance)	373492002	SNOMED CT	2.16.840.1.113883.6.96	Fentanyl
Barbiturate (substance)	372798009	SNOMED CT	2.16.840.1.113883.6.96	Barbituraat
Other	OTH	NullFlavor	2.16.840.1.113883.5.1008	Anders

1.8 Example Instances

Soort Middel	Drugs Gebruik Status	Start datum	Stop datum	Toedieningsweg	Hoeveelheid	Toelichting
XTC	misbruikt drugs	1985		oraal	2x per maand	Op feestjes en in uitgaanscircuit. Vroeger wat meer dan tegenwoordig.
Soort Middel	Drugs Gebruik Status	Start datum	Stop datum	Toedieningsweg	Hoeveelheid	Toelichting
Heroïne	heeft in het verleden drugs gebruikt	1970	1985	intraveneus	3x per week	

1.9 Instructions

1.10 Interpretation

1.11 Care Process

1.12 Example of the Instrument

1.13 Constraints

1.14 Issues

1.15 References

1.16 Functional Model

1.17 Traceability to other Standards

1.18 Disclaimer

This Health and Care Information Model (a.k.a Clinical Building Block) has been made in collaboration with several different parties in healthcare. These parties asked Nictiz to manage good maintenance and development of the information models. Hereafter, these parties and Nictiz are referred to as the collaborating parties. The collaborating parties paid utmost attention to the reliability and topicality of the data in these Health and Care Information Models. Omissions and inaccuracies may however occur. The collaborating parties are not liable for any damages resulting from omissions or inaccuracies in the information provided, nor are they liable for damages resulting from problems caused by or inherent to distributing information on the internet, such as malfunctions, interruptions, errors or delays in information or services provide by the parties to you or by you to the parties via a website or via e-mail, or any other digital means. The collaborating parties will also not accept liability for any damages resulting from the use of data, advice or ideas provided by or on behalf of the parties by means of this Health and Care Information Model. The parties will not accept any liability for the content of information in this Health and Care Information Model to which or from which a hyperlink is referred. In the event of contradictions in mentioned Health and Care Information Model documents and files, the most recent and highest version of the listed order in the revisions will indicate the priority of the documents in question. If information included in the digital version of this Health and Care Information Model is also distributed in writing, the written version will be leading in case of textual differences. This will apply if both have the same version number and date. A definitive version has priority over a draft version. A revised version has priority over previous versions.

1.19 Terms of Use

The user may use the information in this Health and Care Information Model without limitations. The copyright provisions in the paragraph concerned apply to copying, distributing and passing on information from this Health and Care Information Model.

1.20 Copyrights

The user may copy, distribute and pass on the information in this Health and Care Information Model under the conditions that apply for Creative Commons license Attribution-NonCommercial-ShareAlike 3.0 Netherlands (CC BY-NC-SA-3.0). The content is available under Creative Commons Attribution-NonCommercial-ShareAlike 3.0 (see also <http://creativecommons.org/licenses/by-nc-sa/3.0/nl/>)