

# Health & Care Information Model:

nl.zorg.CareAgreement-v1.1

Status: Final

Release: 2024

Release status: Prepublished

Managed by:



# Content

<b>1. nl.zorg.CareAgreement-v1.1</b> .....	<b>3</b>
1.1 Revision History.....	3
1.2 Concept.....	3
1.3 Mindmap.....	3
1.4 Purpose.....	3
1.5 Patient Population.....	3
1.6 Evidence Base.....	4
1.7 Information Model.....	4
1.8 Example Instances.....	7
1.9 Instructions.....	8
1.10 Interpretation.....	8
1.11 Care Process.....	8
1.12 Example of the Instrument.....	8
1.13 Constraints.....	8
1.14 Issues.....	8
1.15 References.....	8
1.16 Functional Model.....	8
1.17 Traceability to other Standards.....	9
1.18 Disclaimer.....	9
1.19 Terms of Use.....	9
1.20 Copyrights.....	9

# 1. nl.zorg.CareAgreement-v1.1

DCM::CoderList	Projectgroep NHG
DCM::ContactInformation.Address	*
DCM::ContactInformation.Name	*
DCM::ContactInformation.Telecom	*
DCM::ContentAuthorList	*
DCM::CreationDate	20-03-2020
DCM::DeprecatedDate	
DCM::DescriptionLanguage	nl
DCM::EndorsingAuthority.Address	
DCM::EndorsingAuthority.Name	*
DCM::EndorsingAuthority.Telecom	
DCM::Id	2.16.840.1.113883.2.4.3.11.60.40.3.16.2
DCM::KeywordList	
DCM::LifecycleStatus	Final
DCM::ModelerList	*
DCM::Name	nl.zorg.ZorgAfspraak
DCM::PublicationDate	15-04-2024
DCM::PublicationStatus	Prepublished
DCM::ReviewerList	
DCM::RevisionDate	12-09-2023
DCM::Supersedes	nl.zorg.ZorgAfspraak-v1.0.1
DCM::Version	1.1
HCIM::PublicationLanguage	EN

## 1.1 Revision History

Publicatieversie 1.0 (01-09-2020)

Publicatieversie 1.0.1 (10-06-2022)

Bevat: ZIB-1758.

Publicatieversie 1.1 (15-10-2023)

Bevat: ZIB-1742.

## 1.2 Concept

Documentation of agreements between patient, possibly the patient's contact person(s), and health professional(s) with respect to care, treatment, or activities that should be performed or explicitly avoided. The Care Agreement focuses on a specific activity in the context of treatment and care.

## 1.3 Mindmap

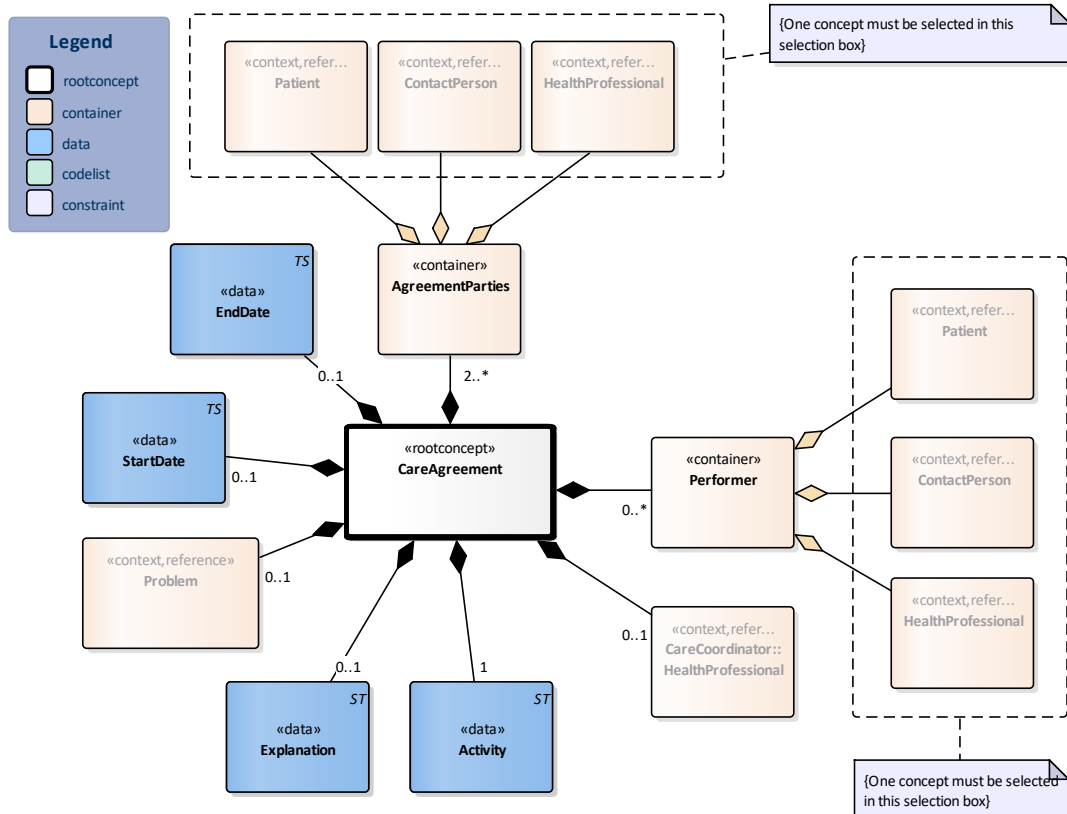
## 1.4 Purpose

The patient, possibly the patient's contact persons, and health care professional(s) make care agreements about specific activities to achieve healthcare goals, plan making or execution of those plans. This mainly concerns clarifying who does what and when, possibly also how, where and why this is carried out.

## 1.5 Patient Population

## 1.6 Evidence Base

## 1.7 Information Model



<b>«rootconcept»</b>	<b>CareAgreement</b>	
<b>Definitie</b>	Root concept of the CareAgreement information model. This root concept contains all data elements of the CareAgreement information model.	
<b>Datatype</b>		
<b>DCM::ConceptId</b>	NL-CM:16.2.1	
<b>DCM::DefinitionCode</b>	SNOMED CT: 288834001	Agreeing on care plan
<b>Opties</b>		

<b>«data»</b>	<b>StartDate</b>	
<b>Definitie</b>	The date when the care agreement starts.	
<b>Datatype</b>	TS	
<b>DCM::ConceptId</b>	NL-CM:16.2.16	
<b>Opties</b>		

<b>«data»</b>	<b>EndDate</b>	
<b>Definitie</b>	The date when the care agreement has ended. A care agreement can also be ended before the agreed activity has actually been performed.	
<b>Datatype</b>	TS	
<b>DCM::ConceptId</b>	NL-CM:16.2.15	
<b>Opties</b>		

<b>«container»</b>	<b>AgreementParties</b>	
<b>Definitie</b>	Container of the AgreementParties concept. This container contains all data elements of the AgreementParties concept.	
<b>Datatype</b>		

<b>DCM::ConceptId</b>	NL-CM:16.2.3	
<b>Opties</b>		

<b>«context»</b>	<b>Patient</b>	
<b>Definitie</b>	The patient himself/herself as participant in making the care agreement.	
<b>Datatype</b>		
<b>DCM::ConceptId</b>	NL-CM:16.2.4	
<b>DCM::DefinitionCode</b>	SNOMED CT: 116154003 Patient	
<b>DCM::ReferencedConceptId</b>	NL-CM:0.1.1	This is a reference to the rootconcept of information model Patient.
<b>Opties</b>		

<b>«context»</b>	<b>ContactPerson</b>	
<b>Definitie</b>	The contact person of the patient who took part in making the care agreement.	
<b>Datatype</b>		
<b>DCM::ConceptId</b>	NL-CM:16.2.5	
<b>DCM::DefinitionCode</b>	SNOMED CT: 70862002 Contact person	
<b>DCM::ReferencedConceptId</b>	NL-CM:3.1.1	This is a reference to the rootconcept of information model ContactPerson.
<b>Opties</b>		

<b>«context»</b>	<b>HealthProfessional</b>	
<b>Definitie</b>	The health professional who took part in making the care agreement.	
<b>Datatype</b>		
<b>DCM::ConceptId</b>	NL-CM:16.2.2	
<b>DCM::DefinitionCode</b>	SNOMED CT: 223366009 Healthcare professional	
<b>DCM::ReferencedConceptId</b>	NL-CM:17.1.1	This is a reference to the rootconcept of information model HealthProfessional.
<b>Opties</b>		

<b>«container»</b>	<b>Performer</b>	
<b>Definitie</b>	Container of the Performer concept. This container contains all data elements of the Performer concept.	
<b>Datatype</b>		
<b>DCM::ConceptId</b>	NL-CM:16.2.6	
<b>DCM::DefinitionCode</b>	ParticipationType: PRF Performer	
<b>Opties</b>		

<b>«context»</b>	<b>Patient</b>	
<b>Definitie</b>	The patient as performer of the agreed action or activity.	
<b>Datatype</b>		
<b>DCM::ConceptId</b>	NL-CM:16.2.7	
<b>DCM::DefinitionCode</b>	SNOMED CT: 116154003 Patient	
<b>DCM::ReferencedConceptId</b>	NL-CM:0.1.1	This is a reference to the rootconcept of information model Patient.
<b>Opties</b>		

<b>«context»</b>	<b>ContactPerson</b>	
<b>Definitie</b>	A contact person of the patient as performer of the agreed action or	

	activity.	
<b>Datatype</b>		
<b>DCM::ConceptId</b>	NL-CM:16.2.8	
<b>DCM::DefinitionCode</b>	SNOMED CT: 70862002 Contact person	
<b>DCM::ReferencedConceptId</b>	NL-CM:3.1.1	This is a reference to the rootconcept of information model ContactPerson.
<b>Opties</b>		

<b>«context»</b>	<b>HealthProfessional</b>	
<b>Definitie</b>	A health professional as performer of the agreed action or activity.	
<b>Datatype</b>		
<b>DCM::ConceptId</b>	NL-CM:16.2.9	
<b>DCM::DefinitionCode</b>	SNOMED CT: 223366009 Healthcare professional	
<b>DCM::ReferencedConceptId</b>	NL-CM:17.1.1	This is a reference to the rootconcept of information model HealthProfessional.
<b>Opties</b>		

<b>«context»</b>	<b>CareCoordinator::HealthProfessional</b>	
<b>Definitie</b>	The health care professional who will coordinate the agreed action or activity.	
<b>Datatype</b>		
<b>DCM::ConceptId</b>	NL-CM:16.2.10	
<b>DCM::DefinitionCode</b>	SNOMED CT: 768820003 Care coordinator	
<b>DCM::ReferencedConceptId</b>	NL-CM:17.1.1	This is a reference to the rootconcept of information model HealthProfessional.
<b>Opties</b>		

<b>«data»</b>	<b>Activity</b>	
<b>Definitie</b>	The action or activity that has been agreed to perform.	
<b>Datatype</b>	ST	
<b>DCM::ConceptId</b>	NL-CM:16.2.11	
<b>DCM::DefinitionCode</b>	SNOMED CT: 257733005 Activity	
<b>DCM::ExampleValue</b>	elke week zelf bloeddruk thuis meten	
<b>Opties</b>		

<b>«data»</b>	<b>Explanation</b>	
<b>Definitie</b>	Explanation about the action to be performed and to be evaluated.	
<b>Datatype</b>	ST	
<b>DCM::ConceptId</b>	NL-CM:16.2.12	
<b>DCM::DefinitionCode</b>	LOINC: 48767-8 Annotation comment [Interpretation] Narrative	
<b>DCM::ExampleValue</b>	Elke week op de zelfde tijd na 5 minuten rust de bloeddruk meten en noteren.	
<b>Opties</b>		

<b>«context»</b>	<b>Problem</b>	
<b>Definitie</b>	The patient's disease or problem as reason for the care agreement.	

<b>Datatype</b>		
<b>DCM::ConceptId</b>	NL-CM:16.2.13	
<b>DCM::DefinitionCode</b>	SNOMED CT: 363702006 Has focus	
<b>DCM::ReferencedConceptId</b>	NL-CM:5.1.1	This is a reference to the rootconcept of information model Problem.
<b>Opties</b>		

	<b>Legend</b>	
<b>Definitie</b>		
<b>Datatype</b>		
<b>Opties</b>		

	<b>Constraint</b>	
<b>Definitie</b>	One concept must be selected in this selection box	
<b>Datatype</b>		
<b>Opties</b>		

	<b>Constraint</b>	
<b>Definitie</b>	One concept must be selected in this selection box	
<b>Datatype</b>		
<b>Opties</b>		

## 1.8 Example Instances

ZorgAfspraak		
Activiteit	Minimaal 3 keer per week dagboek in de E-Health app invullen.	
BeginDatum	15/09/2020	
EindDatum	--	
Toelichting	POH-GGZ van de huisartspraktijk leest en reageert wekelijks (indien nodig).	
Probleem		
ProbleemNaam		
Depressieve stoornissen		
AfspraakPartijen		
ZorgverlenerNaam	Specialisme	Zorgaanbieder
Drs. J. van Dam	klinische psychologie	Parnassia Centrum West
Patient	Geboortedatum	
A.S. van Dongen	09/07/2001	
Contactpersoon	Relatie	
M. van Dongen	Moeder	
Uitvoerder		
Patient		
A.S. van Dongen		
Coordinator		
ZorgverlenerNaam	Specialisme	Zorgaanbieder
K. Peters	POH-GGZ	Huisartspraktijk de Molen

## 1.9 Instructions

## 1.10 Interpretation

## 1.11 Care Process

## 1.12 Example of the Instrument

## 1.13 Constraints

## 1.14 Issues

## 1.15 References

## 1.16 Functional Model



## 1.17 Traceability to other Standards

### 1.18 Disclaimer

The Health and Care Information Models (a.k.a Clinical Building Block) has been made in collaboration with several different parties in healthcare. These parties asked Nictiz to manage good maintenance and development of the information models. Hereafter, these parties and Nictiz are referred to as the collaborating parties. The collaborating parties paid utmost attention to the reliability and topicality of the data in these Health and Care Information Models. Omissions and inaccuracies may however occur. The collaborating parties are not liable for any damages resulting from omissions or inaccuracies in the information provided, nor are they liable for damages resulting from problems caused by or inherent to distributing information on the internet, such as malfunctions, interruptions, errors or delays in information or services provide by the parties to you or by you to the parties via a website or via e-mail, or any other digital means. The collaborating parties will also not accept liability for any damages resulting from the use of data, advice or ideas provided by or on behalf of the parties by means of the Health and Care Information Models. The parties will not accept any liability for the content of information in this Health and Care Information Model to which or from which a hyperlink is referred. In the event of contradictions in mentioned Health and Care Information Model documents and files, the most recent and highest version of the listed order in the revisions will indicate the priority of the documents in question. If information included in the digital version of a Health and Care Information Model is also distributed in writing, the written version will be leading in case of textual differences. This will apply if both have the same version number and date. A definitive version has priority over a draft version. A revised version has priority over previous versions.

### 1.19 Terms of Use

The user may use the Health and Care Information Models without limitations. The copyright provisions in the paragraph concerned apply to copying, distributing and passing on the Health and Care Information Models.

### 1.20 Copyrights

A Health and Care Information Model qualifies as a work within the meaning of Section 10 of the Copyright Act (Auteurswet). Copyrights protect the Health and Care Information Models and these rights are owned by the cooperating parties.

The user may copy, distribute and pass on the information in this Health and Care Information Model under the conditions that apply for Creative Commons license Attribution-NonCommercial-ShareAlike 3.0 Netherlands (CC BY-NC-SA-3.0).

The content is available under Creative Commons Attribution-NonCommercial-ShareAlike 3.0 (see also <http://creativecommons.org/licenses/by-nc-sa/3.0/nl/>)

This does not apply to information from third parties that sometimes is used and / or referred to in a Health and Care Information Model, for example to an international medical terminology system. Any (copyright) rights that protect this information are not owned by the cooperating parties but by those third parties.

Nictiz is the independent national competence centre for electronic exchange of health and care information. The activities of Nictiz include the targeted development and management of information standards at the request of and in partnership with the stakeholders in healthcare. Nictiz advises these parties on all aspects of information exchange and identifies (future) national and international developments.

**Nictiz**

P.O. Box 19121  
2500 CC Den Haag  
Oude Middenweg 55  
2491 AC Den Haag

070-3173450  
[info@nictiz.nl](mailto:info@nictiz.nl)  
[www.nictiz.nl](http://www.nictiz.nl)

