

# Health & Care Information Model:

nl.zorg.part.NameInformation-v1.1

Status: Final

Release: 2020

Release status: Published

Managed by:



# Content

<b>1. nl.zorg.part.NameInformation-v1.1</b>	<b>3</b>
1.1 Revision History	3
1.2 Concept	3
1.3 Mindmap	3
1.4 Purpose	3
1.5 Patient Population	3
1.6 Evidence Base	4
1.7 Information Model	4
1.8 Example Instances	6
1.9 Instructions	7
1.10 Interpretation	7
1.11 Care Process	7
1.12 Example of the Instrument	7
1.13 Constraints	7
1.14 Issues	7
1.15 References	7
1.16 Functional Model	7
1.17 Traceability to other Standards	7
1.18 Disclaimer	7
1.19 Terms of Use	8
1.20 Copyrights	8

# 1. nl.zorg.part.NameInformation-v1.1

DCM::CoderList	Kerngroep Registratie aan de Bron
DCM::ContactInformation.Address	*
DCM::ContactInformation.Name	*
DCM::ContactInformation.Telecom	*
DCM::ContentAuthorList	Projectgroep Generieke Overdrachtsgegevens & Kerngroep Registratie aan de Bron
DCM::CreationDate	3-7-2017
DCM::DeprecatedDate	
DCM::DescriptionLanguage	nl
DCM::EndorsingAuthority.Address	
DCM::EndorsingAuthority.Name	PM
DCM::EndorsingAuthority.Telecom	
DCM::Id	2.16.840.1.113883.2.4.3.11.60.40.3.20.4
DCM::KeywordList	
DCM::LifecycleStatus	Final
DCM::ModelerList	Kerngroep Registratie aan de Bron
DCM::Name	nl.zorg.part.Naamgegevens
DCM::PublicationDate	01-09-2020
DCM::PublicationStatus	Published
DCM::ReviewerList	Projectgroep Generieke Overdrachtsgegevens & Kerngroep Registratie aan de Bron
DCM::RevisionDate	29-07-2020
DCM::Supersedes	nl.zorg.part.Naamgegevens-v1.0.1
DCM::Version	1.1
HCIM::PublicationLanguage	EN

## 1.1 Revision History

Publicatieversie 1.0 (04-09-2017)

Publicatieversie 1.0.1 (31-12-2017)  
Bevat: ZIB-614.

Publicatieversie 1.1 (01-09-2020)  
Bevat: ZIB-1067.

## 1.2 Concept

Name information includes a person's given names, nickname, last name and possibly the partner's last name.

This is a partial information model.

## 1.3 Mindmap

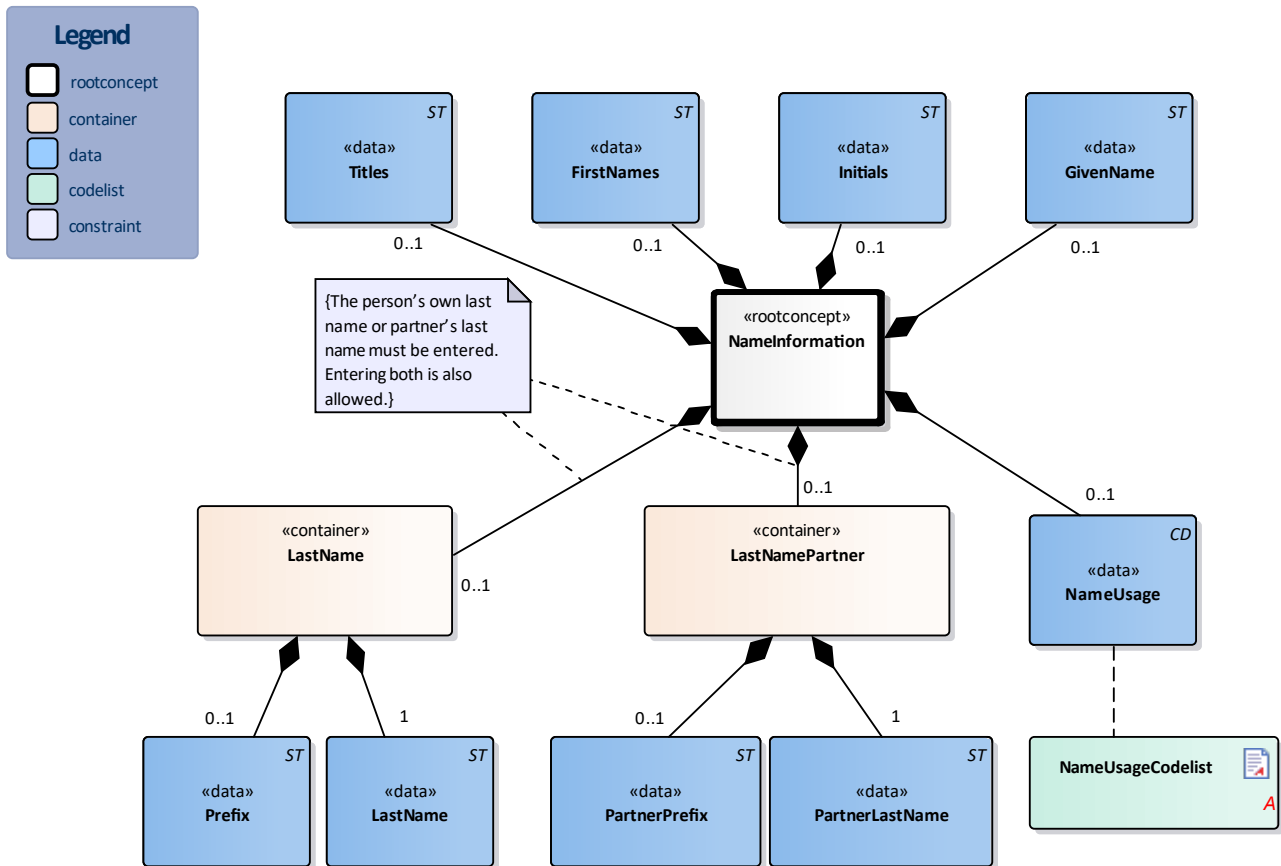
## 1.4 Purpose

Name information is used to identify and address person.

## 1.5 Patient Population

## 1.6 Evidence Base

## 1.7 Information Model



«rootconcept»	NameInformation
<b>Definitie</b>	Root concept of the NameInformation partial information model. This root concept contains all data elements of the NameInformation partial information model.
<b>Datatype</b>	
<b>DCM::ConceptId</b>	NL-CM:20.4.1
<b>Opties</b>	

«data»	FirstNames
<b>Definitie</b>	The person's official first names.
<b>Datatype</b>	ST
<b>DCM::ConceptId</b>	NL-CM:20.4.4
<b>DCM::ExampleValue</b>	Johanna Petronella Maria
<b>Opties</b>	

«data»	Initials
<b>Definitie</b>	The person's initials.
<b>Datatype</b>	ST
<b>DCM::ConceptId</b>	NL-CM:20.4.5
<b>DCM::ExampleValue</b>	J.P.M.
<b>Opties</b>	

«data»	GivenName	
Definitie	The name normally used to address the person.	
Datatype	ST	
DCM::ConceptId	NL-CM:20.4.6	
DCM::ExampleValue	Jo	
Opties		

«data»	NameUsage	
Definitie	This concept indicates the last name or order of last names with which the person is to be addressed.	
Datatype	CD	
DCM::ConceptId	NL-CM:20.4.7	
DCM::ExampleValue	Geslachtsnaam partner gevolgd door eigen geslachtsnaam	
DCM::ValueSet	NameUsageCodelist	OID: 2.16.840.1.113883.2.4.3.11.60.40.2.20.4.1
Opties		

«container»	LastName	
Definitie	Container of the LastName concept. This container contains all data elements of the LastName concept.	
Datatype		
DCM::ConceptId	NL-CM:20.4.2	
Opties		

«data»	Prefix	
Definitie	Prefix to the person's own last name.	
Datatype	ST	
DCM::ConceptId	NL-CM:20.4.11	
DCM::ExampleValue	van	
Opties		

«data»	LastName	
Definitie	The person's official last name	
Datatype	ST	
DCM::ConceptId	NL-CM:20.4.10	
DCM::ExampleValue	Putten	
Opties		

«container»	LastNamePartner	
Definitie	Container of the LastNamePartner concept. This container contains all data elements of the LastNamePartner concept.	
Datatype		
DCM::ConceptId	NL-CM:20.4.3	
Opties		

«data»	PartnerPrefix	
Definitie	Prefix to the partner's last name.	
Datatype	ST	
DCM::ConceptId	NL-CM:20.4.9	
DCM::ExampleValue	van der	
Opties		

«data»	PartnerLastName	
Definitie	Partner's official last name.	
Datatype	ST	
DCM::ConceptId	NL-CM:20.4.8	
DCM::ExampleValue	Giessen	
Opties		

«data»	Titles	
Definitie	Noble and scientific titles. These can assist in formulating oral and formal addressing titles.	
Datatype	ST	
DCM::ConceptId	NL-CM:20.4.12	
Opties		

«document»	NameUsageCodelist	
Definitie		
Datatype		
DCM::ValueSetBinding	Required	
DCM::ValueSetId	2.16.840.1.113883.2.4.3.11.60.40.2.20.4.1	
Opties		

NaamgebruikCodelijst			OID: 2.16.840.1.113883.2.4.3.11.60.40.2.20.4.1	
Concept Name	Concept Code	CodeSystem	CodeSystem OID	Description
Eigen geslachtsnaam	NL1	NaamGebruik	2.16.840.1.113883.2.4.3.1 1.60.101.5.4	Eigen geslachtsnaam
Geslachtsnaam partner	NL2	NaamGebruik	2.16.840.1.113883.2.4.3.1 1.60.101.5.4	Geslachtsnaam partner
Geslachtsnaam partner gevolgd door eigen geslachtsnaam	NL3	NaamGebruik	2.16.840.1.113883.2.4.3.1 1.60.101.5.4	Geslachtsnaam partner gevolgd door eigen geslachtsnaam
Eigen geslachtsnaam gevolgd door geslachtsnaam partner	NL4	NaamGebruik	2.16.840.1.113883.2.4.3.1 1.60.101.5.4	Eigen geslachtsnaam gevolgd door geslachtsnaam partner
Unknown	UNK	NullFlavors	2.16.840.1.113883.5.1008	Onbekend

	Legend
Definitie	
Datatype	
Opties	

## 1.8 Example Instances

Naamgegevens	
Achternaam	Putten
Voorvoegsels	van
AchternaamPartner	Giessen
VoorvoegselsPartner	van der
Voornamen	Johanna Petronella Maria
Initialen	J.P.M.
Roepnaam	Jo

## 1.9 Instructions

### 1.10 Interpretation

### 1.11 Care Process

### 1.12 Example of the Instrument

### 1.13 Constraints

### 1.14 Issues

### 1.15 References

### 1.16 Functional Model

### 1.17 Traceability to other Standards

### 1.18 Disclaimer

The Health and Care Information Models (a.k.a Clinical Building Block) has been made in collaboration with several different parties in healthcare. These parties asked Nictiz to manage good maintenance and development of the information models. Hereafter, these parties and Nictiz are referred to as the collaborating parties. The collaborating parties paid utmost attention to the reliability and topicality of the data in these Health and Care Information Models. Omissions and inaccuracies may however occur. The collaborating parties are not liable for any damages resulting from omissions or inaccuracies in the information provided, nor are they liable for damages resulting from problems caused by or inherent to distributing information on the internet, such as malfunctions, interruptions, errors or delays in information or services provide by the parties to you or by you to the parties via a website or via e-mail, or any other

digital means. The collaborating parties will also not accept liability for any damages resulting from the use of data, advice or ideas provided by or on behalf of the parties by means of the Health and Care Information Models. The parties will not accept any liability for the content of information in this Health and Care Information Model to which or from which a hyperlink is referred. In the event of contradictions in mentioned Health and Care Information Model documents and files, the most recent and highest version of the listed order in the revisions will indicate the priority of the documents in question. If information included in the digital version of a Health and Care Information Model is also distributed in writing, the written version will be leading in case of textual differences. This will apply if both have the same version number and date. A definitive version has priority over a draft version. A revised version has priority over previous versions.

## **1.19 Terms of Use**

The user may use the Health and Care Information Models without limitations. The copyright provisions in the paragraph concerned apply to copying, distributing and passing on the Health and Care Information Models.

## **1.20 Copyrights**

A Health and Care Information Model qualifies as a work within the meaning of Section 10 of the Copyright Act (Auteurswet). Copyrights protect the Health and Care Information Models and these rights are owned by the cooperating parties.

The user may copy, distribute and pass on the information in this Health and Care Information Model under the conditions that apply for Creative Commons license Attribution-NonCommercial-ShareAlike 3.0 Netherlands (CC BY-NC-SA-3.0).

The content is available under Creative Commons Attribution-NonCommercial-ShareAlike 3.0 (see also <http://creativecommons.org/licenses/by-nc-sa/3.0/nl/>)

This does not apply to information from third parties that sometimes is used and / or referred to in a Health and Care Information Model, for example to an international medical terminology system. Any (copyright) rights that protect this information are not owned by the cooperating parties but by those third parties.



Nictiz is the independent national competence centre for electronic exchange of health and care information. The activities of Nictiz include the targeted development and management of information standards at the request of and in partnership with the stakeholders in healthcare. Nictiz advises these parties on all aspects of information exchange and identifies (future) national and international developments.

**Nictiz**

P.O. Box 19121  
2500 CC Den Haag  
Oude Middenweg 55  
2491 AC Den Haag

070-3173450  
[info@nictiz.nl](mailto:info@nictiz.nl)  
[www.nictiz.nl](http://www.nictiz.nl)

