

# Health & Care Information Model: nl.zorg.FamilyHistory-v3.0

Status:Final

Release:2016

Release status: Published

Managed by:

Better health  
through better IT

Nictiz 

# Content

<b>1. nl.zorg.FamilyHistory-v3.0</b>	<b>3</b>
1.1 Revision History	3
1.2 Concept	3
1.3 Mindmap	3
1.4 Purpose	4
1.5 Patient Population	4
1.6 Evidence Base	4
1.7 Information Model	4
1.8 Example Instances	7
1.9 Instructions	7
1.10 Interpretation	8
1.11 Care Process	8
1.12 Example of the Instrument	8
1.13 Constraints	8
1.14 Issues	8
1.15 References	8
1.16 Functional Model	8
1.17 Traceability to other Standards	8
1.18 Disclaimer	8
1.19 Terms of Use	8
1.20 Copyrights	9

# 1. nl.zorg.FamilyHistory-v3.0

DCM::CoderList	Kerngroep Registratie aan de Bron
DCM::ContactInformation.Address	*
DCM::ContactInformation.Name	*
DCM::ContactInformation.Telecom	*
DCM::ContentAuthorList	Projectgroep Generieke Overdrachtsgegevens & Kerngroep Registratie aan de Bron
DCM::CreationDate	15-02-2013
DCM::DeprecatedDate	
DCM::DescriptionLanguage	nl
DCM::EndorsingAuthority.Address	
DCM::EndorsingAuthority.Name	PM
DCM::EndorsingAuthority.Telecom	
DCM::Id	2.16.840.1.113883.2.4.3.11.60.40.3.6.1
DCM::KeywordList	familieanamnese, anamnese
DCM::LifecycleStatus	Final
DCM::ModelerList	Kerngroep Registratie aan de Bron
DCM::Name	nl.zorg.Familieanamnese
DCM::PublicationDate	1-5-2016
DCM::PublicationStatus	Published
DCM::ReviewerList	Projectgroep Generieke Overdrachtsgegevens & Kerngroep Registratie aan de Bron
DCM::RevisionDate	1-5-2016
DCM::Superseeds	nl.nfu.Familieanamnese-v2.0
DCM::Version	3.0
HCIM::PublicationLanguage	EN

## 1.1 Revision History

Publicatieversie 1.0 (15-02-2013)

Publicatieversie 1.1 (01-07-2013)

Publicatieversie 2.0 (01-04-2015)

Bevat: ZIB-73, ZIB-308.

Incl. algemene wijzigingsverzoeken:

ZIB-94, ZIB-154, ZIB-200, ZIB-201, ZIB-309, ZIB-324, ZIB-326.

Publicatieversie 3.0 (01-05-2016)

Bevat: ZIB-444, ZIB-453.

## 1.2 Concept

The family history describes any health problems of biological relatives that may be relevant. The family history contains information on the medical disorders of the family member and the biological relationship between the patient and the described family member.

## 1.3 Mindmap

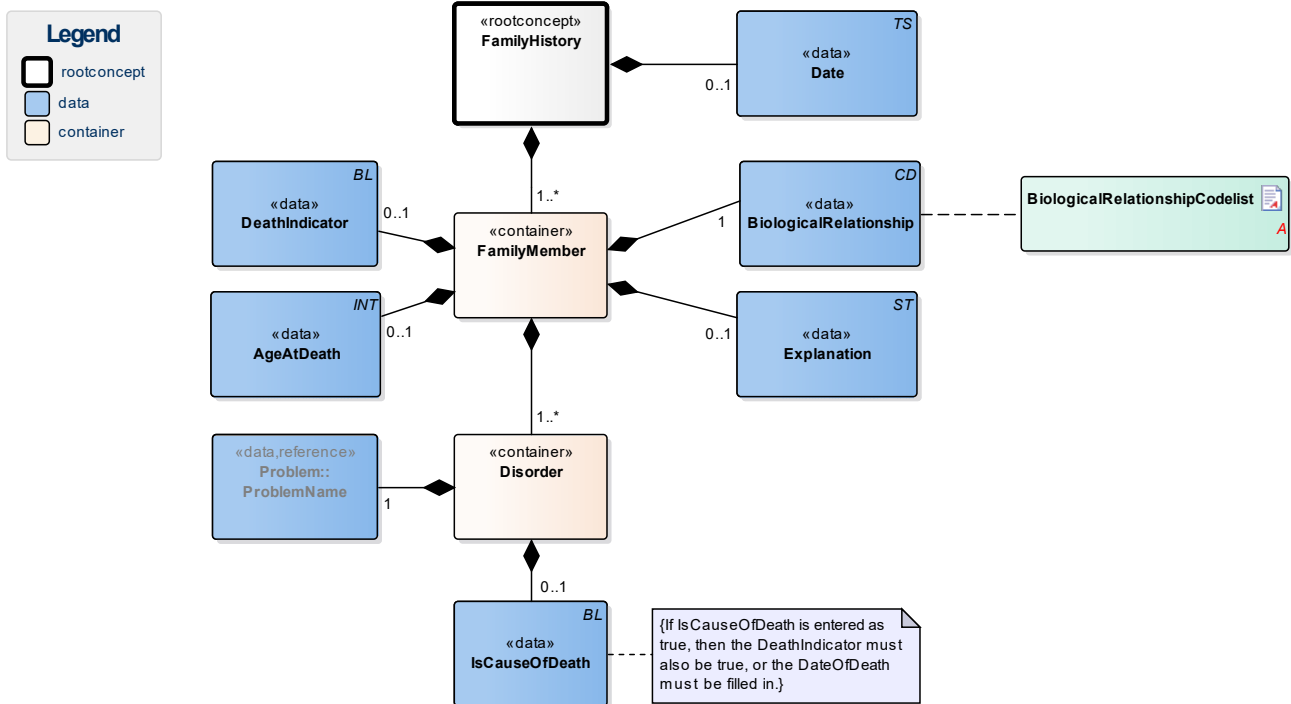
## 1.4 Purpose

Recording the patient's family members' health problems. This component can be relevant in estimating the risk of these health problems occurring in the patient. This component can also partially influence the decision determining which diagnostics are or are not to be run: a high-risk patient might be more likely to receive extensive diagnostics, while a simpler test could suffice for a low-risk patient.

## 1.5 Patient Population

## 1.6 Evidence Base

## 1.7 Information Model



«rootconcept»	FamilyHistory
Definitie	Root concept of the FamilyHistory information model. This root concept contains all data elements of the FamilyHistory information model.
Datatype	
DCM::ConceptId	NL-CM:6.1.1
Opties	

«data»	Date
Definitie	Date on which the family history was entered. A 'vague' date is permitted.
Datatype	TS
DCM::ConceptId	NL-CM:6.1.2
DCM::ExampleValue	3-1999
Opties	

«container»	FamilyMember	
Definitie	Container of the FamilyMember concept. This container contains all data elements of the FamilyMember concept.	
Datatype		
DCM::ConceptId	NL-CM:6.1.3	
Opties		

«data»	BiologicalRelationship	
Definitie	Indicates the biological relationship of the family member to the patient.	
Datatype	CD	
DCM::ConceptId	NL-CM:6.1.4	
DCM::ExampleValue	Broer	
DCM::ValueSet	BiologicalRelationshipCodeList	OID: 2.16.840.1.113883.2.4.3.11.60.40.2.6.1.1
Opties		

«data»	Explanation	
Definitie	Explanation with information on the family member which might be relevant to the family history.	
Datatype	ST	
DCM::ConceptId	NL-CM:6.1.5	
DCM::DefinitionCode	LOINC: 48767-8 Annotation comment	
Opties		

«data»	DeathIndicator	
Definitie	An indication stating whether the family member has died.	
Datatype	BL	
DCM::ConceptId	NL-CM:6.1.10	
DCM::ExampleValue	Ja	
Opties		

«data»	AgeAtDeath	
Definitie	The age at which the family member died.	
Datatype	INT	
DCM::ConceptId	NL-CM:6.1.12	
DCM::ExampleValue	75	
Opties		

«container»	Disorder	
Definitie	Container of the Disorder concept. This container contains all data elements of the Disorder concept.	
Datatype		
DCM::ConceptId	NL-CM:6.1.6	
Opties		

«data»	Problem::ProblemName	
Definitie	The health problem of the family member in question, which is recorded	

	for the family history.	
<b>Datatype</b>		
<b>DCM::ConceptId</b>	NL-CM:6.1.7	
<b>DCM::ReferencedConceptId</b>	NL-CM:5.1.2	Dit is een verwijzing naar concept ProbleemNaam in information model OverdrachtConcern.
<b>Opties</b>		

<b>«data»</b>	<b>IsCauseOfDeath</b>	
<b>Definitie</b>	Indication stating whether the described health problem was the cause of death of the family member.	
<b>Datatype</b>	BL	
<b>DCM::ConceptId</b>	NL-CM:6.1.9	
<b>Opties</b>		

<b>«document»</b>	<b>BiologicalRelationshipCodelist</b>	
<b>Definitie</b>		
<b>Datatype</b>		
<b>DCM::ValueSetId</b>	2.16.840.1.113883.2.4.3.11.60.40.2.6.1.1	
<b>Opties</b>		

<b>BiologischeRelatieCodelijst</b>			<b>OID: 2.16.840.1.113883.2.4.3.11.60.40.2.6.1.1</b>	
<b>Concept Name</b>	<b>Code</b>	<b>Code System</b>	<b>Code System OID</b>	<b>Description</b>
Aunt	AUNT	RoleCode	2.16.840.1.113883.5.111	Tante
Cousin	COUSN	RoleCode	2.16.840.1.113883.5.111	Neef/nicht
Family Member	FAMMEMB	RoleCode	2.16.840.1.113883.5.111	Familieid
Grandchild	GRNDCHILD	RoleCode	2.16.840.1.113883.5.111	Kleinkind
Grandparent	GRPRN	RoleCode	2.16.840.1.113883.5.111	Grootouder
Grandparent	GPART	RoleCode	2.16.840.1.113883.5.111	Overgrootouder
Great grandparent	GGRPRN	RoleCode	2.16.840.1.113883.5.111	Overgrootouder
Half-brother	HBRO	RoleCode	2.16.840.1.113883.5.111	Halfbroer
Half-sister	HSIS	RoleCode	2.16.840.1.113883.5.111	Halfzus
MaternalAunt	MAUNT	RoleCode	2.16.840.1.113883.5.111	Tante/moederszijde
MaternalCousin	MCOUSN	RoleCode	2.16.840.1.113883.5.111	Neef/nicht aan moederszijde
MaternalGrandparent	MGRPRN	RoleCode	2.16.840.1.113883.5.111	Gootouder aan moederszijde
MaternalGreatgrandparent	MGGRPRN	RoleCode	2.16.840.1.113883.5.111	Overgrootouder aan moederszijde
MaternalUncle	MUNCLE	RoleCode	2.16.840.1.113883.5.111	Oom/moederszijde
Natural child	NCHILD	RoleCode	2.16.840.1.113883.5.111	Biologisch kind
Natural daughter	DAU	RoleCode	2.16.840.1.113883.5.111	Biologische dochter

Natural son	SON	RoleCode	2.16.840.1.113883.5.111	Biologische zoon
Natural father	NFTH	RoleCode	2.16.840.1.113883.5.111	Biologische vader
Natural mother	NMTH	RoleCode	2.16.840.1.113883.5.111	Biologische moeder
Natural brother	NBRO	RoleCode	2.16.840.1.113883.5.111	Biologische broer
Natural sister	NSIS	RoleCode	2.16.840.1.113883.5.111	Biologische zus
Niece/nephew	NIENEPH	RoleCode	2.16.840.1.113883.5.111	Neef/nicht, kind van oom/tante
PaternalAunt	PAUNT	RoleCode	2.16.840.1.113883.5.111	Tante/vaderszijde
PaternalCousin	PCOUSN	RoleCode	2.16.840.1.113883.5.111	Neef/nicht aan vaderszijde
PaternalGrandparent	PGRPRN	RoleCode	2.16.840.1.113883.5.111	Grootouder aan vaderszijde
PaternalGreatgrandparent	PGGRPRN	RoleCode	2.16.840.1.113883.5.111	Overgrootouder aan vaderszijde
PaternalUncle	PUNCLE	RoleCode	2.16.840.1.113883.5.111	Oom/vaderszijde
Significant other	SIGOTHR	RoleCode	2.16.840.1.113883.5.111	Ander familielid van belang
Uncle	UNCLE	RoleCode	2.16.840.1.113883.5.111	Oom

## 1.8 Example Instances

Familieanamnese									
Datum	Familielid				Aandoening				
	Biologische Relatie	Toelichting	Overlijdens Indicator	Overlijdens Datum	Probleem				Is Doodsoorzaak
					ProbleemType	ProbleemNaam	Probleem Status	Probleem StatusDatum	
1-2-2013	Tante / moeders-zijde		Ja	1997	Diagnose	mammacarcinoom	Actueel	1995	Ja
1-2-2013	Biologische moeder	moeder heeft vijf zusters			Diagnose	mammacarcinoom	Actueel	21-3-1999	
1-2-2013	Biologische vader		Ja	2005	Diagnose	myocardinfarct	Niet actueel	16-6-2001	

## 1.9 Instructions

The age at which a family member developed a disorder or the age at which the family member died can be included in the 'explanation' field if desired.

The value list *BiologicalRelationshipCodeList* contains a number of concepts which can be used for both biological and non-biological relatives: a step-father's brother can be listed as an uncle for lack of specific codes for step-uncle and real uncles. Therefore, when compiling the family history, make sure that only the biological relatives are considered.

## **1.10 Interpretation**

## **1.11 Care Process**

## **1.12 Example of the Instrument**

## **1.13 Constraints**

## **1.14 Issues**

## **1.15 References**

## **1.16 Functional Model**

## **1.17 Traceability to other Standards**

## **1.18 Disclaimer**

This Health and Care Information Model (a.k.a Clinical Building Block) has been made in collaboration with several different parties in healthcare. These parties asked Nictiz to manage good maintenance and development of the information models. Hereafter, these parties and Nictiz are referred to as the collaborating parties. The collaborating parties paid utmost attention to the reliability and topicality of the data in these Health and Care Information Models. Omissions and inaccuracies may however occur. The collaborating parties are not liable for any damages resulting from omissions or inaccuracies in the information provided, nor are they liable for damages resulting from problems caused by or inherent to distributing information on the internet, such as malfunctions, interruptions, errors or delays in information or services provide by the parties to you or by you to the parties via a website or via e-mail, or any other digital means. The collaborating parties will also not accept liability for any damages resulting from the use of data, advice or ideas provided by or on behalf of the parties by means of this Health and Care Information Model. The parties will not accept any liability for the content of information in this Health and Care Information Model to which or from which a hyperlink is referred. In the event of contradictions in mentioned Health and Care Information Model documents and files, the most recent and highest version of the listed order in the revisions will indicate the priority of the documents in question. If information included in the digital version of this Health and Care Information Model is also distributed in writing, the written version will be leading in case of textual differences. This will apply if both have the same version number and date. A definitive version has priority over a draft version. A revised version has priority over previous versions.

## **1.19 Terms of Use**

The user may use the information in this Health and Care Information Model without limitations. The



copyright provisions in the paragraph concerned apply to copying, distributing and passing on information from this Health and Care Information Model.

## **1.20 Copyrights**

The user may copy, distribute and pass on the information in this Health and Care Information Model under the conditions that apply for Creative Commons license Attribution-NonCommercial-ShareAlike 3.0 Netherlands (CC BY-NC-SA-3.0). The content is available under Creative Commons Attribution-NonCommercial-ShareAlike 3.0 (see also <http://creativecommons.org/licenses/by-nc-sa/3.0/nl/>)