

# Health & Care Information Model: nl.zorg.TNMTumorClassification-v2.0

Status: Final  
Release: 2021  
Release status: Prepublished

Managed by:



# Content

<b>1. nl.zorg.TNMTumorClassification-v2.0</b>	<b>3</b>
1.1 Revision History	3
1.2 Concept	3
1.3 Mindmap	3
1.4 Purpose	3
1.5 Patient Population	4
1.6 Evidence Base	4
1.7 Information Model	4
1.7.1 PrimaryTumor	13
1.7.2 RegionalLymphnodes	26
1.7.3 DistantMetastasis	43
1.8 Example Instances	47
1.9 Instructions	48
1.10 Interpretation	49
1.11 Care Process	50
1.12 Example of the Instrument	50
1.13 Constraints	50
1.14 Issues	50
1.15 References	50
1.16 Functional Model	50
1.17 Traceability to other Standards	50
1.18 Disclaimer	50
1.19 Terms of Use	51
1.20 Copyrights	51

# 1. nl.zorg.TNMTumorClassification-v2.0

DCM::CoderList	*
DCM::ContactInformation.Address	*
DCM::ContactInformation.Name	*
DCM::ContactInformation.Telecom	*
DCM::ContentAuthorList	*
DCM::CreationDate	15/05/2020
DCM::DeprecatedDate	
DCM::DescriptionLanguage	nl
DCM::EndorsingAuthority.Address	
DCM::EndorsingAuthority.Name	*
DCM::EndorsingAuthority.Telecom	
DCM::Id	2.16.840.1.113883.2.4.3.11.60.40.3.4.27
DCM::KeywordList	
DCM::LifecycleStatus	Final
DCM::ModelerList	*
DCM::Name	nl.zorg.TNMTumorClassificatie
DCM::PublicationDate	01-12-2021
DCM::PublicationStatus	Prepublished
DCM::ReviewerList	
DCM::RevisionDate	16-11-2021
DCM::Supersedes	nl.zorg.TNMTumorClassificatie-v1.0
DCM::Version	2.0
HCIM::PublicationLanguage	EN

## 1.1 Revision History

Publicatieversie 1.0 (01-09-2020)

Publicatieversie 2.0 (01-12-2021)

Bevat: ZIB-1224, ZIB-1227, ZIB-1244, ZIB-1246, ZIB-1284, ZIB-1285, ZIB-1287, ZIB-1384, ZIB-1412, ZIB-1528, ZIB-1529, ZIB-1530.

## 1.2 Concept

TNM Classification of Malignant Tumors (TNM) is the cancer staging system developed and is maintained by the Union for International Cancer Control (UICC). It is also used by the American Joint Committee on Cancer (AJCC) and the International Federation of Gynecology and Obstetrics (FIGO). In 1987, the UICC and AJCC staging systems were unified into the single TNM staging system. Nevertheless, there are still some differences between the two systems.

The TNM-classification is developed for solid tumors. TNM is a notation system that describes the stage of a cancer, which originates from a solid tumor, using alphanumeric codes; T describes the size of the original (primary) tumor and whether it has invaded nearby tissue, N describes nearby (regional) lymph nodes that are involved, and M describes distant metastasis (spread of cancer from one part of the body to another). In addition to T, N and M, the classification also contains other parameters that may be relevant.

## 1.3 Mindmap

## 1.4 Purpose

TNM classification is a major determinant of appropriate treatment and prognosis. Stage is an increasingly important component of cancer surveillance and cancer control and an endpoint for the evaluation of the population-based screening and early detection efforts.

The TNM staging system is the common language in which oncology health professionals can communicate on the cancer extent for individual patients as a basis for decision making on treatment management and individual prognosis but can also be used, to inform and evaluate treatment guidelines, national cancer planning and research.

The objectives of the TNM classification are the following:

- Aid treatment planning,
- Provide an indication of prognosis based on historical outcome data,
- Assist in the evaluation of treatment results,
- Facilitate the exchange of information between treatment centers,
- Contribute to continuing investigations of human malignancies,
- Support cancer control activities, including through cancer registries.

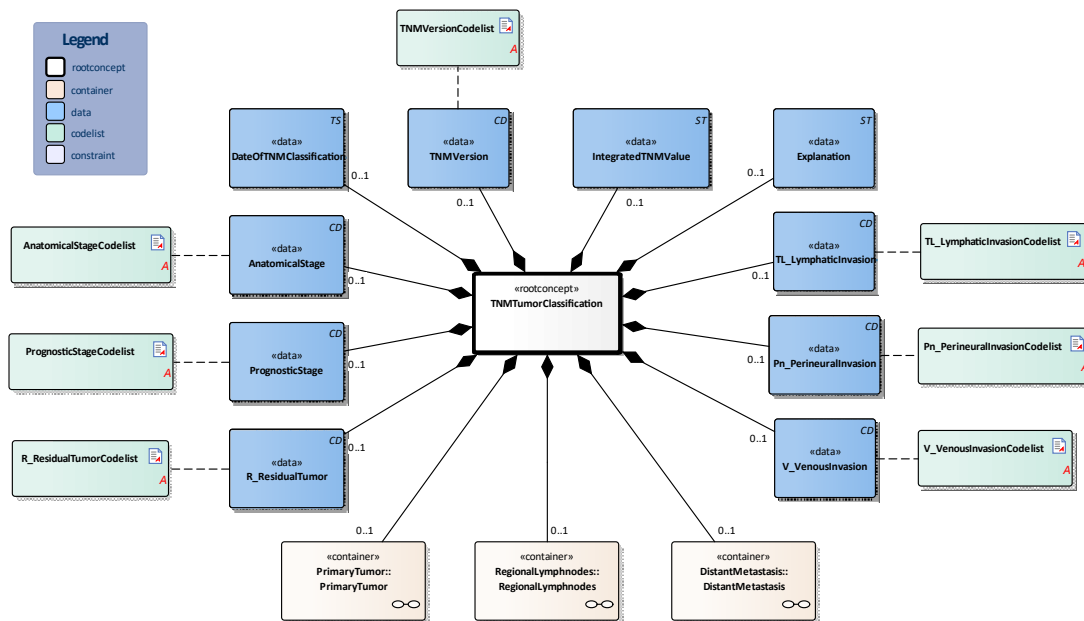
The TNM classification is a unified standard. It goes beyond clinician practice and constitutes vital information for policy-makers developing or implementing cancer control and prevention plans.

## 1.5 Patient Population

Adult patients with a solid tumor on which the TNM-classifications can be applied.

## 1.6 Evidence Base

## 1.7 Information Model



«rootconcept»	TNMTumorClassification	
<b>Definitive</b>	Root concept of the TNMTumorClassification information model. This root concept contains all data elements of the TNMTumorClassification information model.	
<b>Datatype</b>		
<b>DCM::ConceptId</b>	NL-CM:4.27.1	
<b>DCM::DefinitionCode</b>	SNOMED CT: 385379008	
	TNM tumor staging finding	
<b>Opties</b>		

«data»	DateOfTNMClassification	
Definitie	The date at which the TNM Classification (the value) has been assigned.	
Datatype		
DCM::ConceptId	NL-CM:4.27.2	
DCM::ExampleValue	07-06-2020	
Opties		

«data»	TNMVersion	
Definitie	TNM classification version (AJCC or UICC) and edition used (7th, 8th etc.).	
Datatype		
DCM::ConceptId	NL-CM:4.27.3	
DCM::DefinitionCode	SNOMED CT: 273249006 Assessment scales	
DCM::ExampleValue	AJCC 8th	
DCM::ValueSet	TNMVersionCodelist	OID: 2.16.840.1.113883.2.4.3.11.60.40.2.4.27.6
Opties		

«data»	IntegratedTNMValue	
Definitie	The assigned TNM classification (the value), based on each T, N and M category (optional incl. multiple primary tumors (m) and/or the localization of M).	
Datatype		
DCM::ConceptId	NL-CM:4.27.4	
DCM::DefinitionCode	SNOMED CT: 399703000 Integrated TNM category	
DCM::ExampleValue	pT1N0M0	
Opties		

«data»	Explanation	
Definitie	Comments regarding interpretation of the TNMTumorClassification.	
Datatype		
DCM::ConceptId	NL-CM:4.27.5	
DCM::DefinitionCode	SNOMED CT: 243814003 Interpretation of findings	
DCM::ExampleValue	hoger stadium vanwege positieve lymfeklieren pelvis	
Opties		

«data»	TL_LymphaticInvasion	
Definitie	Presence or absence of tissue invasion absence of lymphatic invasion, the L-category. It concerns an additional description within the TNM classification that is determined by a pathologist.	
Datatype		
DCM::ConceptId	NL-CM:4.27.6	
DCM::DefinitionCode	SNOMED CT: 395715009 Status of lymphatic (small vessel) invasion by tumor	
DCM::ExampleValue	L0	
DCM::ValueSet	TL_LymphaticInvasionCodelist	OID: 2.16.840.1.113883.2.4.3.11.60.40.2.4.27.2
Opties		

«data»		Pn_PerineuralInvasion	
Definitie	Presence or absence of perineural invasion, the Pn-category. It concerns an additional description within the TNM classification that is determined by a pathologist.		
Datatype			
DCM::ConceptId	NL-CM:4.27.7		
DCM::DefinitionCode	SNOMED CT: 371513001 Status of perineural invasion by tumor		
DCM::ValueSet	Pn_PerineuralInvasionCodeList	OID:	2.16.840.1.113883.2.4.3.11.60.40.2.4.27.3
Opties			

«data»		V_VenousInvasion	
Definitie	Presence or absence of venous invasion, the V-category. It concerns an additional description within the TNM classification that is determined by a pathologist.		
Datatype			
DCM::ConceptId	NL-CM:4.27.8		
DCM::DefinitionCode	SNOMED CT: 371493002 Status of venous (large vessel) invasion by tumor		
DCM::ValueSet	V_VenousInvasionCodeList	OID:	2.16.840.1.113883.2.4.3.11.60.40.2.4.27.7
Opties			

«data»		AnatomicalStage	
Definitie	The stage of the disease is the grouping based on the anatomical extent of the disease.		
Datatype			
DCM::ConceptId	NL-CM:4.27.9		
DCM::DefinitionCode	SNOMED CT: 399390009 TNM stage grouping		
DCM::ValueSet	AnatomicalStageCodeList	OID:	2.16.840.1.113883.2.4.3.11.60.40.2.4.27.1
Opties			

«data»		PrognosticStage	
Definitie	The Prognostic Stage group of the disease. Next to the anatomic extent of the disease additional prognostic factors are included in the grouping.		
Datatype			
DCM::ConceptId	NL-CM:4.27.10		
DCM::DefinitionCode	SNOMED CT: 399390009 TNM stage grouping		
DCM::ValueSet	PrognosticStageCodeList	OID:	2.16.840.1.113883.2.4.3.11.60.40.2.4.27.4
Opties			

«data»		R_ResidualTumor	
Definitie	Presence or absence of Residual Tumor after treatment, the R-category.  <i>This may relate to the primary tumor and its local or regional spread, but may also include distant metastases. The specific usage should be indicated by the user in the comment field.</i>		
Datatype			

<b>DCM::ConceptId</b>	NL-CM:4.27.11	
<b>DCM::DefinitionCode</b>	SNOMED CT: 17964000 Residual tumor stage	
<b>DCM::ValueSet</b>	R_ResidualTumorCodelist	OID: 2.16.840.1.113883.2.4.3.11.60.40.2.4.27.5
<b>Opties</b>		

<b>«document»</b>	<b>AnatomicalStageCodelist</b>	
<b>Definitie</b>		
<b>Datatype</b>		
<b>DCM::ValueSetBinding</b>	Extensible	
<b>DCM::ValueSetId</b>	2.16.840.1.113883.2.4.3.11.60.40.2.4.27.1	
<b>HCIM::ValueSetLanguage</b>	--	
<b>Opties</b>		

<b>AnatomischStadiumCodelijst</b>	<b>OID: 2.16.840.1.113883.2.4.3.11.60.40.2.4.27.1</b>
-----------------------------------	---

<b>Concept Name</b>	<b>Concept Code</b>	<b>Coding System Name</b>	<b>Coding System OID</b>	<b>Description</b>
Stadium 0	Stage0	AnatomischStadium	2.16.840.1.113883.2.4.3.11.60.40.4.10.6	Stadium 0
Stadium I	StageI	AnatomischStadium	2.16.840.1.113883.2.4.3.11.60.40.4.10.6	Stadium I
Stadium IA	StageIA	AnatomischStadium	2.16.840.1.113883.2.4.3.11.60.40.4.10.6	Stadium IA
Stadium IA1	StageIA1	AnatomischStadium	2.16.840.1.113883.2.4.3.11.60.40.4.10.6	Stadium IA1
Stadium IA2	StageIA2	AnatomischStadium	2.16.840.1.113883.2.4.3.11.60.40.4.10.6	Stadium IA2
Stadium IA3	StageIA3	AnatomischStadium	2.16.840.1.113883.2.4.3.11.60.40.4.10.6	Stadium IA3
Stadium IC	StageIC	AnatomischStadium	2.16.840.1.113883.2.4.3.11.60.40.4.10.6	Stadium IC
Stadium IB	StageIB	AnatomischStadium	2.16.840.1.113883.2.4.3.11.60.40.4.10.6	Stadium IB
Stadium IB1	StageIB1	AnatomischStadium	2.16.840.1.113883.2.4.3.11.60.40.4.10.6	Stadium IB1
Stadium IB2	StageIB2	AnatomischStadium	2.16.840.1.113883.2.4.3.11.60.40.4.10.6	Stadium IB2
Stadium IS	StageIS	AnatomischStadium	2.16.840.1.113883.2.4.3.11.60.40.4.10.6	Stadium IS
Stadium II	StageII	AnatomischStadium	2.16.840.1.113883.2.4.3.11.60.40.4.10.6	Stadium II
Stadium IIA	StageIIA	AnatomischStadium	2.16.840.1.113883.2.4.3.11.60.40.4.10.6	Stadium IIA
Stadium IIA1	StageIIA1	AnatomischStadium	2.16.840.1.113883.2.4.3.11.60.40.4.10.6	Stadium IIA1
Stadium IIA2	StageIIA2	AnatomischStadium	2.16.840.1.113883.2.4.3.11.60.40.4.10.6	Stadium IIA2
Stadium IIB	StageIIB	AnatomischStadium	2.16.840.1.113883.2.4.3.11.60.40.4.10.6	Stadium IIB
Stadium IIC	StageIIC	AnatomischStadium	2.16.840.1.113883.2.4.3.11.60.40.4.10.6	Stadium IIC
Stadium III	StageIII	AnatomischStadium	2.16.840.1.113883.2.4.3.11.60.40.4.10.6	Stadium III
Stadium IIIA	StageIIIA	AnatomischStadium	2.16.840.1.113883.2.4.3.11.60.40.4.10.6	Stadium IIIA
Stadium IIIA1	StageIIIA1	AnatomischStadium	2.16.840.1.113883.2.4.3.11.60.40.4.10.6	Stadium IIIA1
Stadium IIIA2	StageIIIA2	AnatomischStadium	2.16.840.1.113883.2.4.3.11.60.40.4.10.6	Stadium IIIA2

Stadium IIIB	StageIIIB	AnatomischStadium	2.16.840.1.113883.2.4.3.11.60.40.4.10.6	Stadium IIIB
Stadium IIIC	StageIIIC	AnatomischStadium	2.16.840.1.113883.2.4.3.11.60.40.4.10.6	Stadium IIIC
Stadium IIIC1	StageIIIC1	AnatomischStadium	2.16.840.1.113883.2.4.3.11.60.40.4.10.6	Stadium IIIC1
Stadium IIIC2	StageIIIC2	AnatomischStadium	2.16.840.1.113883.2.4.3.11.60.40.4.10.6	Stadium IIIC2
Stadium IIID	StageIID	AnatomischStadium	2.16.840.1.113883.2.4.3.11.60.40.4.10.6	Stadium IIID
Stadium IV	StageIV	AnatomischStadium	2.16.840.1.113883.2.4.3.11.60.40.4.10.6	Stadium IV
Stadium IVA	StageIVA	AnatomischStadium	2.16.840.1.113883.2.4.3.11.60.40.4.10.6	Stadium IVA
Stadium IVB	StageIVB	AnatomischStadium	2.16.840.1.113883.2.4.3.11.60.40.4.10.6	Stadium IVB
Stadium IVC	StageIVC	AnatomischStadium	2.16.840.1.113883.2.4.3.11.60.40.4.10.6	Stadium IVC

«document»		Pn_PerineuralInvasionCodelist	
Definitie			
Datatype			
DCM::ValueSetBinding	Extensible		
DCM::ValueSetId	2.16.840.1.113883.2.4.3.11.60.40.2.4.27.3		
HCIM::ValueSetLanguage	--		
Opties			

Pn_PerineuraleInvasieCodelijst			OID: 2.16.840.1.113883.2.4.3.11.60.40.2.4.27.3	
Concept Name	Concept Code	Coding System Name	Coding System OID	Description
PnX	PnX	Pn_PerineuraleInvasie	2.16.840.1.113883.2.4.3.11.60.40.4.10.13	Aanwezigheid van Perineurale invasie kan niet beoordeeld worden
Pn0	Pn0	Pn_PerineuraleInvasie	2.16.840.1.113883.2.4.3.11.60.40.4.10.13	Geen Perineurale invasie
Pn1	Pn1	Pn_PerineuraleInvasie	2.16.840.1.113883.2.4.3.11.60.40.4.10.13	Perineurale invasie

«document»		PrognosticStageCodelist	
Definitie			
Datatype			
DCM::ValueSetBinding	Extensible		
DCM::ValueSetId	2.16.840.1.113883.2.4.3.11.60.40.2.4.27.4		
HCIM::ValueSetLanguage	--		
Opties			

PrognostischStadiumCodelijst			OID: 2.16.840.1.113883.2.4.3.11.60.40.2.4.27.4	
Concept Name	Concept Code	Coding Syst. Name	Coding System OID	Description
Stadium 0	Stage0	PrognostischStadium	2.16.840.1.113883.2.4.3.11.60.40.4.10.7	Stadium 0



Stadium I	StageI	PrognostischStadium	2.16.840.1.113883.2.4.3.11.60.40.4.10.7	Stadium I
Stadium IA	StageIA	PrognostischStadium	2.16.840.1.113883.2.4.3.11.60.40.4.10.7	Stadium IA
Stadium IA1	StageIA1	PrognostischStadium	2.16.840.1.113883.2.4.3.11.60.40.4.10.7	Stadium IA1
Stadium IA2	StageIA2	PrognostischStadium	2.16.840.1.113883.2.4.3.11.60.40.4.10.7	Stadium IA2
Stadium IA3	StageIA3	PrognostischStadium	2.16.840.1.113883.2.4.3.11.60.40.4.10.7	Stadium IA3
Stadium IC	StageIC	PrognostischStadium	2.16.840.1.113883.2.4.3.11.60.40.4.10.7	Stadium IC
Stadium IB	StageIB	PrognostischStadium	2.16.840.1.113883.2.4.3.11.60.40.4.10.7	Stadium IB
Stadium IB1	StageIB1	PrognostischStadium	2.16.840.1.113883.2.4.3.11.60.40.4.10.7	Stadium IB1
Stadium IB2	StageIB2	PrognostischStadium	2.16.840.1.113883.2.4.3.11.60.40.4.10.7	Stadium IB2
Stadium IS	StageIS	PrognostischStadium	2.16.840.1.113883.2.4.3.11.60.40.4.10.7	Stadium IS
Stadium II	StageII	PrognostischStadium	2.16.840.1.113883.2.4.3.11.60.40.4.10.7	Stadium II
Stadium IIA	StageIIA	PrognostischStadium	2.16.840.1.113883.2.4.3.11.60.40.4.10.7	Stadium IIA
Stadium IIA1	StageIIA1	PrognostischStadium	2.16.840.1.113883.2.4.3.11.60.40.4.10.7	Stadium IIA1
Stadium IIA2	StageIIA2	PrognostischStadium	2.16.840.1.113883.2.4.3.11.60.40.4.10.7	Stadium IIA2
Stadium IIB	StageIIB	PrognostischStadium	2.16.840.1.113883.2.4.3.11.60.40.4.10.7	Stadium IIB
Stadium IIC	StageIIC	PrognostischStadium	2.16.840.1.113883.2.4.3.11.60.40.4.10.7	Stadium IIC
Stadium III	StageIII	PrognostischStadium	2.16.840.1.113883.2.4.3.11.60.40.4.10.7	Stadium III
Stadium IIIA	StageIIIA	PrognostischStadium	2.16.840.1.113883.2.4.3.11.60.40.4.10.7	Stadium IIIA
Stadium IIIA1	StageIIIA1	PrognostischStadium	2.16.840.1.113883.2.4.3.11.60.40.4.10.7	Stadium IIIA1
Stadium IIIA2	StageIIIA2	PrognostischStadium	2.16.840.1.113883.2.4.3.11.60.40.4.10.7	Stadium IIIA2
Stadium IIIB	StageIIIB	PrognostischStadium	2.16.840.1.113883.2.4.3.11.60.40.4.10.7	Stadium IIIB
Stadium IIIC	StageIIIC	PrognostischStadium	2.16.840.1.113883.2.4.3.11.60.40.4.10.7	Stadium IIIC
Stadium IIIC1	StageIIIC1	PrognostischStadium	2.16.840.1.113883.2.4.3.11.60.40.4.10.7	Stadium IIIC1
Stadium IIIC2	StageIIIC2	PrognostischStadium	2.16.840.1.113883.2.4.3.11.60.40.4.10.7	Stadium IIIC2
Stadium IIID	StageIIID	PrognostischStadium	2.16.840.1.113883.2.4.3.11.60.40.4.10.7	Stadium IIID
Stadium IV	StageIV	PrognostischStadium	2.16.840.1.113883.2.4.3.11.60.40.4.10.7	Stadium IV
Stadium IVA	StageIVA	PrognostischStadium	2.16.840.1.113883.2.4.3.11.60.40.4.10.7	Stadium IVA
Stadium IVB	StageIVB	PrognostischStadium	2.16.840.1.113883.2.4.3.11.60.40.4.10.7	Stadium IVB
Stadium IVC	StageIVC	PrognostischStadium	2.16.840.1.113883.2.4.3.11.60.40.4.10.7	Stadium IVC
I: 0	I:0	PrognostischStadium	2.16.840.1.113883.2.4.3.11.60.40.4.10.7	I:0
I: 1	I:1	PrognostischStadium	2.16.840.1.113883.2.4.3.11.60.40.4.10.7	I:1
I: 2	I:2	PrognostischStadium	2.16.840.1.113883.2.4.3.11.60.40.4.10.7	I:2
I: 3	I:3	PrognostischStadium	2.16.840.1.113883.2.4.3.11.60.40.4.10.7	I:3
I: 4	I:4	PrognostischStadium	2.16.840.1.113883.2.4.3.11.60.40.4.10.7	I:4
I: 5	I:5	PrognostischStadium	2.16.840.1.113883.2.4.3.11.60.40.4.10.7	I:5
I: 6	I:6	PrognostischStadium	2.16.840.1.113883.2.4.3.11.60.40.4.10.7	I:6
I: 7	I:7	PrognostischStadium	2.16.840.1.113883.2.4.3.11.60.40.4.10.7	I:7
I: 8	I:8	PrognostischStadium	2.16.840.1.113883.2.4.3.11.60.40.4.10.7	I:8
I: 9	I:9	PrognostischStadium	2.16.840.1.113883.2.4.3.11.60.40.4.10.7	I:9
I: 10	I:10	PrognostischStadium	2.16.840.1.113883.2.4.3.11.60.40.4.10.7	I:10
I: 11	I:11	PrognostischStadium	2.16.840.1.113883.2.4.3.11.60.40.4.10.7	I:11
I: 12	I:12	PrognostischStadium	2.16.840.1.113883.2.4.3.11.60.40.4.10.7	I:12
I: 13	I:13	PrognostischStadium	2.16.840.1.113883.2.4.3.11.60.40.4.10.7	I:13
I: 14	I:14	PrognostischStadium	2.16.840.1.113883.2.4.3.11.60.40.4.10.7	I:14
I: 15	I:15	PrognostischStadium	2.16.840.1.113883.2.4.3.11.60.40.4.10.7	I:15
I: 16	I:16	PrognostischStadium	2.16.840.1.113883.2.4.3.11.60.40.4.10.7	I:16
I: 17	I:17	PrognostischStadium	2.16.840.1.113883.2.4.3.11.60.40.4.10.7	I:17
I: 18	I:18	PrognostischStadium	2.16.840.1.113883.2.4.3.11.60.40.4.10.7	I:18
I: 19	I:19	PrognostischStadium	2.16.840.1.113883.2.4.3.11.60.40.4.10.7	I:19
I: 20	I:20	PrognostischStadium	2.16.840.1.113883.2.4.3.11.60.40.4.10.7	I:20
I: 21	I:21	PrognostischStadium	2.16.840.1.113883.2.4.3.11.60.40.4.10.7	I:21
I: 22	I:22	PrognostischStadium	2.16.840.1.113883.2.4.3.11.60.40.4.10.7	I:22
I: 23	I:23	PrognostischStadium	2.16.840.1.113883.2.4.3.11.60.40.4.10.7	I:23
I: 24	I:24	PrognostischStadium	2.16.840.1.113883.2.4.3.11.60.40.4.10.7	I:24
I: 25	I:25	PrognostischStadium	2.16.840.1.113883.2.4.3.11.60.40.4.10.7	I:25

II: 0	II:0	PrognostischStadium	2.16.840.1.113883.2.4.3.11.60.40.4.10.7	II:0
II: 1	II:1	PrognostischStadium	2.16.840.1.113883.2.4.3.11.60.40.4.10.7	II:1
II: 2	II:2	PrognostischStadium	2.16.840.1.113883.2.4.3.11.60.40.4.10.7	II:2
II: 3	II:3	PrognostischStadium	2.16.840.1.113883.2.4.3.11.60.40.4.10.7	II:3
II: 4	II:4	PrognostischStadium	2.16.840.1.113883.2.4.3.11.60.40.4.10.7	II:4
II: 5	II:5	PrognostischStadium	2.16.840.1.113883.2.4.3.11.60.40.4.10.7	II:5
II: 6	II:6	PrognostischStadium	2.16.840.1.113883.2.4.3.11.60.40.4.10.7	II:6
II: 7	II:7	PrognostischStadium	2.16.840.1.113883.2.4.3.11.60.40.4.10.7	II:7
II: 8	II:8	PrognostischStadium	2.16.840.1.113883.2.4.3.11.60.40.4.10.7	II:8
II: 9	II:9	PrognostischStadium	2.16.840.1.113883.2.4.3.11.60.40.4.10.7	II:9
II: 10	II:10	PrognostischStadium	2.16.840.1.113883.2.4.3.11.60.40.4.10.7	II:10
II: 11	II:11	PrognostischStadium	2.16.840.1.113883.2.4.3.11.60.40.4.10.7	II:11
II: 12	II:12	PrognostischStadium	2.16.840.1.113883.2.4.3.11.60.40.4.10.7	II:12
II: 13	II:13	PrognostischStadium	2.16.840.1.113883.2.4.3.11.60.40.4.10.7	II:13
II: 14	II:14	PrognostischStadium	2.16.840.1.113883.2.4.3.11.60.40.4.10.7	II:14
II: 15	II:15	PrognostischStadium	2.16.840.1.113883.2.4.3.11.60.40.4.10.7	II:15
II: 16	II:16	PrognostischStadium	2.16.840.1.113883.2.4.3.11.60.40.4.10.7	II:16
II: 17	II:17	PrognostischStadium	2.16.840.1.113883.2.4.3.11.60.40.4.10.7	II:17
II: 18	II:18	PrognostischStadium	2.16.840.1.113883.2.4.3.11.60.40.4.10.7	II:18
II: 19	II:19	PrognostischStadium	2.16.840.1.113883.2.4.3.11.60.40.4.10.7	II:19
II: 20	II:20	PrognostischStadium	2.16.840.1.113883.2.4.3.11.60.40.4.10.7	II:20
II: 21	II:21	PrognostischStadium	2.16.840.1.113883.2.4.3.11.60.40.4.10.7	II:21
II: 22	II:22	PrognostischStadium	2.16.840.1.113883.2.4.3.11.60.40.4.10.7	II:22
II: 23	II:23	PrognostischStadium	2.16.840.1.113883.2.4.3.11.60.40.4.10.7	II:23
II: 24	II:24	PrognostischStadium	2.16.840.1.113883.2.4.3.11.60.40.4.10.7	II:24
II: 25	II:25	PrognostischStadium	2.16.840.1.113883.2.4.3.11.60.40.4.10.7	II:25
III: 0	III:0	PrognostischStadium	2.16.840.1.113883.2.4.3.11.60.40.4.10.7	III:0
III: 1	III:1	PrognostischStadium	2.16.840.1.113883.2.4.3.11.60.40.4.10.7	III:1
III: 2	III:2	PrognostischStadium	2.16.840.1.113883.2.4.3.11.60.40.4.10.7	III:2
III: 3	III:3	PrognostischStadium	2.16.840.1.113883.2.4.3.11.60.40.4.10.7	III:3
III: 4	III:4	PrognostischStadium	2.16.840.1.113883.2.4.3.11.60.40.4.10.7	III:4
III: 5	III:5	PrognostischStadium	2.16.840.1.113883.2.4.3.11.60.40.4.10.7	III:5
III: 6	III:6	PrognostischStadium	2.16.840.1.113883.2.4.3.11.60.40.4.10.7	III:6
III: 7	III:7	PrognostischStadium	2.16.840.1.113883.2.4.3.11.60.40.4.10.7	III:7
III: 8	III:8	PrognostischStadium	2.16.840.1.113883.2.4.3.11.60.40.4.10.7	III:8
III: 9	III:9	PrognostischStadium	2.16.840.1.113883.2.4.3.11.60.40.4.10.7	III:9
III: 10	III:10	PrognostischStadium	2.16.840.1.113883.2.4.3.11.60.40.4.10.7	III:10
III: 11	III:11	PrognostischStadium	2.16.840.1.113883.2.4.3.11.60.40.4.10.7	III:11
III: 12	III:12	PrognostischStadium	2.16.840.1.113883.2.4.3.11.60.40.4.10.7	III:12
III: 13	III:13	PrognostischStadium	2.16.840.1.113883.2.4.3.11.60.40.4.10.7	III:13
III: 14	III:14	PrognostischStadium	2.16.840.1.113883.2.4.3.11.60.40.4.10.7	III:14
III: 15	III:15	PrognostischStadium	2.16.840.1.113883.2.4.3.11.60.40.4.10.7	III:15
III: 16	III:16	PrognostischStadium	2.16.840.1.113883.2.4.3.11.60.40.4.10.7	III:16
III: 17	III:17	PrognostischStadium	2.16.840.1.113883.2.4.3.11.60.40.4.10.7	III:17
III: 18	III:18	PrognostischStadium	2.16.840.1.113883.2.4.3.11.60.40.4.10.7	III:18
III: 19	III:19	PrognostischStadium	2.16.840.1.113883.2.4.3.11.60.40.4.10.7	III:19
III: 20	III:20	PrognostischStadium	2.16.840.1.113883.2.4.3.11.60.40.4.10.7	III:20
III: 21	III:21	PrognostischStadium	2.16.840.1.113883.2.4.3.11.60.40.4.10.7	III:21
III: 22	III:22	PrognostischStadium	2.16.840.1.113883.2.4.3.11.60.40.4.10.7	III:22
III: 23	III:23	PrognostischStadium	2.16.840.1.113883.2.4.3.11.60.40.4.10.7	III:23
III: 24	III:24	PrognostischStadium	2.16.840.1.113883.2.4.3.11.60.40.4.10.7	III:24
III: 25	III:25	PrognostischStadium	2.16.840.1.113883.2.4.3.11.60.40.4.10.7	III:25
IV: 0	IV:0	PrognostischStadium	2.16.840.1.113883.2.4.3.11.60.40.4.10.7	IV:0
IV: 1	IV:1	PrognostischStadium	2.16.840.1.113883.2.4.3.11.60.40.4.10.7	IV:1
IV: 2	IV:2	PrognostischStadium	2.16.840.1.113883.2.4.3.11.60.40.4.10.7	IV:2

IV: 3	IV:3	PrognostischStadium	2.16.840.1.113883.2.4.3.11.60.40.4.10.7	IV:3
IV: 4	IV:4	PrognostischStadium	2.16.840.1.113883.2.4.3.11.60.40.4.10.7	IV:4
IV: 5	IV:5	PrognostischStadium	2.16.840.1.113883.2.4.3.11.60.40.4.10.7	IV:5
IV: 6	IV:6	PrognostischStadium	2.16.840.1.113883.2.4.3.11.60.40.4.10.7	IV:6
IV: 7	IV:7	PrognostischStadium	2.16.840.1.113883.2.4.3.11.60.40.4.10.7	IV:7
IV: 8	IV:8	PrognostischStadium	2.16.840.1.113883.2.4.3.11.60.40.4.10.7	IV:8
IV: 9	IV:9	PrognostischStadium	2.16.840.1.113883.2.4.3.11.60.40.4.10.7	IV:9
IV: 10	IV:10	PrognostischStadium	2.16.840.1.113883.2.4.3.11.60.40.4.10.7	IV:10
IV: 11	IV:11	PrognostischStadium	2.16.840.1.113883.2.4.3.11.60.40.4.10.7	IV:11
IV: 12	IV:12	PrognostischStadium	2.16.840.1.113883.2.4.3.11.60.40.4.10.7	IV:12
IV: 13	IV:13	PrognostischStadium	2.16.840.1.113883.2.4.3.11.60.40.4.10.7	IV:13
IV: 14	IV:14	PrognostischStadium	2.16.840.1.113883.2.4.3.11.60.40.4.10.7	IV:14
IV: 15	IV:15	PrognostischStadium	2.16.840.1.113883.2.4.3.11.60.40.4.10.7	IV:15
IV: 16	IV:16	PrognostischStadium	2.16.840.1.113883.2.4.3.11.60.40.4.10.7	IV:16
IV: 17	IV:17	PrognostischStadium	2.16.840.1.113883.2.4.3.11.60.40.4.10.7	IV:17
IV: 18	IV:18	PrognostischStadium	2.16.840.1.113883.2.4.3.11.60.40.4.10.7	IV:18
IV: 19	IV:19	PrognostischStadium	2.16.840.1.113883.2.4.3.11.60.40.4.10.7	IV:19
IV: 20	IV:20	PrognostischStadium	2.16.840.1.113883.2.4.3.11.60.40.4.10.7	IV:20
IV: 21	IV:21	PrognostischStadium	2.16.840.1.113883.2.4.3.11.60.40.4.10.7	IV:21
IV: 22	IV:22	PrognostischStadium	2.16.840.1.113883.2.4.3.11.60.40.4.10.7	IV:22
IV: 23	IV:23	PrognostischStadium	2.16.840.1.113883.2.4.3.11.60.40.4.10.7	IV:23
IV: 24	IV:24	PrognostischStadium	2.16.840.1.113883.2.4.3.11.60.40.4.10.7	IV:24
IV: 25	IV:25	PrognostischStadium	2.16.840.1.113883.2.4.3.11.60.40.4.10.7	IV:25

<b>«document»</b>	<b>R_ResidualTumorCodelist</b>		
<b>Definitie</b>			
<b>Datatype</b>			
<b>DCM::ValueSetBinding</b>	Extensible		
<b>DCM::ValueSetId</b>	2.16.840.1.113883.2.4.3.11.60.40.2.4.27.5		
<b>HCIM::ValueSetLanguage</b>	--		
<b>Opties</b>			

<b>R_ResidueleTumorCodelijst</b>		<b>OID: 2.16.840.1.113883.2.4.3.11.60.40.2.4.27.5</b>		
<b>Concept Name</b>	<b>Concept Code</b>	<b>Coding System Name</b>	<b>Coding System OID</b>	<b>Description</b>
RX	RX	R_ResidueleTumor	2.16.840.1.113883.2.4.3.11.60.40.4.10.4	Aanwezigheid van residuele tumor kan niet beoordeeld worden
R0	R0	R_ResidueleTumor	2.16.840.1.113883.2.4.3.11.60.40.4.10.4	Geen residuele tumor
R1	R1	R_ResidueleTumor	2.16.840.1.113883.2.4.3.11.60.40.4.10.4	Microscopische residuele tumor
R2	R2	R_ResidueleTumor	2.16.840.1.113883.2.4.3.11.60.40.4.10.4	Macroscopische residuele tumor

<b>«document»</b>	<b>TL_LymphaticInvasionCodelist</b>		
<b>Definitie</b>			
<b>Datatype</b>			
<b>DCM::ValueSetBinding</b>	Extensible		
<b>DCM::ValueSetId</b>	2.16.840.1.113883.2.4.3.11.60.40.2.4.27.2		

<b>HCIM::ValueSetLanguage</b>	--	
<b>Opties</b>		

L_LymfatischeInvasieCodelijst			OID: 2.16.840.1.113883.2.4.3.11.60.40.2.4.27.2	
Concept Name	Concept Code	Coding System Name	Coding System OID	Description
LX	LX	L_LymfatischeInvasie	2.16.840.1.113883.2.4.3.11.60.40.4.10.9	Aanwezigheid van Lymfatische invasie kan niet beoordeeld worden
L0	L0	L_LymfatischeInvasie	2.16.840.1.113883.2.4.3.11.60.40.4.10.9	Geen Lymfatische invasie
L1	L1	L_LymfatischeInvasie	2.16.840.1.113883.2.4.3.11.60.40.4.10.9	Lymfatische invasie

«document»	TNMVersionCodelist	
<b>Definitie</b>		
<b>Datatype</b>		
<b>DCM::ValueSetBinding</b>	Extensible	
<b>DCM::ValueSetId</b>	2.16.840.1.113883.2.4.3.11.60.40.2.4.27.6	
<b>HCIM::ValueSetLanguage</b>	--	
<b>Opties</b>		

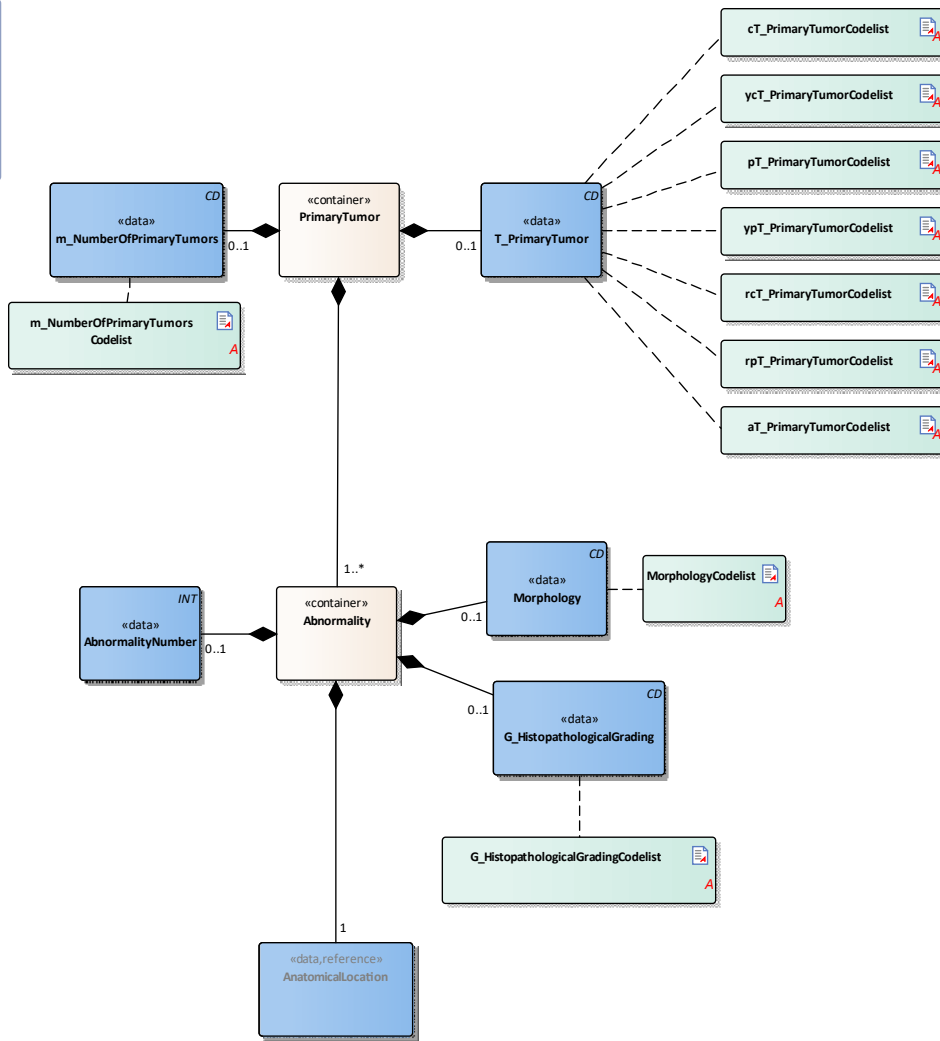
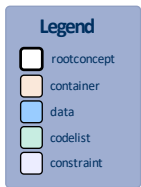
TNMVersieCodelijst			OID: 2.16.840.1.113883.2.4.3.11.60.40.2.4.27.6	
Concept Name	Concept Code	Coding System Name	Coding System OID	Description
AJCC 1ste editie	AJCC1	TNMVersie	2.16.840.1.113883.2.4.3.11.60.40.4.10.8	AJCC TNM 1ste editie
AJCC 2e editie	AJCC2	TNMVersie	2.16.840.1.113883.2.4.3.11.60.40.4.10.8	AJCC TNM 2e editie
AJCC 3e editie	AJCC3	TNMVersie	2.16.840.1.113883.2.4.3.11.60.40.4.10.8	AJCC TNM 3e editie
AJCC 4e editie	AJCC4	TNMVersie	2.16.840.1.113883.2.4.3.11.60.40.4.10.8	AJCC TNM 4e editie
AJCC 5e editie	AJCC5	TNMVersie	2.16.840.1.113883.2.4.3.11.60.40.4.10.8	AJCC TNM 5e editie
AJCC 6e editie	AJCC6	TNMVersie	2.16.840.1.113883.2.4.3.11.60.40.4.10.8	AJCC TNM 6e editie
AJCC 7e editie	AJCC7	TNMVersie	2.16.840.1.113883.2.4.3.11.60.40.4.10.8	AJCC TNM 7e editie
AJCC 8e editie	AJCC8	TNMVersie	2.16.840.1.113883.2.4.3.11.60.40.4.10.8	AJCC TNM 8e editie
AJCC 9e editie	AJCC9	TNMVersie	2.16.840.1.113883.2.4.3.11.60.40.4.10.8	AJCC TNM 9e editie
UICC 1ste editie	UICC1	TNMVersie	2.16.840.1.113883.2.4.3.11.60.40.4.10.8	UICC TNM 1ste editie
UICC 2e editie	UICC2	TNMVersie	2.16.840.1.113883.2.4.3.11.60.40.4.10.8	UICC TNM 2e editie
UICC 3e editie	UICC3	TNMVersie	2.16.840.1.113883.2.4.3.11.60.40.4.10.8	UICC TNM 3e editie
UICC 4e editie	UICC4	TNMVersie	2.16.840.1.113883.2.4.3.11.60.40.4.10.8	UICC TNM 4e editie
UICC 5e editie	UICC5	TNMVersie	2.16.840.1.113883.2.4.3.11.60.40.4.10.8	UICC TNM 5e editie
UICC 6e editie	UICC6	TNMVersie	2.16.840.1.113883.2.4.3.11.60.40.4.10.8	UICC TNM 6e editie
UICC 7e editie	UICC7	TNMVersie	2.16.840.1.113883.2.4.3.11.60.40.4.10.8	UICC TNM 7e editie

UICC 8e editie	UICCTNM8	TNMVersie	2.16.840.1.113883.2.4.3.11.60.40.4.10.8	UICC TNM 8e editie
----------------	----------	-----------	---	--------------------

«document»		V_VenousInvasionCodelist		
<b>Definitie</b>				
<b>Datatype</b>				
<b>DCM::ValueSetBinding</b>	Extensible			
<b>DCM::ValueSetId</b>	2.16.840.1.113883.2.4.3.11.60.40.2.4.27.7			
<b>HCIM::ValueSetLanguage</b>	--			
<b>Opties</b>				
<b>V_VeneuzeInvasieCodelist</b>		<b>OID: 2.16.840.1.113883.2.4.3.11.60.40.2.4.27.7</b>		
Concept Name	Concept Code	Coding System Name	Coding System OID	Description
VX	VX	V_VeneuzeInvasie	2.16.840.1.113883.2.4.3.11.60.40.4.10.14	Aanwezigheid van veneuze invasie kan niet beoordeeld worden
V0	V0	V_VeneuzeInvasie	2.16.840.1.113883.2.4.3.11.60.40.4.10.14	Geen veneuze invasie
V1	V1	V_VeneuzeInvasie	2.16.840.1.113883.2.4.3.11.60.40.4.10.14	Microscopische veneuze invasie
V2	V2	V_VeneuzeInvasie	2.16.840.1.113883.2.4.3.11.60.40.4.10.14	Macroscopische veneuze invasie

Legend	
<b>Definitie</b>	
<b>Datatype</b>	
<b>Opties</b>	

### 1.7.1 PrimaryTumor



«container»	PrimaryTumor	
<b>Definitie</b>	Container of the PrimaryTumor concept. This container contains all data elements of the PrimaryTumor concept.	
<b>Datatype</b>		
<b>DCM::ConceptId</b>	NL-CM:4.27.12	
<b>DCM::DefinitionCode</b>	SNOMED CT: 86049000 Neoplasm, malignant (primary)	
<b>Opties</b>		

«data»	m_NumberOfPrimaryTumors	
<b>Definitie</b>	The number of existing primary tumors. In the case of multiple primary tumors in one organ, the tumor with the highest T category should be classified and the multiplicity or the number of tumors should be indicated in parenthesis. If multiple primary tumors are present, this is expressed in an addition to the T category in the form of (m) or a (number), e.g. T2 (m) or T2 (2). In case of one primary tumor, m is omitted from the "IntegratedTNMValue".	
<b>Datatype</b>		
<b>DCM::ConceptId</b>	NL-CM:4.27.13	

<b>DCM::DefinitionCode</b>	SNOMED CT: 133641000146103 number of primary tumors	
<b>DCM::ValueSet</b>	m_NumberOfPrimaryTumors Codelist	OID: 2.16.840.1.113883.2.4.3.11.60.40.2.4.27.8
<b>Opties</b>		

<b>«data»</b>	<b>T_PrimaryTumor</b>	
<b>Definitie</b>	Staging result of the size extension of the primary tumor, the T-category of the TNM classification including the prefix and suffix.	
<b>Datatype</b>		
<b>DCM::ConceptId</b>	NL-CM:4.27.14	
<b>DCM::DefinitionCode</b>	SNOMED CT: 78873005 T category	
<b>DCM::ExampleValue</b>	T2	
<b>DCM::ValueSet</b>	cT_PrimaryTumorCodelist	OID: 2.16.840.1.113883.2.4.3.11.60.40.2.4.27.9
<b>DCM::ValueSet</b>	rcT_PrimaryTumorCodelist	OID: 2.16.840.1.113883.2.4.3.11.60.40.2.4.27.13
<b>DCM::ValueSet</b>	ypT_PrimaryTumorCodelist	OID: 2.16.840.1.113883.2.4.3.11.60.40.2.4.27.12
<b>DCM::ValueSet</b>	pT_PrimaryTumorCodelist	OID: 2.16.840.1.113883.2.4.3.11.60.40.2.4.27.11
<b>DCM::ValueSet</b>	aT_PrimaryTumorCodelist	OID: 2.16.840.1.113883.2.4.3.11.60.40.2.4.27.15
<b>DCM::ValueSet</b>	rpT_PrimaryTumorCodelist	OID: 2.16.840.1.113883.2.4.3.11.60.40.2.4.27.14
<b>DCM::ValueSet</b>	ycT_PrimaryTumorCodelist	OID: 2.16.840.1.113883.2.4.3.11.60.40.2.4.27.10
<b>Opties</b>		

<b>«container»</b>	<b>Abnormality</b>	
<b>Definitie</b>	Container of the Abnormality concept.This container contains all data elements of the Abnormality concept.	
<b>Datatype</b>		
<b>DCM::ConceptId</b>	NL-CM:4.27.15	
<b>DCM::DefinitionCode</b>	SNOMED CT: 108369006 Neoplasm	
<b>Opties</b>		

<b>«data»</b>	<b>AbnormalityNumber</b>	
<b>Definitie</b>	The number assigned to the abnormality, which is necessary in order to be able to clearly indicate to which abnormality the information relates in various examinations. In the case of multiple primary tumors in one organ, the tumor with the highest T category should be classified.	
<b>Datatype</b>		
<b>DCM::ConceptId</b>	NL-CM:4.27.16	
<b>Opties</b>		

<b>«data»</b>	<b>Morphology</b>	
<b>Definitie</b>	Behavior of a tumor and cell type expressed in ICD-O-3 morphological or histology code. Describes the cell type (or histology) of the tumor, together with the behavior (malignant or benign). This is determined by a pathologist.	

<b>Datatype</b>		
<b>DCM::ConceptId</b>	NL-CM:4.27.17	
<b>DCM::DefinitionCode</b>	SNOMED CT: 396984004 Histologic feature of tumor	
<b>DCM::ValueSet</b>	MorphologyCodelist	OID: 2.16.840.1.113883.2.4.3.11.60.40.2.4.27.16
<b>Opties</b>		

<b>«data»</b>	<b>G_HistopathologicalGrading</b>	
<b>Definitie</b>	Staging result of the histopathological grading, the G-category of theTNM classification. The differentiation grade of a tumor is determined by a pathologist.	
<b>Datatype</b>		
<b>DCM::ConceptId</b>	NL-CM:4.27.18	
<b>DCM::DefinitionCode</b>	SNOMED CT: 371469007 Histologic grade	
<b>DCM::ExampleValue</b>	Grade II (Moderately differentiated)	
<b>DCM::ValueSet</b>	G_HistopathologicalGrading Codelist	OID: 2.16.840.1.113883.2.4.3.11.60.40.2.4.27.17
<b>Opties</b>		

<b>«data»</b>	<b>AnatomicalLocation</b>	
<b>Definitie</b>	Contains the localization(s) of the primary tumor, which (i.a.) determines the assignment of the TNM classification to the tumor.	
<b>Datatype</b>		
<b>DCM::ConceptId</b>	NL-CM:4.27.20	
<b>DCM::DefinitionCode</b>	SNOMED CT: 399687005 Primary tumor site	
<b>DCM::ReferencedConceptId</b>	NL-CM:20.7.1	This is a reference to the rootconcept of information model AnatomicalLocation.
<b>Opties</b>		

<b>«document»</b>	<b>m_NumberOfPrimaryTumors Codelist</b>	
<b>Definitie</b>		
<b>Datatype</b>		
<b>DCM::ValueSetBinding</b>	Extensible	
<b>DCM::ValueSetId</b>	2.16.840.1.113883.2.4.3.11.60.40.2.4.27.8	
<b>HCIM::ValueSetLanguage</b>	--	
<b>Opties</b>		

<b>m_AantalPrimaireTumorenCodelijst</b>			<b>OID: 2.16.840.1.113883.2.4.3.11.60.40.2.4.27.8</b>	
Concept Name	Concept Code	Coding Syst. Name	Coding System OID	Description
(m)	(m)	m_AantalPrimaire Tumoren	2.16.840.1.113883.2.4.3.11.60.40.4.10.12	Meerdere primaire tumoren
(1)	(1)	m_AantalPrimaire Tumoren	2.16.840.1.113883.2.4.3.11.60.40.4.10.12	1 primaire tumor
(2)	(2)	m_AantalPrimaire Tumoren	2.16.840.1.113883.2.4.3.11.60.40.4.10.12	2 primaire tumoren
(3)	(3)	m_AantalPrimaire Tumoren	2.16.840.1.113883.2.4.3.11.60.40.4.10.12	3 primaire tumoren
(4)	(4)	m_AantalPrimaire Tumoren	2.16.840.1.113883.2.4.3.11.60.40.4.10.12	4 primaire tumoren
(5)	(5)	m_AantalPrimaire Tumoren	2.16.840.1.113883.2.4.3.11.60.40.4.10.12	5 primaire tumoren



		Tumoren		
(6)	(6)	m_AantalPrimaire Tumoren	2.16.840.1.113883.2.4.3.11.60.40.4.10.12	6 primaire tumoren
(7)	(7)	m_AantalPrimaire Tumoren	2.16.840.1.113883.2.4.3.11.60.40.4.10.12	7 primaire tumoren
(8)	(8)	m_AantalPrimaire Tumoren	2.16.840.1.113883.2.4.3.11.60.40.4.10.12	8 primaire tumoren
(9)	(9)	m_AantalPrimaire Tumoren	2.16.840.1.113883.2.4.3.11.60.40.4.10.12	9 primaire tumoren
(10)	(10)	m_AantalPrimaire Tumoren	2.16.840.1.113883.2.4.3.11.60.40.4.10.12	10 primaire tumoren
Other	OTH	NullFlavor	2.16.840.1.113883.5.1008	Anders

«document»		G_HistopathologicalGradingCodelist		
Definitie				
Datatype				
DCM::ValueSetBinding	Extensible			
DCM::ValueSetId	2.16.840.1.113883.2.4.3.11.60.40.2.4.27.17			
HCIM::ValueSetLanguage	--			
Opties				
G_DifferentiatiegraadTumorCodelijst		OID: 2.16.840.1.113883.2.4.3.11.60.40.2.4.27.17		
Concept Name	Concept Code	Coding System Name	Coding System OID	Description
GX	GX	G_DifferentiatiegraadTumor	2.16.840.1.113883.2.4.3.11.60.40.4.10.5	Differentiatiegraad kan niet beoordeeld worden.
G1	G1	G_DifferentiatiegraadTumor	2.16.840.1.113883.2.4.3.11.60.40.4.10.5	Goed gedifferentieerd.
G2	G2	G_DifferentiatiegraadTumor	2.16.840.1.113883.2.4.3.11.60.40.4.10.5	Matig gedifferentieerd.
G3	G3	G_DifferentiatiegraadTumor	2.16.840.1.113883.2.4.3.11.60.40.4.10.5	Slecht gedifferentieerd.
G3-4	G3-4	G_DifferentiatiegraadTumor	2.16.840.1.113883.2.4.3.11.60.40.4.10.5	Slecht gedifferentieerd of ongedifferentieerd.
G4	G4	G_DifferentiatiegraadTumor	2.16.840.1.113883.2.4.3.11.60.40.4.10.5	Ongedifferentieerd.
G5	G5	G_DifferentiatiegraadTumor	2.16.840.1.113883.2.4.3.11.60.40.4.10.5	Differentiatiegraad groep 5 (Gleason score: 9-10)
LowMitoticRate	LowMitoticRate	G_DifferentiatiegraadTumor	2.16.840.1.113883.2.4.3.11.60.40.4.10.5	Lage mitotische rato
HighMitoticRate	HighMitoticRate	G_DifferentiatiegraadTumor	2.16.840.1.113883.2.4.3.11.60.40.4.10.5	Hoge mitotische rato

«document»		MorphologyCodelist		
Definitie				
Datatype				
DCM::ValueSetBinding	Extensible			
DCM::ValueSetId	2.16.840.1.113883.2.4.3.11.60.40.2.4.27.16			
HCIM::ValueSetLanguage	--			
Opties				

MorfologieCodelijst		OID: 2.16.840.1.113883.2.4.3.11.60.40.2.4.27.16	
Codes	Coding Syst. Name	Coding System OID	
International Classification of Diseases for Oncology, version 3 (Morphology codes)	ICD-O-3	2.16.840.1.113883.6.43.1	

«document»	cT_PrimaryTumorCodelist	
<b>Definitie</b>	De primaire tumor (T) voor een klinische classificatie, gebaseerd op gegevens vóór behandeling, zoals klinisch onderzoek, beeldvorming, endoscopie, bipten, chirurgische exploratie of onderzoek onder narcose, en andere onderzoeken	
<b>Datatype</b>		
<b>DCM::ValueSetBinding</b>	Extensible	
<b>DCM::ValueSetId</b>	2.16.840.1.113883.2.4.3.11.60.40.2.4.27.9	
<b>HCIM::ValueSetLanguage</b>	--	
<b>Opties</b>		

cT_PrimaireTumorCodelijst		OID: 2.16.840.1.113883.2.4.3.11.60.40.2.4.27.9		
---------------------------	--	--	--	--

Concept Name	Concept Code	Coding System Name	Coding System OID	Description
cTx	cTx	T_PrimaireTumor	2.16.840.1.113883.2.4.3.11.60.40.4.10.10	cTx
cT0	cT0	T_PrimaireTumor	2.16.840.1.113883.2.4.3.11.60.40.4.10.10	cT0
cTa	cTa	T_PrimaireTumor	2.16.840.1.113883.2.4.3.11.60.40.4.10.10	cTa
cTis	cTis	T_PrimaireTumor	2.16.840.1.113883.2.4.3.11.60.40.4.10.10	cTis
cTis (DCIS)	cTis (DCIS)	T_PrimaireTumor	2.16.840.1.113883.2.4.3.11.60.40.4.10.10	cTis (DCIS)
cTis (LAMN)	cTis (LAMN)	T_PrimaireTumor	2.16.840.1.113883.2.4.3.11.60.40.4.10.10	cTis (LAMN)
cTis (LCIS)	cTis (LCIS)	T_PrimaireTumor	2.16.840.1.113883.2.4.3.11.60.40.4.10.10	cTis (LCIS)
cTis (Paget)	cTis (Paget)	T_PrimaireTumor	2.16.840.1.113883.2.4.3.11.60.40.4.10.10	cTis (Paget)
cTis pu	cTis pu	T_PrimaireTumor	2.16.840.1.113883.2.4.3.11.60.40.4.10.10	cTis pu
cT1	cT1	T_PrimaireTumor	2.16.840.1.113883.2.4.3.11.60.40.4.10.10	cT1
cT1mi	cT1mi	T_PrimaireTumor	2.16.840.1.113883.2.4.3.11.60.40.4.10.10	cT1mi
cT1a	cT1a	T_PrimaireTumor	2.16.840.1.113883.2.4.3.11.60.40.4.10.10	cT1a
cT1a1	cT1a1	T_PrimaireTumor	2.16.840.1.113883.2.4.3.11.60.40.4.10.10	cT1a1
cT1a2	cT1a2	T_PrimaireTumor	2.16.840.1.113883.2.4.3.11.60.40.4.10.10	cT1a2
cT1b	cT1b	T_PrimaireTumor	2.16.840.1.113883.2.4.3.11.60.40.4.10.10	cT1b
cT1b1	cT1b1	T_PrimaireTumor	2.16.840.1.113883.2.4.3.11.60.40.4.10.10	cT1b1
cT1b2	cT1b2	T_PrimaireTumor	2.16.840.1.113883.2.4.3.11.60.40.4.10.10	cT1b2
cT1c	cT1c	T_PrimaireTumor	2.16.840.1.113883.2.4.3.11.60.40.4.10.10	cT1c
cT1c1	cT1c1	T_PrimaireTumor	2.16.840.1.113883.2.4.3.11.60.40.4.10.10	cT1c1
cT1c2	cT1c2	T_PrimaireTumor	2.16.840.1.113883.2.4.3.11.60.40.4.10.10	cT1c2
cT1c3	cT1c3	T_PrimaireTumor	2.16.840.1.113883.2.4.3.11.60.40.4.10.10	cT1c3
cT1d	cT1d	T_PrimaireTumor	2.16.840.1.113883.2.4.3.11.60.40.4.10.10	cT1d
cT2	cT2	T_PrimaireTumor	2.16.840.1.113883.2.4.3.11.60.40.4.10.10	cT2
cT2a	cT2a	T_PrimaireTumor	2.16.840.1.113883.2.4.3.11.60.40.4.10.10	cT2a
cT2a1	cT2a1	T_PrimaireTumor	2.16.840.1.113883.2.4.3.11.60.40.4.10.10	cT2a1
cT2a2	cT2a2	T_PrimaireTumor	2.16.840.1.113883.2.4.3.11.60.40.4.10.10	cT2a2
cT2b	cT2b	T_PrimaireTumor	2.16.840.1.113883.2.4.3.11.60.40.4.10.10	cT2b
cT2c	cT2c	T_PrimaireTumor	2.16.840.1.113883.2.4.3.11.60.40.4.10.10	cT2c

cT2d	cT2d	T_PrimaireTumor	2.16.840.1.113883.2.4.3.11.60.40.4.10.10	cT2d
cT3	cT3	T_PrimaireTumor	2.16.840.1.113883.2.4.3.11.60.40.4.10.10	cT3
cT3a	cT3a	T_PrimaireTumor	2.16.840.1.113883.2.4.3.11.60.40.4.10.10	cT3a
cT3b	cT3b	T_PrimaireTumor	2.16.840.1.113883.2.4.3.11.60.40.4.10.10	cT3b
cT3c	cT3c	T_PrimaireTumor	2.16.840.1.113883.2.4.3.11.60.40.4.10.10	cT3c
cT3d	cT3d	T_PrimaireTumor	2.16.840.1.113883.2.4.3.11.60.40.4.10.10	cT3d
cT3e	cT3e	T_PrimaireTumor	2.16.840.1.113883.2.4.3.11.60.40.4.10.10	cT3e
cT4	cT4	T_PrimaireTumor	2.16.840.1.113883.2.4.3.11.60.40.4.10.10	cT4
cT4a	cT4a	T_PrimaireTumor	2.16.840.1.113883.2.4.3.11.60.40.4.10.10	cT4a
cT4b	cT4b	T_PrimaireTumor	2.16.840.1.113883.2.4.3.11.60.40.4.10.10	cT4b
cT4c	cT4c	T_PrimaireTumor	2.16.840.1.113883.2.4.3.11.60.40.4.10.10	cT4c
cT4d	cT4d	T_PrimaireTumor	2.16.840.1.113883.2.4.3.11.60.40.4.10.10	cT4d
cT4e	cT4e	T_PrimaireTumor	2.16.840.1.113883.2.4.3.11.60.40.4.10.10	cT4e

<b>«document»</b>	<b>ycT_PrimaryTumorCodelist</b>		
<b>Definitie</b>	De primaire tumor (T) voor een klinische classificatie uitgevoerd tijdens of na een initiële multimodaliteitsbehandeling (zijnde niet- chirurgisch).		
<b>Datatype</b>			
<b>DCM::ValueSetBinding</b>	Extensible		
<b>DCM::ValueSetId</b>	2.16.840.1.113883.2.4.3.11.60.40.2.4.27.10		
<b>HCIM::ValueSetLanguage</b>	--		
<b>Opties</b>			

<b>ycT_PrimaireTumorCodelist</b>	<b>OID: 2.16.840.1.113883.2.4.3.11.60.40.2.4.27.10</b>
----------------------------------	--

<b>Concept Name</b>	<b>Concept Code</b>	<b>Coding System Name</b>	<b>Coding System OID</b>	<b>Description</b>
ycTx	ycTx	T_PrimaireTumor	2.16.840.1.113883.2.4.3.11.60.40.4.10.10	ycTx
ycT0	ycT0	T_PrimaireTumor	2.16.840.1.113883.2.4.3.11.60.40.4.10.10	ycT0
ycTa	ycTa	T_PrimaireTumor	2.16.840.1.113883.2.4.3.11.60.40.4.10.10	ycTa
ycTis	ycTis	T_PrimaireTumor	2.16.840.1.113883.2.4.3.11.60.40.4.10.10	ycTis
ycTis (DCIS)	ycTis (DCIS)	T_PrimaireTumor	2.16.840.1.113883.2.4.3.11.60.40.4.10.10	ycTis (DCIS)
ycTis (LAMN)	ycTis (LAMN)	T_PrimaireTumor	2.16.840.1.113883.2.4.3.11.60.40.4.10.10	ycTis (LAMN)
ycTis (LCIS)	ycTis (LCIS)	T_PrimaireTumor	2.16.840.1.113883.2.4.3.11.60.40.4.10.10	ycTis (LCIS)
ycTis (Paget)	ycTis (Paget)	T_PrimaireTumor	2.16.840.1.113883.2.4.3.11.60.40.4.10.10	ycTis (Paget)
ycTis pu	ycTis pu	T_PrimaireTumor	2.16.840.1.113883.2.4.3.11.60.40.4.10.10	ycTis pu
ycT1	ycT1	T_PrimaireTumor	2.16.840.1.113883.2.4.3.11.60.40.4.10.10	ycT1
ycT1mi	ycT1mi	T_PrimaireTumor	2.16.840.1.113883.2.4.3.11.60.40.4.10.10	ycT1mi
ycT1a	ycT1a	T_PrimaireTumor	2.16.840.1.113883.2.4.3.11.60.40.4.10.10	ycT1a
ycT1a1	ycT1a1	T_PrimaireTumor	2.16.840.1.113883.2.4.3.11.60.40.4.10.10	ycT1a1
ycT1a2	ycT1a2	T_PrimaireTumor	2.16.840.1.113883.2.4.3.11.60.40.4.10.10	ycT1a2
ycT1b	ycT1b	T_PrimaireTumor	2.16.840.1.113883.2.4.3.11.60.40.4.10.10	ycT1b
ycT1b1	ycT1b1	T_PrimaireTumor	2.16.840.1.113883.2.4.3.11.60.40.4.10.10	ycT1b1
ycT1b2	ycT1b2	T_PrimaireTumor	2.16.840.1.113883.2.4.3.11.60.40.4.10.10	ycT1b2
ycT1c	ycT1c	T_PrimaireTumor	2.16.840.1.113883.2.4.3.11.60.40.4.10.10	ycT1c
ycT1c1	ycT1c1	T_PrimaireTumor	2.16.840.1.113883.2.4.3.11.60.40.4.10.10	ycT1c1
ycT1c2	ycT1c2	T_PrimaireTumor	2.16.840.1.113883.2.4.3.11.60.40.4.10.10	ycT1c2
ycT1c3	ycT1c3	T_PrimaireTumor	2.16.840.1.113883.2.4.3.11.60.40.4.10.10	ycT1c3

ycT1d	ycT1d	T_PrimaireTumor	2.16.840.1.113883.2.4.3.11.60.40.4.10.10	ycT1d
ycT2	ycT2	T_PrimaireTumor	2.16.840.1.113883.2.4.3.11.60.40.4.10.10	ycT2
ycT2a	ycT2a	T_PrimaireTumor	2.16.840.1.113883.2.4.3.11.60.40.4.10.10	ycT2a
ycT2a1	ycT2a1	T_PrimaireTumor	2.16.840.1.113883.2.4.3.11.60.40.4.10.10	ycT2a1
ycT2a2	ycT2a2	T_PrimaireTumor	2.16.840.1.113883.2.4.3.11.60.40.4.10.10	ycT2a2
ycT2b	ycT2b	T_PrimaireTumor	2.16.840.1.113883.2.4.3.11.60.40.4.10.10	ycT2b
ycT2c	ycT2c	T_PrimaireTumor	2.16.840.1.113883.2.4.3.11.60.40.4.10.10	ycT2c
ycT2d	ycT2d	T_PrimaireTumor	2.16.840.1.113883.2.4.3.11.60.40.4.10.10	ycT2d
ycT3	ycT3	T_PrimaireTumor	2.16.840.1.113883.2.4.3.11.60.40.4.10.10	ycT3
ycT3a	ycT3a	T_PrimaireTumor	2.16.840.1.113883.2.4.3.11.60.40.4.10.10	ycT3a
ycT3b	ycT3b	T_PrimaireTumor	2.16.840.1.113883.2.4.3.11.60.40.4.10.10	ycT3b
ycT3c	ycT3c	T_PrimaireTumor	2.16.840.1.113883.2.4.3.11.60.40.4.10.10	ycT3c
ycT3d	ycT3d	T_PrimaireTumor	2.16.840.1.113883.2.4.3.11.60.40.4.10.10	ycT3d
ycT3e	ycT3e	T_PrimaireTumor	2.16.840.1.113883.2.4.3.11.60.40.4.10.10	ycT3e
ycT4	ycT4	T_PrimaireTumor	2.16.840.1.113883.2.4.3.11.60.40.4.10.10	ycT4
ycT4a	ycT4a	T_PrimaireTumor	2.16.840.1.113883.2.4.3.11.60.40.4.10.10	ycT4a
ycT4b	ycT4b	T_PrimaireTumor	2.16.840.1.113883.2.4.3.11.60.40.4.10.10	ycT4b
ycT4c	ycT4c	T_PrimaireTumor	2.16.840.1.113883.2.4.3.11.60.40.4.10.10	ycT4c
ycT4d	ycT4d	T_PrimaireTumor	2.16.840.1.113883.2.4.3.11.60.40.4.10.10	ycT4d
ycT4e	ycT4e	T_PrimaireTumor	2.16.840.1.113883.2.4.3.11.60.40.4.10.10	ycT4e

<b>«document»</b>	<b>pT_PrimaryTumorCodelist</b>	
<b>Definitie</b>	De primaire tumor (T) voor een post chirurgische histologische pathologische classificatie. Dit is gebaseerd op de gegevens van voor de behandeling, aangevuld met pathologisch onderzoek na een heekkundige behandeling.	
<b>Datatype</b>		
<b>DCM::ValueSetBinding</b>	Extensible	
<b>DCM::ValueSetId</b>	2.16.840.1.113883.2.4.3.11.60.40.2.4.27.11	
<b>HCIM::ValueSetLanguage</b>	--	
<b>Opties</b>		

<b>pT_PrimaireTumorCodelist</b>			<b>OID: 2.16.840.1.113883.2.4.3.11.60.40.2.4.27.11</b>	
<b>Concept Name</b>	<b>Concept Code</b>	<b>Coding System Name</b>	<b>Coding System OID</b>	<b>Description</b>
pTx	pTx	T_PrimaireTumor	2.16.840.1.113883.2.4.3.11.60.40.4.10.10	pTx
pT0	pT0	T_PrimaireTumor	2.16.840.1.113883.2.4.3.11.60.40.4.10.10	pT0
pTa	pTa	T_PrimaireTumor	2.16.840.1.113883.2.4.3.11.60.40.4.10.10	pTa
pTis	pTis	T_PrimaireTumor	2.16.840.1.113883.2.4.3.11.60.40.4.10.10	pTis
pTis (DCIS)	pTis (DCIS)	T_PrimaireTumor	2.16.840.1.113883.2.4.3.11.60.40.4.10.10	pTis (DCIS)
pTis (LAMN)	pTis (LAMN)	T_PrimaireTumor	2.16.840.1.113883.2.4.3.11.60.40.4.10.10	pTis (LAMN)
pTis (LCIS)	pTis (LCIS)	T_PrimaireTumor	2.16.840.1.113883.2.4.3.11.60.40.4.10.10	pTis (LCIS)
pTis (Paget)	pTis (Paget)	T_PrimaireTumor	2.16.840.1.113883.2.4.3.11.60.40.4.10.10	pTis (Paget)
pTis pu	pTis pu	T_PrimaireTumor	2.16.840.1.113883.2.4.3.11.60.40.4.10.10	pTis pu

pT1	pT1	T_PrimaireTumor	2.16.840.1.113883.2.4.3.11.60.40.4.10.10	pT1
pT1mi	pT1mi	T_PrimaireTumor	2.16.840.1.113883.2.4.3.11.60.40.4.10.10	pT1mi
pT1a	pT1a	T_PrimaireTumor	2.16.840.1.113883.2.4.3.11.60.40.4.10.10	pT1a
pT1a1	pT1a1	T_PrimaireTumor	2.16.840.1.113883.2.4.3.11.60.40.4.10.10	pT1a1
pT1a2	pT1a2	T_PrimaireTumor	2.16.840.1.113883.2.4.3.11.60.40.4.10.10	pT1a2
pT1b	pT1b	T_PrimaireTumor	2.16.840.1.113883.2.4.3.11.60.40.4.10.10	pT1b
pT1b1	pT1b1	T_PrimaireTumor	2.16.840.1.113883.2.4.3.11.60.40.4.10.10	pT1b1
pT1b2	pT1b2	T_PrimaireTumor	2.16.840.1.113883.2.4.3.11.60.40.4.10.10	pT1b2
pT1c	pT1c	T_PrimaireTumor	2.16.840.1.113883.2.4.3.11.60.40.4.10.10	pT1c
pT1c1	pT1c1	T_PrimaireTumor	2.16.840.1.113883.2.4.3.11.60.40.4.10.10	pT1c1
pT1c2	pT1c2	T_PrimaireTumor	2.16.840.1.113883.2.4.3.11.60.40.4.10.10	pT1c2
pT1c3	pT1c3	T_PrimaireTumor	2.16.840.1.113883.2.4.3.11.60.40.4.10.10	pT1c3
pT1d	pT1d	T_PrimaireTumor	2.16.840.1.113883.2.4.3.11.60.40.4.10.10	pT1d
pT2	pT2	T_PrimaireTumor	2.16.840.1.113883.2.4.3.11.60.40.4.10.10	pT2
pT2a	pT2a	T_PrimaireTumor	2.16.840.1.113883.2.4.3.11.60.40.4.10.10	pT2a
pT2a1	pT2a1	T_PrimaireTumor	2.16.840.1.113883.2.4.3.11.60.40.4.10.10	pT2a1
pT2a2	pT2a2	T_PrimaireTumor	2.16.840.1.113883.2.4.3.11.60.40.4.10.10	pT2a2
pT2b	pT2b	T_PrimaireTumor	2.16.840.1.113883.2.4.3.11.60.40.4.10.10	pT2b
pT2c	pT2c	T_PrimaireTumor	2.16.840.1.113883.2.4.3.11.60.40.4.10.10	pT2c
pT2d	pT2d	T_PrimaireTumor	2.16.840.1.113883.2.4.3.11.60.40.4.10.10	pT2d
pT3	pT3	T_PrimaireTumor	2.16.840.1.113883.2.4.3.11.60.40.4.10.10	pT3
pT3a	pT3a	T_PrimaireTumor	2.16.840.1.113883.2.4.3.11.60.40.4.10.10	pT3a
pT3b	pT3b	T_PrimaireTumor	2.16.840.1.113883.2.4.3.11.60.40.4.10.10	pT3b
pT3c	pT3c	T_PrimaireTumor	2.16.840.1.113883.2.4.3.11.60.40.4.10.10	pT3c
pT3d	pT3d	T_PrimaireTumor	2.16.840.1.113883.2.4.3.11.60.40.4.10.10	pT3d
pT4	pT4	T_PrimaireTumor	2.16.840.1.113883.2.4.3.11.60.40.4.10.10	pT4
pT4a	pT4a	T_PrimaireTumor	2.16.840.1.113883.2.4.3.11.60.40.4.10.10	pT4a
pT4b	pT4b	T_PrimaireTumor	2.16.840.1.113883.2.4.3.11.60.40.4.10.10	pT4b
pT4c	pT4c	T_PrimaireTumor	2.16.840.1.113883.2.4.3.11.60.40.4.10.10	pT4c
pT4d	pT4d	T_PrimaireTumor	2.16.840.1.113883.2.4.3.11.60.40.4.10.10	pT4d
pT4e	pT4e	T_PrimaireTumor	2.16.840.1.113883.2.4.3.11.60.40.4.10.10	pT4e

<b>«document»</b>	<b>ypT_PrimaryTumorCodelist</b>	
<b>Definitie</b>	De primaire tumor (T) voor een classificatie uitgevoerd tijdens of na een initiële multimodaliteitsbehandeling (waaronder ook chirurgische behandeling).	
<b>Datatype</b>		
<b>DCM::ValueSetBinding</b>	Extensible	
<b>DCM::ValueSetId</b>	2.16.840.1.113883.2.4.3.11.60.40.2.4.27.12	
<b>HCIM::ValueSetLanguage</b>	--	
<b>Opties</b>		

**ypT\_PrimaireTumorCodelist**

**OID: 2.16.840.1.113883.2.4.3.11.60.40.2.4.27.12**

Concept Name	Concept Code	Coding System Name	Coding System OID	Description
ypTx	ypTx	T_PrimaireTumor	2.16.840.1.113883.2.4.3.11.60.40.4.10.10	ypTx
ypT0	ypT0	T_PrimaireTumor	2.16.840.1.113883.2.4.3.11.60.40.4.10.10	ypT0
ypTa	ypTa	T_PrimaireTumor	2.16.840.1.113883.2.4.3.11.60.40.4.10.10	ypTa
ypTis	ypTis	T_PrimaireTumor	2.16.840.1.113883.2.4.3.11.60.40.4.10.10	ypTis
ypTis (DCIS)	ypTis (DCIS)	T_PrimaireTumor	2.16.840.1.113883.2.4.3.11.60.40.4.10.10	ypTis (DCIS)
ypTis (LAMN)	ypTis (LAMN)	T_PrimaireTumor	2.16.840.1.113883.2.4.3.11.60.40.4.10.10	ypTis (LAMN)
ypTis (LCIS)	ypTis (LCIS)	T_PrimaireTumor	2.16.840.1.113883.2.4.3.11.60.40.4.10.10	ypTis (LCIS)
ypTis (Paget)	ypTis (Paget)	T_PrimaireTumor	2.16.840.1.113883.2.4.3.11.60.40.4.10.10	ypTis (Paget)
ypTis pu	ypTis pu	T_PrimaireTumor	2.16.840.1.113883.2.4.3.11.60.40.4.10.10	ypTis pu
ypT1	ypT1	T_PrimaireTumor	2.16.840.1.113883.2.4.3.11.60.40.4.10.10	ypT1
ypT1mi	ypT1mi	T_PrimaireTumor	2.16.840.1.113883.2.4.3.11.60.40.4.10.10	ypT1mi
ypT1a	ypT1a	T_PrimaireTumor	2.16.840.1.113883.2.4.3.11.60.40.4.10.10	ypT1a
ypT1a1	ypT1a1	T_PrimaireTumor	2.16.840.1.113883.2.4.3.11.60.40.4.10.10	ypT1a1
ypT1a2	ypT1a2	T_PrimaireTumor	2.16.840.1.113883.2.4.3.11.60.40.4.10.10	ypT1a2
ypT1b	ypT1b	T_PrimaireTumor	2.16.840.1.113883.2.4.3.11.60.40.4.10.10	ypT1b
ypT1b1	ypT1b1	T_PrimaireTumor	2.16.840.1.113883.2.4.3.11.60.40.4.10.10	ypT1b1
ypT1b2	ypT1b2	T_PrimaireTumor	2.16.840.1.113883.2.4.3.11.60.40.4.10.10	ypT1b2
ypT1c	ypT1c	T_PrimaireTumor	2.16.840.1.113883.2.4.3.11.60.40.4.10.10	ypT1c
ypT1c1	ypT1c1	T_PrimaireTumor	2.16.840.1.113883.2.4.3.11.60.40.4.10.10	ypT1c1
ypT1c2	ypT1c2	T_PrimaireTumor	2.16.840.1.113883.2.4.3.11.60.40.4.10.10	ypT1c2
ypT1c3	ypT1c3	T_PrimaireTumor	2.16.840.1.113883.2.4.3.11.60.40.4.10.10	ypT1c3
ypT1d	ypT1d	T_PrimaireTumor	2.16.840.1.113883.2.4.3.11.60.40.4.10.10	ypT1d
ypT2	ypT2	T_PrimaireTumor	2.16.840.1.113883.2.4.3.11.60.40.4.10.10	ypT2
ypT2a	ypT2a	T_PrimaireTumor	2.16.840.1.113883.2.4.3.11.60.40.4.10.10	ypT2a
ypT2a1	ypT2a1	T_PrimaireTumor	2.16.840.1.113883.2.4.3.11.60.40.4.10.10	ypT2a1
ypT2a2	ypT2a2	T_PrimaireTumor	2.16.840.1.113883.2.4.3.11.60.40.4.10.10	ypT2a2
ypT2b	ypT2b	T_PrimaireTumor	2.16.840.1.113883.2.4.3.11.60.40.4.10.10	ypT2b
ypT2c	ypT2c	T_PrimaireTumor	2.16.840.1.113883.2.4.3.11.60.40.4.10.10	ypT2c
ypT2d	ypT2d	T_PrimaireTumor	2.16.840.1.113883.2.4.3.11.60.40.4.10.10	ypT2d
ypT3	ypT3	T_PrimaireTumor	2.16.840.1.113883.2.4.3.11.60.40.4.10.10	ypT3
ypT3a	ypT3a	T_PrimaireTumor	2.16.840.1.113883.2.4.3.11.60.40.4.10.10	ypT3a
ypT3b	ypT3b	T_PrimaireTumor	2.16.840.1.113883.2.4.3.11.60.40.4.10.10	ypT3b
ypT3c	ypT3c	T_PrimaireTumor	2.16.840.1.113883.2.4.3.11.60.40.4.10.10	ypT3c
ypT3d	ypT3d	T_PrimaireTumor	2.16.840.1.113883.2.4.3.11.60.40.4.10.10	ypT3d
ypT4	ypT4	T_PrimaireTumor	2.16.840.1.113883.2.4.3.11.60.40.4.10.10	ypT4
ypT4a	ypT4a	T_PrimaireTumor	2.16.840.1.113883.2.4.3.11.60.40.4.10.10	ypT4a
ypT4b	ypT4b	T_PrimaireTumor	2.16.840.1.113883.2.4.3.11.60.40.4.10.10	ypT4b
ypT4c	ypT4c	T_PrimaireTumor	2.16.840.1.113883.2.4.3.11.60.40.4.10.10	ypT4c
ypT4d	ypT4d	T_PrimaireTumor	2.16.840.1.113883.2.4.3.11.60.40.4.10.10	ypT4d
ypT4e	ypT4e	T_PrimaireTumor	2.16.840.1.113883.2.4.3.11.60.40.4.10.10	ypT4e

<b>«document»</b>	rcT_PrimaryTumorCodelist	
<b>Definitie</b>	De primaire tumor (T) voor een klinische classificatie in geval van een recidiverende tumor (na een ziektevrij interval).	
<b>Datatype</b>		
<b>DCM::ValueSetBinding</b>	Extensible	
<b>DCM::ValueSetId</b>	2.16.840.1.113883.2.4.3.11.60.40.2.4.27.13	
<b>HCIM::ValueSetLanguage</b>	--	
<b>Opties</b>		

<b>rcT_PrimaireTumorCodelijst</b>	<b>OID: 2.16.840.1.113883.2.4.3.11.60.40.2.4.27.13</b>
-----------------------------------	--

Concept Name	Concept Code	Coding System Name	Coding System OID	Description
rcTx	rcTx	T_PrimaireTumor	2.16.840.1.113883.2.4.3.11.60.40.4.10.10	rcTx
rcT0	rcT0	T_PrimaireTumor	2.16.840.1.113883.2.4.3.11.60.40.4.10.10	rcT0
rcTa	rcTa	T_PrimaireTumor	2.16.840.1.113883.2.4.3.11.60.40.4.10.10	rcTa
rcTis	rcTis	T_PrimaireTumor	2.16.840.1.113883.2.4.3.11.60.40.4.10.10	rcTis
rcTis (DCIS)	rcTis (DCIS)	T_PrimaireTumor	2.16.840.1.113883.2.4.3.11.60.40.4.10.10	rcTis (DCIS)
rcTis (LAMN)	rcTis (LAMN)	T_PrimaireTumor	2.16.840.1.113883.2.4.3.11.60.40.4.10.10	rcTis (LAMN)
rcTis (LCIS)	rcTis (LCIS)	T_PrimaireTumor	2.16.840.1.113883.2.4.3.11.60.40.4.10.10	rcTis (LCIS)
rcTis (Paget)	rcTis (Paget)	T_PrimaireTumor	2.16.840.1.113883.2.4.3.11.60.40.4.10.10	rcTis (Paget)
rcTis pu	rcTis pu	T_PrimaireTumor	2.16.840.1.113883.2.4.3.11.60.40.4.10.10	rcTis pu
rcT1	rcT1	T_PrimaireTumor	2.16.840.1.113883.2.4.3.11.60.40.4.10.10	rcT1
rcT1mi	rcT1mi	T_PrimaireTumor	2.16.840.1.113883.2.4.3.11.60.40.4.10.10	rcT1mi
rcT1a	rcT1a	T_PrimaireTumor	2.16.840.1.113883.2.4.3.11.60.40.4.10.10	rcT1a
rcT1a1	rcT1a1	T_PrimaireTumor	2.16.840.1.113883.2.4.3.11.60.40.4.10.10	rcT1a1
rcT1a2	rcT1a2	T_PrimaireTumor	2.16.840.1.113883.2.4.3.11.60.40.4.10.10	rcT1a2
rcT1b	rcT1b	T_PrimaireTumor	2.16.840.1.113883.2.4.3.11.60.40.4.10.10	rcT1b
rcT1b1	rcT1b1	T_PrimaireTumor	2.16.840.1.113883.2.4.3.11.60.40.4.10.10	rcT1b1
rcT1b2	rcT1b2	T_PrimaireTumor	2.16.840.1.113883.2.4.3.11.60.40.4.10.10	rcT1b2
rcT1c	rcT1c	T_PrimaireTumor	2.16.840.1.113883.2.4.3.11.60.40.4.10.10	rcT1c
rcT1c1	rcT1c1	T_PrimaireTumor	2.16.840.1.113883.2.4.3.11.60.40.4.10.10	rcT1c1
rcT1c2	rcT1c2	T_PrimaireTumor	2.16.840.1.113883.2.4.3.11.60.40.4.10.10	rcT1c2
rcT1c3	rcT1c3	T_PrimaireTumor	2.16.840.1.113883.2.4.3.11.60.40.4.10.10	rcT1c3
rcT1d	rcT1d	T_PrimaireTumor	2.16.840.1.113883.2.4.3.11.60.40.4.10.10	rcT1d
rcT2	rcT2	T_PrimaireTumor	2.16.840.1.113883.2.4.3.11.60.40.4.10.10	rcT2
rcT2a	rcT2a	T_PrimaireTumor	2.16.840.1.113883.2.4.3.11.60.40.4.10.10	rcT2a
rcT2a1	rcT2a1	T_PrimaireTumor	2.16.840.1.113883.2.4.3.11.60.40.4.10.10	rcT2a1
rcT2a2	rcT2a2	T_PrimaireTumor	2.16.840.1.113883.2.4.3.11.60.40.4.10.10	rcT2a2
rcT2b	rcT2b	T_PrimaireTumor	2.16.840.1.113883.2.4.3.11.60.40.4.10.10	rcT2b
rcT2c	rcT2c	T_PrimaireTumor	2.16.840.1.113883.2.4.3.11.60.40.4.10.10	rcT2c
rcT2d	rcT2d	T_PrimaireTumor	2.16.840.1.113883.2.4.3.11.60.40.4.10.10	rcT2d
rcT3	rcT3	T_PrimaireTumor	2.16.840.1.113883.2.4.3.11.60.40.4.10.10	rcT3
rcT3a	rcT3a	T_PrimaireTumor	2.16.840.1.113883.2.4.3.11.60.40.4.10.10	rcT3a
rcT3b	rcT3b	T_PrimaireTumor	2.16.840.1.113883.2.4.3.11.60.40.4.10.10	rcT3b
rcT3c	rcT3c	T_PrimaireTumor	2.16.840.1.113883.2.4.3.11.60.40.4.10.10	rcT3c
rcT3d	rcT3d	T_PrimaireTumor	2.16.840.1.113883.2.4.3.11.60.40.4.10.10	rcT3d
rcT3e	rcT3e	T_PrimaireTumor	2.16.840.1.113883.2.4.3.11.60.40.4.10.10	rcT3e
rcT4	rcT4	T_PrimaireTumor	2.16.840.1.113883.2.4.3.11.60.40.4.10.10	rcT4

rcT4a	rcT4a	T_PrimaireTumor	2.16.840.1.113883.2.4.3.11.60.40.4.10.10	rcT4a
rcT4b	rcT4b	T_PrimaireTumor	2.16.840.1.113883.2.4.3.11.60.40.4.10.10	rcT4b
rcT4c	rcT4c	T_PrimaireTumor	2.16.840.1.113883.2.4.3.11.60.40.4.10.10	rcT4c
rcT4d	rcT4d	T_PrimaireTumor	2.16.840.1.113883.2.4.3.11.60.40.4.10.10	rcT4d
rcT4e	rcT4e	T_PrimaireTumor	2.16.840.1.113883.2.4.3.11.60.40.4.10.10	rcT4e

<b>«document»</b>	<b>rpT_PrimaryTumorCodelist</b>		
<b>Definitie</b>	De primaire tumor (T) voor een post chirurgische pathologische classificatie in geval van een recidiverende tumor (na een ziektevrij interval).		
<b>Datatype</b>			
<b>DCM::ValueSetBinding</b>	Extensible		
<b>DCM::ValueSetId</b>	2.16.840.1.113883.2.4.3.11.60.40.2.4.27.14		
<b>HCIM::ValueSetLanguage</b>	--		
<b>Opties</b>			

<b>rpT_PrimaireTumorCodelist</b>	<b>OID: 2.16.840.1.113883.2.4.3.11.60.40.2.4.27.14</b>
----------------------------------	--

<b>Concept Name</b>	<b>Concept Code</b>	<b>Coding System Name</b>	<b>Coding System OID</b>	<b>Description</b>
rpTx	rpTx	T_PrimaireTumor	2.16.840.1.113883.2.4.3.11.60.40.4.10.10	rpTx
rpT0	rpT0	T_PrimaireTumor	2.16.840.1.113883.2.4.3.11.60.40.4.10.10	rpT0
rpTa	rpTa	T_PrimaireTumor	2.16.840.1.113883.2.4.3.11.60.40.4.10.10	rpTa
rpTis	rpTis	T_PrimaireTumor	2.16.840.1.113883.2.4.3.11.60.40.4.10.10	rpTis
rpTis (DCIS)	rpTis (DCIS)	T_PrimaireTumor	2.16.840.1.113883.2.4.3.11.60.40.4.10.10	rpTis (DCIS)
rpTis (LAMN)	rpTis (LAMN)	T_PrimaireTumor	2.16.840.1.113883.2.4.3.11.60.40.4.10.10	rpTis (LAMN)
rpTis (LCIS)	rpTis (LCIS)	T_PrimaireTumor	2.16.840.1.113883.2.4.3.11.60.40.4.10.10	rpTis (LCIS)
rpTis (Paget)	rpTis (Paget)	T_PrimaireTumor	2.16.840.1.113883.2.4.3.11.60.40.4.10.10	rpTis (Paget)
rpTis pu	rpTis pu	T_PrimaireTumor	2.16.840.1.113883.2.4.3.11.60.40.4.10.10	rpTis pu
rpT1	rpT1	T_PrimaireTumor	2.16.840.1.113883.2.4.3.11.60.40.4.10.10	rpT1
rpT1mi	rpT1mi	T_PrimaireTumor	2.16.840.1.113883.2.4.3.11.60.40.4.10.10	rpT1mi
rpT1a	rpT1a	T_PrimaireTumor	2.16.840.1.113883.2.4.3.11.60.40.4.10.10	rpT1a
rpT1a1	rpT1a1	T_PrimaireTumor	2.16.840.1.113883.2.4.3.11.60.40.4.10.10	rpT1a1
rpT1a2	rpT1a2	T_PrimaireTumor	2.16.840.1.113883.2.4.3.11.60.40.4.10.10	rpT1a2
rpT1b	rpT1b	T_PrimaireTumor	2.16.840.1.113883.2.4.3.11.60.40.4.10.10	rpT1b
rpT1b1	rpT1b1	T_PrimaireTumor	2.16.840.1.113883.2.4.3.11.60.40.4.10.10	rpT1b1
rpT1b2	rpT1b2	T_PrimaireTumor	2.16.840.1.113883.2.4.3.11.60.40.4.10.10	rpT1b2
rpT1c	rpT1c	T_PrimaireTumor	2.16.840.1.113883.2.4.3.11.60.40.4.10.10	rpT1c
rpT1c1	rpT1c1	T_PrimaireTumor	2.16.840.1.113883.2.4.3.11.60.40.4.10.10	rpT1c1
rpT1c2	rpT1c2	T_PrimaireTumor	2.16.840.1.113883.2.4.3.11.60.40.4.10.10	rpT1c2
rpT1c3	rpT1c3	T_PrimaireTumor	2.16.840.1.113883.2.4.3.11.60.40.4.10.10	rpT1c3
rpT1d	rpT1d	T_PrimaireTumor	2.16.840.1.113883.2.4.3.11.60.40.4.10.10	rpT1d
rpT2	rpT2	T_PrimaireTumor	2.16.840.1.113883.2.4.3.11.60.40.4.10.10	rpT2
rpT2a	rpT2a	T_PrimaireTumor	2.16.840.1.113883.2.4.3.11.60.40.4.10.10	rpT2a
rpT2a1	rpT2a1	T_PrimaireTumor	2.16.840.1.113883.2.4.3.11.60.40.4.10.10	rpT2a1
rpT2a2	rpT2a2	T_PrimaireTumor	2.16.840.1.113883.2.4.3.11.60.40.4.10.10	rpT2a2



rpT2b	rpT2b	T_PrimaireTumor	2.16.840.1.113883.2.4.3.11.60.40.4.10.10	rpT2b
rpT2c	rpT2c	T_PrimaireTumor	2.16.840.1.113883.2.4.3.11.60.40.4.10.10	rpT2c
rpT2d	rpT2d	T_PrimaireTumor	2.16.840.1.113883.2.4.3.11.60.40.4.10.10	rpT2d
rpT3	rpT3	T_PrimaireTumor	2.16.840.1.113883.2.4.3.11.60.40.4.10.10	rpT3
rpT3a	rpT3a	T_PrimaireTumor	2.16.840.1.113883.2.4.3.11.60.40.4.10.10	rpT3a
rpT3b	rpT3b	T_PrimaireTumor	2.16.840.1.113883.2.4.3.11.60.40.4.10.10	rpT3b
rpT3c	rpT3c	T_PrimaireTumor	2.16.840.1.113883.2.4.3.11.60.40.4.10.10	rpT3c
rpT3d	rpT3d	T_PrimaireTumor	2.16.840.1.113883.2.4.3.11.60.40.4.10.10	rpT3d
rpT4	rpT4	T_PrimaireTumor	2.16.840.1.113883.2.4.3.11.60.40.4.10.10	rpT4
rpT4a	rpT4a	T_PrimaireTumor	2.16.840.1.113883.2.4.3.11.60.40.4.10.10	rpT4a
rpT4b	rpT4b	T_PrimaireTumor	2.16.840.1.113883.2.4.3.11.60.40.4.10.10	rpT4b
rpT4c	rpT4c	T_PrimaireTumor	2.16.840.1.113883.2.4.3.11.60.40.4.10.10	rpT4c
rpT4d	rpT4d	T_PrimaireTumor	2.16.840.1.113883.2.4.3.11.60.40.4.10.10	rpT4d
rpT4e	rpT4e	T_PrimaireTumor	2.16.840.1.113883.2.4.3.11.60.40.4.10.10	rpT4e

<b>«document»</b>	<b>aT_PrimaryTumorCodelist</b>		
<b>Definitie</b>	De primaire tumor (T) voor een classificatie vastgesteld tijdens autopsie.		
<b>Datatype</b>			
<b>DCM::ValueSetBinding</b>	Extensible		
<b>DCM::ValueSetId</b>	2.16.840.1.113883.2.4.3.11.60.40.2.4.27.15		
<b>HCIM::ValueSetLanguage</b>	--		
<b>Opties</b>			

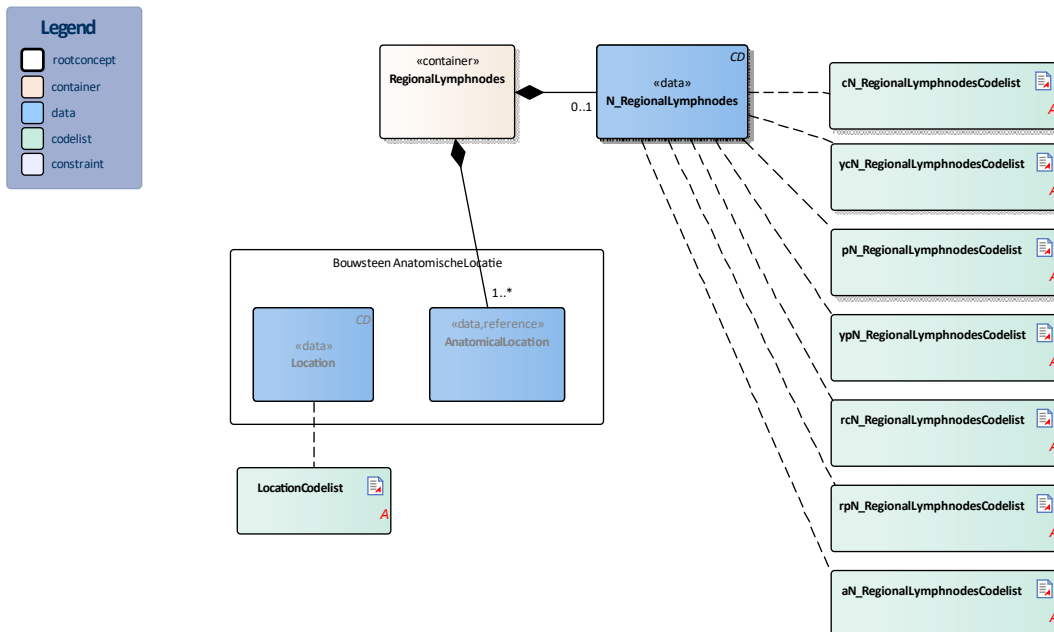
**aT\_PrimaireTumorCodelistijst**      **OID: 2.16.840.1.113883.2.4.3.11.60.40.2.4.27.15**

<b>Concept Name</b>	<b>Concept Code</b>	<b>Coding System Name</b>	<b>Coding System OID</b>	<b>Description</b>
aTx	aTx	T_PrimaireTumor	2.16.840.1.113883.2.4.3.11.60.40.4.10.10	aTx
aT0	aT0	T_PrimaireTumor	2.16.840.1.113883.2.4.3.11.60.40.4.10.10	aT0
aTa	aTa	T_PrimaireTumor	2.16.840.1.113883.2.4.3.11.60.40.4.10.10	aTa
aTis	aTis	T_PrimaireTumor	2.16.840.1.113883.2.4.3.11.60.40.4.10.10	aTis
aTis (DCIS)	aTis (DCIS)	T_PrimaireTumor	2.16.840.1.113883.2.4.3.11.60.40.4.10.10	aTis (DCIS)
aTis (LAMN)	aTis (LAMN)	T_PrimaireTumor	2.16.840.1.113883.2.4.3.11.60.40.4.10.10	aTis (LAMN)
aTis (LCIS)	aTis (LCIS)	T_PrimaireTumor	2.16.840.1.113883.2.4.3.11.60.40.4.10.10	aTis (LCIS)
aTis (Paget)	aTis (Paget)	T_PrimaireTumor	2.16.840.1.113883.2.4.3.11.60.40.4.10.10	aTis (Paget)
aTis pu	aTis pu	T_PrimaireTumor	2.16.840.1.113883.2.4.3.11.60.40.4.10.10	aTis pu
aT1	aT1	T_PrimaireTumor	2.16.840.1.113883.2.4.3.11.60.40.4.10.10	aT1
aT1mi	aT1mi	T_PrimaireTumor	2.16.840.1.113883.2.4.3.11.60.40.4.10.10	aT1mi
aT1a	aT1a	T_PrimaireTumor	2.16.840.1.113883.2.4.3.11.60.40.4.10.10	aT1a
aT1a1	aT1a1	T_PrimaireTumor	2.16.840.1.113883.2.4.3.11.60.40.4.10.10	aT1a1
aT1a2	aT1a2	T_PrimaireTumor	2.16.840.1.113883.2.4.3.11.60.40.4.10.10	aT1a2
aT1b	aT1b	T_PrimaireTumor	2.16.840.1.113883.2.4.3.11.60.40.4.10.10	aT1b
aT1b1	aT1b1	T_PrimaireTumor	2.16.840.1.113883.2.4.3.11.60.40.4.10.10	aT1b1
aT1b2	aT1b2	T_PrimaireTumor	2.16.840.1.113883.2.4.3.11.60.40.4.10.10	aT1b2
aT1c	aT1c	T_PrimaireTumor	2.16.840.1.113883.2.4.3.11.60.40.4.10.10	aT1c
aT1c1	aT1c1	T_PrimaireTumor	2.16.840.1.113883.2.4.3.11.60.40.4.10.10	aT1c1
aT1c2	aT1c2	T_PrimaireTumor	2.16.840.1.113883.2.4.3.11.60.40.4.10.10	aT1c2
aT1c3	aT1c3	T_PrimaireTumor	2.16.840.1.113883.2.4.3.11.60.40.4.10.10	aT1c3

aT1d	aT1d	T_PrimaireTumor	2.16.840.1.113883.2.4.3.11.60.40.4.10.10	aT1d
aT2	aT2	T_PrimaireTumor	2.16.840.1.113883.2.4.3.11.60.40.4.10.10	aT2
aT2a	aT2a	T_PrimaireTumor	2.16.840.1.113883.2.4.3.11.60.40.4.10.10	aT2a
aT2a1	aT2a1	T_PrimaireTumor	2.16.840.1.113883.2.4.3.11.60.40.4.10.10	aT2a1
aT2a2	aT2a2	T_PrimaireTumor	2.16.840.1.113883.2.4.3.11.60.40.4.10.10	aT2a2
aT2b	aT2b	T_PrimaireTumor	2.16.840.1.113883.2.4.3.11.60.40.4.10.10	aT2b
aT2c	aT2c	T_PrimaireTumor	2.16.840.1.113883.2.4.3.11.60.40.4.10.10	aT2c
aT2d	aT2d	T_PrimaireTumor	2.16.840.1.113883.2.4.3.11.60.40.4.10.10	aT2d
aT3	aT3	T_PrimaireTumor	2.16.840.1.113883.2.4.3.11.60.40.4.10.10	aT3
aT3a	aT3a	T_PrimaireTumor	2.16.840.1.113883.2.4.3.11.60.40.4.10.10	aT3a
aT3b	aT3b	T_PrimaireTumor	2.16.840.1.113883.2.4.3.11.60.40.4.10.10	aT3b
aT3c	aT3c	T_PrimaireTumor	2.16.840.1.113883.2.4.3.11.60.40.4.10.10	aT3c
aT3d	aT3d	T_PrimaireTumor	2.16.840.1.113883.2.4.3.11.60.40.4.10.10	aT3d
aT3e	aT3e	T_PrimaireTumor	2.16.840.1.113883.2.4.3.11.60.40.4.10.10	aT3e
aT4	aT4	T_PrimaireTumor	2.16.840.1.113883.2.4.3.11.60.40.4.10.10	aT4
aT4a	aT4a	T_PrimaireTumor	2.16.840.1.113883.2.4.3.11.60.40.4.10.10	aT4a
aT4b	aT4b	T_PrimaireTumor	2.16.840.1.113883.2.4.3.11.60.40.4.10.10	aT4b
aT4c	aT4c	T_PrimaireTumor	2.16.840.1.113883.2.4.3.11.60.40.4.10.10	aT4c
aT4d	aT4d	T_PrimaireTumor	2.16.840.1.113883.2.4.3.11.60.40.4.10.10	aT4d
aT4e	aT4e	T_PrimaireTumor	2.16.840.1.113883.2.4.3.11.60.40.4.10.10	aT4e

Legend	
Definitie	
Datatype	
Opties	

## 1.7.2 Regionallymphnodes



«data»	Location	
Definitie	Location of the lymph node	
Datatype		
DCM::ConceptId	NL-CM:20.7.4	
DCM::DefinitionCode	SNOMED CT: 363698007 Finding site	
DCM::ValueSet	LocationCodelist	OID: 2.16.840.1.113883.2.4.3.11.60.40.2.4.27.29
Opties		

«container»	Regionallymphnodes	
Definitie	Container of the Regionallymphnodes concept.This container contains all data elements of the Regionallymphnodes concept.	
Datatype		
DCM::ConceptId	NL-CM:4.27.21	
DCM::DefinitionCode	SNOMED CT: 301855007 Finding of lymph node	
Opties		

«data»	N_Regionallymphnodes	
Definitie	Staging result of the presence or absence of regional lymph nodes metastasis, the N-category of the TNM classification. 	
Datatype		
DCM::ConceptId	NL-CM:4.27.22	
DCM::DefinitionCode	SNOMED CT: 277206009 N category	
DCM::ValueSet	pN_RegionallymphnodesCo delist	OID: 2.16.840.1.113883.2.4.3.11.60.40.2.4.27.20
DCM::ValueSet	cN_RegionallymphnodesCod elist	OID: 2.16.840.1.113883.2.4.3.11.60.40.2.4.27.18
DCM::ValueSet	ypN_RegionallymphnodesCo delist	OID: 2.16.840.1.113883.2.4.3.11.60.40.2.4.27.21
DCM::ValueSet	ycN_RegionallymphnodesCo delist	OID: 2.16.840.1.113883.2.4.3.11.60.40.2.4.27.19
DCM::ValueSet	rcN_RegionallymphnodesCo delist	OID: 2.16.840.1.113883.2.4.3.11.60.40.2.4.27.22
DCM::ValueSet	aN_RegionallymphnodesCod elist	OID: 2.16.840.1.113883.2.4.3.11.60.40.2.4.27.24
DCM::ValueSet	rpN_RegionallymphnodesCo delist	OID: 2.16.840.1.113883.2.4.3.11.60.40.2.4.27.23
Opties		

«data»	AnatomicalLocation	
Definitie	Contains the localization(s) of the positive regional lymph nodes, caused by the primary tumor.	
Datatype		
DCM::ConceptId	NL-CM:4.27.24	
DCM::DefinitionCode	SNOMED CT: 397440000 Finding site	
DCM::ReferencedConceptId	NL-CM:20.7.1	This is a reference to the rootconcept of information model AnatomicalLocation.
Opties		

«document»	LocationCodelist
------------	------------------

<b>Definitie</b>	
<b>Datatype</b>	
<b>DCM::ValueSetBinding</b>	Required
<b>DCM::ValueSetId</b>	2.16.840.1.113883.2.4.3.11.60.40.2.4.27.29
<b>HCIM::ValueSetLanguage</b>	[2.16.840.1.113883.6.96, SNOMED CT]
<b>Opties</b>	

<b>LocatieCodelijst</b>		<b>OID: 2.16.840.1.113883.2.4.3.11.60.40.2.4.27.29</b>
<b>Codes</b>	<b>Coding Syst. Name</b>	<b>Coding System OID</b>
C77	ICD-O 3	2.16.840.1.113883.6.43.1
SNOMED CT: <59441001   structuur van lymfeklier (lichaamsstructuur)	SNOMED CT	2.16.840.1.113883.6.96

<b>«document»</b>	<b>cN_RegionalLymphnodesCodelist</b>
<b>Definitie</b>	De regionale lymfeklieren (N) voor een klinische classificatie, gebaseerd op gegevens vóór behandeling, zoals klinisch onderzoek, beeldvorming, endoscopie, bipten, chirurgische exploratie of onderzoek onder narcose, en andere onderzoeken.
<b>Datatype</b>	
<b>DCM::ValueSetBinding</b>	Extensible
<b>DCM::ValueSetId</b>	2.16.840.1.113883.2.4.3.11.60.40.2.4.27.18
<b>HCIM::ValueSetLanguage</b>	--
<b>Opties</b>	

<b>cN_RegionaleLymfeklierenCodelijst</b>	<b>OID: 2.16.840.1.113883.2.4.3.11.60.40.2.4.27.18</b>
--	--

Concept Name	Concept Code	Coding System Name	Coding System OID	Description
cNX	cNX	N_RegionaleLymfeklieren	2.16.840.1.113883.2.4.3.11.60.40.4.10.11	cNX
cNX(f)	cNX(f)	N_RegionaleLymfeklieren	2.16.840.1.113883.2.4.3.11.60.40.4.10.11	cNX(f)
cNX(sn)	cNX(sn)	N_RegionaleLymfeklieren	2.16.840.1.113883.2.4.3.11.60.40.4.10.11	cNX(sn)
cNO	cNO	N_RegionaleLymfeklieren	2.16.840.1.113883.2.4.3.11.60.40.4.10.11	cNO
cNO(f)	cNO(f)	N_RegionaleLymfeklieren	2.16.840.1.113883.2.4.3.11.60.40.4.10.11	cNO(f)
cNO(sn)	cNO(sn)	N_RegionaleLymfeklieren	2.16.840.1.113883.2.4.3.11.60.40.4.10.11	cNO(sn)
cNO(i-)	cNO(i-)	N_RegionaleLymfeklieren	2.16.840.1.113883.2.4.3.11.60.40.4.10.11	cNO(i-)
cNO(i-)(sn)	cNO(i-)(sn)	N_RegionaleLymfeklieren	2.16.840.1.113883.2.4.3.11.60.40.4.10.11	cNO(i-)(sn)
cNO(i+)	cNO(i+)	N_RegionaleLymfeklieren	2.16.840.1.113883.2.4.3.11.60.40.4.10.11	cNO(i+)
cNO(i+)(sn)	cNO(i+)(sn)	N_RegionaleLymfeklieren	2.16.840.1.113883.2.4.3.11.60.40.4.10.11	cNO(i+)(sn)
cNO(mol-)	cNO(mol-)	N_RegionaleLymfeklieren	2.16.840.1.113883.2.4.3.11.60.40.4.10.11	cNO(mol-)
cNO(mol-)(sn)	cNO(mol-)(sn)	N_RegionaleLymfeklieren	2.16.840.1.113883.2.4.3.11.60.40.4.10.11	cNO(mol-)(sn)
cNO(mol+)	cNO(mol+)	N_RegionaleLymfeklieren	2.16.840.1.113883.2.4.3.11.60.40.4.10.11	cNO(mol+)

cN0(mol+)(sn)	cN0(mol+)(sn)	N_RegionaleLymf eklieren	2.16.840.1.113883.2.4.3.11.60.40.4.10.11	cN0(mol+)(sn)
cN1	cN1	N_RegionaleLymf eklieren	2.16.840.1.113883.2.4.3.11.60.40.4.10.11	cN1
cN1(f)	cN1(f)	N_RegionaleLymf eklieren	2.16.840.1.113883.2.4.3.11.60.40.4.10.11	cN1(f)
cN1(sn)	cN1(sn)	N_RegionaleLymf eklieren	2.16.840.1.113883.2.4.3.11.60.40.4.10.11	cN1(sn)
cN1mi	cN1mi	N_RegionaleLymf eklieren	2.16.840.1.113883.2.4.3.11.60.40.4.10.11	cN1mi
cN1mi(f)	cN1mi(f)	N_RegionaleLymf eklieren	2.16.840.1.113883.2.4.3.11.60.40.4.10.11	cN1mi(f)
cN1mi(sn)	cN1mi(sn)	N_RegionaleLymf eklieren	2.16.840.1.113883.2.4.3.11.60.40.4.10.11	cN1mi(sn)
cN1a	cN1a	N_RegionaleLymf eklieren	2.16.840.1.113883.2.4.3.11.60.40.4.10.11	cN1a
cN1a(f)	cN1a(f)	N_RegionaleLymf eklieren	2.16.840.1.113883.2.4.3.11.60.40.4.10.11	cN1a(f)
cN1a(sn)	cN1a(sn)	N_RegionaleLymf eklieren	2.16.840.1.113883.2.4.3.11.60.40.4.10.11	cN1a(sn)
cN1b	cN1b	N_RegionaleLymf eklieren	2.16.840.1.113883.2.4.3.11.60.40.4.10.11	cN1b
cN1b(f)	cN1b(f)	N_RegionaleLymf eklieren	2.16.840.1.113883.2.4.3.11.60.40.4.10.11	cN1b(f)
cN1b(sn)	cN1b(sn)	N_RegionaleLymf eklieren	2.16.840.1.113883.2.4.3.11.60.40.4.10.11	cN1b(sn)
cN1c	cN1c	N_RegionaleLymf eklieren	2.16.840.1.113883.2.4.3.11.60.40.4.10.11	cN1c
cN1c(f)	cN1c(f)	N_RegionaleLymf eklieren	2.16.840.1.113883.2.4.3.11.60.40.4.10.11	cN1c(f)
cN1c(sn)	cN1c(sn)	N_RegionaleLymf eklieren	2.16.840.1.113883.2.4.3.11.60.40.4.10.11	cN1c(sn)
cN2	cN2	N_RegionaleLymf eklieren	2.16.840.1.113883.2.4.3.11.60.40.4.10.11	cN2
cN2(f)	cN2(f)	N_RegionaleLymf eklieren	2.16.840.1.113883.2.4.3.11.60.40.4.10.11	cN2(f)
cN2(sn)	cN2(sn)	N_RegionaleLymf eklieren	2.16.840.1.113883.2.4.3.11.60.40.4.10.11	cN2(sn)
cN2a	cN2a	N_RegionaleLymf eklieren	2.16.840.1.113883.2.4.3.11.60.40.4.10.11	cN2a
cN2a(f)	cN2a(f)	N_RegionaleLymf eklieren	2.16.840.1.113883.2.4.3.11.60.40.4.10.11	cN2a(f)
cN2a(sn)	cN2a(sn)	N_RegionaleLymf eklieren	2.16.840.1.113883.2.4.3.11.60.40.4.10.11	cN2a(sn)
cN2b	cN2b	N_RegionaleLymf eklieren	2.16.840.1.113883.2.4.3.11.60.40.4.10.11	cN2b
cN2b(f)	cN2b(f)	N_RegionaleLymf eklieren	2.16.840.1.113883.2.4.3.11.60.40.4.10.11	cN2b(f)
cN2b(sn)	cN2b(sn)	N_RegionaleLymf eklieren	2.16.840.1.113883.2.4.3.11.60.40.4.10.11	cN2b(sn)
cN2c	cN2c	N_RegionaleLymf eklieren	2.16.840.1.113883.2.4.3.11.60.40.4.10.11	cN2c
cN2c(f)	cN2c(f)	N_RegionaleLymf eklieren	2.16.840.1.113883.2.4.3.11.60.40.4.10.11	cN2c(f)
cN2c(sn)	cN2c(sn)	N_RegionaleLymf eklieren	2.16.840.1.113883.2.4.3.11.60.40.4.10.11	cN2c(sn)
cN3	cN3	N_RegionaleLymf eklieren	2.16.840.1.113883.2.4.3.11.60.40.4.10.11	cN3

cN3(f)	cN3(f)	N_RegionaleLymfeklieren	2.16.840.1.113883.2.4.3.11.60.40.4.10.11	cN3(f)
cN3(sn)	cN3(sn)	N_RegionaleLymfeklieren	2.16.840.1.113883.2.4.3.11.60.40.4.10.11	cN3(sn)
cN3a	cN3a	N_RegionaleLymfeklieren	2.16.840.1.113883.2.4.3.11.60.40.4.10.11	cN3a
cN3a(f)	cN3a(f)	N_RegionaleLymfeklieren	2.16.840.1.113883.2.4.3.11.60.40.4.10.11	cN3a(f)
cN3a(sn)	cN3a(sn)	N_RegionaleLymfeklieren	2.16.840.1.113883.2.4.3.11.60.40.4.10.11	cN3a(sn)
cN3b	cN3b	N_RegionaleLymfeklieren	2.16.840.1.113883.2.4.3.11.60.40.4.10.11	cN3b
cN3b(f)	cN3b(f)	N_RegionaleLymfeklieren	2.16.840.1.113883.2.4.3.11.60.40.4.10.11	cN3b(f)
cN3b(sn)	cN3b(sn)	N_RegionaleLymfeklieren	2.16.840.1.113883.2.4.3.11.60.40.4.10.11	cN3b(sn)
cN3c	cN3c	N_RegionaleLymfeklieren	2.16.840.1.113883.2.4.3.11.60.40.4.10.11	cN3c
cN3c(f)	cN3c(f)	N_RegionaleLymfeklieren	2.16.840.1.113883.2.4.3.11.60.40.4.10.11	cN3c(f)
cN3c(sn)	cN3c(sn)	N_RegionaleLymfeklieren	2.16.840.1.113883.2.4.3.11.60.40.4.10.11	cN3c(sn)

<b>«document»</b>	<b>ycN_RegionalLymphnodesCodelist</b>	
<b>Definitie</b>	De uitbreiding naar regionale lymfeklieren (N) voor een klinische classificatie uitgevoerd tijdens of na een initiële multimodaliteitsbehandeling (zijnde niet- chirurgisch).	
<b>Datatype</b>		
<b>DCM::ValueSetBinding</b>	Extensible	
<b>DCM::ValueSetId</b>	2.16.840.1.113883.2.4.3.11.60.40.2.4.27.19	
<b>HCIM::ValueSetLanguage</b>	--	
<b>Opties</b>		

<b>ycN_RegionaleLymfeklierenCodelijst</b>	<b>OID: 2.16.840.1.113883.2.4.3.11.60.40.2.4.27.19</b>
---	--

Concept Name	Concept Code	Coding System Name	Coding System OID	Description
ycNX	ycNX	N_RegionaleLymfeklieren	2.16.840.1.113883.2.4.3.11.60.40.4.10.11	ycNX
ycNX(f)	ycNX(f)	N_RegionaleLymfeklieren	2.16.840.1.113883.2.4.3.11.60.40.4.10.11	ycNX(f)
ycNX(sn)	ycNX(sn)	N_RegionaleLymfeklieren	2.16.840.1.113883.2.4.3.11.60.40.4.10.11	ycNX(sn)
ycNO	ycNO	N_RegionaleLymfeklieren	2.16.840.1.113883.2.4.3.11.60.40.4.10.11	ycNO
ycNO(f)	ycNO(f)	N_RegionaleLymfeklieren	2.16.840.1.113883.2.4.3.11.60.40.4.10.11	ycNO(f)
ycNO(sn)	ycNO(sn)	N_RegionaleLymfeklieren	2.16.840.1.113883.2.4.3.11.60.40.4.10.11	ycNO(sn)
ycNO(i-)	ycNO(i-)	N_RegionaleLymfeklieren	2.16.840.1.113883.2.4.3.11.60.40.4.10.11	ycNO(i-)
ycNO(i-)(sn)	ycNO(i-)(sn)	N_RegionaleLymfeklieren	2.16.840.1.113883.2.4.3.11.60.40.4.10.11	ycNO(i-)(sn)
ycNO(i+)	ycNO(i+)	N_RegionaleLymfeklieren	2.16.840.1.113883.2.4.3.11.60.40.4.10.11	ycNO(i+)

		eren		
ycN0(i+)(sn)	ycN0(i+)(sn)	N_RegionaleLymfekli eren	2.16.840.1.113883.2.4.3.11.60.40.4.10.11	ycN0(i+)(sn)
ycN0(mol-)	ycN0(mol-)	N_RegionaleLymfekli eren	2.16.840.1.113883.2.4.3.11.60.40.4.10.11	ycN0(mol-)
ycN0(mol-)(sn)	ycN0(mol-)(sn)	N_RegionaleLymfekli eren	2.16.840.1.113883.2.4.3.11.60.40.4.10.11	ycN0(mol-)(sn)
ycN0(mol+)	ycN0(mol+)	N_RegionaleLymfekli eren	2.16.840.1.113883.2.4.3.11.60.40.4.10.11	ycN0(mol+)
ycN0(mol+)(sn)	ycN0(mol+)(sn)	N_RegionaleLymfekli eren	2.16.840.1.113883.2.4.3.11.60.40.4.10.11	ycN0(mol+)(sn)
ycN1	ycN1	N_RegionaleLymfekli eren	2.16.840.1.113883.2.4.3.11.60.40.4.10.11	ycN1
ycN1(f)	ycN1(f)	N_RegionaleLymfekli eren	2.16.840.1.113883.2.4.3.11.60.40.4.10.11	ycN1(f)
ycN1(sn)	ycN1(sn)	N_RegionaleLymfekli eren	2.16.840.1.113883.2.4.3.11.60.40.4.10.11	ycN1(sn)
ycN1mi	ycN1mi	N_RegionaleLymfekli eren	2.16.840.1.113883.2.4.3.11.60.40.4.10.11	ycN1mi
ycN1mi(f)	ycN1mi(f)	N_RegionaleLymfekli eren	2.16.840.1.113883.2.4.3.11.60.40.4.10.11	ycN1mi(f)
ycN1mi(sn)	ycN1mi(sn)	N_RegionaleLymfekli eren	2.16.840.1.113883.2.4.3.11.60.40.4.10.11	ycN1mi(sn)
ycN1a	ycN1a	N_RegionaleLymfekli eren	2.16.840.1.113883.2.4.3.11.60.40.4.10.11	ycN1a
ycN1a(f)	ycN1a(f)	N_RegionaleLymfekli eren	2.16.840.1.113883.2.4.3.11.60.40.4.10.11	ycN1a(f)
ycN1a(sn)	ycN1a(sn)	N_RegionaleLymfekli eren	2.16.840.1.113883.2.4.3.11.60.40.4.10.11	ycN1a(sn)
ycN1b	ycN1b	N_RegionaleLymfekli eren	2.16.840.1.113883.2.4.3.11.60.40.4.10.11	ycN1b
ycN1b(f)	ycN1b(f)	N_RegionaleLymfekli eren	2.16.840.1.113883.2.4.3.11.60.40.4.10.11	ycN1b(f)
ycN1b(sn)	ycN1b(sn)	N_RegionaleLymfekli eren	2.16.840.1.113883.2.4.3.11.60.40.4.10.11	ycN1b(sn)
ycN1c	ycN1c	N_RegionaleLymfekli eren	2.16.840.1.113883.2.4.3.11.60.40.4.10.11	ycN1c
ycN1c(f)	ycN1c(f)	N_RegionaleLymfekli eren	2.16.840.1.113883.2.4.3.11.60.40.4.10.11	ycN1c(f)
ycN1c(sn)	ycN1c(sn)	N_RegionaleLymfekli eren	2.16.840.1.113883.2.4.3.11.60.40.4.10.11	ycN1c(sn)
ycN2	ycN2	N_RegionaleLymfekli eren	2.16.840.1.113883.2.4.3.11.60.40.4.10.11	ycN2
ycN2(f)	ycN2(f)	N_RegionaleLymfekli eren	2.16.840.1.113883.2.4.3.11.60.40.4.10.11	ycN2(f)
ycN2(sn)	ycN2(sn)	N_RegionaleLymfekli eren	2.16.840.1.113883.2.4.3.11.60.40.4.10.11	ycN2(sn)
ycN2a	ycN2a	N_RegionaleLymfekli eren	2.16.840.1.113883.2.4.3.11.60.40.4.10.11	ycN2a
ycN2a(f)	ycN2a(f)	N_RegionaleLymfekli eren	2.16.840.1.113883.2.4.3.11.60.40.4.10.11	ycN2a(f)
ycN2a(sn)	ycN2a(sn)	N_RegionaleLymfekli eren	2.16.840.1.113883.2.4.3.11.60.40.4.10.11	ycN2a(sn)
ycN2b	ycN2b	N_RegionaleLymfekli eren	2.16.840.1.113883.2.4.3.11.60.40.4.10.11	ycN2b
ycN2b(f)	ycN2b(f)	N_RegionaleLymfekli eren	2.16.840.1.113883.2.4.3.11.60.40.4.10.11	ycN2b(f)
ycN2b(sn)	ycN2b(sn)	N_RegionaleLymfekli	2.16.840.1.113883.2.4.3.11.60.40.4.10.11	ycN2b(sn)

		eren		
ycN2c	ycN2c	N_RegionaleLymfekli eren	2.16.840.1.113883.2.4.3.11.60.40.4.10.11	ycN2c
ycN2c(f)	ycN2c(f)	N_RegionaleLymfekli eren	2.16.840.1.113883.2.4.3.11.60.40.4.10.11	ycN2c(f)
ycN2c(sn)	ycN2c(sn)	N_RegionaleLymfekli eren	2.16.840.1.113883.2.4.3.11.60.40.4.10.11	ycN2c(sn)
ycN3	ycN3	N_RegionaleLymfekli eren	2.16.840.1.113883.2.4.3.11.60.40.4.10.11	ycN3
ycN3(f)	ycN3(f)	N_RegionaleLymfekli eren	2.16.840.1.113883.2.4.3.11.60.40.4.10.11	ycN3(f)
ycN3(sn)	ycN3(sn)	N_RegionaleLymfekli eren	2.16.840.1.113883.2.4.3.11.60.40.4.10.11	ycN3(sn)
ycN3a	ycN3a	N_RegionaleLymfekli eren	2.16.840.1.113883.2.4.3.11.60.40.4.10.11	ycN3a
ycN3a(f)	ycN3a(f)	N_RegionaleLymfekli eren	2.16.840.1.113883.2.4.3.11.60.40.4.10.11	ycN3a(f)
ycN3a(sn)	ycN3a(sn)	N_RegionaleLymfekli eren	2.16.840.1.113883.2.4.3.11.60.40.4.10.11	ycN3a(sn)
ycN3b	ycN3b	N_RegionaleLymfekli eren	2.16.840.1.113883.2.4.3.11.60.40.4.10.11	ycN3b
ycN3b(f)	ycN3b(f)	N_RegionaleLymfekli eren	2.16.840.1.113883.2.4.3.11.60.40.4.10.11	ycN3b(f)
ycN3b(sn)	ycN3b(sn)	N_RegionaleLymfekli eren	2.16.840.1.113883.2.4.3.11.60.40.4.10.11	ycN3b(sn)
ycN3c	ycN3c	N_RegionaleLymfekli eren	2.16.840.1.113883.2.4.3.11.60.40.4.10.11	ycN3c
ycN3c(f)	ycN3c(f)	N_RegionaleLymfekli eren	2.16.840.1.113883.2.4.3.11.60.40.4.10.11	ycN3c(f)
ycN3c(sn)	ycN3c(sn)	N_RegionaleLymfekli eren	2.16.840.1.113883.2.4.3.11.60.40.4.10.11	ycN3c(sn)

<b>«document»</b>	<b>pN_RegionalLymphnodesCodelist</b>	
<b>Definitie</b>	De uitbreiding naar regionale lymfeklieren (N) voor een postchirurgische histologische pathologische classificatie. Dit is gebaseerd op de gegevens van voor de behandeling, aangevuld met pathologisch onderzoek na een heelkundige behandeling.	
<b>Datatype</b>		
<b>DCM::ValueSetBinding</b>	Extensible	
<b>DCM::ValueSetId</b>	2.16.840.1.113883.2.4.3.11.60.40.2.4.27.20	
<b>HCIM::ValueSetLanguage</b>	--	
<b>Opties</b>		

<b>pN_RegionaleLymfeklierenCodelijst</b>			<b>OID: 2.16.840.1.113883.2.4.3.11.60.40.2.4.27.20</b>	
<b>Concept Name</b>	<b>Concept Code</b>	<b>Coding System Name</b>	<b>Coding System OID</b>	<b>Description</b>
pNX	pNX	N_RegionaleLymfekli eren	2.16.840.1.113883.2.4.3.11.60.40.4.10.11	pNX
pNX(f)	pNX(f)	N_RegionaleLymfekli eren	2.16.840.1.113883.2.4.3.11.60.40.4.10.11	pNX(f)
pNX(sn)	pNX(sn)	N_RegionaleLymfekli eren	2.16.840.1.113883.2.4.3.11.60.40.4.10.11	pNX(sn)



pNO	pNO	N_RegionaleLymfekli eren	2.16.840.1.113883.2.4.3.11.60.40.4.10.11	pNO
pNO(f)	pNO(f)	N_RegionaleLymfekli eren	2.16.840.1.113883.2.4.3.11.60.40.4.10.11	pNO(f)
pNO(sn)	pNO(sn)	N_RegionaleLymfekli eren	2.16.840.1.113883.2.4.3.11.60.40.4.10.11	pNO(sn)
pNO(i-)	pNO(i-)	N_RegionaleLymfekli eren	2.16.840.1.113883.2.4.3.11.60.40.4.10.11	pNO(i-)
pNO(i-)(sn)	pNO(i-)(sn)	N_RegionaleLymfekli eren	2.16.840.1.113883.2.4.3.11.60.40.4.10.11	pNO(i-)(sn)
pNO(i+)	pNO(i+)	N_RegionaleLymfekli eren	2.16.840.1.113883.2.4.3.11.60.40.4.10.11	pNO(i+)
pNO(i+)(sn)	pNO(i+)(sn)	N_RegionaleLymfekli eren	2.16.840.1.113883.2.4.3.11.60.40.4.10.11	pNO(i+)(sn)
pNO(mol-)	pNO(mol-)	N_RegionaleLymfekli eren	2.16.840.1.113883.2.4.3.11.60.40.4.10.11	pNO(mol-)
pNO(mol-)(sn)	pNO(mol-)(sn)	N_RegionaleLymfekli eren	2.16.840.1.113883.2.4.3.11.60.40.4.10.11	pNO(mol-)(sn)
pNO(mol+)	pNO(mol+)	N_RegionaleLymfekli eren	2.16.840.1.113883.2.4.3.11.60.40.4.10.11	pNO(mol+)
pNO(mol+)(sn)	pNO(mol+)(sn)	N_RegionaleLymfekli eren	2.16.840.1.113883.2.4.3.11.60.40.4.10.11	pNO(mol+)(sn)
pN1	pN1	N_RegionaleLymfekli eren	2.16.840.1.113883.2.4.3.11.60.40.4.10.11	pN1
pN1(f)	pN1(f)	N_RegionaleLymfekli eren	2.16.840.1.113883.2.4.3.11.60.40.4.10.11	pN1(f)
pN1(sn)	pN1(sn)	N_RegionaleLymfekli eren	2.16.840.1.113883.2.4.3.11.60.40.4.10.11	pN1(sn)
pN1mi	pN1mi	N_RegionaleLymfekli eren	2.16.840.1.113883.2.4.3.11.60.40.4.10.11	pN1mi
pN1mi(f)	pN1mi(f)	N_RegionaleLymfekli eren	2.16.840.1.113883.2.4.3.11.60.40.4.10.11	pN1mi(f)
pN1mi(sn)	pN1mi(sn)	N_RegionaleLymfekli eren	2.16.840.1.113883.2.4.3.11.60.40.4.10.11	pN1mi(sn)
pN1a	pN1a	N_RegionaleLymfekli eren	2.16.840.1.113883.2.4.3.11.60.40.4.10.11	pN1a
pN1a(f)	pN1a(f)	N_RegionaleLymfekli eren	2.16.840.1.113883.2.4.3.11.60.40.4.10.11	pN1a(f)
pN1a(sn)	pN1a(sn)	N_RegionaleLymfekli eren	2.16.840.1.113883.2.4.3.11.60.40.4.10.11	pN1a(sn)
pN1b	pN1b	N_RegionaleLymfekli eren	2.16.840.1.113883.2.4.3.11.60.40.4.10.11	pN1b
pN1b(f)	pN1b(f)	N_RegionaleLymfekli eren	2.16.840.1.113883.2.4.3.11.60.40.4.10.11	pN1b(f)
pN1b(sn)	pN1b(sn)	N_RegionaleLymfekli eren	2.16.840.1.113883.2.4.3.11.60.40.4.10.11	pN1b(sn)
pN1c	pN1c	N_RegionaleLymfekli eren	2.16.840.1.113883.2.4.3.11.60.40.4.10.11	pN1c
pN1c(f)	pN1c(f)	N_RegionaleLymfekli eren	2.16.840.1.113883.2.4.3.11.60.40.4.10.11	pN1c(f)
pN1c(sn)	pN1c(sn)	N_RegionaleLymfekli eren	2.16.840.1.113883.2.4.3.11.60.40.4.10.11	pN1c(sn)
pN2	pN2	N_RegionaleLymfekli eren	2.16.840.1.113883.2.4.3.11.60.40.4.10.11	pN2
pN2(f)	pN2(f)	N_RegionaleLymfekli eren	2.16.840.1.113883.2.4.3.11.60.40.4.10.11	pN2(f)
pN2(sn)	pN2(sn)	N_RegionaleLymfekli eren	2.16.840.1.113883.2.4.3.11.60.40.4.10.11	pN2(sn)

pN2a	pN2a	N_RegionaleLymfeklieren	2.16.840.1.113883.2.4.3.11.60.40.4.10.11	pN2a
pN2a(f)	pN2a(f)	N_RegionaleLymfeklieren	2.16.840.1.113883.2.4.3.11.60.40.4.10.11	pN2a(f)
pN2a(sn)	pN2a(sn)	N_RegionaleLymfeklieren	2.16.840.1.113883.2.4.3.11.60.40.4.10.11	pN2a(sn)
pN2b	pN2b	N_RegionaleLymfeklieren	2.16.840.1.113883.2.4.3.11.60.40.4.10.11	pN2b
pN2b(f)	pN2b(f)	N_RegionaleLymfeklieren	2.16.840.1.113883.2.4.3.11.60.40.4.10.11	pN2b(f)
pN2b(sn)	pN2b(sn)	N_RegionaleLymfeklieren	2.16.840.1.113883.2.4.3.11.60.40.4.10.11	pN2b(sn)
pN2c	pN2c	N_RegionaleLymfeklieren	2.16.840.1.113883.2.4.3.11.60.40.4.10.11	pN2c
pN2c(f)	pN2c(f)	N_RegionaleLymfeklieren	2.16.840.1.113883.2.4.3.11.60.40.4.10.11	pN2c(f)
pN2c(sn)	pN2c(sn)	N_RegionaleLymfeklieren	2.16.840.1.113883.2.4.3.11.60.40.4.10.11	pN2c(sn)
pN3	pN3	N_RegionaleLymfeklieren	2.16.840.1.113883.2.4.3.11.60.40.4.10.11	pN3
pN3(f)	pN3(f)	N_RegionaleLymfeklieren	2.16.840.1.113883.2.4.3.11.60.40.4.10.11	pN3(f)
pN3(sn)	pN3(sn)	N_RegionaleLymfeklieren	2.16.840.1.113883.2.4.3.11.60.40.4.10.11	pN3(sn)
pN3a	pN3a	N_RegionaleLymfeklieren	2.16.840.1.113883.2.4.3.11.60.40.4.10.11	pN3a
pN3a(f)	pN3a(f)	N_RegionaleLymfeklieren	2.16.840.1.113883.2.4.3.11.60.40.4.10.11	pN3a(f)
pN3a(sn)	pN3a(sn)	N_RegionaleLymfeklieren	2.16.840.1.113883.2.4.3.11.60.40.4.10.11	pN3a(sn)
pN3b	pN3b	N_RegionaleLymfeklieren	2.16.840.1.113883.2.4.3.11.60.40.4.10.11	pN3b
pN3b(f)	pN3b(f)	N_RegionaleLymfeklieren	2.16.840.1.113883.2.4.3.11.60.40.4.10.11	pN3b(f)
pN3b(sn)	pN3b(sn)	N_RegionaleLymfeklieren	2.16.840.1.113883.2.4.3.11.60.40.4.10.11	pN3b(sn)
pN3c	pN3c	N_RegionaleLymfeklieren	2.16.840.1.113883.2.4.3.11.60.40.4.10.11	pN3c
pN3c(f)	pN3c(f)	N_RegionaleLymfeklieren	2.16.840.1.113883.2.4.3.11.60.40.4.10.11	pN3c(f)
pN3c(sn)	pN3c(sn)	N_RegionaleLymfeklieren	2.16.840.1.113883.2.4.3.11.60.40.4.10.11	pN3c(sn)

<b>«document»</b>	<b>ypN_RegionalLymphnodesCodelist</b>	
<b>Definitie</b>	De uitbreiding naar regionale lymfeklieren (N) voor een classificatie uitgevoerd tijdens of na een initiële multimodaliteitsbehandeling (waaronder ook chirurgische behandeling).	
<b>Datatype</b>		
<b>DCM::ValueSetBinding</b>	Extensible	
<b>DCM::ValueSetId</b>	2.16.840.1.113883.2.4.3.11.60.40.2.4.27.21	
<b>HCIM::ValueSetLanguage</b>	--	
<b>Opties</b>		
<b>ypN_RegionaleLymfeklierenCodelijst</b>		<b>OID: 2.16.840.1.113883.2.4.3.11.60.40.2.4.27.21</b>

Concept Name	Concept Code	Coding System Name	Coding System OID	Description
ypNX	ypNX	N_RegionaleLymfek lieren	2.16.840.1.113883.2.4.3.11.60.40.4.10.11	ypNX
ypNX(f)	ypNX(f)	N_RegionaleLymfek lieren	2.16.840.1.113883.2.4.3.11.60.40.4.10.11	ypNX(f)
ypNX(sn)	ypNX(sn)	N_RegionaleLymfek lieren	2.16.840.1.113883.2.4.3.11.60.40.4.10.11	ypNX(sn)
ypN0	ypN0	N_RegionaleLymfek lieren	2.16.840.1.113883.2.4.3.11.60.40.4.10.11	ypN0
ypN0(f)	ypN0(f)	N_RegionaleLymfek lieren	2.16.840.1.113883.2.4.3.11.60.40.4.10.11	ypN0(f)
ypN0(sn)	ypN0(sn)	N_RegionaleLymfek lieren	2.16.840.1.113883.2.4.3.11.60.40.4.10.11	ypN0(sn)
ypN0(i-)	ypN0(i-)	N_RegionaleLymfek lieren	2.16.840.1.113883.2.4.3.11.60.40.4.10.11	ypN0(i-)
ypN0(i-)(sn)	ypN0(i-)(sn)	N_RegionaleLymfek lieren	2.16.840.1.113883.2.4.3.11.60.40.4.10.11	ypN0(i-)(sn)
ypN0(i+)	ypN0(i+)	N_RegionaleLymfek lieren	2.16.840.1.113883.2.4.3.11.60.40.4.10.11	ypN0(i+)
ypN0(i+)(sn)	ypN0(i+)(sn)	N_RegionaleLymfek lieren	2.16.840.1.113883.2.4.3.11.60.40.4.10.11	ypN0(i+)(sn)
ypN0(mol-)	ypN0(mol-)	N_RegionaleLymfek lieren	2.16.840.1.113883.2.4.3.11.60.40.4.10.11	ypN0(mol-)
ypN0(mol-)(sn)	ypN0(mol-)(sn)	N_RegionaleLymfek lieren	2.16.840.1.113883.2.4.3.11.60.40.4.10.11	ypN0(mol-)(sn)
ypN0(mol+)	ypN0(mol+)	N_RegionaleLymfek lieren	2.16.840.1.113883.2.4.3.11.60.40.4.10.11	ypN0(mol+)
ypN0(mol+)(sn)	ypN0(mol+)(sn)	N_RegionaleLymfek lieren	2.16.840.1.113883.2.4.3.11.60.40.4.10.11	ypN0(mol+)(sn)
ypN1	ypN1	N_RegionaleLymfek lieren	2.16.840.1.113883.2.4.3.11.60.40.4.10.11	ypN1
ypN1(f)	ypN1(f)	N_RegionaleLymfek lieren	2.16.840.1.113883.2.4.3.11.60.40.4.10.11	ypN1(f)
ypN1(sn)	ypN1(sn)	N_RegionaleLymfek lieren	2.16.840.1.113883.2.4.3.11.60.40.4.10.11	ypN1(sn)
ypN1mi	ypN1mi	N_RegionaleLymfek lieren	2.16.840.1.113883.2.4.3.11.60.40.4.10.11	ypN1mi
ypN1mi(f)	ypN1mi(f)	N_RegionaleLymfek lieren	2.16.840.1.113883.2.4.3.11.60.40.4.10.11	ypN1mi(f)
ypN1mi(sn)	ypN1mi(sn)	N_RegionaleLymfek lieren	2.16.840.1.113883.2.4.3.11.60.40.4.10.11	ypN1mi(sn)
ypN1a	ypN1a	N_RegionaleLymfek lieren	2.16.840.1.113883.2.4.3.11.60.40.4.10.11	ypN1a
ypN1a(f)	ypN1a(f)	N_RegionaleLymfek lieren	2.16.840.1.113883.2.4.3.11.60.40.4.10.11	ypN1a(f)
ypN1a(sn)	ypN1a(sn)	N_RegionaleLymfek lieren	2.16.840.1.113883.2.4.3.11.60.40.4.10.11	ypN1a(sn)
ypN1b	ypN1b	N_RegionaleLymfek lieren	2.16.840.1.113883.2.4.3.11.60.40.4.10.11	ypN1b
ypN1b(f)	ypN1b(f)	N_RegionaleLymfek lieren	2.16.840.1.113883.2.4.3.11.60.40.4.10.11	ypN1b(f)
ypN1b(sn)	ypN1b(sn)	N_RegionaleLymfek lieren	2.16.840.1.113883.2.4.3.11.60.40.4.10.11	ypN1b(sn)
ypN1c	ypN1c	N_RegionaleLymfek lieren	2.16.840.1.113883.2.4.3.11.60.40.4.10.11	ypN1c
ypN1c(f)	ypN1c(f)	N_RegionaleLymfek lieren	2.16.840.1.113883.2.4.3.11.60.40.4.10.11	ypN1c(f)

ypN1c(sn)	ypN1c(sn)	N_RegionaleLymfeklieren	2.16.840.1.113883.2.4.3.11.60.40.4.10.11	ypN1c(sn)
ypN2	ypN2	N_RegionaleLymfeklieren	2.16.840.1.113883.2.4.3.11.60.40.4.10.11	ypN2
ypN2(f)	ypN2(f)	N_RegionaleLymfeklieren	2.16.840.1.113883.2.4.3.11.60.40.4.10.11	ypN2(f)
ypN2(sn)	ypN2(sn)	N_RegionaleLymfeklieren	2.16.840.1.113883.2.4.3.11.60.40.4.10.11	ypN2(sn)
ypN2a	ypN2a	N_RegionaleLymfeklieren	2.16.840.1.113883.2.4.3.11.60.40.4.10.11	ypN2a
ypN2a(f)	ypN2a(f)	N_RegionaleLymfeklieren	2.16.840.1.113883.2.4.3.11.60.40.4.10.11	ypN2a(f)
ypN2a(sn)	ypN2a(sn)	N_RegionaleLymfeklieren	2.16.840.1.113883.2.4.3.11.60.40.4.10.11	ypN2a(sn)
ypN2b	ypN2b	N_RegionaleLymfeklieren	2.16.840.1.113883.2.4.3.11.60.40.4.10.11	ypN2b
ypN2b(f)	ypN2b(f)	N_RegionaleLymfeklieren	2.16.840.1.113883.2.4.3.11.60.40.4.10.11	ypN2b(f)
ypN2b(sn)	ypN2b(sn)	N_RegionaleLymfeklieren	2.16.840.1.113883.2.4.3.11.60.40.4.10.11	ypN2b(sn)
ypN2c	ypN2c	N_RegionaleLymfeklieren	2.16.840.1.113883.2.4.3.11.60.40.4.10.11	ypN2c
ypN2c(f)	ypN2c(f)	N_RegionaleLymfeklieren	2.16.840.1.113883.2.4.3.11.60.40.4.10.11	ypN2c(f)
ypN2c(sn)	ypN2c(sn)	N_RegionaleLymfeklieren	2.16.840.1.113883.2.4.3.11.60.40.4.10.11	ypN2c(sn)
ypN3	ypN3	N_RegionaleLymfeklieren	2.16.840.1.113883.2.4.3.11.60.40.4.10.11	ypN3
ypN3(f)	ypN3(f)	N_RegionaleLymfeklieren	2.16.840.1.113883.2.4.3.11.60.40.4.10.11	ypN3(f)
ypN3(sn)	ypN3(sn)	N_RegionaleLymfeklieren	2.16.840.1.113883.2.4.3.11.60.40.4.10.11	ypN3(sn)
ypN3a	ypN3a	N_RegionaleLymfeklieren	2.16.840.1.113883.2.4.3.11.60.40.4.10.11	ypN3a
ypN3a(f)	ypN3a(f)	N_RegionaleLymfeklieren	2.16.840.1.113883.2.4.3.11.60.40.4.10.11	ypN3a(f)
ypN3a(sn)	ypN3a(sn)	N_RegionaleLymfeklieren	2.16.840.1.113883.2.4.3.11.60.40.4.10.11	ypN3a(sn)
ypN3b	ypN3b	N_RegionaleLymfeklieren	2.16.840.1.113883.2.4.3.11.60.40.4.10.11	ypN3b
ypN3b(f)	ypN3b(f)	N_RegionaleLymfeklieren	2.16.840.1.113883.2.4.3.11.60.40.4.10.11	ypN3b(f)
ypN3b(sn)	ypN3b(sn)	N_RegionaleLymfeklieren	2.16.840.1.113883.2.4.3.11.60.40.4.10.11	ypN3b(sn)
ypN3c	ypN3c	N_RegionaleLymfeklieren	2.16.840.1.113883.2.4.3.11.60.40.4.10.11	ypN3c
ypN3c(f)	ypN3c(f)	N_RegionaleLymfeklieren	2.16.840.1.113883.2.4.3.11.60.40.4.10.11	ypN3c(f)
ypN3c(sn)	ypN3c(sn)	N_RegionaleLymfeklieren	2.16.840.1.113883.2.4.3.11.60.40.4.10.11	ypN3c(sn)

<b>«document»</b>	<b>rcN_RegionalLymphnodesCodelist</b>	
<b>Definitie</b>	De uitbreiding naar regionale lymfeklieren (N) voor een klinische classificatie in geval van een recidiverende tumor (na een ziektevrij interval).	
<b>Datatype</b>		
<b>DCM::ValueSetBinding</b>	Extensible	

<b>DCM::ValueSetId</b>	2.16.840.1.113883.2.4.3.11.60.40.2.4.27.22	
<b>HCIM::ValueSetLanguage</b>	--	
<b>Opties</b>		

<b>rcN_RegionaleLymfeklierenCodelijst</b>	<b>OID: 2.16.840.1.113883.2.4.3.11.60.40.2.4.27.22</b>
---	--

<b>Concept Name</b>	<b>Concept Code</b>	<b>Coding System Name</b>	<b>Coding System OID</b>	<b>Description</b>
rcNX	rcNX	N_RegionaleLymfeklieren	2.16.840.1.113883.2.4.3.11.60.40.4.10.11	rcNX
rcNX(f)	rcNX(f)	N_RegionaleLymfeklieren	2.16.840.1.113883.2.4.3.11.60.40.4.10.11	rcNX(f)
rcNX(sn)	rcNX(sn)	N_RegionaleLymfeklieren	2.16.840.1.113883.2.4.3.11.60.40.4.10.11	rcNX(sn)
rcNO	rcNO	N_RegionaleLymfeklieren	2.16.840.1.113883.2.4.3.11.60.40.4.10.11	rcNO
rcNO(f)	rcNO(f)	N_RegionaleLymfeklieren	2.16.840.1.113883.2.4.3.11.60.40.4.10.11	rcNO(f)
rcNO(sn)	rcNO(sn)	N_RegionaleLymfeklieren	2.16.840.1.113883.2.4.3.11.60.40.4.10.11	rcNO(sn)
rcNO(i-)	rcNO(i-)	N_RegionaleLymfeklieren	2.16.840.1.113883.2.4.3.11.60.40.4.10.11	rcNO(i-)
rcNO(i-)(sn)	rcNO(i-)(sn)	N_RegionaleLymfeklieren	2.16.840.1.113883.2.4.3.11.60.40.4.10.11	rcNO(i-)(sn)
rcNO(i+)	rcNO(i+)	N_RegionaleLymfeklieren	2.16.840.1.113883.2.4.3.11.60.40.4.10.11	rcNO(i+)
rcNO(i+)(sn)	rcNO(i+)(sn)	N_RegionaleLymfeklieren	2.16.840.1.113883.2.4.3.11.60.40.4.10.11	rcNO(i+)(sn)
rcNO(mol-)	rcNO(mol-)	N_RegionaleLymfeklieren	2.16.840.1.113883.2.4.3.11.60.40.4.10.11	rcNO(mol-)
rcNO(mol-)(sn)	rcNO(mol-)(sn)	N_RegionaleLymfeklieren	2.16.840.1.113883.2.4.3.11.60.40.4.10.11	rcNO(mol-)(sn)
rcNO(mol+)	rcNO(mol+)	N_RegionaleLymfeklieren	2.16.840.1.113883.2.4.3.11.60.40.4.10.11	rcNO(mol+)
rcNO(mol+)(sn)	rcNO(mol+)(sn)	N_RegionaleLymfeklieren	2.16.840.1.113883.2.4.3.11.60.40.4.10.11	rcNO(mol+)(sn)
rcN1	rcN1	N_RegionaleLymfeklieren	2.16.840.1.113883.2.4.3.11.60.40.4.10.11	rcN1
rcN1(f)	rcN1(f)	N_RegionaleLymfeklieren	2.16.840.1.113883.2.4.3.11.60.40.4.10.11	rcN1(f)
rcN1(sn)	rcN1(sn)	N_RegionaleLymfeklieren	2.16.840.1.113883.2.4.3.11.60.40.4.10.11	rcN1(sn)
rcN1mi	rcN1mi	N_RegionaleLymfeklieren	2.16.840.1.113883.2.4.3.11.60.40.4.10.11	rcN1mi
rcN1mi(f)	rcN1mi(f)	N_RegionaleLymfeklieren	2.16.840.1.113883.2.4.3.11.60.40.4.10.11	rcN1mi(f)
rcN1mi(sn)	rcN1mi(sn)	N_RegionaleLymfeklieren	2.16.840.1.113883.2.4.3.11.60.40.4.10.11	rcN1mi(sn)
rcN1a	rcN1a	N_RegionaleLymfeklieren	2.16.840.1.113883.2.4.3.11.60.40.4.10.11	rcN1a
rcN1a(f)	rcN1a(f)	N_RegionaleLymfeklieren	2.16.840.1.113883.2.4.3.11.60.40.4.10.11	rcN1a(f)
rcN1a(sn)	rcN1a(sn)	N_RegionaleLymfeklieren	2.16.840.1.113883.2.4.3.11.60.40.4.10.11	rcN1a(sn)
rcN1b	rcN1b	N_RegionaleLymfeklieren	2.16.840.1.113883.2.4.3.11.60.40.4.10.11	rcN1b
rcN1b(f)	rcN1b(f)	N_RegionaleLymfeklieren	2.16.840.1.113883.2.4.3.11.60.40.4.10.11	rcN1b(f)

		lieren		
rcN1b(sn)	rcN1b(sn)	N_RegionaleLymfek lieren	2.16.840.1.113883.2.4.3.11.60.40.4.10.11	rcN1b(sn)
rcN1c	rcN1c	N_RegionaleLymfek lieren	2.16.840.1.113883.2.4.3.11.60.40.4.10.11	rcN1c
rcN1c(f)	rcN1c(f)	N_RegionaleLymfek lieren	2.16.840.1.113883.2.4.3.11.60.40.4.10.11	rcN1c(f)
rcN1c(sn)	rcN1c(sn)	N_RegionaleLymfek lieren	2.16.840.1.113883.2.4.3.11.60.40.4.10.11	rcN1c(sn)
rcN2	rcN2	N_RegionaleLymfek lieren	2.16.840.1.113883.2.4.3.11.60.40.4.10.11	rcN2
rcN2(f)	rcN2(f)	N_RegionaleLymfek lieren	2.16.840.1.113883.2.4.3.11.60.40.4.10.11	rcN2(f)
rcN2(sn)	rcN2(sn)	N_RegionaleLymfek lieren	2.16.840.1.113883.2.4.3.11.60.40.4.10.11	rcN2(sn)
rcN2a	rcN2a	N_RegionaleLymfek lieren	2.16.840.1.113883.2.4.3.11.60.40.4.10.11	rcN2a
rcN2a(f)	rcN2a(f)	N_RegionaleLymfek lieren	2.16.840.1.113883.2.4.3.11.60.40.4.10.11	rcN2a(f)
rcN2a(sn)	rcN2a(sn)	N_RegionaleLymfek lieren	2.16.840.1.113883.2.4.3.11.60.40.4.10.11	rcN2a(sn)
rcN2b	rcN2b	N_RegionaleLymfek lieren	2.16.840.1.113883.2.4.3.11.60.40.4.10.11	rcN2b
rcN2b(f)	rcN2b(f)	N_RegionaleLymfek lieren	2.16.840.1.113883.2.4.3.11.60.40.4.10.11	rcN2b(f)
rcN2b(sn)	rcN2b(sn)	N_RegionaleLymfek lieren	2.16.840.1.113883.2.4.3.11.60.40.4.10.11	rcN2b(sn)
rcN2c	rcN2c	N_RegionaleLymfek lieren	2.16.840.1.113883.2.4.3.11.60.40.4.10.11	rcN2c
rcN2c(f)	rcN2c(f)	N_RegionaleLymfek lieren	2.16.840.1.113883.2.4.3.11.60.40.4.10.11	rcN2c(f)
rcN2c(sn)	rcN2c(sn)	N_RegionaleLymfek lieren	2.16.840.1.113883.2.4.3.11.60.40.4.10.11	rcN2c(sn)
rcN3	rcN3	N_RegionaleLymfek lieren	2.16.840.1.113883.2.4.3.11.60.40.4.10.11	rcN3
rcN3(f)	rcN3(f)	N_RegionaleLymfek lieren	2.16.840.1.113883.2.4.3.11.60.40.4.10.11	rcN3(f)
rcN3(sn)	rcN3(sn)	N_RegionaleLymfek lieren	2.16.840.1.113883.2.4.3.11.60.40.4.10.11	rcN3(sn)
rcN3a	rcN3a	N_RegionaleLymfek lieren	2.16.840.1.113883.2.4.3.11.60.40.4.10.11	rcN3a
rcN3a(f)	rcN3a(f)	N_RegionaleLymfek lieren	2.16.840.1.113883.2.4.3.11.60.40.4.10.11	rcN3a(f)
rcN3a(sn)	rcN3a(sn)	N_RegionaleLymfek lieren	2.16.840.1.113883.2.4.3.11.60.40.4.10.11	rcN3a(sn)
rcN3b	rcN3b	N_RegionaleLymfek lieren	2.16.840.1.113883.2.4.3.11.60.40.4.10.11	rcN3b
rcN3b(f)	rcN3b(f)	N_RegionaleLymfek lieren	2.16.840.1.113883.2.4.3.11.60.40.4.10.11	rcN3b(f)
rcN3b(sn)	rcN3b(sn)	N_RegionaleLymfek lieren	2.16.840.1.113883.2.4.3.11.60.40.4.10.11	rcN3b(sn)
rcN3c	rcN3c	N_RegionaleLymfek lieren	2.16.840.1.113883.2.4.3.11.60.40.4.10.11	rcN3c
rcN3c(f)	rcN3c(f)	N_RegionaleLymfek lieren	2.16.840.1.113883.2.4.3.11.60.40.4.10.11	rcN3c(f)
rcN3c(sn)	rcN3c(sn)	N_RegionaleLymfek lieren	2.16.840.1.113883.2.4.3.11.60.40.4.10.11	rcN3c(sn)

<b>«document»</b>	<b>rpN_RegionalLymphnodesCodelist</b>	
<b>Definitie</b>	De uitbreiding naar regionale lymfeklieren (N) voor een postchirurgische pathologische classificatie in geval van een recidiverende tumor (na een ziektevrij interval).	
<b>Datatype</b>		
<b>DCM::ValueSetBinding</b>	Extensible	
<b>DCM::ValueSetId</b>	2.16.840.1.113883.2.4.3.11.60.40.2.4.27.23	
<b>HCIM::ValueSetLanguage</b>	--	
<b>Opties</b>		

<b>rpN_RegionaleLymfeklierenCodelist</b>	<b>OID: 2.16.840.1.113883.2.4.3.11.60.40.2.4.27.23</b>
--	--

<b>Concept Name</b>	<b>Concept Code</b>	<b>Coding System Name</b>	<b>Coding System OID</b>	<b>Description</b>
rpNX	rpNX	N_RegionaleLymfeklieren	2.16.840.1.113883.2.4.3.11.60.40.4.10.11	rpNX
rpNX(f)	rpNX(f)	N_RegionaleLymfeklieren	2.16.840.1.113883.2.4.3.11.60.40.4.10.11	rpNX(f)
rpNX(sn)	rpNX(sn)	N_RegionaleLymfeklieren	2.16.840.1.113883.2.4.3.11.60.40.4.10.11	rpNX(sn)
rpNO	rpNO	N_RegionaleLymfeklieren	2.16.840.1.113883.2.4.3.11.60.40.4.10.11	rpNO
rpNO(f)	rpNO(f)	N_RegionaleLymfeklieren	2.16.840.1.113883.2.4.3.11.60.40.4.10.11	rpNO(f)
rpNO(sn)	rpNO(sn)	N_RegionaleLymfeklieren	2.16.840.1.113883.2.4.3.11.60.40.4.10.11	rpNO(sn)
rpNO(i-)	rpNO(i-)	N_RegionaleLymfeklieren	2.16.840.1.113883.2.4.3.11.60.40.4.10.11	rpNO(i-)
rpNO(i-)(sn)	rpNO(i-)(sn)	N_RegionaleLymfeklieren	2.16.840.1.113883.2.4.3.11.60.40.4.10.11	rpNO(i-)(sn)
rpNO(i+)	rpNO(i+)	N_RegionaleLymfeklieren	2.16.840.1.113883.2.4.3.11.60.40.4.10.11	rpNO(i+)
rpNO(i+)(sn)	rpNO(i+)(sn)	N_RegionaleLymfeklieren	2.16.840.1.113883.2.4.3.11.60.40.4.10.11	rpNO(i+)(sn)
rpNO(mol-)	rpNO(mol-)	N_RegionaleLymfeklieren	2.16.840.1.113883.2.4.3.11.60.40.4.10.11	rpNO(mol-)
rpNO(mol-)(sn)	rpNO(mol-)(sn)	N_RegionaleLymfeklieren	2.16.840.1.113883.2.4.3.11.60.40.4.10.11	rpNO(mol-)(sn)
rpNO(mol+)	rpNO(mol+)	N_RegionaleLymfeklieren	2.16.840.1.113883.2.4.3.11.60.40.4.10.11	rpNO(mol+)
rpNO(mol+)(sn)	rpNO(mol+)(sn)	N_RegionaleLymfeklieren	2.16.840.1.113883.2.4.3.11.60.40.4.10.11	rpNO(mol+)(sn)
rpN1	rpN1	N_RegionaleLymfeklieren	2.16.840.1.113883.2.4.3.11.60.40.4.10.11	rpN1
rpN1(f)	rpN1(f)	N_RegionaleLymfeklieren	2.16.840.1.113883.2.4.3.11.60.40.4.10.11	rpN1(f)
rpN1(sn)	rpN1(sn)	N_RegionaleLymfeklieren	2.16.840.1.113883.2.4.3.11.60.40.4.10.11	rpN1(sn)
rpN1mi	rpN1mi	N_RegionaleLymfeklieren	2.16.840.1.113883.2.4.3.11.60.40.4.10.11	rpN1mi
rpN1mi(f)	rpN1mi(f)	N_RegionaleLymfeklieren	2.16.840.1.113883.2.4.3.11.60.40.4.10.11	rpN1mi(f)
rpN1mi(sn)	rpN1mi(sn)	N_RegionaleLymfeklieren	2.16.840.1.113883.2.4.3.11.60.40.4.10.11	rpN1mi(sn)

		lieren		
rpN1a	rpN1a	N_RegionaleLymfek lieren	2.16.840.1.113883.2.4.3.11.60.40.4.10.11	rpN1a
rpN1a(f)	rpN1a(f)	N_RegionaleLymfek lieren	2.16.840.1.113883.2.4.3.11.60.40.4.10.11	rpN1a(f)
rpN1a(sn)	rpN1a(sn)	N_RegionaleLymfek lieren	2.16.840.1.113883.2.4.3.11.60.40.4.10.11	rpN1a(sn)
rpN1b	rpN1b	N_RegionaleLymfek lieren	2.16.840.1.113883.2.4.3.11.60.40.4.10.11	rpN1b
rpN1b(f)	rpN1b(f)	N_RegionaleLymfek lieren	2.16.840.1.113883.2.4.3.11.60.40.4.10.11	rpN1b(f)
rpN1b(sn)	rpN1b(sn)	N_RegionaleLymfek lieren	2.16.840.1.113883.2.4.3.11.60.40.4.10.11	rpN1b(sn)
rpN1c	rpN1c	N_RegionaleLymfek lieren	2.16.840.1.113883.2.4.3.11.60.40.4.10.11	rpN1c
rpN1c(f)	rpN1c(f)	N_RegionaleLymfek lieren	2.16.840.1.113883.2.4.3.11.60.40.4.10.11	rpN1c(f)
rpN1c(sn)	rpN1c(sn)	N_RegionaleLymfek lieren	2.16.840.1.113883.2.4.3.11.60.40.4.10.11	rpN1c(sn)
rpN2	rpN2	N_RegionaleLymfek lieren	2.16.840.1.113883.2.4.3.11.60.40.4.10.11	rpN2
rpN2(f)	rpN2(f)	N_RegionaleLymfek lieren	2.16.840.1.113883.2.4.3.11.60.40.4.10.11	rpN2(f)
rpN2(sn)	rpN2(sn)	N_RegionaleLymfek lieren	2.16.840.1.113883.2.4.3.11.60.40.4.10.11	rpN2(sn)
rpN2a	rpN2a	N_RegionaleLymfek lieren	2.16.840.1.113883.2.4.3.11.60.40.4.10.11	rpN2a
rpN2a(f)	rpN2a(f)	N_RegionaleLymfek lieren	2.16.840.1.113883.2.4.3.11.60.40.4.10.11	rpN2a(f)
rpN2a(sn)	rpN2a(sn)	N_RegionaleLymfek lieren	2.16.840.1.113883.2.4.3.11.60.40.4.10.11	rpN2a(sn)
rpN2b	rpN2b	N_RegionaleLymfek lieren	2.16.840.1.113883.2.4.3.11.60.40.4.10.11	rpN2b
rpN2b(f)	rpN2b(f)	N_RegionaleLymfek lieren	2.16.840.1.113883.2.4.3.11.60.40.4.10.11	rpN2b(f)
rpN2b(sn)	rpN2b(sn)	N_RegionaleLymfek lieren	2.16.840.1.113883.2.4.3.11.60.40.4.10.11	rpN2b(sn)
rpN2c	rpN2c	N_RegionaleLymfek lieren	2.16.840.1.113883.2.4.3.11.60.40.4.10.11	rpN2c
rpN2c(f)	rpN2c(f)	N_RegionaleLymfek lieren	2.16.840.1.113883.2.4.3.11.60.40.4.10.11	rpN2c(f)
rpN2c(sn)	rpN2c(sn)	N_RegionaleLymfek lieren	2.16.840.1.113883.2.4.3.11.60.40.4.10.11	rpN2c(sn)
rpN3	rpN3	N_RegionaleLymfek lieren	2.16.840.1.113883.2.4.3.11.60.40.4.10.11	rpN3
rpN3(f)	rpN3(f)	N_RegionaleLymfek lieren	2.16.840.1.113883.2.4.3.11.60.40.4.10.11	rpN3(f)
rpN3(sn)	rpN3(sn)	N_RegionaleLymfek lieren	2.16.840.1.113883.2.4.3.11.60.40.4.10.11	rpN3(sn)
rpN3a	rpN3a	N_RegionaleLymfek lieren	2.16.840.1.113883.2.4.3.11.60.40.4.10.11	rpN3a
rpN3a(f)	rpN3a(f)	N_RegionaleLymfek lieren	2.16.840.1.113883.2.4.3.11.60.40.4.10.11	rpN3a(f)
rpN3a(sn)	rpN3a(sn)	N_RegionaleLymfek lieren	2.16.840.1.113883.2.4.3.11.60.40.4.10.11	rpN3a(sn)
rpN3b	rpN3b	N_RegionaleLymfek lieren	2.16.840.1.113883.2.4.3.11.60.40.4.10.11	rpN3b
rpN3b(f)	rpN3b(f)	N_RegionaleLymfek	2.16.840.1.113883.2.4.3.11.60.40.4.10.11	rpN3b(f)



		lieren		
rpN3b(sn)	rpN3b(sn)	N_RegionaleLymfek lieren	2.16.840.1.113883.2.4.3.11.60.40.4.10.11	rpN3b(sn)
rpN3c	rpN3c	N_RegionaleLymfek lieren	2.16.840.1.113883.2.4.3.11.60.40.4.10.11	rpN3c
rpN3c(f)	rpN3c(f)	N_RegionaleLymfek lieren	2.16.840.1.113883.2.4.3.11.60.40.4.10.11	rpN3c(f)
rpN3c(sn)	rpN3c(sn)	N_RegionaleLymfek lieren	2.16.840.1.113883.2.4.3.11.60.40.4.10.11	rpN3c(sn)

«document»	aN_RegionalLymphnodesCodelist	
<b>Definitie</b>	De regionale lymfeklieren (N) voor een classificatie vastgesteld tijdens autopsie	
<b>Datatype</b>		
<b>DCM::ValueSetBinding</b>	Extensible	
<b>DCM::ValueSetId</b>	2.16.840.1.113883.2.4.3.11.60.40.2.4.27.24	
<b>HCIM::ValueSetLanguage</b>	--	
<b>Opties</b>		

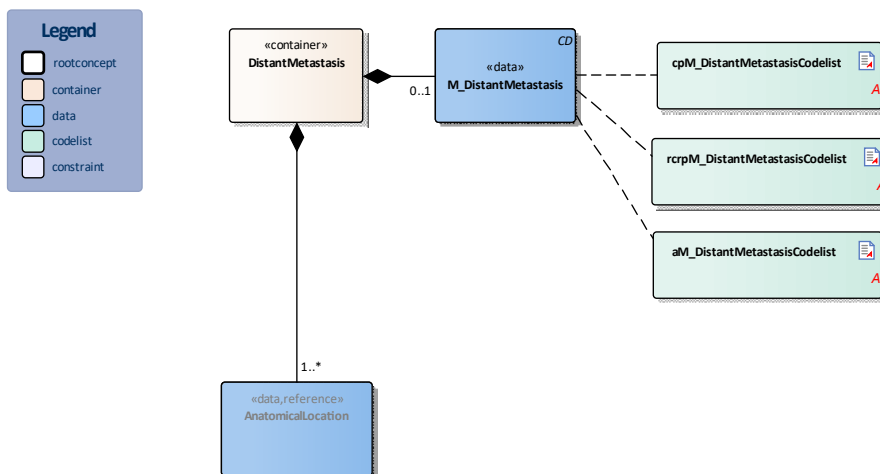
aN_RegionaleLymfeklierenCodelijst			OID: 2.16.840.1.113883.2.4.3.11.60.40.2.4.27.24	
Concept Name	Concept Code	Coding System Name	Coding System OID	Description
aNX	aNX	N_RegionaleLymfek lieren	2.16.840.1.113883.2.4.3.11.60.40.4.10.11	aNX
aNX(f)	aNX(f)	N_RegionaleLymfek lieren	2.16.840.1.113883.2.4.3.11.60.40.4.10.11	aNX(f)
aNX(sn)	aNX(sn)	N_RegionaleLymfek lieren	2.16.840.1.113883.2.4.3.11.60.40.4.10.11	aNX(sn)
aNO	aNO	N_RegionaleLymfek lieren	2.16.840.1.113883.2.4.3.11.60.40.4.10.11	aNO
aNO(f)	aNO(f)	N_RegionaleLymfek lieren	2.16.840.1.113883.2.4.3.11.60.40.4.10.11	aNO(f)
aNO(sn)	aNO(sn)	N_RegionaleLymfek lieren	2.16.840.1.113883.2.4.3.11.60.40.4.10.11	aNO(sn)
aNO(i-)	aNO(i-)	N_RegionaleLymfek lieren	2.16.840.1.113883.2.4.3.11.60.40.4.10.11	aNO(i-)
aNO(i-)(sn)	aNO(i-)(sn)	N_RegionaleLymfek lieren	2.16.840.1.113883.2.4.3.11.60.40.4.10.11	aNO(i-)(sn)
aNO(i+)	aNO(i+)	N_RegionaleLymfek lieren	2.16.840.1.113883.2.4.3.11.60.40.4.10.11	aNO(i+)
aNO(i+)(sn)	aNO(i+)(sn)	N_RegionaleLymfek lieren	2.16.840.1.113883.2.4.3.11.60.40.4.10.11	aNO(i+)(sn)
aNO(mol-)	aNO(mol-)	N_RegionaleLymfek lieren	2.16.840.1.113883.2.4.3.11.60.40.4.10.11	aNO(mol-)
aNO(mol-)(sn)	aNO(mol-)(sn)	N_RegionaleLymfek lieren	2.16.840.1.113883.2.4.3.11.60.40.4.10.11	aNO(mol-)(sn)
aNO(mol+)	aNO(mol+)	N_RegionaleLymfek lieren	2.16.840.1.113883.2.4.3.11.60.40.4.10.11	aNO(mol+)
aNO(mol+)(sn)	aNO(mol+)(sn)	N_RegionaleLymfek lieren	2.16.840.1.113883.2.4.3.11.60.40.4.10.11	aNO(mol+)(sn)
aN1	aN1	N_RegionaleLymfek lieren	2.16.840.1.113883.2.4.3.11.60.40.4.10.11	aN1
aN1(f)	aN1(f)	N_RegionaleLymfek lieren	2.16.840.1.113883.2.4.3.11.60.40.4.10.11	aN1(f)

aN1(sn)	aN1(sn)	N_RegionaleLymfek lieren	2.16.840.1.113883.2.4.3.11.60.40.4.10.11	aN1(sn)
aN1mi	aN1mi	N_RegionaleLymfek lieren	2.16.840.1.113883.2.4.3.11.60.40.4.10.11	aN1mi
aN1mi(f)	aN1mi(f)	N_RegionaleLymfek lieren	2.16.840.1.113883.2.4.3.11.60.40.4.10.11	aN1mi(f)
aN1mi(sn)	aN1mi(sn)	N_RegionaleLymfek lieren	2.16.840.1.113883.2.4.3.11.60.40.4.10.11	aN1mi(sn)
aN1a	aN1a	N_RegionaleLymfek lieren	2.16.840.1.113883.2.4.3.11.60.40.4.10.11	aN1a
aN1a(f)	aN1a(f)	N_RegionaleLymfek lieren	2.16.840.1.113883.2.4.3.11.60.40.4.10.11	aN1a(f)
aN1a(sn)	aN1a(sn)	N_RegionaleLymfek lieren	2.16.840.1.113883.2.4.3.11.60.40.4.10.11	aN1a(sn)
aN1b	aN1b	N_RegionaleLymfek lieren	2.16.840.1.113883.2.4.3.11.60.40.4.10.11	aN1b
aN1b(f)	aN1b(f)	N_RegionaleLymfek lieren	2.16.840.1.113883.2.4.3.11.60.40.4.10.11	aN1b(f)
aN1b(sn)	aN1b(sn)	N_RegionaleLymfek lieren	2.16.840.1.113883.2.4.3.11.60.40.4.10.11	aN1b(sn)
aN1c	aN1c	N_RegionaleLymfek lieren	2.16.840.1.113883.2.4.3.11.60.40.4.10.11	aN1c
aN1c(f)	aN1c(f)	N_RegionaleLymfek lieren	2.16.840.1.113883.2.4.3.11.60.40.4.10.11	aN1c(f)
aN1c(sn)	aN1c(sn)	N_RegionaleLymfek lieren	2.16.840.1.113883.2.4.3.11.60.40.4.10.11	aN1c(sn)
aN2	aN2	N_RegionaleLymfek lieren	2.16.840.1.113883.2.4.3.11.60.40.4.10.11	aN2
aN2(f)	aN2(f)	N_RegionaleLymfek lieren	2.16.840.1.113883.2.4.3.11.60.40.4.10.11	aN2(f)
aN2(sn)	aN2(sn)	N_RegionaleLymfek lieren	2.16.840.1.113883.2.4.3.11.60.40.4.10.11	aN2(sn)
aN2a	aN2a	N_RegionaleLymfek lieren	2.16.840.1.113883.2.4.3.11.60.40.4.10.11	aN2a
aN2a(f)	aN2a(f)	N_RegionaleLymfek lieren	2.16.840.1.113883.2.4.3.11.60.40.4.10.11	aN2a(f)
aN2a(sn)	aN2a(sn)	N_RegionaleLymfek lieren	2.16.840.1.113883.2.4.3.11.60.40.4.10.11	aN2a(sn)
aN2b	aN2b	N_RegionaleLymfek lieren	2.16.840.1.113883.2.4.3.11.60.40.4.10.11	aN2b
aN2b(f)	aN2b(f)	N_RegionaleLymfek lieren	2.16.840.1.113883.2.4.3.11.60.40.4.10.11	aN2b(f)
aN2b(sn)	aN2b(sn)	N_RegionaleLymfek lieren	2.16.840.1.113883.2.4.3.11.60.40.4.10.11	aN2b(sn)
aN2c	aN2c	N_RegionaleLymfek lieren	2.16.840.1.113883.2.4.3.11.60.40.4.10.11	aN2c
aN2c(f)	aN2c(f)	N_RegionaleLymfek lieren	2.16.840.1.113883.2.4.3.11.60.40.4.10.11	aN2c(f)
aN2c(sn)	aN2c(sn)	N_RegionaleLymfek lieren	2.16.840.1.113883.2.4.3.11.60.40.4.10.11	aN2c(sn)
aN3	aN3	N_RegionaleLymfek lieren	2.16.840.1.113883.2.4.3.11.60.40.4.10.11	aN3
aN3(f)	aN3(f)	N_RegionaleLymfek lieren	2.16.840.1.113883.2.4.3.11.60.40.4.10.11	aN3(f)
aN3(sn)	aN3(sn)	N_RegionaleLymfek lieren	2.16.840.1.113883.2.4.3.11.60.40.4.10.11	aN3(sn)
aN3a	aN3a	N_RegionaleLymfek lieren	2.16.840.1.113883.2.4.3.11.60.40.4.10.11	aN3a

aN3a(f)	aN3a(f)	N_RegionaleLymfek lieren	2.16.840.1.113883.2.4.3.11.60.40.4.10.11	aN3a(f)
aN3a(sn)	aN3a(sn)	N_RegionaleLymfek lieren	2.16.840.1.113883.2.4.3.11.60.40.4.10.11	aN3a(sn)
aN3b	aN3b	N_RegionaleLymfek lieren	2.16.840.1.113883.2.4.3.11.60.40.4.10.11	aN3b
aN3b(f)	aN3b(f)	N_RegionaleLymfek lieren	2.16.840.1.113883.2.4.3.11.60.40.4.10.11	aN3b(f)
aN3b(sn)	aN3b(sn)	N_RegionaleLymfek lieren	2.16.840.1.113883.2.4.3.11.60.40.4.10.11	aN3b(sn)
aN3c	aN3c	N_RegionaleLymfek lieren	2.16.840.1.113883.2.4.3.11.60.40.4.10.11	aN3c
aN3c(f)	aN3c(f)	N_RegionaleLymfek lieren	2.16.840.1.113883.2.4.3.11.60.40.4.10.11	aN3c(f)
aN3c(sn)	aN3c(sn)	N_RegionaleLymfek lieren	2.16.840.1.113883.2.4.3.11.60.40.4.10.11	aN3c(sn)

Legend	
<b>Definitie</b>	
<b>Datatype</b>	
<b>Opties</b>	

### 1.7.3 DistantMetastasis



«container»	DistantMetastasis	
<b>Definitie</b>	Container of the DistantMetastasis concept. This container contains all data elements of the DistantMetastasis concept.	
<b>Datatype</b>		
<b>DCM::ConceptId</b>	NL-CM:4.27.25	
<b>DCM::DefinitionCode</b>	SNOMED CT: 385380006 Metastasis category finding	
<b>Opties</b>		

«data»	M_DistantMetastasis	
<b>Definitie</b>	Staging result of the presence or absence of distant metastasis, the M-category of the TNM classification. 	

<b>Datatype</b>		
<b>DCM::ConceptId</b>	NL-CM:4.27.26	
<b>DCM::DefinitionCode</b>	SNOMED CT: 277208005 M category	
<b>DCM::ValueSet</b>	aM_DistantMetastasisCodeList	OID: 2.16.840.1.113883.2.4.3.11.60.40.2.4.27.25
<b>DCM::ValueSet</b>	rcrpM_DistantMetastasisCodeList	OID: 2.16.840.1.113883.2.4.3.11.60.40.2.4.27.27
<b>DCM::ValueSet</b>	cpM_DistantMetastasisCodeList	OID: 2.16.840.1.113883.2.4.3.11.60.40.2.4.27.28
<b>Opties</b>		

<b>«data»</b>	<b>AnatomicalLocation</b>	
<b>Definitie</b>	Contains the localization(s) of distant metastasis, caused by the primary tumor.	
<b>Datatype</b>		
<b>DCM::ConceptId</b>	NL-CM:4.27.28	
<b>DCM::DefinitionCode</b>	SNOMED CT: 385421009 Site of distant metastasis	
<b>DCM::ReferencedConceptId</b>	NL-CM:20.7.1	This is a reference to the rootconcept of information model AnatomicalLocation.
<b>Opties</b>		

<b>«document»</b>	<b>aM_DistantMetastasisCodeList</b>	
<b>Definitie</b>	De uitbreiding naar metastase op afstand voor een classificatie vastgesteld tijdens autopsie.	
<b>Datatype</b>		
<b>DCM::ValueSetBinding</b>	Extensible	
<b>DCM::ValueSetId</b>	2.16.840.1.113883.2.4.3.11.60.40.2.4.27.25	
<b>HCIM::ValueSetLanguage</b>	--	
<b>Opties</b>		

<b>aM_AfstandsMetastasenCodeLijst</b>			<b>OID: 2.16.840.1.113883.2.4.3.11.60.40.2.4.27.25</b>	
Concept Name	Concept Code	Coding System Name	Coding System OID	Description
aM0	aM0	M_Afstandsmetastase	2.16.840.1.113883.2.4.3.11.60.40.4.10.3	aM0
aM0(i+)	aM0(i+)	M_Afstandsmetastase	2.16.840.1.113883.2.4.3.11.60.40.4.10.3	aM0(i+)
aM0(mol+)	aM0(mol+)	M_Afstandsmetastase	2.16.840.1.113883.2.4.3.11.60.40.4.10.3	aM0(mol+)
aM1	aM1	M_Afstandsmetastase	2.16.840.1.113883.2.4.3.11.60.40.4.10.3	aM1
aM1a	aM1a	M_Afstandsmetastase	2.16.840.1.113883.2.4.3.11.60.40.4.10.3	aM1a
aM1a(0)	aM1a(0)	M_Afstandsmetastase	2.16.840.1.113883.2.4.3.11.60.40.4.10.3	aM1a(0)
aM1a(1)	aM1a(1)	M_Afstandsmetastase	2.16.840.1.113883.2.4.3.11.60.40.4.10.3	aM1a(1)
aM1b	aM1b	M_Afstandsmetastase	2.16.840.1.113883.2.4.3.11.60.40.4.10.3	aM1b
aM1b(0)	aM1b(0)	M_Afstandsmetastase	2.16.840.1.113883.2.4.3.11.60.40.4.10.3	aM1b(0)
aM1b(1)	aM1b(1)	M_Afstandsmetastase	2.16.840.1.113883.2.4.3.11.60.40.4.10.3	aM1b(1)
aM1c	aM1c	M_Afstandsmetastase	2.16.840.1.113883.2.4.3.11.60.40.4.10.3	aM1c
aM1c(0)	aM1c(0)	M_Afstandsmetastase	2.16.840.1.113883.2.4.3.11.60.40.4.10.3	aM1c(0)
aM1c(1)	aM1c(1)	M_Afstandsmetastase	2.16.840.1.113883.2.4.3.11.60.40.4.10.3	aM1c(1)
aM1d	aM1d	M_Afstandsmetastase	2.16.840.1.113883.2.4.3.11.60.40.4.10.3	aM1d
aM1d(0)	aM1d(0)	M_Afstandsmetastase	2.16.840.1.113883.2.4.3.11.60.40.4.10.3	aM1d(0)
aM1d(1)	aM1d(1)	M_Afstandsmetastase	2.16.840.1.113883.2.4.3.11.60.40.4.10.3	aM1d(1)

<b>«document»</b>	<b>cpM_DistantMetastasisCodelist</b>	
<b>Definitie</b>	De uitbreiding naar metastase op afstand (M) voor een klinische of postchirurgische histologische pathologische classificatie.	
<b>Datatype</b>		
<b>DCM::ValueSetBinding</b>	Extensible	
<b>DCM::ValueSetId</b>	2.16.840.1.113883.2.4.3.11.60.40.2.4.27.28	
<b>HCIM::ValueSetLanguage</b>	--	
<b>Opties</b>		

<b>cpM_AfstandsMetastasenCodelijst</b>	<b>OID: 2.16.840.1.113883.2.4.3.11.60.40.2.4.27.28</b>
--	--

<b>Concept Name</b>	<b>Concept Code</b>	<b>Coding System Name</b>	<b>Coding System OID</b>	<b>Description</b>
cM0	cM0	M_Afstands metastase	2.16.840.1.113883.2.4.3.11.60.40.4.10.3	cM0
cM0(i+)	cM0(i+)	M_Afstands metastase	2.16.840.1.113883.2.4.3.11.60.40.4.10.3	cM0(i+)
cM0(mol+)	cM0(mol+)	M_Afstands metastase	2.16.840.1.113883.2.4.3.11.60.40.4.10.3	cM0(mol+)
cM1	cM1	M_Afstands metastase	2.16.840.1.113883.2.4.3.11.60.40.4.10.3	cM1
cM1a	cM1a	M_Afstands metastase	2.16.840.1.113883.2.4.3.11.60.40.4.10.3	cM1a
cM1a(0)	cM1a(0)	M_Afstands metastase	2.16.840.1.113883.2.4.3.11.60.40.4.10.3	cM1a(0)
cM1a(1)	cM1a(1)	M_Afstands metastase	2.16.840.1.113883.2.4.3.11.60.40.4.10.3	cM1a(1)
cM1b	cM1b	M_Afstands metastase	2.16.840.1.113883.2.4.3.11.60.40.4.10.3	cM1b
cM1b(0)	cM1b(0)	M_Afstands metastase	2.16.840.1.113883.2.4.3.11.60.40.4.10.3	cM1b(0)
cM1b(1)	cM1b(1)	M_Afstands metastase	2.16.840.1.113883.2.4.3.11.60.40.4.10.3	cM1b(1)
cM1c	cM1c	M_Afstands metastase	2.16.840.1.113883.2.4.3.11.60.40.4.10.3	cM1c
cM1c(0)	cM1c(0)	M_Afstands metastase	2.16.840.1.113883.2.4.3.11.60.40.4.10.3	cM1c(0)
cM1c(1)	cM1c(1)	M_Afstands metastase	2.16.840.1.113883.2.4.3.11.60.40.4.10.3	cM1c(1)
cM1d	cM1d	M_Afstands metastase	2.16.840.1.113883.2.4.3.11.60.40.4.10.3	cM1d
cM1d(0)	cM1d(0)	M_Afstands metastase	2.16.840.1.113883.2.4.3.11.60.40.4.10.3	cM1d(0)
cM1d(1)	cM1d(1)	M_Afstands metastase	2.16.840.1.113883.2.4.3.11.60.40.4.10.3	cM1d(1)
pM1	pM1	M_Afstands metastase	2.16.840.1.113883.2.4.3.11.60.40.4.10.3	pM1
pM1a	pM1a	M_Afstands metastase	2.16.840.1.113883.2.4.3.11.60.40.4.10.3	pM1a
pM1a(0)	pM1a(0)	M_Afstands metastase	2.16.840.1.113883.2.4.3.11.60.40.4.10.3	pM1a(0)
pM1a(1)	pM1a(1)	M_Afstands	2.16.840.1.113883.2.4.3.11.60.40.4.10.3	pM1a(1)

		metastase		
pM1b	pM1b	M_Afstands metastase	2.16.840.1.113883.2.4.3.11.60.40.4.10.3	pM1b
pM1b(0)	pM1b(0)	M_Afstands metastase	2.16.840.1.113883.2.4.3.11.60.40.4.10.3	pM1b(0)
pM1b(1)	pM1b(1)	M_Afstands metastase	2.16.840.1.113883.2.4.3.11.60.40.4.10.3	pM1b(1)
pM1c	pM1c	M_Afstands metastase	2.16.840.1.113883.2.4.3.11.60.40.4.10.3	pM1c
pM1c(0)	pM1c(0)	M_Afstands metastase	2.16.840.1.113883.2.4.3.11.60.40.4.10.3	pM1c(0)
pM1c(1)	pM1c(1)	M_Afstands metastase	2.16.840.1.113883.2.4.3.11.60.40.4.10.3	pM1c(1)
pM1d	pM1d	M_Afstands metastase	2.16.840.1.113883.2.4.3.11.60.40.4.10.3	pM1d
pM1d(0)	pM1d(0)	M_Afstands metastase	2.16.840.1.113883.2.4.3.11.60.40.4.10.3	pM1d(0)
pM1d(1)	pM1d(1)	M_Afstands metastase	2.16.840.1.113883.2.4.3.11.60.40.4.10.3	pM1d(1)

<b>«document»</b>	<b>rcrpM_DistantMetastasisCodelist</b>	
<b>Definitie</b>	De uitbreiding naar metastase op afstand (M) voor een klinische of postchirurgische histologische pathologische classificatie in geval van een recidiverende tumor (na een ziektevrij interval).	
<b>Datatype</b>		
<b>DCM::ValueSetBinding</b>	Extensible	
<b>DCM::ValueSetId</b>	2.16.840.1.113883.2.4.3.11.60.40.2.4.27.27	
<b>HCIM::ValueSetLanguage</b>	--	
<b>Opties</b>		

<b>rcrpM_AfstandsMetastasenCodelijst</b>			<b>OID: 2.16.840.1.113883.2.4.3.11.60.40.2.4.27.27</b>	
<b>Concept Name</b>	<b>Concept Code</b>	<b>Coding System Name</b>	<b>Coding System OID</b>	<b>Description</b>
rcM0	rcM0	M_Afstands metastase	2.16.840.1.113883.2.4.3.11.60.40.4.10.3	rcM0
rcM0(i+)	rcM0(i+)	M_Afstands metastase	2.16.840.1.113883.2.4.3.11.60.40.4.10.3	rcM0(i+)
rcM0(mol+)	rcM0(mol+)	M_Afstands metastase	2.16.840.1.113883.2.4.3.11.60.40.4.10.3	rcM0(mol+)
rcM1	rcM1	M_Afstands metastase	2.16.840.1.113883.2.4.3.11.60.40.4.10.3	rcM1
rcM1a	rcM1a	M_Afstands metastase	2.16.840.1.113883.2.4.3.11.60.40.4.10.3	rcM1a
rcM1a(0)	rcM1a(0)	M_Afstands metastase	2.16.840.1.113883.2.4.3.11.60.40.4.10.3	rcM1a(0)
rcM1a(1)	rcM1a(1)	M_Afstands metastase	2.16.840.1.113883.2.4.3.11.60.40.4.10.3	rcM1a(1)
rcM1b	rcM1b	M_Afstands metastase	2.16.840.1.113883.2.4.3.11.60.40.4.10.3	rcM1b
rcM1b(0)	rcM1b(0)	M_Afstands metastase	2.16.840.1.113883.2.4.3.11.60.40.4.10.3	rcM1b(0)

rcM1b(1)	rcM1b(1)	M_Afstands metastase	2.16.840.1.113883.2.4.3.11.60.40.4.10.3	rcM1b(1)
rcM1c	rcM1c	M_Afstands metastase	2.16.840.1.113883.2.4.3.11.60.40.4.10.3	rcM1c
rcM1c(0)	rcM1c(0)	M_Afstands metastase	2.16.840.1.113883.2.4.3.11.60.40.4.10.3	rcM1c(0)
rcM1c(1)	rcM1c(1)	M_Afstands metastase	2.16.840.1.113883.2.4.3.11.60.40.4.10.3	rcM1c(1)
rcM1d	rcM1d	M_Afstands metastase	2.16.840.1.113883.2.4.3.11.60.40.4.10.3	rcM1d
rcM1d(0)	rcM1d(0)	M_Afstands metastase	2.16.840.1.113883.2.4.3.11.60.40.4.10.3	rcM1d(0)
rcM1d(1)	rcM1d(1)	M_Afstands metastase	2.16.840.1.113883.2.4.3.11.60.40.4.10.3	rcM1d(1)
rpM1	rpM1	M_Afstands metastase	2.16.840.1.113883.2.4.3.11.60.40.4.10.3	rpM1
rpM1a	rpM1a	M_Afstands metastase	2.16.840.1.113883.2.4.3.11.60.40.4.10.3	rpM1a
rpM1a(0)	rpM1a(0)	M_Afstands metastase	2.16.840.1.113883.2.4.3.11.60.40.4.10.3	rpM1a(0)
rpM1a(1)	rpM1a(1)	M_Afstands metastase	2.16.840.1.113883.2.4.3.11.60.40.4.10.3	rpM1a(1)
rpM1b	rpM1b	M_Afstands metastase	2.16.840.1.113883.2.4.3.11.60.40.4.10.3	rpM1b
rpM1b(0)	rpM1b(0)	M_Afstands metastase	2.16.840.1.113883.2.4.3.11.60.40.4.10.3	rpM1b(0)
rpM1b(1)	rpM1b(1)	M_Afstands metastase	2.16.840.1.113883.2.4.3.11.60.40.4.10.3	rpM1b(1)
rpM1c	rpM1c	M_Afstands metastase	2.16.840.1.113883.2.4.3.11.60.40.4.10.3	rpM1c
rpM1c(0)	rpM1c(0)	M_Afstands metastase	2.16.840.1.113883.2.4.3.11.60.40.4.10.3	rpM1c(0)
rpM1c(1)	rpM1c(1)	M_Afstands metastase	2.16.840.1.113883.2.4.3.11.60.40.4.10.3	rpM1c(1)
rpM1d	rpM1d	M_Afstands metastase	2.16.840.1.113883.2.4.3.11.60.40.4.10.3	rpM1d
rpM1d(0)	rpM1d(0)	M_Afstands metastase	2.16.840.1.113883.2.4.3.11.60.40.4.10.3	rpM1d(0)
rpM1d(1)	rpM1d(1)	M_Afstands metastase	2.16.840.1.113883.2.4.3.11.60.40.4.10.3	rpM1d(1)

Legend	
<b>Definitie</b>	
<b>Datatype</b>	
<b>Opties</b>	

## 1.8 Example Instances

TNMTumorClassificatie		
<b>datumTNMClassificatie</b>	<b>TNMVersie</b>	<b>Geïntegreerde TNMWaarde</b>
01/08/2020	AJCC 8e editie	cT3N2M1
<b>AnatomischStadium</b>	<b>PrognostischStadium</b>	<b>R_ResidueleTumor</b>
Stage IV	Stage IV	--
<b>Toelichting</b>	HER2 negatief, ER negatief, PR negatief	
<b>L_LymfatischeInvasie</b>	<b>Pn_PerineuraleInvasie</b>	<b>V_VeneuzeInvasie</b>
--	--	--
Primaire Tumor		
<b>m_PrimaireTumorAantal</b>	<b>T_tumor</b>	<b>G_DifferentiatiegraadTumor</b>
1	cT3	G2
Afwijking		
<b>AfwijkingNummer</b>	<b>Morfologie (ICD-O-3)</b>	
1	Infiltrerend ductaal carcinoom, (8500/3)	
AnatomischeLocatie		
<b>Locatie ICD-O-3</b>	<b>Locatie SNOMED CT</b>	<b>Lateraliteit</b>
(C50.5) Laterale onderkwadrant van borst	structuur van laterale onderkwadrant van mamma (33564002)	Rechts
<b>AfwijkingNummer</b>	<b>Morfologie (ICD-O-3)</b>	
2	Fibroadenoom (9010/0)	
AnatomischeLocatie		
<b>Locatie ICD-O-3</b>	<b>Locatie SNOMED CT</b>	<b>Lateraliteit</b>
(C50.5) Laterale onderkwadrant van borst	structuur van laterale onderkwadrant van mamma (33564002)	Rechts
Regionale Lymfeklieren		
<b>N_RegionaleLymfeklieren</b>	cN2	
AnatomischeLocatie		
<b>Locatie ICD-O-3</b>	<b>Locatie</b>	<b>Lateraliteit</b>
C77.3 Infraclavculaire lymfeklier	structuur van infraclavculaire lymfeklier (9659009)	Rechts
AnatomischeLocatie		
<b>Locatie ICD-O-3</b>	<b>Locatie</b>	<b>Lateraliteit</b>
C77.3 Axillaire lymfeklier	structuur van nodus lymphoideus axillaris (68171009)	Rechts
AfstandsMetastasen		
<b>M_Afstandsmetastasen</b>	cM1	
AnatomischeLocatie		
<b>Locatie (ICD-O-3)</b>	<b>Locatie</b>	<b>Lateraliteit</b>
C34.1 Bovenkwab van long	Structuur van lobus superior pulmonis (45653009)	Rechts

## 1.9 Instructions

### From a generic TNM Classification towards a disease-specific TNM Classification

Development or implementation of a tumor-specific information model of the TNM Classification standard requires insight into how values sets can be restricted, expanded, and applied.

Restriction of a value list means either leaving out items or making items more specific by choosing other terms within the official code system. The aim for the future is to have available ready-to-use value sets per type of malignancy.

#### Codes systems

This clinical model uses 2 international code systems:

- SNOMED CT (managed by SNOMED international, Dutch management by Nictiz)
- International Classification of Diseases for Oncology, version 3 (ICD-O-3), managed by the WHO.

For items where neither of these 2 code systems were considered useful or satisfactory, we chose to manage the value sets as part of the management of the HCIMs (Health and Care Information Models).

When a unique and international reference to the TNM Classification standard as codesystem and the valuesets becomes available these can be amended in a next version of the HCIM .

#### Starting points from the perspective of the TNM Classification standard

- One TNM-classification per single organ, and one classification per side for paired organs. For example: when breast cancer involves a primary tumor in both breasts, there will be two instances of the HCIM



with laterality 'left' for one breast and laterality 'right' for the other ('bilateral' is not allowed for paired organs).

- The HCIM does not only encompass the outcome of the TNM classification, but also the exact localization of the primary tumor(s), the positive lymph nodes, and metastases.
- In case of multiple primary tumors in the same organ, one should classify the tumor with the highest T-category, and mention the multiple presence or number of tumors between brackets. For example: T2 (m) or T2 (5). The lesion with the highest T-category determines the classification of the tumor. In order to distinguish between lesions and to represent each individual lesion, the HCIM has the container 'Lesion'. Each lesion has a number. The HCIM does not represent which lesion (e.g. 1, 2, or 4) has the highest T-category, since this is only clear after judgment by the health professional on the basis of morphology and/or imaging.

**Use of the UICC (<http://www.uicc.org/resources/tnm>) / AJCC**

**(<http://cancerstaging.org/references-tools/deskreferences/Pages/default.aspx>) version of the TNM**

**Classification of Malignant Tumours.**

- Although definitions and wording should not differ between the AJCC and UICC TNM classifications, some differences have regrettably crept in (for example: the definition of regional lymph nodes associated with carcinomas of the esophagus and endometrium). Therefore, the HCIM allows for choosing between the UICC or AJCC version. Criteria within the TNM-classification system have changed over the years and resulted in various editions. As a result, a specific tumor stage may have a completely different prognosis, depending on the edition used. Furthermore, it is important to consider the consequences of improved treatment over time.
- Beside staging based on the UICC or AJCC classifications there is the 'Essential TNM'. This is a simplified version of the TNM, specifically developed for the representation of the occurrence of cancer in low wage countries. These countries often lack the resources for early diagnosis, and make limited use of the TNM classification system (in these countries, cancer is generally detected in a very late stage). This special version of the TNM has not been taken into account while developing this HCIM. Furthermore, the use of the 'Essential TNM' is generally limited to acquire data for statistics related to the prevalence of certain malignancies in these countries.

**Prefix and suffix are integrated in value sets**

Although it would be possible to create separate value sets for the potential prefixes and suffixes associated with the T, N, and M items, we chose to facilitate the use of the model by integrating them in the T, N, and M value sets. This decision is based on the current insight that it prevents the creation of invalid combinations.

**Prefix**

- **c:** Clinical classification, based on data prior to treatment, such as clinical examination, imaging, endoscopy, biopsies, surgical exploration or examination under anesthesia, and other types of examination.
- **yc:** Classification performed during or following initial multimodal therapy (non-surgical).
- **p:** Post-surgical histopathological classification. This is based on data prior to treatment, supplemented with pathological examination after surgical treatment.
- **yp:** Classification performed during or after multimodal treatment (including surgical treatment).
- **rc:** Clinical classification in case of a recurrent tumor (after a disease-free interval).
- **rp:** Postoperative pathological classification in case of a recurrent tumor (after a disease-free interval).
- **a:** Classification determined during autopsy.

**Suffix**

- (mi): Cases with micrometastasis only
- (sn): Cases after sentinel lymph node assessment
- (f): Cases where FNA or a core biopsy is performed on regional lymph nodes
- (i-): negative morphological findings for isolated tumor cells (ITC)
- (i+): positive morphological findings for isolated tumor cells (ITC)
- (mol-): negative non-morphological findings for isolated tumor cells (ITC)
- (mol+): positive non-morphological findings for isolated tumor cells (ITC)
- (0): without elevated (LDH)
- (1): with elevated (LDH)

## 1.10 Interpretation

## 1.11 Care Process

## 1.12 Example of the Instrument

## 1.13 Constraints

## 1.14 Issues

Usability of this HCIM as well as disease-specific code lists are created in the first pilot(s), planned in the summer of 2020. During these projects, IKNL will provide the maintenance for these code lists. When these pilot projects are completed, the findings will be included as change requests in the regular maintenance process of the HCIM center.

## 1.15 References

1. TNM Classification of Malignant Tumours, 8th Edition - James D. Brierley (Editor), Mary K. Gospodarowicz (Editor), Christian Wittekind (Editor)- International Union Against Cancer (UICC)- ISBN: 9781119263562 (epub)
2. <https://www.uicc.org/resources/tnm> [ONLINE geraadpleegd: 04 mei 2020]
3. International Classification of diseases for oncology (ICD-O) – 3<sup>rd</sup> edition, 1<sup>st</sup> revision – April Frits, Constance Percy, Andrew Jack, Kanagaratnam Shanmugaratnam, Leslie Sobin, D Max Parkin, Sharon Whelan – World Health Organisation – WHO library cataloguing – ISBN 978 92 4 069212 1 (PDF)

## 1.16 Functional Model

## 1.17 Traceability to other Standards

## 1.18 Disclaimer

The Health and Care Information Models (a.k.a Clinical Building Block) has been made in collaboration with several different parties in healthcare. These parties asked Nictiz to manage good maintenance and development of the information models. Hereafter, these parties and Nictiz are referred to as the collaborating parties. The collaborating parties paid utmost attention to the reliability and topicality of the data in these Health and Care Information Models. Omissions and inaccuracies may however occur. The collaborating parties are not liable for any damages resulting from omissions or inaccuracies in the information provided, nor are they liable for damages resulting from problems caused by or inherent to distributing information on the internet, such as malfunctions, interruptions, errors or delays in information or services provide by the parties to you or by you to the parties via a website or via e-mail, or any other digital means. The collaborating parties will also not accept liability for any damages resulting from the use of data, advice or ideas provided by or on behalf of the parties by means of the Health and Care Information Models. The parties will not accept any liability for the content of information in this Health and Care Information Model to which or from which a hyperlink is referred. In the event of contradictions in mentioned Health and Care Information Model documents and files, the most recent and highest version of the listed order in the revisions will indicate the priority of the documents in question. If information included in the digital version of a Health and Care Information Model is also distributed in writing, the written version will be leading in case of textual differences. This will apply if both have the same version number and date. A definitive version has priority over a draft version. A revised version has priority over

previous versions.

## **1.19 Terms of Use**

The user may use the Health and Care Information Models without limitations. The copyright provisions in the paragraph concerned apply to copying, distributing and passing on the Health and Care Information Models.

## **1.20 Copyrights**

A Health and Care Information Model qualifies as a work within the meaning of Section 10 of the Copyright Act (Auteurswet). Copyrights protect the Health and Care Information Models and these rights are owned by the cooperating parties.

The user may copy, distribute and pass on the information in this Health and Care Information Model under the conditions that apply for Creative Commons license Attribution-NonCommercial-ShareAlike 3.0 Netherlands (CC BY-NC-SA-3.0).

The content is available under Creative Commons Attribution-NonCommercial-ShareAlike 3.0 (see also <http://creativecommons.org/licenses/by-nc-sa/3.0/nl/>)

This does not apply to information from third parties that sometimes is used and / or referred to in a Health and Care Information Model, for example to an international medical terminology system. Any (copyright) rights that protect this information are not owned by the cooperating parties but by those third parties.

Nictiz is the independent national competence centre for electronic exchange of health and care information. The activities of Nictiz include the targeted development and management of information standards at the request of and in partnership with the stakeholders in healthcare. Nictiz advises these parties on all aspects of information exchange and identifies (future) national and international developments.

**Nictiz**

P.O. Box 19121  
2500 CC Den Haag  
Oude Middenweg 55  
2491 AC Den Haag

070-3173450  
[info@nictiz.nl](mailto:info@nictiz.nl)  
[www.nictiz.nl](http://www.nictiz.nl)



